

**UMMC PROJECT NO. 209-587
MIND CENTER AND GERIATRIC CLINIC
UNIVERSITY OF MISSISSIPPI MEDICAL CENTER
JACKSON, MISSISSIPPI**

**From: Foil Wyatt Architects & Planners, PLLC
1510 North State Street, Suite 200
Jackson, MS 39202**

Addendum No. 2

October 28, 2025

This addendum forms a part of the contract documents and modifies the original plans and specifications dated September 17, 2025.

Previous Addenda:

Item 2.1: Addendum No. 1

Delete: Item 1.1: Elevators

Specifications:

Item 2.2: Section 012100 - Cash Allowances

Add: Paragraph 1.6, H.

To: "Allow \$475,000.00 for Elevator Modernization by TKE.

Item 2.3: Section 323100 - Fences and Gates

Delete: Paragraph 2.01, B. in its entirety.

Drawings:

Item 2.4: Sheet C-300

Clarification: Provide new concrete paving at all mechanical and electrical trenching for mechanical and electrical underground installations.

Item 2.5: Sheet A-102

Clarification: The wooden storage shelving in rooms 22, 231, 234, 236, 238, (west side) and 254 shall be painted $\frac{3}{4}$ " plywood with nosing.

Item 2.6: Sheet A-401

Clarification: The interior finish of the West Stairwell - 108, Storage - 109, and Pump Room - 110 shall be Finish #4.

Item 2.7: Sheet A-705

Add: New enclosed drawing 8/A-705.

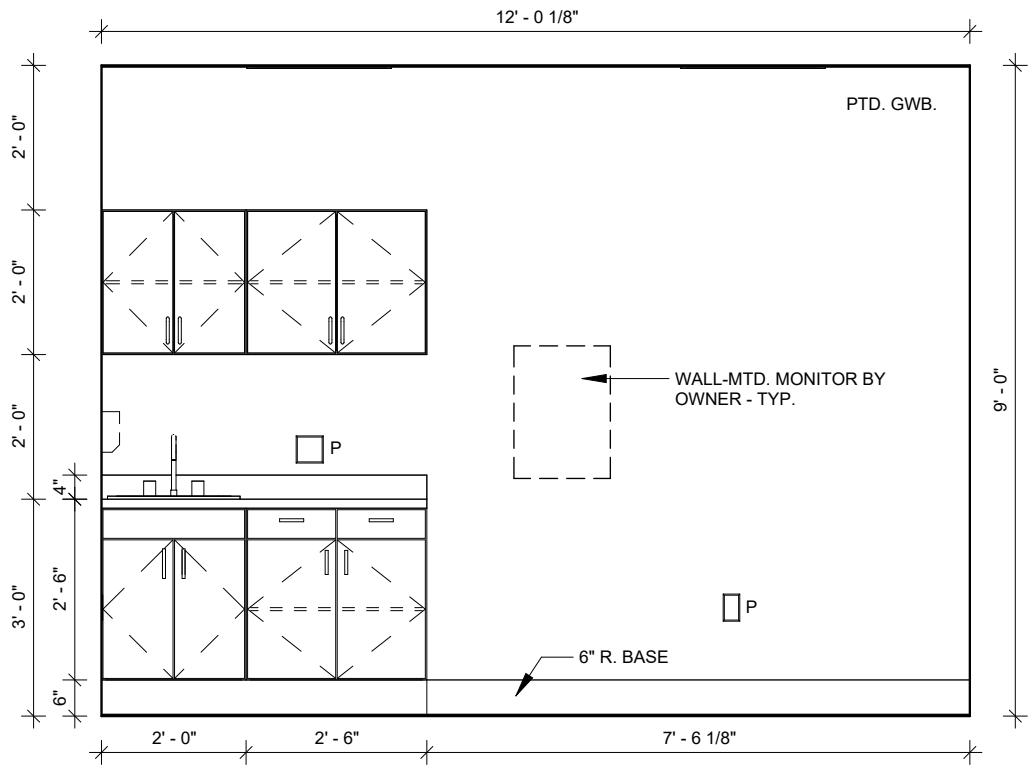
Item 2.8: Sheet COE-702

Revise: Original schedule with enclosed revised Circuit Schedule for panel ELA.

Item 2.9: Sheets ADE001, ADE701, and ADE901

Replace: Original schedule with enclosed revised sheets ADE001, ADE701, and ADE901

End of Addendum No. 2



TYP. EXAM ROOM CABINET

SCALE: 3/8" = 1'-0"

8
A-705

2

CIRCUIT SCHEDULE

PANEL	CIRCUIT	POLES	AMPS	REMARKS
ELA SPARES	1-2	1	20	VOLTAGE: 208Y/120 W/GND: 3PH. 4W. M.L.O.: 225A MOUNTING: SURFACE K.A.I.C.: 10K
	3-8	1	20	
	9-15	1	20	
	16*	3	70	
	17-22	1	20	
	23-24	1	20	
	25	2	15	
	26	3	15	
	27-36	1	20	
	37**	3	70	
SPARES	-	-	-	* - BREAKER FOR PANEL "ELC"
SPACES	-	-	-	** - BREAKER FOR PANEL "ELB"
TOTAL	37	42	-	



FoleyWatt
 ENGINEERS & ARCHITECTS, PLLC
 SUITE 300
 1005 PARKWAY WALKWAY
 JACKSON, MISSISSIPPI 39201
 TEL: 601.982.7600 FAX: 601.982.7601
 www.foleywatt.com

UMMC MIND CENTER & GERIATRIC CLINIC
 JACKSON, MISSISSIPPI
 UNIVERSITY OF MISSISSIPPI MEDICAL CENTER
 209-587

project no.
1682-24
 date
17 SEPTEMBER 2025
 revised
 2 - 28 OCTOBER 2025
 drawn by
J.C.H.

sheet no.
COE702

Schultz & Wynne
 Consulting Electrical Engineers
 4523 Office Park Drive, Jackson, MS 39206, P.O. Box 16674, Jackson, MS 39216
 TEL: 601.982.3333 FAX: 601.982.7605
 FINAL DRAWING | S/W JOB NO.: 224107

GENERAL NOTES:

- A. THE CONTRACTOR SHALL BE RESPONSIBLE FOR REMOVING ANY DRIVEWAY, PAVING, ABANDONED UTILITIES, ETC. THAT IS IN THE PATH OR AREA FOR THE NEW WORK SHOWN IN THIS PROJECT. ANY AREAS DISTURBED BY THIS WORK SHALL BE REPAIRED TO THE SATISFACTION OF THE ARCHITECT.
- B. THE ROUTING OF NEW UNDERGROUND ELECTRICAL WORK SHALL BE CLOSELY COORDINATED WITH THE ARCHITECT AND OTHER DISCIPLINES.
- C. ALL OUTDOOR/UNDERGROUND CONDUITS SHALL BE 3/4" MINIMUM UNLESS OTHERWISE NOTED.
- D. ALL OUTDOOR/UNDERGROUND CIRCUITS SHALL BE #10 AWG MINIMUM, UNLESS NOTED OTHERWISE.

- E. THE ROUTING OF UNDERGROUND DUCTS IS SHOWN FOR BIDDING PURPOSES AND THE ACTUAL ROUTING SHALL BE CLOSELY COORDINATED AND VERIFIED BY THE ARCHITECT, OWNER AND OTHER DISCIPLINES. CONTRACTOR IS RESPONSIBLE FOR LOCATING ALL UNDERGROUND UTILITIES PRIOR TO BEGINNING EXCAVATION.
- F. ANY DAMAGE TO ANY EXISTING UTILITY SHALL BE REPAIRED TO THE COMPLETE SATISFACTION OF THE ARCHITECT AND OWNER AND IN A TIMELY MANNER RESPONSIVE TO THE SEVERITY OF THE DISRUPTION.
- G. CONTRACTOR SHALL "STAKE OUT" THE OUTDOOR POLE LOCATIONS PER THE PLANS FOR OWNER/ARCHITECT APPROVAL PRIOR TO ROUGH-IN OR DRILLING POLE BASE.
- H. COORDINATE EXACT LOCATIONS OF MANHOLES AND PAD MOUNTED TRANSFORMER WITH THE ARCHITECT.

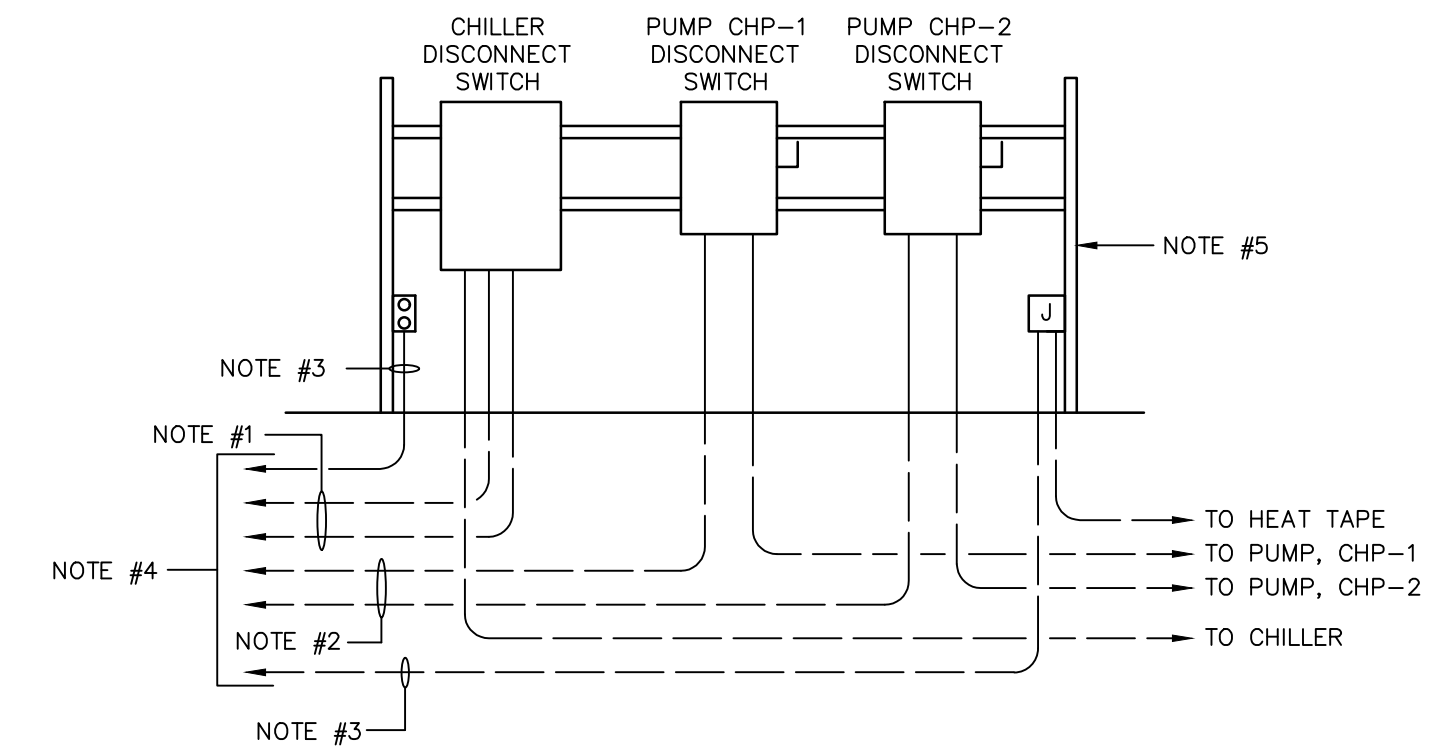
- I. CONTRACTOR SHALL COORDINATE WITH GENERAL CONTRACTOR FOR ANY PHASING REQUIREMENTS TO ROUTE AND INSTALL NEW WORK.
- J. PROVIDE A NYLON PULL ROPE IN ALL EMPTY UNDERGROUND DUCTS IN THIS PROJECT.

PANEL SCHEDULE:

"A"	=	PANEL "H1A"
"B"	=	PANEL "H2A"
"C"	=	PANEL "H3A"
"D"	=	PANEL "H4A"
"E"	=	PANEL "EHA"
"H"	=	PANEL "L1A"
"J"	=	PANEL "L2A"
"K"	=	PANEL "L3A"
"L"	=	PANEL "L4A"
"M"	=	PANEL "ELA"
"N"	=	PANEL "ELB"
"P"	=	PANEL "L2B"
"R"	=	PANEL "L3B"
"S"	=	PANEL "L4B"
"T"	=	PANEL "ELC"

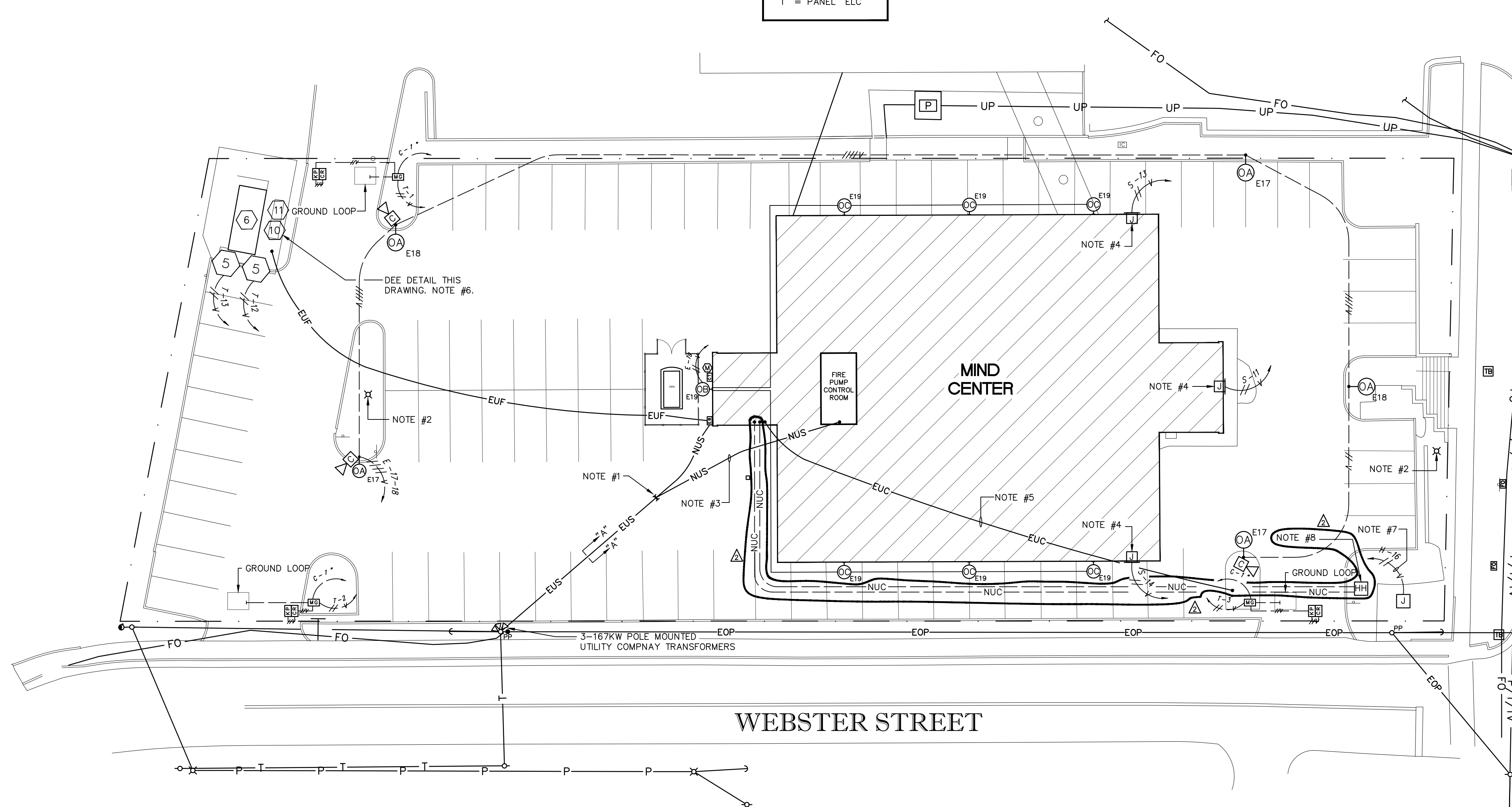
NOTES: (DETAIL - ELECTRICAL EQUIPMENT AT CHILLER)

1. EXISTING TWO (2) - 2 1/2" CONDUITS, (ONE ACTIVE, ONE SPARE), FOR EXISTING CHILLER, DISCONNECT AND REMOVE CABLING AND DISCONNECT SWITCH. INSTALL NEW CABLING AND NEW DISCONNECT CONDUIT IN EXISTING CONDUIT PER THE PLANS. CAP AND SEAL SPARE CONDUIT.
2. EXISTING 3/4" CONDUIT FOR PUMPS, DISCONNECT AND REMOVE CABLING AND EXISTING EQUIPMENT. INSTALL NEW DISCONNECT SWITCH AND CABLING IN EXISTING CONDUIT PER THE PLANS.
3. INSTALL NEW CABLING IN EXISTING 3/4" CONDUIT PER THE PLANS. CAP AND SEAL ALL SPARE CONDUITS.
4. RE-WORK EXISTING CONDUITS AT BUILDING TO NEW PANEL PER THE PLANS. REMOVE EXISTING EQUIPMENT STRUCTURE.
5. PROVIDE NEW TUBULAR, INDEPENDENT, PAINTED STRUCTURE TO INSTALL NEW ELECTRICAL EQUIPMENT. COORDINATE SIZE AND LOCATION WITH ARCHITECT.



DETAIL - ELECTRICAL EQUIPMENT AT CHILLER

NO SCALE

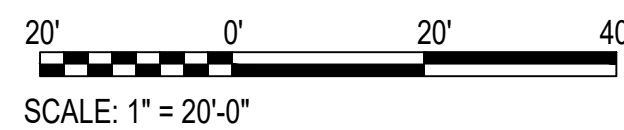


NOTES: (SITE PLAN)

1. CONTRACTOR SHALL INTERCEPT CONCRETE, DUCT BANK EXISTING SECONDARY SERVICE CONDUITS AND RE-ROUTE THRU CT CAN AND SERVICE DISCONNECT ON OUTSIDE OF BUILDING. IT SHALL BE ACCEPTABLE TO RE-USE EXISTING CONDUCTORS FROM THE TRANSFORMER TO THE NEW DISCONNECT.
2. EXISTING LIGHT POLE TO BE REMOVED.
3. PROVIDE NEW 480 VOLT, 3 PHASE, SECONDARY SERVICE CONNECTION AND UNDERGROUND SECONDARY SERVICE CONDUIT PER THE POWER RISER DIAGRAM FOR THE FIRE PUMP.
4. CONNECTION TO BUILDING SIGN. VERIFY EXACT LOCATION PRIOR TO ROUGH-IN.
5. UNDERGROUND FIBER OPTIC SERVICE CONDUIT AND CABLE TO REMAIN. PROTECT THROUGHOUT CONSTRUCTION.
6. EXISTING STRUCTURE, DISCONNECTS, CONTACTORS, CONDUITS, ETC., TO BE DISCONNECTED, REMOVED, AND REPLACE PER THE NEW WORK.
7. LOCATION OF UNDERGROUND POWER CONNECTION TO UMMC LIGHTED MONUMENT SIGN.
8. NEW IN-GROUND POLYMER CONCRETE PULLBOX, 36"x30"x24". VERIFY LOCATION PRIOR TO ROUGH-IN.

SITE PLAN

SCALE: 1" = 20'-0"



FoW Wyatt
Architects & Planners, PLLC
1500 NORTH STATE STREET
SUITE 200
JACKSON, MISSISSIPPI 39201
PHONE: 601.532.3071
FAX: 601.532.3071
EMAIL: info@fowwyatt.com
WWW: www.fowwyatt.com

UMMC MIND CENTER & GERIATRIC CLINIC
209-587
UNIVERSITY OF MISSISSIPPI MEDICAL CENTER
MISSISSIPPI
JACKSON

project no. 1682-24
date 17 SEPTEMBER 2025
revised
Δ - 28 OCTOBER 2025

drawn by: J.G.H.

Schultz & Wynne
A PROFESSIONAL ASSOCIATION
Consulting Electrical Engineers
4525 Office Park Drive, Jackson, MS 39216 Post
Office Box 16074, Jackson, MS 39216
TEL: 601-982-5313 FAX: 601-982-7665

sheet no. **ADE001**
of

FINAL DRAWING S/W JOB NO: 224107



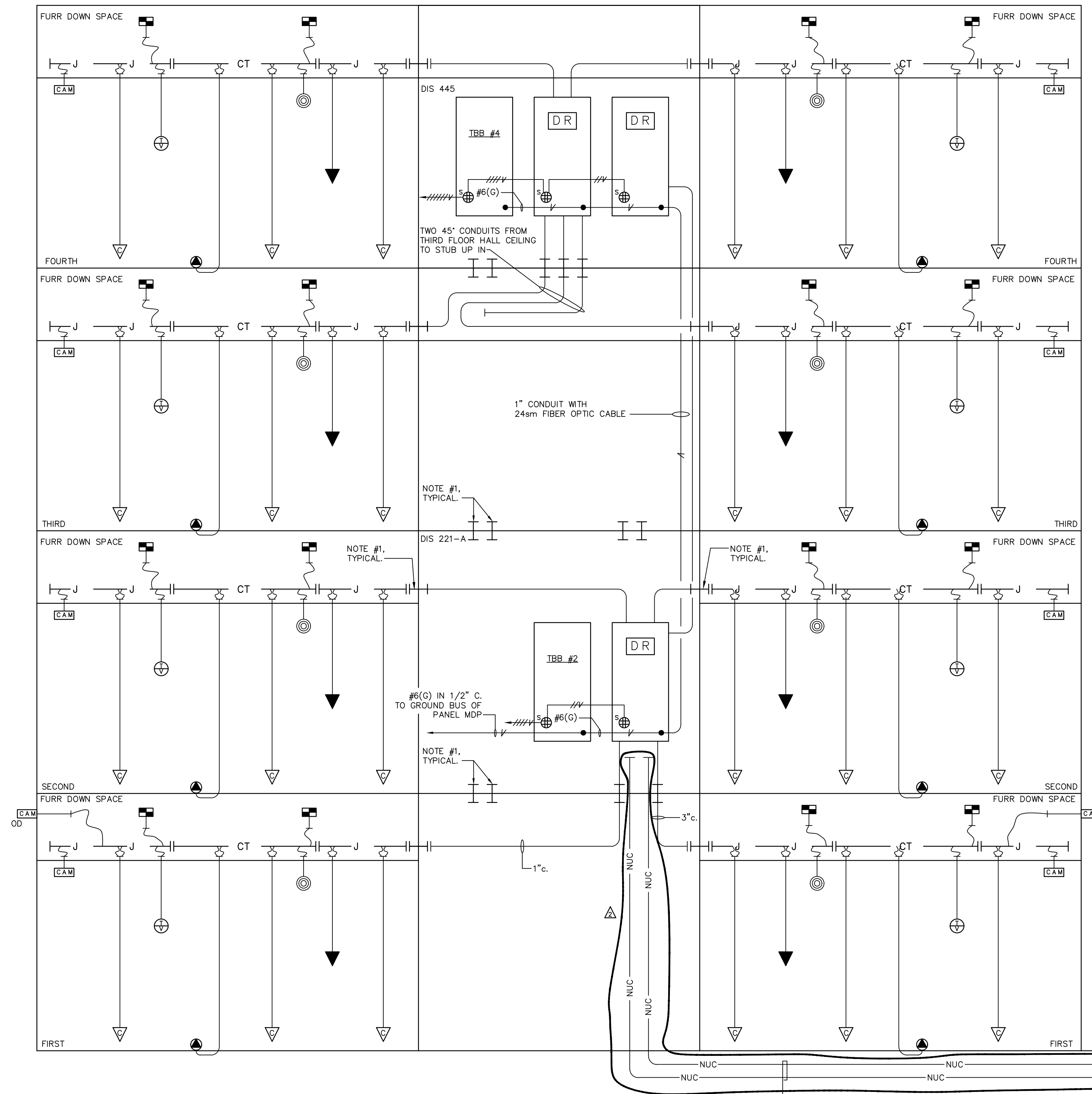
FoUWYATT
Architects & Planners, PLLC
SUITE 200
1515 NORTH STATE STREET
JACKSON, MISSISSIPPI 39201
PHONE: 601.532.3071
FAX: 601.532.3071
EMAIL: info@foUWYATT.com
WWW.FOUWYATT.COM

UMMC MIND CENTER & GERIATRIC CLINIC
209-587
UNIVERSITY OF MISSISSIPPI MEDICAL CENTER
MISSISSIPPI
JACKSON

project no.
1682-24
date
17 SEPTEMBER 2025
revised
Δ - 28 OCTOBER 2025

drawn by
J.G.H.

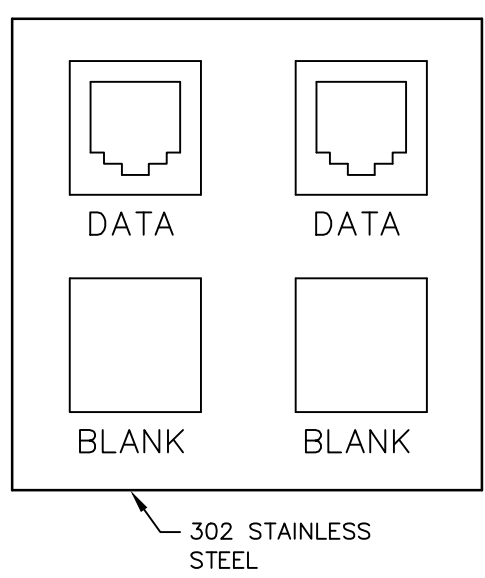
sheet no.
ADE701
of



COMMUNICATIONS RISER DIAGRAM
NO SCALE

- GENERAL NOTES:**
1. CONDUITS SHALL HAVE LONG RADIUS BENDS.
 2. CONDUITS SHALL 1" MINIMUM UNLESS NOTED OTHERWISE.
 3. CONTRACTOR TO PROVIDE CONDUIT, BOXES, PATHWAYS, BACKBOARDS, POWER, CABLE OUTLETS, TERMINATION, CABLING, AND GROUNDING.

- ▽ — 2 CAT. 6 DATA CABLES IN 1" c.
- ▼ — 2 CAT. 6 DATA CABLES IN 1" c.
- ◎ — 1 CAT. 6 DATA CABLE IN 3/4" c.
- ◻ (CAM) — 1 CAT. 6 DATA CABLE IN 3/4" c.
- ◻ (CAM) — 1 CAT. 6 DATA CABLE IN 3/4" c.
- ◻ (CAM) — 1 CAT. 6 DATA CABLE IN 3/4" c.
- ⊕ — 1 CAT. 6 DATA CABLE IN 3/4" c.



COMMUNICATIONS OUTLET DETAIL
SYMBOLS '▽', '▼', '◎', '◻ (CAM)', '◻ (CAM)', '⊕' AND '◻ (CAM)'
NO SCALE

- NOTES: (COMMUNICATIONS RISER DIAGRAM)**
1. 3" CONDUIT SLEEVE. FIRE SEAL AS REQUIRED BY ARCHITECT.
 2. NEW IN-GROUND POLYMER CONCRETE PULLBOX, 36"x30"x24". VERIFY LOCATION PRIOR TO ROUGH-IN. REFER TO SITE PLAN ON SHEET ADE001.

2 - 4" UNDERGROUND COMMUNICATIONS CONDUITS, WITH PULL STRING, TO NEW COMMUNICATIONS HANDHOLE. REFER TO SITE PLAN ON SHEET ADE001

Schultz & Wynne
Consulting Electrical Engineers
A PROFESSIONAL ASSOCIATION
4525 Office Park Drive, Jackson, MS 39216 Post
Office Box 16074, Jackson, MS 39216
TEL: 601-982-5313 FAX: 601-982-7685
FINAL DRAWING S/W IOR NO: 224107

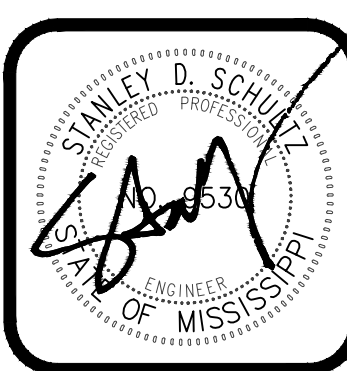
LEGEND

	FIRE ALARM SYSTEM AUDIBLE AND VISUAL ALARM DEVICE, MOUNT CENTER LINE UP 80" ABOVE FINISHED FLOOR OR 6" BELOW CEILING WHICHEVER IS LOWER.
	FIRE ALARM SYSTEM ALARM LIGHT, MOUNT CENTER LINE UP 80" ABOVE FINISHED FLOOR OR 6" BELOW CEILING, WHICHEVER IS LOWER.
	FIRE ALARM SYSTEM SMOKE DETECTOR, PHOTO ELECTRIC TYPE, MOUNT ON CEILING.
	FIRE ALARM SYSTEM SMOKE DETECTOR WITH SENSOR AND AUDIBLE ALARM BASE, PHOTO ELECTRIC TYPE, SURFACE MOUNT ON CEILING. PROVIDE CARBON MONOXIDE DETECTOR IN BASE OF DETECTOR.
	CONNECTION TO SECURITY DOOR. SEE DETAIL ON SHEET E600.
	WIRELESS ACCESS POINT OUTLET. DEVICE AND CABLING BY OTHERS.
	OCCUPANCY SENSOR, CEILING MOUNTED.
	DUPLEX GROUNDABLE RECEPTACLE FOR REFRIGERATOR, 120 VOLTS, NEMA 5-20R, SEE SPECS. FOR NUMBER OF CAPS (NEMA 5-15P) TO BE FURNISHED, CIRCUIT NUMBER. VERIFY MOUNTING HEIGHT PRIOR TO ROUGH-IN.
	DUPLEX GROUNDABLE RECEPTACLE WITH USB CHARGING, 120 VOLTS, NEMA 5-20R, CIRCUIT NUMBER. SEE SPECIFICATIONS.
	DUPLEX GROUNDABLE RECEPTACLE, 120 VOLTS, NEMA 5-20R, SEE SPECS. FOR NUMBER OF CAPS (NEMA 5-15P) TO BE FURNISHED, CIRCUIT NUMBER. MOUNT CENTER LINE UP 7"-6".
	COMPUTER OUTLET AND PLATE, 3/4"C OR SIZE AS NOTED CONDUIT STUBBED UP ABOVE ACCESSIBLE CEILING. MOUNT CENTER LINE UP 7"-6".
	COMPUTER OUTLET AND PLATE, 3/4"C OR SIZE AS NOTED CONDUIT STUBBED UP ABOVE ACCESSIBLE CEILING. MOUNT CENTER LINE UP 4" ABOVE COUNTER/BACKSPASH.
	INDOOR SECURITY SYSTEM CAMERA OUTLET.
	OUTDOOR SECURITY SYSTEM CAMERA OUTLET.
	SURGE PROTECTION DEVICE. SEE SPECIFICATIONS.
	TELEVISION SYSTEM OUTLET, 3/4"C. STUBBED UP ABOVE ACCESSIBLE CEILING. MOUNT 7"-6" A.F.F. CABLING BY OTHERS.
	EMERGENCY CALL BOX. VERIFY LOCATION AND MOUNTING HEIGHT PRIOR TO ROUGH-IN.
	EMERGENCY CALL BOX CONTROL PANEL.
	CONNECTION TO AUTOMATIC POWER DOOR.
	DOOR OPERATED PUSH BUTTON. VERIFY LOCATION WITH ARCHITECT PRIOR TO ROUGH-IN.
	CONNECTION TO FIRE/SMOKE DAMPER.
	EXISTING UNDERGROUND FIBER OPTIC CABLE.
	EXISTING OVERHEAD ELECTRICAL SERVICE.
	EXISTING UNDERGROUND ELECTRICAL SERVICE.
	EXISTING UNDERGROUND BRANCH FEEDER.
	CONNECTION VAV BOX.
	SPEAKER OUTLET LOCATION, MOUNTED ON CEILING. SPEAKER AND CABLING BY OTHERS.
	MANUAL TRANSFER SWITCH
	CONNECTION TO MOTORIZED GATE.
	CONNECTION TO SECURITY DOOR. SEE DETAIL ON SHEET E-11.
	CONNECTION TO CARD READER.
	CONNECTION TO EMERGENCY GENERATOR REMOTE ANNUNCIATOR.
	CABLE TRAY SHALL BE INSTALLED AND ROUTED PER PLANS, PLAN DETAIL, AND SPECIFICATIONS. COORDINATE CABLE TRAY LOCATIONS WITH OTHER TRADES TO BE ACCESSIBLE AT COMPLETION OF PROJECT.
	J HOOKS SHALL BE INSTALLED AND ROUTED PER PLANS AND SPECIFICATIONS. COORDINATE J HOOK LOCATIONS WITH OTHER TRADES TO BE ACCESSIBLE AT COMPLETION OF PROJECT.
	POKE-THRU FLOOR BOX, FOR POWER AND COMMUNICATIONS. FLUSH TYPE, 6" DIAMETER WITH PLUG-INS BELOW FLOOR LEVEL AND SOLID HINGED DOOR.
	SPEAKER OUTLET WITH 8" SPEAKER, MOUNT FLUSH IN CEILING.
	CONNECTION TO ELECTRIC HAND DRYER. VERIFY LOCATION AND CONNECTION METHOD PRIOR TO ROUGH-IN.
	NEW UNDERGROUND COMMUNICATIONS CONDUIT.

LEGEND

	BRANCH CIRCUIT (CONDUIT AND WIRING) CONCEALED ABOVE CEILING OR IN WALL, NUMBER OF CONDUCTORS. (---) INDICATES GREEN GROUNDING CONDUCTOR SIZED PER BRANCH CIRCUIT UNLESS OTHERWISE NOTED.
	BRANCH CIRCUIT (CONDUIT AND WIRING) CONCEALED IN OR UNDER FLOOR SLAB AS DIRECTED, NUMBER OF CONDUCTORS.
	BRANCH CIRCUIT (CONDUIT AND WIRING) EXPOSED ON CEILING ONLY, NUMBER OF CONDUCTORS.
	BRANCH CIRCUIT (CONDUIT AND WIRING) EXPOSED IN FLEXIBLE CONDUIT, NUMBER CONDUCTORS.
	BRANCH CIRCUIT (CONDUIT AND WIRING) EXPOSED IN LIQUIDTIGHT FLEXIBLE CONDUIT, NUMBER OF CONDUCTORS. HOME RUN, PANEL AND CIRCUIT DESIGNATION, NUMBER OF CONDUCTORS.
	TELEPHONE SYSTEM CONDUIT CONCEALED OR EXPOSED PER BRANCH CIRCUIT SYMBOL, SIZE.
	TELEPHONE SYSTEM HOME RUN, SIZE.
	TELEVISION SYSTEM CONDUIT, CONCEALED OR EXPOSED PER BRANCH CIRCUIT SYMBOLS, 3/4" OR AS NOTED.
	FIRE ALARM SYSTEM CONDUIT CONCEALED OR EXPOSED PER BRANCH CIRCUIT SYMBOLS, SIZE.
	COMPUTER SYSTEM CONDUIT CONCEALED OR EXPOSED PER BRANCH CIRCUIT SYMBOL, SIZE.
	COMPUTER SYSTEM HOME RUN, SIZE.
	FIBER OPTICS SYSTEM CONDUIT CONCEALED OR EXPOSED PER BRANCH CIRCUIT SYMBOL, SIZE.
	CEILING OUTLET WITH FIXTURE SYMBOL AND CIRCUIT NUMBER.
	WALL BRACKET OUTLET WITH FIXTURE SYMBOL AND CIRCUIT NUMBER.
	FLUORESCENT FIXTURE WITH FIXTURE SYMBOL AND CIRCUIT NUMBER.
	RECESSED FLUORESCENT FIXTURE WITH FIXTURE SYMBOL AND CIRCUIT NUMBER.
	THROUGH ANY SYMBOL INDICATES BLANK UP, REMOVE OR ABANDON AS REQUIRED; THROUGH ANY CONDUIT INDICATES REMOVE IF ACCESSIBLE, PULL OUT CONDUCTORS IF INACCESSIBLE.
	HATCH LINES DENOTES LIGHTING ON EMERGENCY POWER CIRCUIT.
	LIGHTING STANDARD, AREA AND/OR STREET LIGHTING SYSTEM, FIXTURE SYMBOL AND CIRCUIT NUMBER.
	LIGHTING STANDARD, DOUBLE HEAD, AREA AND/OR STREET LIGHTING SYSTEM, FIXTURE SYMBOL AND CIRCUIT NUMBER.
	TELEPHONE BACKBOARD, SIZE AS NOTED, 3/4" PLYWOOD, LONG DIMENSION VERTICAL. TERMINATE ALL TELEPHONE HOMERUNS AT THIS POINT AND BUSH.
	COMPUTER OUTLET AND PLATE, 3/4"C OR SIZE AS NOTED CONDUIT STUBBED UP ABOVE ACCESSIBLE CEILING.
	SURFACE JUNCTION BOX, SIZE AND MOUNTING HEIGHT AS NOTED.
	FLUSH JUNCTION BOX, SIZE AND MOUNTING HEIGHT AS NOTED.
	JUNCTION BOX ABOVE ACCESSIBLE CEILING FOR 120 VOLT CIRCUITRY.
	JUNCTION BOX ABOVE ACCESSIBLE CEILING FOR 277 VOLT CIRCUITRY.
	JUNCTION BOX ABOVE ACCESSIBLE CEILING FOR 120 VOLT EMERGENCY CIRCUITRY.
	JUNCTION BOX ABOVE ACCESSIBLE CEILING FOR 277 VOLT EMERGENCY CIRCUITRY.
	SWITCH, SINGLE POLE FLUSH TUMBLER. MOUNT CENTER LINE UP 48", UNLESS NOTED OTHERWISE ON THE PLANS OR IN THE SPECIFICATIONS.
	SWITCH, THREE-WAY FLUSH TUMBLER. MOUNT CENTER LINE UP 48", UNLESS NOTED OTHERWISE ON THE PLANS OR IN THE SPECIFICATIONS.
	SWITCH, FOUR-WAY FLUSH TUMBLER. MOUNT CENTER LINE UP 48", UNLESS NOTED OTHERWISE ON THE PLANS OR IN THE SPECIFICATIONS.
	MANUAL MOTOR SWITCH, SINGLE POLE, FLUSH MOUNTING. MOUNT CENTER LINE UP 48", UNLESS OTHERWISE NOTED ON PLANS OR IN SPECIFICATIONS.
	TIME SWITCH, MOUNTED 4'6" ABOVE FLOOR.
	MAGNETIC CONTACTOR, NUMBER OF POLES, AMPS.
	PHOTO-ELECTRIC CONTROL SENSING CELL, AIM TO NORTH.
	PHOTO-ELECTRIC CELL CONTROL RELAY.
	DUPLEX GROUNDABLE RECEPTACLE, 120 VOLTS, NEMA 5-20R, SEE SPECS. FOR NUMBER OF CAPS (NEMA 5-15P) TO BE FURNISHED, CIRCUIT NUMBER.
	DUPLEX GROUNDABLE WEATHERPROOF CONVENIENCE OUTLET, 120 VOLTS, NEMA 5-20R, MOUNT IN TYPE FD BOX, GROUND FAULT INTERRUPTER TYPE.
	TELEVISION SYSTEM OUTLET, 3/4"C. STUBBED UP ABOVE ACCESSIBLE CEILING.
	DUPLEX GROUNDABLE RECEPTACLE, 120 VOLTS NEMA 5-20R, SEE SPECS. FOR NUMBER OF CAPS (NEMA 5-15P) TO BE FURNISHED, CIRCUIT NUMBER. GROUND FAULT INTERRUPTER TYPE.
	DUPLEX GROUNDABLE RECEPTACLE, 120 VOLTS NEMA 5-20R, SEE SPECS. FOR NUMBER OF CAPS (NEMA 5-15P) TO BE FURNISHED, CIRCUIT NUMBER. GROUND FAULT INTERRUPTER TYPE.
	DUPLEX GROUNDABLE RECEPTACLE, 120 VOLTS, NEMA 5-20R, CIRCUIT NUMBER, MOUNT CENTER LINE UP 4" ABOVE COUNTER/BACKSPASH.
	DOUBLE DUPLEX GROUNDABLE RECEPTACLE, 120 VOLTS, NEMA 5-20R, SEE SPECS. FOR NUMBER OF CAPS (NEMA 5-15P) TO BE FURNISHED, CIRCUIT NUMBER.
	30 AMP, 120/208 VOLT RECEPTACLE FOR DRYER
	50 AMP, 120/208 VOLT RECEPTACLE FOR OVEN.
	POWER CONNECTION SCHEDULE MARK. SEE POWER CONNECTION SCHEDULE.
	TRANSFORMER, DRY TYPE, KVA.
	CONNECTION TO VAV BOX, VAV BOX PROVIDED UNDER MECHANICAL SECTION. PROVIDE SINGLE POLE SWITCH (\$) IN NEMA 1 ENCLOSURE ADJACENT TO VAV FOR DISCONNECT SWITCH.
	LIGHTING AND SMALL POWER PANEL, SURFACE MOUNTING, 250 VOLT SYSTEM.
	LIGHTING AND SMALL POWER PANEL, SURFACE MOUNTING, 480 VOLT SYSTEM.
	POWER PANEL, SURFACE MOUNTING.
	DISTRIBUTION PANEL, SURFACE MOUNTING.
	AUTOMATIC TRANSFER SWITCH.
	EMERGENCY ENGINE GENERATOR.
	FIRE ALARM SYSTEM CONTROL CABINET, MOUNT CENTER LINE 4'6", ROUTE ALL FIRE ALARM HOME RUNS TO THIS POINT, NUMBER OF ZONES.
	FIRE ALARM SYSTEM 80 CHARACTER LCD REMOTE ANNUNCIATOR WITH ALPHA-NUMERIC DEVICE AND ZONE INDICATION. FLUSH MOUNT WITH CENTER LINE UP 4'6" ABOVE FLOOR.
	FIRE ALARM SYSTEM THERMAL DETECTOR UNIT, MOUNT ON CEILING, 135" RATING UNLESS OTHERWISE NOTED (200').
	FIRE ALARM SYSTEM MANUAL STATION, MOUNT CENTER LINE UP 48".
	FIRE ALARM SYSTEM CONNECTION TO SPRINKLER SYSTEM PIV VALVE SUPERVISORY UNIT.
	FIRE ALARM SYSTEM CONNECTION TO SPRINKLER SYSTEM OSY VALVE SUPERVISORY UNIT.
	FIRE ALARM SYSTEM CONNECTION TO SPRINKLER SYSTEM FLOW ALARM.
	FIRE ALARM SYSTEM CONNECTION TO SPRINKLER SYSTEM TAMPER SWITCH.
	TWO (2) FIRE ALARM SYSTEM PHOTO ELECTRIC SMOKE DETECTORS, PLENUM TYPE WITH SAMPLING TUBES AND REMOTE ALARM INDICATOR LIGHTS. MOUNT ONE (1) DETECTOR IN SUPPLY PLENUM AND MOUNT ONE (1) DETECTOR IN RETURN PLENUM, WHERE DIRECTED BY ARCHITECT.

Schultz & Wynne
 Consulting Electrical Engineers
 A PROFESSIONAL ASSOCIATION
 4525 Office Park Drive, Jackson, MS 39216 Post
 Office Box 16074, Jackson, MS 39216
 TEL: 601-982-3313 FAX: 601-982-7685
 FINAL DRAWING S/W JOB NO: 224107



FoillWYATT
 Architects & Planners, PLLC
 SUITE 200
 1515 NORTH STATE STREET
 JACKSON, MISSISSIPPI 39201
 TEL: 601-532-3071
 FAX: 601-532-3071
 EMAIL: foillw@foillw.com
 WWW: www.foillw.com

UMMC MIND CENTER & GERIATRIC CLINIC
 209-587
 UNIVERSITY OF MISSISSIPPI MEDICAL CENTER
 JACKSON, MISSISSIPPI

project no.
1682-24
 date
17 SEPTEMBER 2025
 revised
Δ - 28 OCTOBER 2025

drawn by:
 J.G.H.

sheet no.
ADE901
 of