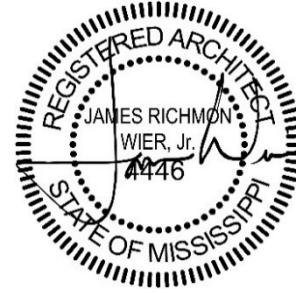




7 April 2020

Madison Central High School | Football Field Turf & Track Replacement
WBA Project No. 0120



ADDENDUM NO. 01

NOTICE TO ALL DOCUMENT HOLDERS:

The following additions, deletions, changes and clarifications to the drawings and specifications are to be included as part of the Contract Documents.

GENERAL

ITEM NO. 1

ELECTRONIC BIDDING

In response to ongoing efforts to control and limit the spread of Coronavirus and COVID-19, the Madison County School District **strongly encourages** all bidders to submit their bids for the Football Field Turf & Track Replacement project via www.centralbidding.com.

While the Owner cannot require bidders to submit online bids, they encourage bidders to choose to place their bids responsibly and in a manner that promotes the health and safety of our community.

It is recommended that bidders submit their bids as early as possible. Should any bidder encounter problems during the electronic submission process, they can contact Central Bidding direct at 225-810-4818.

In lieu of holding an in person public bid opening, bids will be opened and read aloud via teleconference. Interested parties may use the following information to join the teleconference:
Phone: (646) 749-3122 | Access Code: 294-618-301

ITEM NO. 2

SECTION 00.2113, INSTRUCTIONS TO BIDDERS

Paragraph 7.6

REPLACE the paragraph and associated sub paragraphs in their entirety with the following:
"Additional information is required with the bids as outlined in Sections 32.1815, 1.4, A & 32.1816, 1.5, A. Bidders are encouraged to keep this information brief as possible. The physical samples required in the referenced sections are to be submitted only by the lowest bidder within a week of the bid opening."

ITEM NO. 3

SECTION 01.2000, PRICE AND PAYMENT PROCEDURES

Part 1, Paragraph 1.7

REMOVE the paragraph and associated sub paragraphs in their entirety.

- ITEM NO. 4** **SECTION 32.1815, OUTDOOR SYNTHETIC PLAYING FIELD SURFACING**
Part 1, Paragraph 1.7, A, 8
REVISE the annual aggregate amount to “no less than \$15 million”.
- ITEM NO. 5** **SECTION 32.1815, OUTDOOR SYNTHETIC PLAYING FIELD SURFACING**
Part 2, Paragraph 2.2, C, 2, c, 1
REVISE the paragraph as follows:
“Finished Pile Height per ASTM D 5823 – minimum of 1.75 inches”
- ITEM NO. 6** **SECTION 32.1815, OUTDOOR SYNTHETIC PLAYING FIELD SURFACING**
Part 2, Paragraph 2.2, C, 3, b, 1
REVISE the paragraph as follows:
“BrockFill and silica sand shall be used. 3 lbs. of sand and 1 lbs. of BrockFill. Fill height, weight and density to comply with the performance and warranty requirements specified herein.
- ITEM NO. 7** **SECTION 32.1815, OUTDOOR SYNTHETIC PLAYING FIELD SURFACING**
Part 2, Paragraph 2.4
CLARIFICATION: the field/groomer/sweeper can be a single piece of equipment capable of performing all grooming and sweeping functions required for the manufacturer’s maintenance recommendations.
- ITEM NO. 8** **DRAWING A102, Detail 2**
CLARIFICATION: The contractors will need to allow for grading of the existing subgrade in order to achieve necessary drainage as required. The drain shown in the detail, is not a continuous trench drain, but instead a series of drains tied together. The tops of these drains are to be adjusted and lowered (up to 2 inches) in order have them flush out with the surface of the concrete.

See the attached Drawing provided for clarification on the as-built condition of the drainage installation.

NO OTHER ITEMS

Encl: none

cc: All Document Holders
File 0120.C2



These metal bleachers have concrete slab under them

line and inlets are a little closer to track edge than we planned

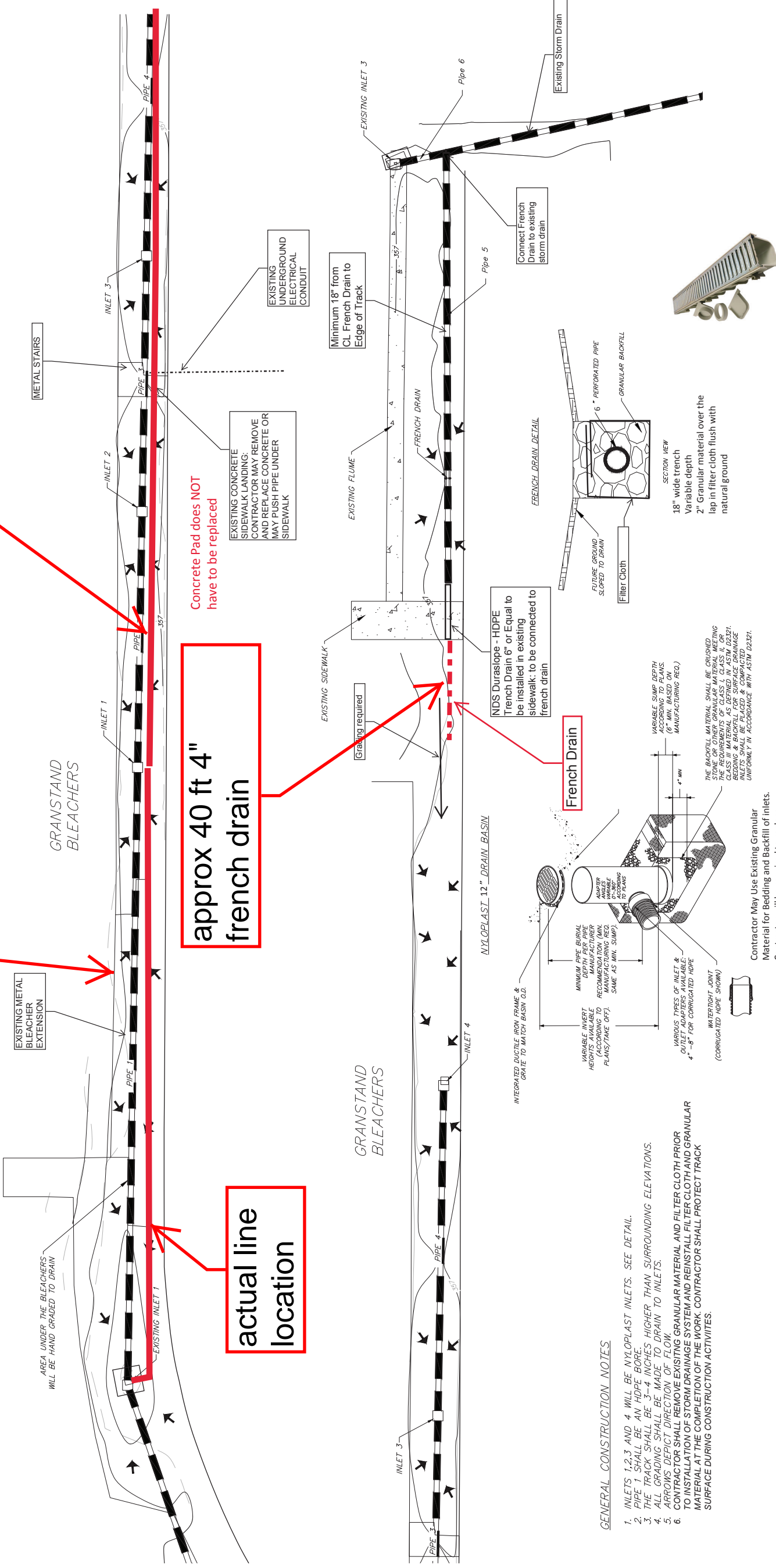
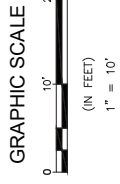
actual line location

approx 40 ft 4" french drain

Concrete Pad does NOT have to be replaced

EXISTING CONCRETE SIDEWALK LANDING CONTRACTOR MAY REMOVE AND REPLACE CONCRETE OR MAY PUSH PIPE UNDER SIDEWALK

EXISTING UNDERGROUND ELECTRICAL CONDUIT



GENERAL CONSTRUCTION NOTES

1. INLETS 1,2,3 AND 4 WILL BE NYLOPLAST INLETS. SEE DETAIL.
2. PIPE SHALL BE AN HDPE BORE.
3. THE TRACK SHALL BE 3-4 INCHES HIGHER THAN SURROUNDING ELEVATIONS.
4. ALL GRADING SHALL BE MADE TO DRAIN TO INLETS.
5. ARROWS DEPICT DIRECTION OF FLOW.
6. CONTRACTOR SHALL REMOVE EXISTING GRANULAR MATERIAL AND FILTER CLOTH PRIOR TO INSTALLATION OF STORM DRAINAGE SYSTEM AND REINSTALL FILTER CLOTH AND GRANULAR MATERIAL AT THE COMPLETION OF THE WORK. CONTRACTOR SHALL PROTECT TRACK SURFACE DURING CONSTRUCTION ACTIVITIES.

Contractor May Use Existing Granular Material for Bedding and Backfill of inlets. Contractor will be required to replace granular material as needed to maintain 2 inch thickness over finished surface

THE BACKFILL MATERIAL SHALL BE CRUSHED GRANULAR MATERIAL MEETING THE REQUIREMENTS OF CLASS I, CLASS II, OR CLASS III MATERIAL AS DEFINED IN ASTM D2221. ALL MATERIALS SHALL BE PLACED & COMPACTED UNIFORMLY IN ACCORDANCE WITH ASTM D2321.

VARIABLE SUMP DEPTH ACCORDING TO PLANS. (6" MIN. BASED ON MANUFACTURING REQ.)

MINIMUM PIPE BURIAL DEPTH PER PIPE MANUFACTURER RECOMMENDATIONS (PLANS/TAKE OFF). SAME AS MIN. SUMP).

INTEGRATED DUCTILE IRON FRAME & GRATE TO MATCH BASIN O.D.

VARIABLE TYPES OF INLET & OUTLET ADAPTERS AVAILABLE: 4" - 8" FOR CORRUGATED HDPE (CORRUGATED HDPE SHOWN)

WATERTIGHT JOINT (CORRUGATED HDPE SHOWN)

VARIOUS TYPES OF INLET & OUTLET ADAPTERS AVAILABLE: 4" - 8" FOR CORRUGATED HDPE (CORRUGATED HDPE SHOWN)

MINIMUM PIPE BURIAL DEPTH PER PIPE MANUFACTURER RECOMMENDATIONS (PLANS/TAKE OFF). SAME AS MIN. SUMP).

VARIABLE SUMP DEPTH ACCORDING TO PLANS. (6" MIN. BASED ON MANUFACTURING REQ.)

THE BACKFILL MATERIAL SHALL BE CRUSHED GRANULAR MATERIAL MEETING THE REQUIREMENTS OF CLASS I, CLASS II, OR CLASS III MATERIAL AS DEFINED IN ASTM D2221. ALL MATERIALS SHALL BE PLACED & COMPACTED UNIFORMLY IN ACCORDANCE WITH ASTM D2321.

Typical Trench Drain Detail

NOTICE TO DRAWING HOLDER
CIVIL LINK, LLC, HEREAFTER REFERRED TO AS ENGINEER, HAS PREPARED & FURNISHED THIS DRAWING TO THE OWNER FOR USE ON THIS PROJECT ONLY. THIS DRAWING SHOULD NOT BE USED ON EXTENSIONS OF THIS PROJECT OR FOR ANY OTHER PROJECT WITHOUT THE WRITTEN CONSENT OF THE ENGINEER. THE ENGINEER SHALL NOT BE RESPONSIBLE FOR THE REUSER'S SOLE RISK AND THE REUSER SHALL INDEMNIFY & HOLD HARMLESS THE ENGINEER FROM ALL CLAIMS, DAMAGES, LOSSES & EXPENSES INCLUDING ATTORNEY'S FEES ARISING OUT OF OR RESULTING THEREFROM.

REVISIONS		DRAWING INFORMATION	
NO.	DATE	BY	DESCRIPTION

C-1 PROJECT NO.:	###
SCALE:	1" = 10'
SURVEYED BY:	CIVIL-LINK, LLC
DSGN:	CW
DATE:	01/2020
DRWN:	CD
DATE:	01/2020
CHKD:	CW
DATE:	01/2020

MADISON CO. SCHOOLS DRAINAGE IMPROVEMENTS
MADISON, MISSISSIPPI



GRD & DRN

WORKING NUMBER: —
DRAWING NUMBER: C-1