

# BURRIS/WAGNON ARCHITECTS, P.A.

500L EAST WOODROW WILSON AVENUE JACKSON MS 39216 PH 6019697543 FAX 6019699374

23 March 2020

## ADDENDUM NO. 3

Re: **GS# 102-267**  
**Campus Roofing (Package B)**  
**Delta State University**  
**Cleveland, Mississippi**

**Bid Date: Thursday, March 26, 2020 (2:00 P.M.)**



### NOTICE TO ALL DOCUMENT HOLDERS:

The following additions, changes, and clarifications to the Specifications for the subject project are to be included as part of the Contract Documents, and thus amend the Scope of Work:

### DRAWINGS

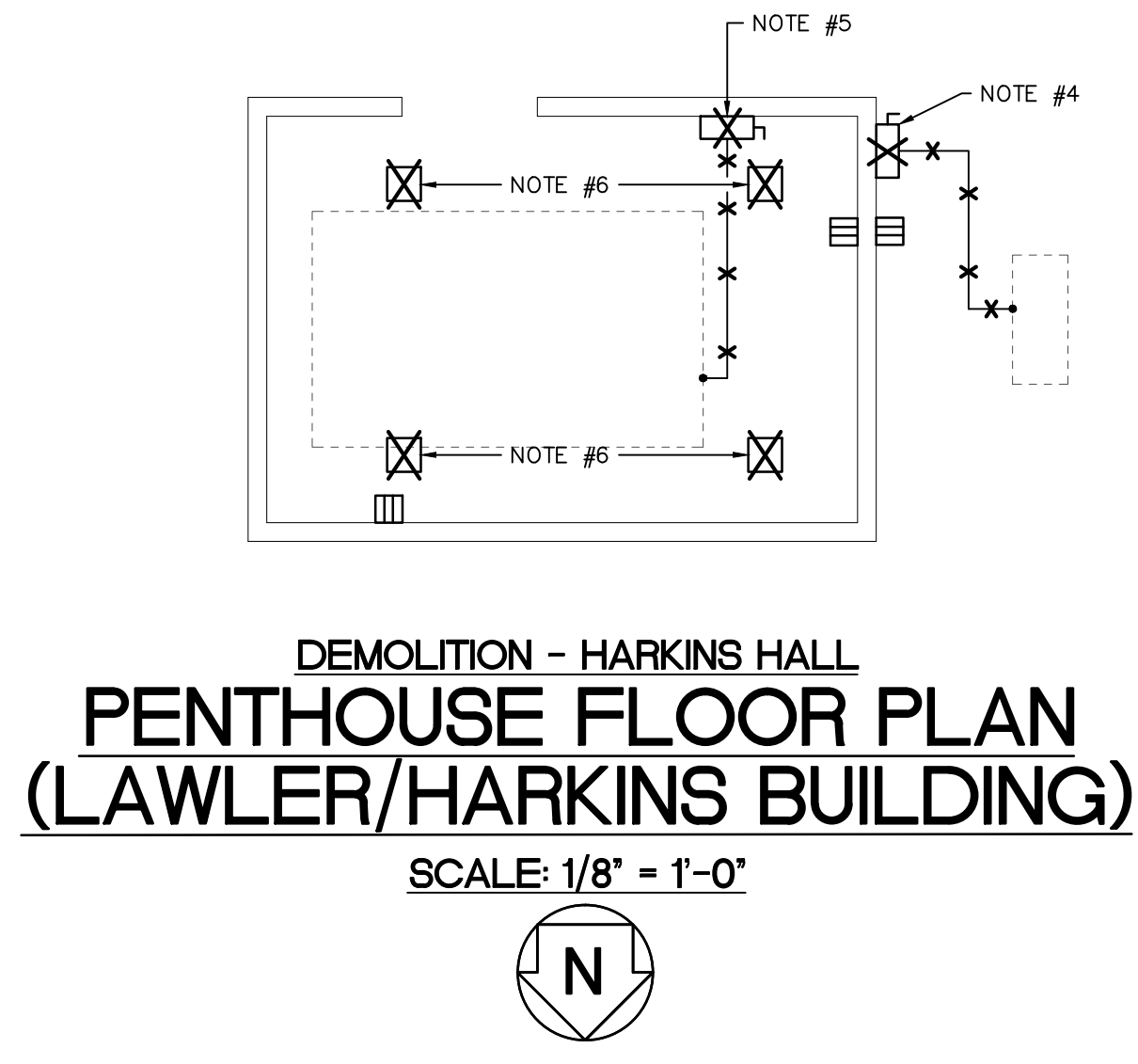
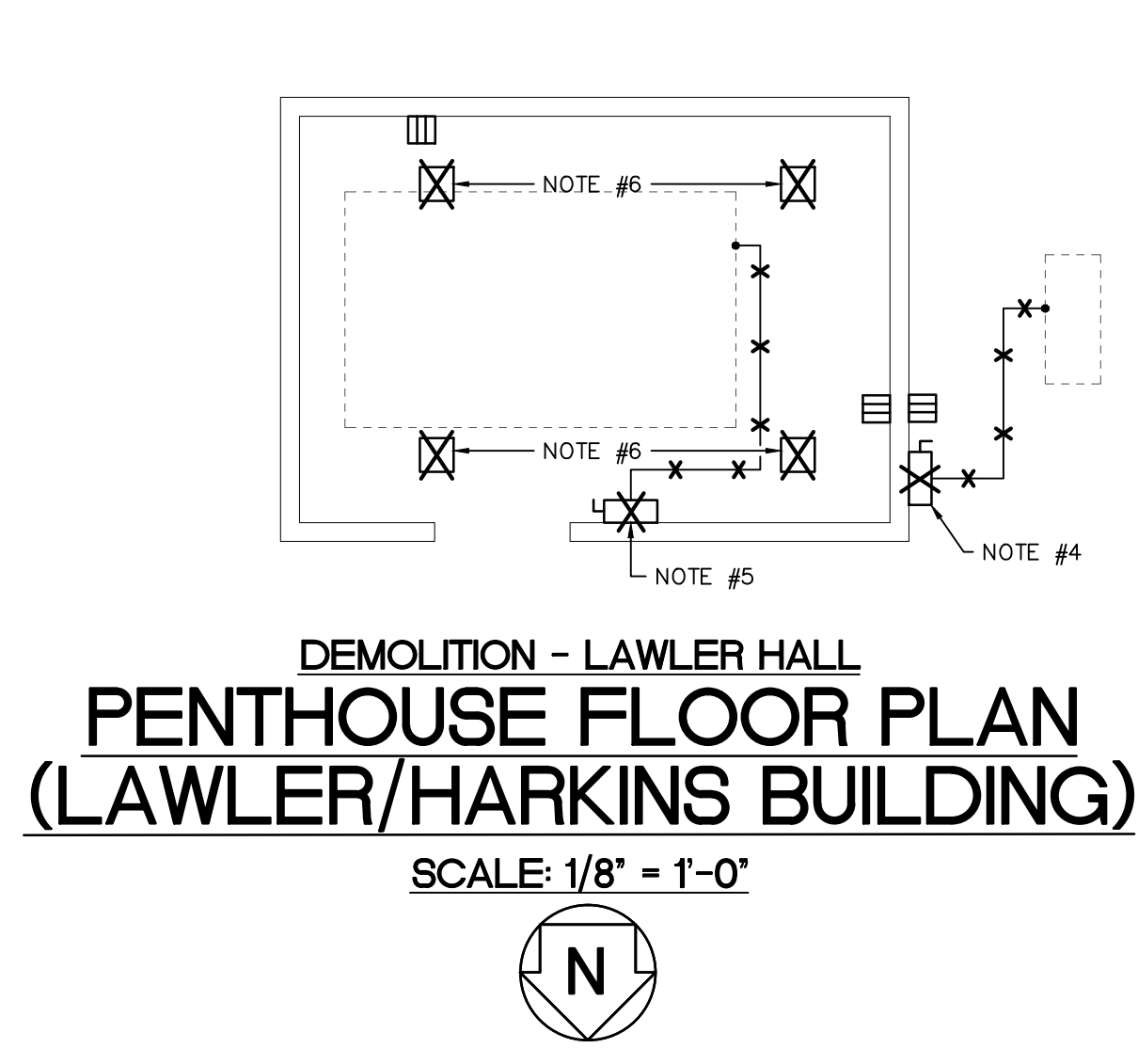
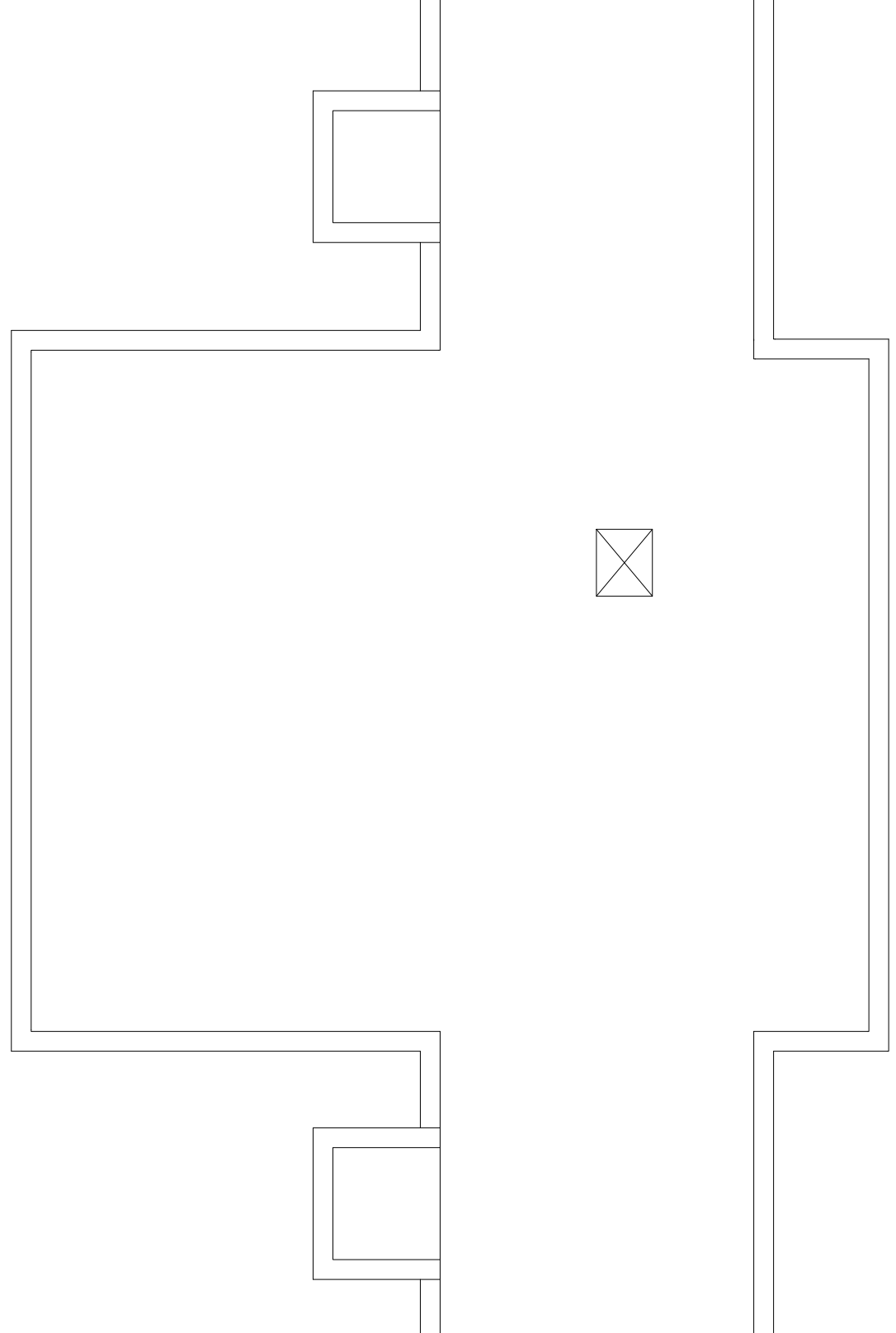
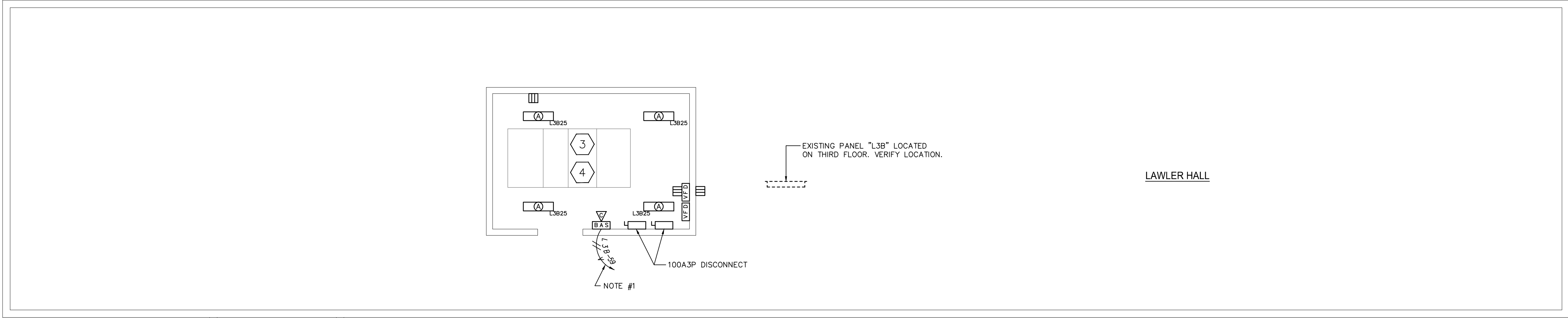
**Item No. 1:** Refer to Sheet E-1, and replace with the attached RE-1.

**Item No. 2:** Refer to Sheet E-2, and replace with the attached RE-2.

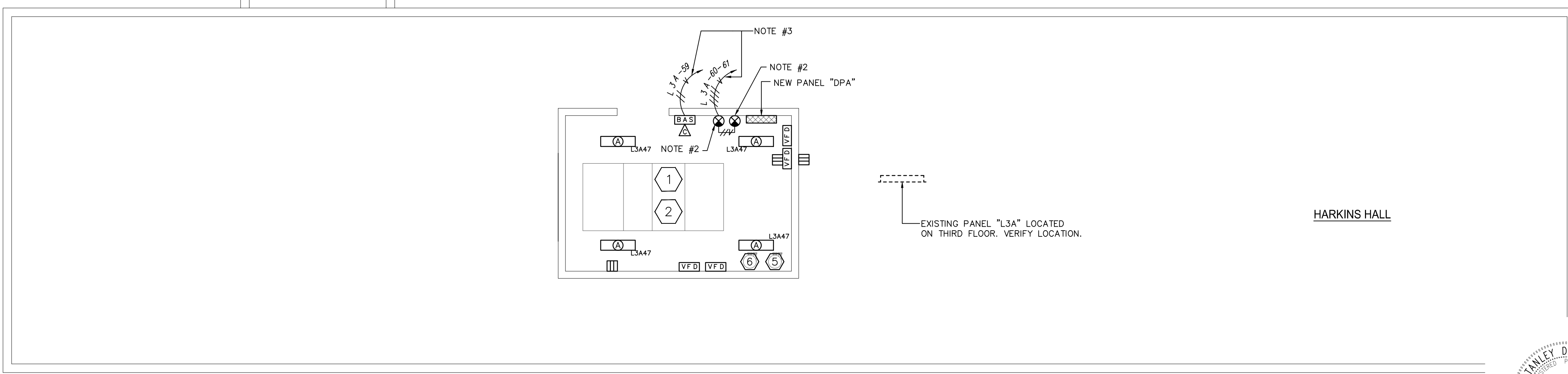
No other items in this addendum.

Sincerely,  
Stan Wagnon, AIA  
BURRIS/WAGNON ARCHITECTS, P.A.

End of Addendum No. 3



**DEMOLITION NOTE:**  
 WHERE SPECIFICALLY DEFINED BY NOTE OR SHOWN TO BE AN AREA TO BE DEMOLISHED, DISCONNECT AND REMOVE ALL EXISTING LIGHTING FIXTURES, ELECTRICAL EQUIPMENT, RECEPTACLES, EXPOSED CONDUIT, SURFACE DEVICE BOXES, PLATES, ETC. REMOVE ALL WIRE FROM EXISTING CONDUIT, CUT BACK, CAP AND ABANDON ALL CONCEALED CONDUITS. MAINTAIN AND RESTORE, IF INTERRUPTED, ALL BRANCH CIRCUITS AND FEEDERS PASSING THROUGH RENOVATED AREAS AND SERVING UNDISTURBED AREAS. EXISTING STRAIGHT LENGTHS OF CONDUIT FOUND TO BE REUSABLE MAY BE USED. ALL OTHER DEMOLISHED MATERIALS SHALL BE REMOVED FROM THE JOB SITE SUBJECT TO THE DEMOLITION DIRECTIVE ISSUED BY THE ARCHITECT. CONSULT WITH THE ARCHITECT PRIOR TO ANY DEMOLITION CONCERNING THE IMPLEMENTATION OF THIS NOTE.



- NOTES:**
1. CIRCUIT NUMBERS ARE FOR REFERENCE ONLY. CONNECT TO DEDICATED 20A1P BREAKER IN EXISTING PANEL "L3A".
  2. PROVIDE 30A, 120 VOLT BRANCH CIRCUIT FOR CONNECTION TO HEAT TAPE FOR OUTDOOR MECHANICAL PIPING INSTALLED ON ROOFS. PROVIDE NEMA 5-30R OUTLET OR HARDWARE TO HEAT TAPE CONNECTION AS REQUIRED. ROUTE NEW BRANCH CIRCUIT WITH 2 - #10, 1 - #10G TO PANEL "L3A" AND INSTALL A 30A1P, GFCI TYPE CIRCUIT BREAKER AND CONNECT.
  3. CIRCUIT NUMBERS ARE FOR REFERENCE ONLY. CONNECT TO DEDICATED 20A1P BREAKER IN EXISTING PANEL "L3B".
  4. DISCONNECT EXISTING ROOF TOP UNIT AND REMOVE ALL ASSOCIATED ELECTRICAL CONNECTIONS AND CIRCUITS ON ROOF.
  5. DISCONNECT EXISTING AHU AND REMOVE ALL ASSOCIATED ELECTRICAL CIRCUITS AS REQUIRED.
  6. DISCONNECT AND REMOVE EXISTING LIGHT FIXTURES.



**Schultz & Wynne**  
 Consulting Electrical Engineers  
 A Professional Association  
 JACKSON, MISSISSIPPI  
 FINAL DRAWING

REVISED 3-23-2020

W/O JOB NO: 220023  
 28 February 2020  
**Campus Roofing - Package B**  
**Delta State University**  
**(Cleveland, Mississippi)**  
 GS# 102-267 (PP002)  
 BURRIS/WAGNON ARCHITECTS, P.A.  
 5001 EAST WOODROW WILSON AVENUE JACKSON MS 39216 PH 6019697543 FAX 6019699374

RE-1

POWER CONNECTION SCHEDULE									
MARK	EQUIPMENT	VOLTAGE /PHASE	FLA	KW	HP	PANEL CKT. NO.	BRANCH CIRCUIT (1)	DISC. SW / FUSE (2)	REMARKS
1	AHU-1A	208/3	48.3	-	15	DPA-1	3 - #3, 1 - #8G, 1 1/4" c.	100A3P	3,4,5
2	AHU-1B	208/3	48.3	-	15	DPA-2	3 - #3, 1 - #8G, 1 1/4" c.	100A3P	3,4,5
3	AHU-1A	208/3	48.3	-	15	MSB-2	3 - #3, 1 - #8G, 1 1/4" c.	100A3P	3,4,5
4	AHU-1B	208/3	48.3	-	15	MSB-2	3 - #3, 1 - #8G, 1 1/4" c.	100A3P	3,4,5
5	CHP-1	208/3	25.3	-	7.5	DPA-3	3 - #8, 1 - #10G, 1" c.	60A3P	3,4,5
6	CHP-2	208/3	25.3	-	7.5	DPA-4	3 - #8, 1 - #10G, 1" c.	60A3P	3,4,5

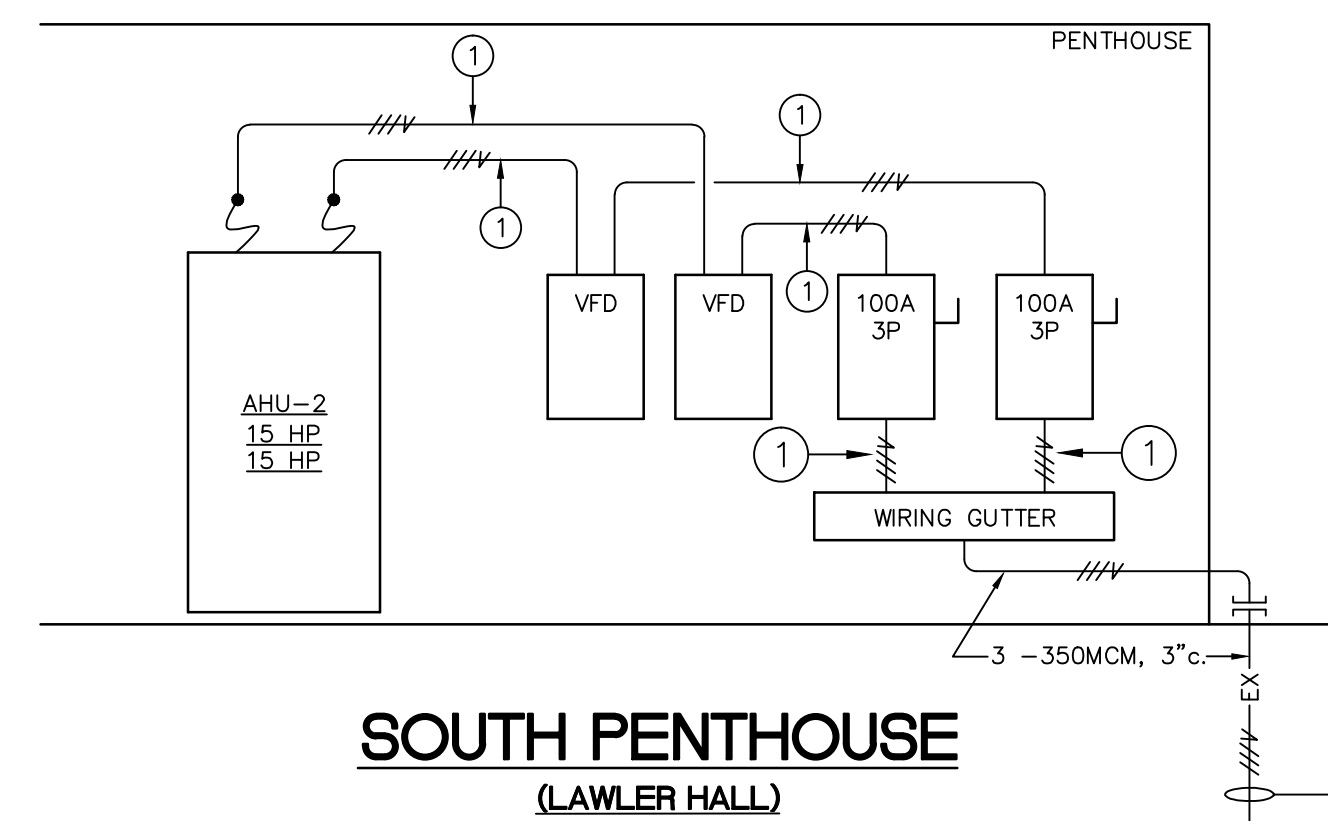
**POWER CONNECTION REMARKS:**

- CIRCUIT TO INCLUDE ONE (1) GREEN GROUNDING CONDUCTOR (G) SIZED PER BRANCH CIRCUIT SIZE UNLESS SHOWN TO BE SIZED DIFFERENTLY. MINIMUM CONDUCTOR REQUIREMENT 2-#12, 1-#12G, 1/2" c.
- DUAL ELEMENT TYPE FUSE AND SWITCH OF PROPER VOLTAGE. IF FUSE SIZE NOT SHOWN, UNIT TO BE UNFUSED.
- FINAL CONNECTION USING LIQUID TIGHT FLEXIBLE CONDUIT.
- WALL MOUNTED DISCONNECT SWITCH.
- CONNECT THRU VFD.

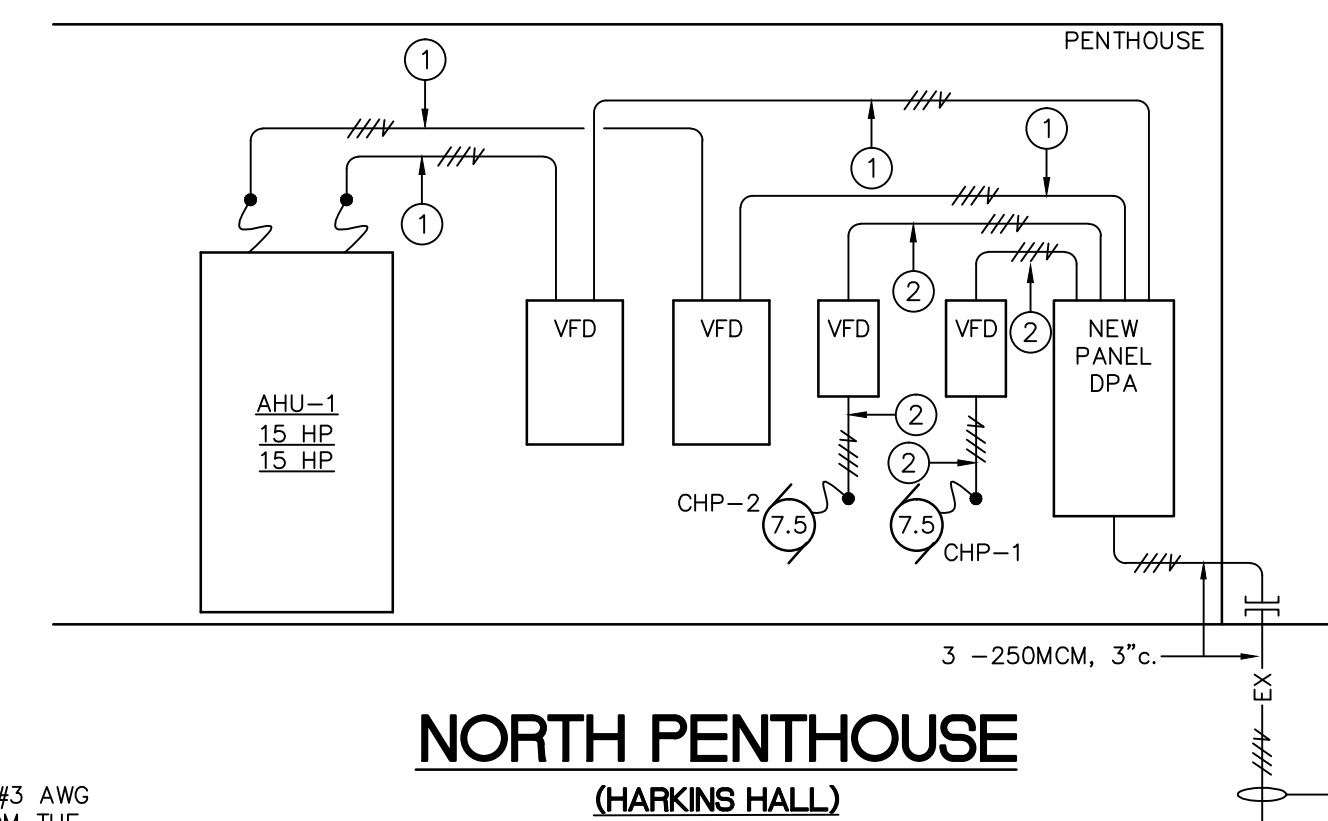
LIGHTING FIXTURE SCHEDULE						
VOLTS	SYMBOL	WATTS	DESCRIPTION	MANUFACTURER	CAT. NO.	MOUNTING
120	A	25	LED STRIP LIGHT, 3500K, 3000 LUMENS, 80 CRI	LITHONIA	ZL1N-L48-3000LM-FST-MVOLT-35K-80CRI-WH	EXISTING OUTLET BOX

PANEL "DPA"				
VOLTS: 208Y/120		MAIN BREAKER: 250A3P		
MOUNTING: SURFACE		GROUND BUS: 300A		
PHASE: 3 WIRE: 3				
CIRCUIT	POLES	AMPS	FRAME (K)	LOAD
1	3	100	22K	AHU-1A
2	3	100	22K	AHU-1B
3	3	50	22K	CHP-1
4	3	50	22K	CHP-2
5	3	-	-	SPACE
6	3	-	-	SPACE
7	3	-	-	SPACE

LEGEND	
	BRANCH CIRCUIT (CONDUIT AND WIRING) CONCEALED ABOVE CEILING OR IN WALL, NUMBER OF CONDUCTORS.
	(---) INDICATES GREEN GROUNDING CONDUCTOR SIZED PER BRANCH CIRCUIT UNLESS OTHERWISE NOTED.
	LED SURFACE MOUNTED FIXTURE WITH FIXTURE SYMBOL AND CIRCUIT NUMBER.
	COMPUTER OUTLET AND PLATE, PROVIDE ONE (1) CAT. 6 CABLE IN 3/4" c. TO THIRD FLOOR DATA CLOSET TERMINATED AT BOTH ENDS.
	EXISTING CONVENIENCE OUTLET, REPLACE WITH NEW GFI RECEPTACLE.
	GROUNDABLE RECEPTACLE, 120 VOLTS NEMA 5-30R, CIRCUIT NUMBER.
	POWER CONNECTION SCHEDULE MARK. SEE POWER CONNECTION SCHEDULE.
	DISTRIBUTION PANEL, SURFACE MOUNTING.
	CONNECTION TO VARIABLE FREQUENCY DRIVER.
	DISCONNECT SWITCH.
	CONNECTION TO BUILDING AUTOMATION SYSTEM.
	THROUGH ANY SYMBOL INDICATES BLANK UP, REMOVE OR ABANDON AS REQUIRED; THROUGH ANY CONDUIT INDICATES REMOVE IF ACCESSIBLE, PULL OUT CONDUCTORS IF INACCESSIBLE.



**SOUTH PENTHOUSE**  
(LAWLER HALL)



**NORTH PENTHOUSE**  
(HARKINS HALL)

**FEEDER LEGEND**

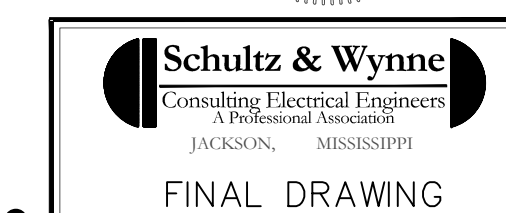
- 3 - #3, 1 - #8(G), 1 1/4" c.
- 3 - #8, 1 - #10(G), 1" c.

CONTRACTOR SHALL INSTALL A #3 AWG GREEN GROUND CONDUCTOR FROM THE WIRING GUTTER CONNECTIONS TO THE GROUND BUS OF THE MAIN SWITCHBOARD WHERE THIS FEEDER ORIGINATES ON THE GROUND FLOOR. FOR ESTIMATING PURPOSES, USE A DISTANCE OF 250 FEET. AT THE MAIN FUSED SWITCH FOR THIS FEEDER REPLACE THE 400A FUSES WITH 300A FUSES.

CONTRACTOR SHALL INSTALL A #3 AWG GREEN GROUND CONDUCTOR FROM THE WIRING GUTTER CONNECTIONS TO THE GROUND BUS OF THE MAIN SWITCHBOARD WHERE THIS FEEDER ORIGINATES ON THE GROUND FLOOR. FOR ESTIMATING PURPOSES, USE A DISTANCE OF 250 FEET. AT THE MAIN FUSED SWITCH FOR THIS FEEDER REPLACE THE 400A FUSES WITH 250A FUSES.

**POWER RISER DIAGRAM**

NO SCALE



REVISED 3-23-2020