

January 9, 2020

ADDENDUM NUMBER FOUR (4)

Project: Replacement Facility for
Tippah County Hospital
Ripley, MS
PN: 18015

FROM: Dean and Dean/Associates Architects, P.A.
4400 Old Canton Road, Suite 200
Jackson, MS 39211
(601) 939-7717

The following additions, changes, clarifications and/or substitutions to the Project Drawings as indicated, are hereby made a part of the Contract Documents. Acknowledge receipt of this Addendum by inserting its number and date in the Proposal Form where indicated.

Clarifications

Item #1: All aluminum door hardware is called out in specification section 084313, paragraph 2.06. The lock cylinder key insert will be provided as part of the Door Hardware Allowance.

Item #2: Door Schedule clarification:

Doors 111A and 1102A will be solid core wood doors installed in aluminum frames.

Architectural Specifications:

Item #1: Section 000120 – Door Schedule, change as follows:

Replace sheet 9 in the Door Schedule with the attached revised sheet.

- Added Door 1009A
- Revised Door 1000A - change door elevation type from "J" to be door elevation type "B" with full glass inserts and frame designation to type 3
- Revised Door 1000B- added frame designation to type 7

Item #2: Section 084413 – Glazed Aluminum Curtain Walls, as follows:

Add this section in its entirety.

Item #3: Section 088000, Glazing, change as follows:

Remove Paragraph E.1. Laminated glass is not required for glass type 2.

Item #4: Section 088000, Glazing, change paragraph #.4 to read as follows:

4. Install in all interior and exterior door locations, as well as all interior window frames unless noted otherwise.

Item #5: Section 088000, Glazing, paragraph 2.04 – Glazing Accessories, add sub-paragraph G. to read as follows:

- G. Speak-thru devices equal to CRL 11-1713 Catalog Number 834 – 5 5/16" satin anodized finish shall be provided where shown on drawings.

Architectural Drawings:

Item #1: Sheet G001 – Index, as follows:

Replace this sheet with the attached revised Sheet G001 in its entirety.

Item #2: Sheet A601 – Door and Frame Elevations, as follows:

Change aluminum frame elevation labeled as "5" to be Elevation "6".

Item #3: Sheets A601 and A602 – Glass type legend – Type G5, as follows:

Glass type G5 shall have frosted film applied over the entire surface of glass. Remove note regarding pattern.

Item #4: Sheet A602 – Interior window frame elevations, as follows:

Change elevation "6" to be provided as a hollow metal frame.

Item #5: Sheet A602 – Interior window frame, as follows:

Frame elevation 17 – change glass type for this frame to glass type G5. Add horizontal mullion to this frame per Detail 16/A504.

Item #6: Sheet A603 – Door and Frame details, as follows:

Omit Detail 10/A603 – not used.

Geotechnical/Pile Wall:

SEE ATTACHED PILE WALL ITEMS PROVIDED BY PRECISION ENGINEERING CORPORATION
Dated January 9, 2020.

Civil

SEE ATTACHED CIVIL ITEMS PROVIDED BY McMASTER & ASSOCIATES Dated January 9, 2020.

Mechanical:

SEE ATTACHED MECHANICAL ITEMS PROVIDED BY GSK Dated January 9, 2020.

Electrical:

SEE ATTACHED ELECTRICAL ITEMS PROVIDED BY JON D. RICE & ASSOCIATES, LLC
Dated January 9, 2020.

Replacement Facility for
Tippah County Hospital
Ripley, MS
Addendum #4
January 9, 2019
Page 3

END OF ADDENDUM NUMBER FOUR (4)

Dean and Dean/Associates
architects p.a.



Kenneth A. Oubre, AIA, Vice President



PLEASE ATTACH THIS ADDENDUM TO THE INSIDE FRONT COVER OF EACH SET OF SPECIFICATIONS.

DOOR & FRAME SCHEDULE

NO.	DOOR SIZE	H	THK	MTL	ELV	GLASS	LOUVER	FRAME		DETAIL			FIRE RATING LABEL	HARDWARE		REMARKS
								MTL	ELV	HEAD	JAMB	SILL		SET NO	KEYSIDE ROOM NO	
	W															
953A	3'-6"	7'-0"	1 3/4"	WD	A			HM	1	3/A604	4/A604					All wood and metal doors to have stainless steel protection panels unless noted otherwise
954A	3'-6"	7'-0"	1 3/4"	WD	A			HM	1	3/A604	4/A604					
955A	3'-0"	7'-0"	1 3/4"	WD	A			HM	1	3/A604	4/A604					
956A	3'-0"	7'-0"	1 3/4"	WD	A	3x33		HM	1	3/A604	4/A604					
957A	3'-0"	7'-0"	1 3/4"	WD	A			HM	1	3/A604	4/A604					
1000A	3'-6" PR	7'-0"	1 3/4"	WD	B	Full		HM	3							Opener, Closer w/Hold Open
1000B	3'-0"	7'-0"	1 3/4"	AL	E	Full		AL	7							Closer
1001A	2'-6"	10'-0"		AL	L			AL		7/A102F	8/A102F					Overhead Coiling Grille - Electric
1003A	3'-0"	7'-0"	1 3/4"	LAM	K	Round		HM		1/A607	2/A607					Double Acting Swing Doors
1003C	3'-0"	7'-0"	1 3/4"	WD	A			HM	1	3/A604	4/A604					Closer
1003D	3'-0" PR	7'-0"	1 3/4"	WD	B			HM	3	3/A604	4/A604					Stretcher Plates Both Sides
1004A	4'-0"	4'-0"														Closer w/Hold Open
1005A	3'-0"	7'-0"	1 3/4"	WD	A			HM	1	3/A604	4/A604					Stainless Cased Opening - Coordinate With Kitchen Equipment
1007A	3'-0"	7'-0"	1 3/4"	WD	A			HM	1	3/A604	4/A604					Closer w/Hold Open
1008A	3'-0"	7'-0"	1 3/4"	WD	A			HM	1	3/A604	4/A604					Closer w/Hold Open
1009A	3'-2"	7'-0"	1 3/4"	AL	E			AL	AA							Closer
1100A	3'-5"	7'-0"	1 3/4"	AL	G	Full Lite		AL		10/A604	11/A604	5/A604				Automatic Horizontal Sliding Entry Unit (7'-0"W), Auto Sensor
1100B	3'-5"	7'-0"	1 3/4"	AL	G	Full Lite		AL		1/A605	2/A605*					Automatic Horizontal Sliding Entry Unit (7'-0"W), No Threshold, Auto Sensor
1102A	3'-0"	7'-0"	1 3/4"	WD	A	Full Lite		AL								Frosted Film Applied To Glass
1103A	3'-6"	7'-0"	1 3/4"	WD	A			HM	1	3/A604	4/A604					Access Control
1107A	3'-0"	7'-0"	1 3/4"	WD	A			HM	1	3/A604	4/A604					
1108A	3'-0"	7'-0"	1 3/4"	WD	A			HM	1	3/A604	4/A604					
1109A	3'-0"	7'-0"	1 3/4"	WD	A			HM	1	3/A604	4/A604					
1110A	3'-6"	7'-0"	1 3/4"	WD	A	Full Lite		HM	1	3/A604	4/A604					
1111A	3'-6"	7'-0"	1 3/4"	WD	A			HM	1	3/A604	4/A604					Access Control
1111B	3'-6"	7'-0"	1 3/4"	WD	A			HM	1	3/A604	4/A604					
1112A	3'-0"	7'-0"	1 3/4"	WD	A			HM	1	3/A604	4/A604					
1113A	3'-0"	7'-0"	1 3/4"	WD	A			HM	1	3/A604	4/A604					
1115A	4'-0"	7'-0"	1 3/4"	WD	A			HM	1	3/A604	4/A604					
1116A	4'-0"	7'-0"	1 3/4"	WD	A			HM	1	3/A604	4/A604					

SECTION 084413
GLAZED ALUMINUM CURTAIN WALLS

PART 1 GENERAL

1.01 SECTION INCLUDES

- A. Aluminum-framed curtain wall, thermally broken.
- B. Perimeter sealant.

1.02 RELATED REQUIREMENTS

- A. Section 079005 - Joint Sealers: Perimeter sealant and back-up materials.
- B. Section 084313 - METAL-FRAMED STOREFRONTS AND WINDOWS: Entrance framing and doors.
- C. Section 088000 - Glazing.

1.03 REFERENCE STANDARDS

- A. AAMA CW-10 - Care and Handling of Architectural Aluminum From Shop to Site; 2015.
- B. AAMA 501.1 - Standard Test Method for Exterior Windows, Curtain Walls and Doors for Water Penetration Using Dynamic Pressure; 2005.
- C. AAMA 501.2 - Field Check of Metal Storefronts, Curtain Walls, and Sloped Glazing Systems for Water Leakage; 2009.
- D. AAMA 609 & 610 - Cleaning and Maintenance Guide for Architecturally Finished Aluminum (Combined Document); 2015.
- E. AAMA 611 - Voluntary Specification for Anodized Architectural Aluminum; 2012.
- F. AAMA 1503 - Voluntary Test Method for Thermal Transmittance and Condensation Resistance of Windows, Doors and Glazed Wall Sections; 2009.
- G. ASTM B221 - Standard Specification for Aluminum and Aluminum-Alloy Extruded Bars, Rods, Wire, Profiles, and Tubes; 2014.
- H. ASTM B221M - Standard Specification for Aluminum and Aluminum-Alloy Extruded Bars, Rods, Wire, Profiles, and Tubes [Metric]; 2013.
- I. ASTM E283 - Standard Test Method for Determining the Rate of Air Leakage Through Exterior Windows, Curtain Walls, and Doors Under Specified Pressure Differences Across the Specimen; 2004 (Reapproved 2012).
- J. ASTM E330/E330M - Standard Test Method for Structural Performance of Exterior Windows, Doors, Skylights and Curtain Walls by Uniform Static Air Pressure Difference; 2014.
- K. ASTM E331 - Standard Test Method for Water Penetration of Exterior Windows, Skylights, Doors, and Curtain Walls by Uniform Static Air Pressure Difference; 2000 (Reapproved 2009).
- L. SSPC-Paint 20 - Zinc-Rich Primers (Type I, "Inorganic," and Type II, "Organic"); 2002 (Ed. 2004).

1.04 ADMINISTRATIVE REQUIREMENTS

- A. Coordinate with installation of other components that comprise the exterior enclosure.
- B. Preinstallation Meeting: Conduct a preinstallation meeting one week before starting work of this section; require attendance by all affected installers.

1.05 PERFORMANCE REQUIREMENTS

- A. Design and size components to withstand the following load requirements without damage or permanent set, when tested in accordance with ASTM E 330, using loads 1.5 times the design wind loads and 10 second duration of maximum load.
 - 1. Member Deflection: Limit member deflection to flexure limit of glass in any direction, with full recovery of glazing materials.

- B. Movement: Accommodate movement between storefront and perimeter framing and deflection of lintel, without damage to components or deterioration of seals.
- C. Air Infiltration: Limit air infiltration through assembly to 0.06 cu ft/min/sq ft of wall area, measured at a reference differential pressure across assembly of 1.57 psf as measured in accordance with ASTM E 283.
- D. Water Leakage: None, when measured in accordance with ASTM E 331 with a test pressure difference of 2.86 lbf/sq ft.
- E. System Internal Drainage: Drain to the exterior by means of a weep drainage network any water entering joints, condensation occurring in glazing channel, and migrating moisture occurring within system.
- F. Expansion/Contraction: Provide for expansion and contraction within system components caused by cycling temperature range of 170 degrees F over a 12 hour period without causing detrimental effect to system components, anchorages, and other building elements.

1.06 SUBMITTALS

- A. See Section 013000 - Administrative Requirements, for submittal procedures.
- B. Product Data: Provide component dimensions, describe components within assembly, anchorage and fasteners, internal drainage details, glazing, hardware as required, and infill.
- C. Shop Drawings: Indicate system dimensions, framed opening requirements and tolerances, affected related Work, expansion and contraction joint location and details, and field welding required.
- D. Samples: Submit two samples 12 x 12 inches in size illustrating finished aluminum surface, glazing, infill panels, and glazing materials.
- E. Design Data: Provide framing member structural and physical characteristics and engineering calculations, and identify dimensional limitations; include load calculations at points of attachment to building structure.
- F. Design Data: Provide framing member structural and physical characteristics and engineering calculations, and identify dimensional limitations; include load calculations at points of attachment to building structure.
- G. Manufacturer's Certificate: Certify that the products supplied meet or exceed the specified requirements.
- H. Field Quality Control Submittals: Report of field testing for water penetration and air leakage.
- I. Warranty: Submit manufacturer warranty and ensure forms have been completed in Owner's name and registered with manufacturer.

1.07 QUALITY ASSURANCE

- A. Designer Qualifications: Design curtain wall and its structural support framing components under direct supervision of a Professional Structural Engineer experienced in design of this work and licensed at the State in which the Project is located.
- B. Manufacturer and Installer Qualifications: Company specializing in manufacturing aluminum glazing systems with minimum 5 years of documented experience.

1.08 MOCK-UP

- A. Work of this section to be included in the required mock-up wall as specified in Section 014000 - Quality Requirements.
- B. Locate where directed. Locate mock up to receive Southern sun exposure for proper viewing and approval.
- C. Approved mock-up shall remain until final acceptance of the project and shall serve as standard of quality for all masonry work.
- D. Mock-up may not remain as part of the Work.

1.09 DELIVERY, STORAGE, AND HANDLING

- A. Handle products of this section in accordance with AAMA CW-10.
- B. Protect finished aluminum surfaces with wrapping. Do not use adhesive papers or sprayed coatings that bond to aluminum when exposed to sunlight or weather.

1.10 FIELD CONDITIONS

- A. Do not install sealants when ambient temperature is less than 40 degrees F. Maintain this minimum temperature during and 48 hours after installation.

1.11 WARRANTY

- A. See Section 017800 - CLOSEOUT SUBMITTALS, for additional warranty requirements.
- B. Correct defective Work within a 1 year period after Date of Substantial Completion.
- C. Provide five year manufacturer warranty against failure of glass seal on insulating glass units, including interpane dusting or misting. Include provision for replacement of failed units.
- D. Provide five year manufacturer warranty against excessive degradation of exterior finish. Include provision for replacement of units with excessive fading, chalking, or flaking.

PART 2 PRODUCTS

2.01 MANUFACTURERS

- A. Glazed Aluminum Curtain Walls:
 - 1. Kawneer North America: www.kawneer.com.
 - 2. Oldcastle Building Envelope: www.oldcastlebe.com.
 - 3. United States Aluminum Corp: www.usalum.com.
 - 4. YKK AP America Inc: www.ykkap.com.
 - 5. Substitutions: See Section 016000 - PRODUCT REQUIREMENTS.

2.02 CURTAIN WALL

- A. Basis of Design: Kawneer 1600 Wall System 1 Curtain Wall, thermally broken.
- B. Aluminum-Framed Curtain Wall: Factory fabricated, factory finished aluminum framing members with infill, and related flashings, anchorage and attachment devices.
 - 1. Outside glazed, with pressure plate and mullion cover, where indicated on drawings.
 - 2. Vertical Mullion Face Width: 2-1/2 inches.
 - 3. Vertical Mullion Depth From Face of Glazing to Back of Frame: 6" and 7 1/2" as shown on drawings inches.
 - 4. Finish: Class II natural anodized. Color: Clear Anodized
 - a. Factory finish surfaces that will be exposed in completed assemblies.
 - b. Coat concealed metal surfaces that will be in contact with cementitious materials or dissimilar metals with bituminous paint.
 - 5. Provide flush joints and corners, weathersealed, accurately fitted and secured; prepared to receive anchors; fasteners and attachments concealed from view; reinforced as required for imposed loads.
 - 6. Construction: Eliminate noises caused by wind and thermal movement, prevent vibration harmonics, and prevent "stack effect" in internal spaces.
 - 7. System Internal Drainage: Drain to the exterior by means of a weep drainage network any water entering joints, condensation occurring in glazing channel, and migrating moisture occurring within system.
 - 8. Location: As indicated in drawings.
- C. Structural Performance Requirements: Design and size components to withstand the following load requirements without damage or permanent set.
 - 1. Design Wind Loads: Comply with the applicable code.
 - 2. Seismic Loads: Design and size components to withstand seismic loads and sway displacement in accordance with the requirements of local code. Test according to AAMA 501.4.

3. Movement: Accommodate the following movement without damage to components or deterioration of seals:
 - a. Expansion and contraction caused by 180 degrees F surface temperature.
 - b. Expansion and contraction caused by cycling temperature range of 170 degrees F over a 12 hour period.
 - c. Movement of curtain wall relative to perimeter framing.
 - d. Deflection of structural support framing, under permanent and dynamic loads.
- D. Water Penetration Resistance on Manufactured Assembly: No uncontrolled water on indoor face when tested as follows:
 1. Test Pressure Differential: 12 psf. As defined in AAMA 501.
 2. Test Method: ASTM E331.
- E. Air Leakage: Maximum of 0.06 cu ft/min sq ft of wall area, when tested in accordance with ASTM E283 at 6.24 psf pressure differential across assembly.
- F. Thermal Performance Requirements:
 1. Condensation Resistance Factor of Framing: 66, minimum, measured in accordance with AAMA 1503.
 2. Thermal Transmittance (U-factor): When tested to AAMA Specification 1503, the thermal transmittance (U-factor) shall not be more than: 0.66

2.03 COMPONENTS

- A. Aluminum Framing Members: Tubular aluminum sections, thermally broken with interior section insulated from exterior, drainage holes and internal weep drainage system.
 1. Cross-Section: As indicated on drawings.
 2. Structurally Reinforced Members: Extruded aluminum with internal reinforcement of structural steel member as required by framing manufacturer to meet or exceed local codes.
- B. Glazing: As specified in Section 088000.

2.04 MATERIALS

- A. Extruded Aluminum: ASTM B221 (ASTM B221M).
- B. Fasteners: Stainless steel; type as required or recommended by curtain wall manufacturer.
- C. Perimeter Sealant: Type 2 specified in Section 079005.
- D. Glazing Gaskets: Type to suit application to achieve weather, moisture, and air infiltration requirements.
- E. Glazing Accessories: As specified in Section 088000.
- F. Touch-Up Primer for Galvanized Steel Surfaces: SSPC-Paint 20, zinc rich.

2.05 FINISHES

- A. Class II Natural Anodized Finish: AAMA 611 AA-M12C22A31 Clear anodic coating not less than 0.4 mils thick.
- B. Color: Clear Anodized.

2.06 FABRICATION

- A. Fabricate components with minimum clearances and shim spacing around perimeter of assembly, yet enabling installation and dynamic movement of perimeter seal.
- B. Accurately fit and secure joints and corners. Make joints flush, hairline, and weatherproof.
- C. Prepare components to receive anchor devices. Fabricate anchors.
- D. Coat concealed metal surfaces that will be in contact with cementitious materials or dissimilar metals with bituminous paint.
- E. Arrange fasteners and attachments to conceal from view.
- F. Reinforce framing members as required by local codes for imposed loads.

- G. Finishing: Apply factory finish to all surfaces that will be exposed in completed assemblies.
 - 1. Touch-up surfaces cut during fabrication so that no natural aluminum is visible in completed assemblies, including joint edges.

PART 3 EXECUTION

3.01 EXAMINATION

- A. Verify dimensions, tolerances, and method of attachment with other related work.
- B. Verify that curtain wall openings and adjoining air and vapor seal materials are ready to receive work of this section.
- C. Verify that anchorage devices have been properly installed and located.

3.02 INSTALLATION

- A. Install curtain wall system in accordance with manufacturer's instructions.
- B. Attach to structure to permit sufficient adjustment to accommodate construction tolerances and other irregularities.
- C. Provide alignment attachments and shims to permanently fasten system to building structure.
- D. Align assembly plumb and level, free of warp or twist. Maintain assembly dimensional tolerances, aligning with adjacent work.
- E. Provide thermal isolation where components penetrate or disrupt building insulation.
- F. Install sill flashings. Turn up ends and edges; seal to adjacent work to form water tight dam.
- G. Coordinate attachment and seal of perimeter air and vapor barrier materials.
- H. Install perimeter sealant in accordance with Section 079005.
- I. Touch-up minor damage to factory applied finish; replace components that cannot be satisfactorily repaired.

3.03 TOLERANCES

- A. Maximum Variation from Plumb: 0.06 inches every 3 ft non-cumulative or 0.5 inches per 100 ft, whichever is less.
- B. Maximum Misalignment of Two Adjoining Members Abutting in Plane: 1/32 inch.
- C. Sealant Space Between Curtain Wall Mullions and Adjacent Construction: Maximum of 3/4 inch and minimum of 1/4 inch.

3.04 FIELD QUALITY CONTROL

- A. Provide services of curtain wall manufacturer's field representative to observe for proper installation of system and submit report.
- B. See Section 014000 - QUALITY REQUIREMENTS, for independent field testing and inspection requirements, and requirements for monitoring quality of specified product installations.
- C. Water-Spray Test: Provide water spray quality test of installed curtain wall components in accordance with AAMA 501.2 during construction process and before installation of interior finishes.
 - 1. Perform a minimum of two tests in each designated area as directed by Architect.
 - 2. Conduct tests in each area prior to 50 percent completion of this work.
- D. Repair or replace curtain wall components that have failed designated field testing, and retest to verify performance conforms to specified requirements.

3.05 CLEANING

- A. Remove protective material from pre-finished aluminum surfaces.
- B. Wash down surfaces with a solution of mild detergent in warm water, applied with soft, clean wiping cloths, take care to remove dirt from corners, and wipe surfaces clean.
- C. Upon completion of installation, thoroughly clean aluminum surfaces in accordance with AAMA 609 & 610.

D. Remove excess sealant by method acceptable to sealant manufacturer.

3.06 PROTECTION

A. Protect installed products from damage until Date of Substantial Completion.

END OF SECTION

Geotechnical Engineering
Hydraulic Engineering
Civil Engineering
Surveying

276 County Road 101
Oxford, MS 38655
oxford@pecorpms.com



Land Planning/Subdivisions
Road and Bridge Design
Utility System Design
Materials Testing

Phone 662-234-8539
Fax 662-234-8639
www.pecorpms.com

January 9, 2020

ADDENDUM NO. FOUR (4) – SHEET PILE WALL ITEMS

Replacement Facility for Tippah County Hospital
Ripley, Mississippi
Precision Engineering Corporation

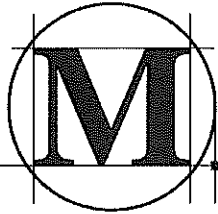
Plan Holders,

The following changes and clarifications are hereby made a part of and take precedence over conflicting sections of the Drawings and Specifications.

GENERAL INFORMATION AND CLARIFICATIONS:

- 1.1 Sheet 7.1 Specification 1. shall include JZ 112 Grade 60 sheet pile as an approved equivalent.

END OF SHEET PILE WALL ITEMS FOR ADDENDUM NO. FOUR (4)



McMASTER & ASSOCIATES, INC.
CIVIL ENGINEERS & LAND SURVEYORS

January 9, 2019

ADDENDUM NO. FOUR (4) – CIVIL ENGINEERING ITEMS

Replacement Facility for Tippah County Hospital

Ripley, Mississippi

McMaster & Associates, Inc. – M-2696

The following changes and clarifications are hereby made a part of and take precedence over conflicting sections of the Drawings and Specifications.

CIVIL GENERAL INFORMATION AND CLARIFICATIONS:

- 1.1 Item #1 – All water main shall be P.V.C.-C-900 as described in Note 13 under General Utility Notes on Sheet C0.1-General Notes.
- 1.2 Item #2 – C153 (Compact Fittings) are an acceptable substitute to C110 (Full-Body Fittings) for the proposed water main.
- 1.3 Item #3 – The water meter and vault shall be approved by the provider, the City of Ripely, MS.
- 1.4 Item #4 – There are no “Domestic Only” requirements as part of the contract.

END OF CIVL ITEMS FOR ADDENDUM NO. FOUR (4)

REPLACEMENT FACILITY FOR TIPPAAH COUNTY HOSPITAL

A. Mechanical Clarifications

1. Regarding Showers. Shower enclosures/bases are specified in Section 102116 – SHOWER UNITS AND SOLID SURFACE FABRICATIONS. Shower valves/fittings are specified in Section 220440 PLUMBING FIXTURES, TRIM AND ACCESSORIES. All items are to be provided by the Contractor.
2. Regarding Medical Gas Ceiling Column. The medical gas ceiling column in Operating Room 621 is an Owner Provided Contractor Installed piece of equipment.
3. Regarding Section 230855 AIR HANDLING UNITS. There shall be a variable frequency drive (VFD) for each individual supply fan motor.
4. Regarding Section 230980 CONTROLS AND INSTRUMENTATION. Isolation room monitors shown on Drawings shall be connected to the HVAC Controls System.

B. Mechanical Specifications

1. Section 220440 PLUMBING FIXTURES, TRIM AND ACCESSORIES – Add new paragraph 2.5.S as follows:
 - S. BT-1 – Bathtub (non functioning)
 - a. Fixture: Kohler Model K-1956-LA-0. 30"x60"x22 high molded tub with textured bottom surface
 - b. Shower Trim: None.
 - c. Accessories and Trim:
Kohler Model K-7271-CP brass overflow bath drain. Contractor shall plug drain and overflow connections.
2. Section 220480 MEDICAL GAS AND VACUUM SYSTEMS – Add new paragraph 2.1.F as follows:
 - F. Below grade oxygen piping from building to remote bulk oxygen system shall be Type 'K' copper tube complying with ASTM B 819, Standard Specification for Seamless Copper Tube for Medical Gas Systems. Piping at the building entrance and under the foundation for the bulk oxygen supply system shall be sleeved with schedule 40 PVC.
3. Section 230980 CONTROLS AND INSTRUMENTATION – Delete paragraph 1.7.A and replace with new paragraph 1.7.A as follows:
 - A. A complete wiring system shall be provided for all direct digital control (DDC) and electric controlled apparatus. All wiring shall be installed in a neat, workmanlike manner, of sufficient size and tested to be continuous and without unnecessary "short".

Wiring shall be as follows:

1. Exposed Areas and Mechanical Equipment Rooms: Wiring shall be routed in metallic conduit per *Division 26 and 28* requirements. Provide flexible conduit connections to rotating equipment.
2. Concealed, Accessible Areas: Wiring may be routed outside in above ceiling accessible spaces conduit, however wiring outside conduit shall be sheathed with plenum rated jacket with maximum rating of 50/25 smoke developed/fire rated per NFPA 90A.
 - a. All wiring will be routed in the bar joists and/or roof structure space and supported with tie-straps at maximum 6'-0" on center.
 - b. All drops and risers to HVAC equipment, fans, sensors, etc., will have a tie-strap installed directly above each device to insure a vertical support to the device.
 - c. Any open wiring that enters a conduit in the walls or drop/rise to connect equipment will have a minimum of 12" of wire looped outside the conduit above the ceiling and will be attached utilizing a tie-strap within 12" of the conduit end or connection.
3. Inaccessible Areas: Same as #1 above - includes wiring in walls, above hard ceilings, in chases, etc.
4. Inside Panels or Unit Enclosures: Wiring may be run outside conduit and neatly tied in bundles for neatness and function.
5. Wiring in exterior and moist environments shall be routed in weatherproof liquid tight conduit with matching fittings and connections.
6. Minimum gauge for low voltage (24VAC or less) control wiring shall be 18 AWG copper solid conductor(s).

C. Mechanical Drawings

1. Sheet M403 - Mechanical Details. Delete sheet in its entirety and replace with revised sheet attached. Added SOUND ATTENUATION R/A TRANSFER DUCT DETAIL.

END OF MECHANICAL ITEMS FOR ADDENDUM

Jon D. Rice & Associates, LLC



Electrical Engineering Consultants
5403 Castlewoods Court - Suite G - Flowood, MS - 39232
Tel: 601-919-8040 Fax: 601-919-8060

January 9, 2020

Dean & Dean Architects
Attn: Kenny Oubre/Brad Heath
P.O. Box 4685
Jackson, MS 39216

Re: Replacement Facility for Tippah County Hospital – Addendum #4 (Electrical)

Electrical addendum items are as follows:

Sheet E001

1. The Nurse Call Legend has been updated.

Sheet E002

1. Four Primary conduits shall be shown at the Utility Company Transformer for Loop Feed Installation.
2. Provide Meter Base and coordinate installation of meter on transformer with Utility Company.

Sheet E007

1. Provide eight 30A/1P receptacles in panel LUPS1 for IT Rack receptacles.

Sheet E101

1. Primary Raceway has been added to the site for temporary and permanent power.
2. Telecom Service raceways have been added.
3. An Exterior Lighting Control Detail shall be added.
4. Concrete encased conduits in duct banks shall be Schedule 40 PVC, with Rigid GRC large radius sweeping elbows.

Sheet E201A

1. The light fixture in Soiled Linen 011 shall be a type "A2" fixture.
2. Fixture type "D1" in Corridor 003 shall be a type "D2" fixture.

Sheet E201B

1. Only two lighting zones will be controlled from the pillow speaker. Fixture type "L" shall be on one zone, and type "K" fixtures shall be on the other zone. Fixture type A1 shall be controlled by three way switching. Provide one switch at the entry and one switch on the head wall adjacent to the patient bed. The type "K" fixture over the couch in the Patient Rooms shall remain on the local dimmer as drawn.
2. The light fixtures in Staff Toilet 934 and 935 shall be type "B3" fixtures.

Sheet E301A

1. An "S" inside a circle in Phleb. 300 represents a connection to a solenoid valve to shut off water to the adjacent Specimen Toilet 301.

Sheet E301B

1. Circuit L1NC-2 in Nurse Manager 936 should be L2NC-2.
2. There are some receptacle circuits in the Emergency Department area, and Staff Area that are shown to go to Panel L1EQA. These circuits shall go to Panel L2EQA.
3. Panel L2NC shall be installed in Electrical Room 941.
4. A Nurse Call Control Cabinet shall be located in Electrical Room 941 and shall be connected to circuit L2CRA-83.
5. Provide four NEMA L5-30R receptacles in IT Room 030. Install two above each IT rack. Connect each receptacle to a dedicated 30A/1P circuit breaker in panel LUPS1.

Sheet E301C

1. An "S" inside a circle in Lab/Med Room 1222 represents a connection to a solenoid valve to shut off water to the adjacent Patient Toilets 1224, & 1225.

2. A rectangle with T/P in Lab/Med Room 1222 represents a Tele/Power pole. Tele/Power pole shall be equal to Wiremold #25DTP-4ACT (Color shall be selected by Architect)

Sheet E301D

1. Provide four NEMA L5-30R receptacles in IT Room 009. Install two above each IT rack. Connect each receptacle to a dedicated 30A/1P circuit breaker in panel LUPS1.
2. A Nurse Call Control Cabinet shall be located in IT Server 009 and shall be connected to circuit L1CRA-25.

Sheet E401A

1. An emergency pull station and dome light shall be installed in Patient Toilet 213. This shall be a small stand-alone system with audible alarm. Connect to nearest Nurse Call Console.

Sheet E401B

1. Nurse Call Devices have been modified in the Patient Room.
 - a. The Electrical Contractor shall provide a 3-conductor low voltage cable between the patient station at the headwall and the TVs for bed and pillow speaker control. The CATV contractor shall provide wall plates and necessary jumpers for connection to the TV.
2. A Staff Station has been removed from Med Room 938 and the Duty Station has been relocated to the door.
3. A Duty Station has been added to Equipment Room 932 and Nourish. 937.
4. A Staff Station has been changed to a Duty Station in Staff Break Room 956.
5. The Exam Rooms in the Emergency Department shall have Patient Bed Stations with Integral Code Blue, and Pillow Speaker with TV control. The Electrical Contractor shall provide a 3-conductor low voltage cable between the patient station at the headwall and the TVs for bed and pillow speaker control. The CATV contractor shall provide wall plates and necessary jumpers for connection to the TV.
6. A diamond with a "W" in it indicates a nurse call wet location emergency pull station. The legend has been updated to show this.

Sheet E401C

1. The Exam Rooms in the Emergency Department shall have Patient Bed Stations with Integral Code Blue, and Pillow Speaker with TV control. The Electrical Contractor shall provide a 3-conductor low voltage cable between the patient station at the headwall and the TVs for bed and pillow speaker control. The CATV contractor shall provide wall plates and necessary jumpers for connection to the TV.
2. The circuit with an "M" in Corridor 1142, between the Trauma Rooms indicates a rough-in for a monitor. Coordinate mounting height with Owner and General Contractor prior to rough-in.
3. An emergency pull station and dome light shall be installed in Public Toilets 1107, 1108, and 1201. This shall be a small stand-alone system with audible alarm. Connect to nearest Nurse Call Console.
4. An emergency pull station and dome light shall be installed in Patient Toilets 1224 and 1225. This shall be a small stand-alone system with audible alarm. Connect to nearest Nurse Call Console.

Sheet E401D

1. An emergency pull station shall be installed in Patient Toilet 502, and a dome light shall be installed at the door to CT 501 in Corridor 500. This shall be a small stand-alone system with audible alarm. Connect to nearest Nurse Cal Console.
2. An emergency pull station and dome light shall be installed in Patient Toilet 213. This shall be a small stand-alone system with audible alarm. Connect to nearest Nurse Call Console.
3. The Pre-Op Rooms in the Operating Room area shall have Patient Bed Stations with Integral Code Blue, and Pillow Speaker with TV control. The Electrical Contractor shall provide a 3-conductor low voltage cable between the patient station at the headwall and the TVs for bed and pillow speaker control. The CATV contractor shall provide wall plates and necessary jumpers for connection to the TV.
4. The Post-Op Rooms in the Operating Room Area shall have emergency pull stations and code blue stations.
5. A duty station has been added to Staff Breakroom 613.
6. A staff station has been added to Decontam. 619.

Sheet E601

1. Panel L2NC shall be installed in Electrical Room 941.

2. All transformers, excluding T1EQK, and T1EQA shall be suspended from the structure. See detail 8, Sheet E602.

Sheet E602

1. The Pillow Speaker shall only control Lighting types "L" and "K". Pillow Speaker shall be provided by the Nurse Call manufacturer.

Sheet E603

1. A four-prong ground jack shall be installed on each wall in OR 621 at 42" AFF.

Sheet E606

1. A cable reel detail has been added.
2. Headwall rough-in details for the Trauma rooms and Patient Rooms has been added.

Nurse Call Specifications (Section 27 52 23)

1. Nurse Call Controller, Part 2.3, Letter A, Number 3.
 - a. VoIP audio to Nurse Call Network, VoIP Nurse Console, VoIP staff terminal, wire or wireless phones via SIP protocol. VoIP digital audio stream out to rooms without IP overhead signaling.

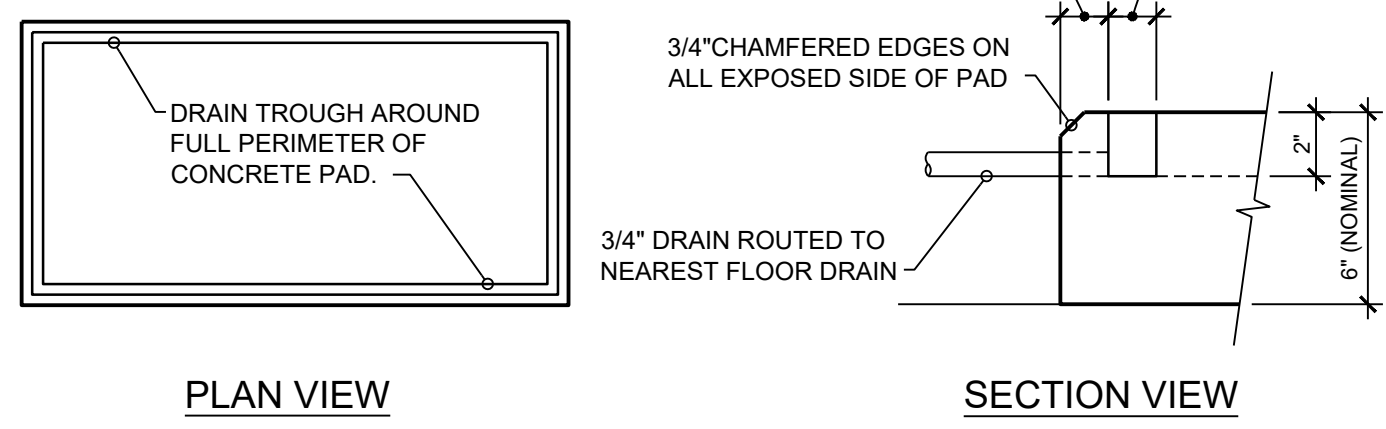
Any modifications in this addendum that are not accompanied with a revised drawing shall be noted on the as built redlines at the completion of the project. Revised Drawings have been provided for the following sheets:

1. E001, E101, E401A, E401B, E401C, E401D, and E606

End of Addendum.

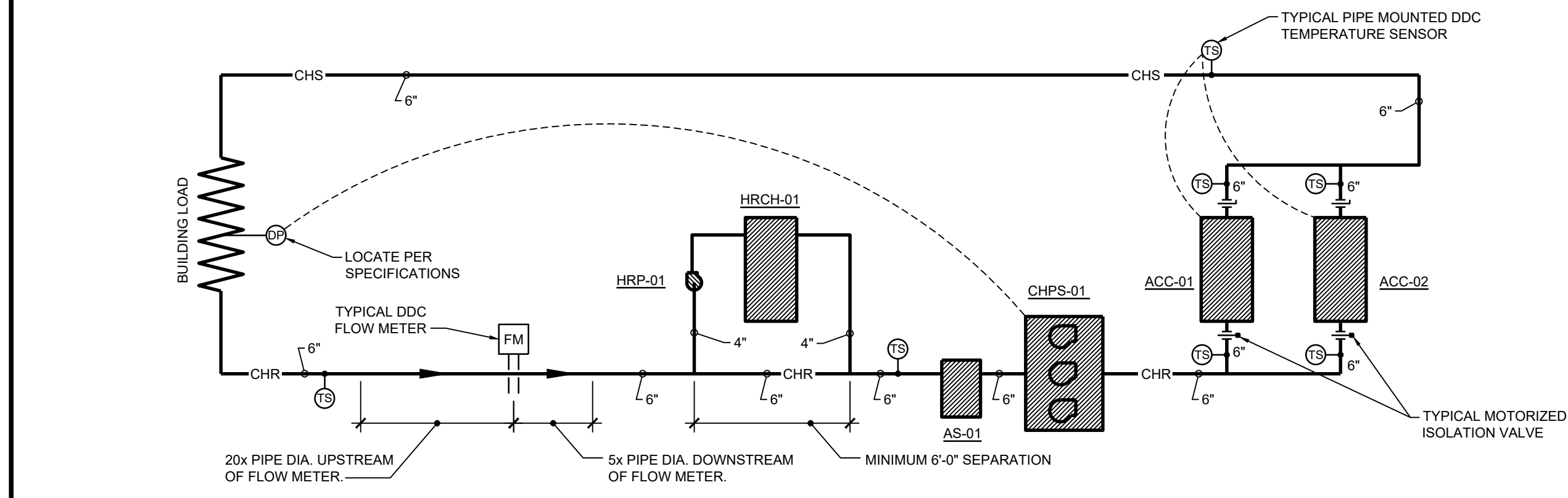
Thank you,

Michael Layman

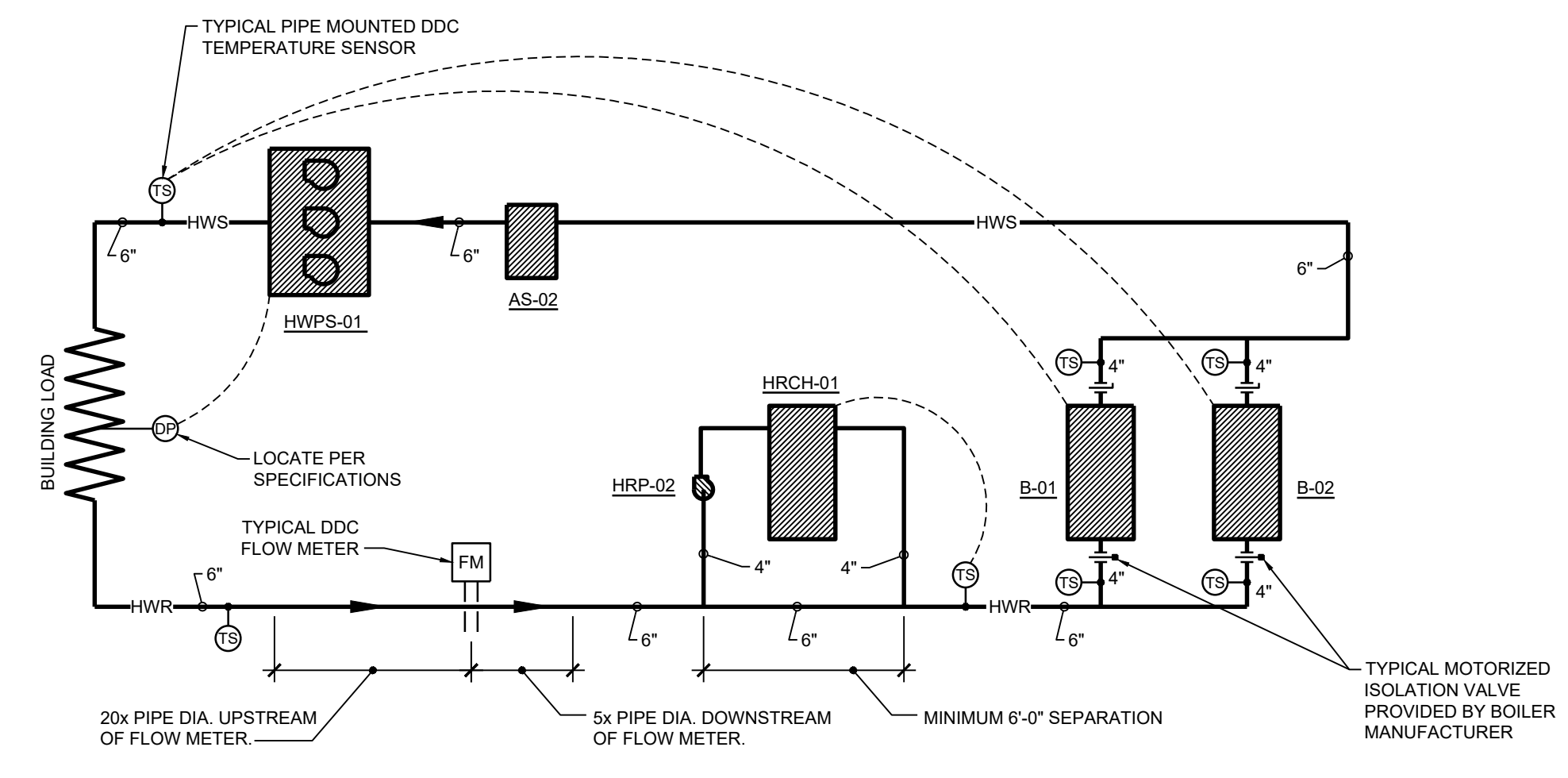


CONCRETE PAD WITH DRAIN CHANNEL DETAIL
N.T.S.

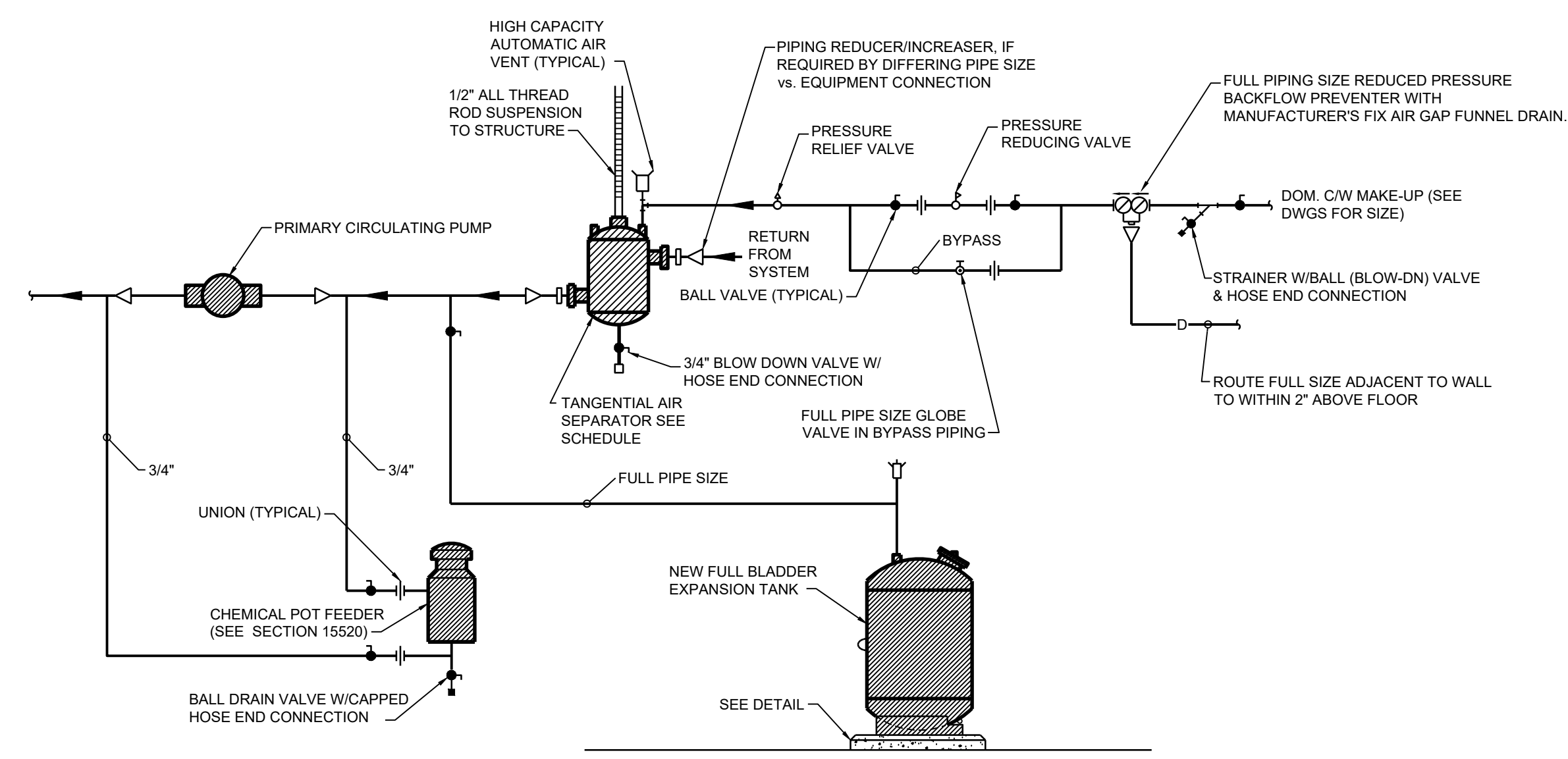
- NOTES:
1. PROVIDE IN MECHANICAL ROOMS AT PUMPS, EXPANSION TANKS, HEAT EXCHANGERS, BOILERS, ETC.
 2. PROVIDE IN WATER HEATER ROOMS AT FLOOR MOUNTED WATER HEATERS, STORAGE TANKS, EXPANSION TANKS, ETC.
 3. CONCRETE PADS MAY BE COMBINED AT ADJACENT PIECES OF EQUIPMENT (SEE MECHANICAL ROOMS FOR GENERAL PAD LAYOUT).



CHILLED WATER PIPING SCHEMATIC
N.T.S.

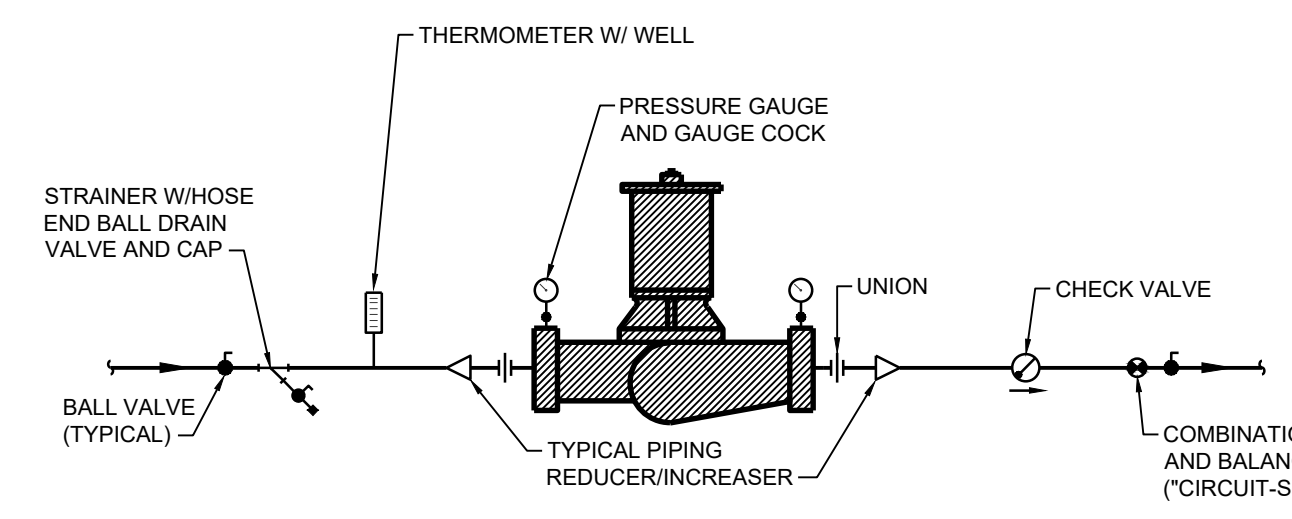


HEATING WATER PIPING SCHEMATIC
N.T.S.

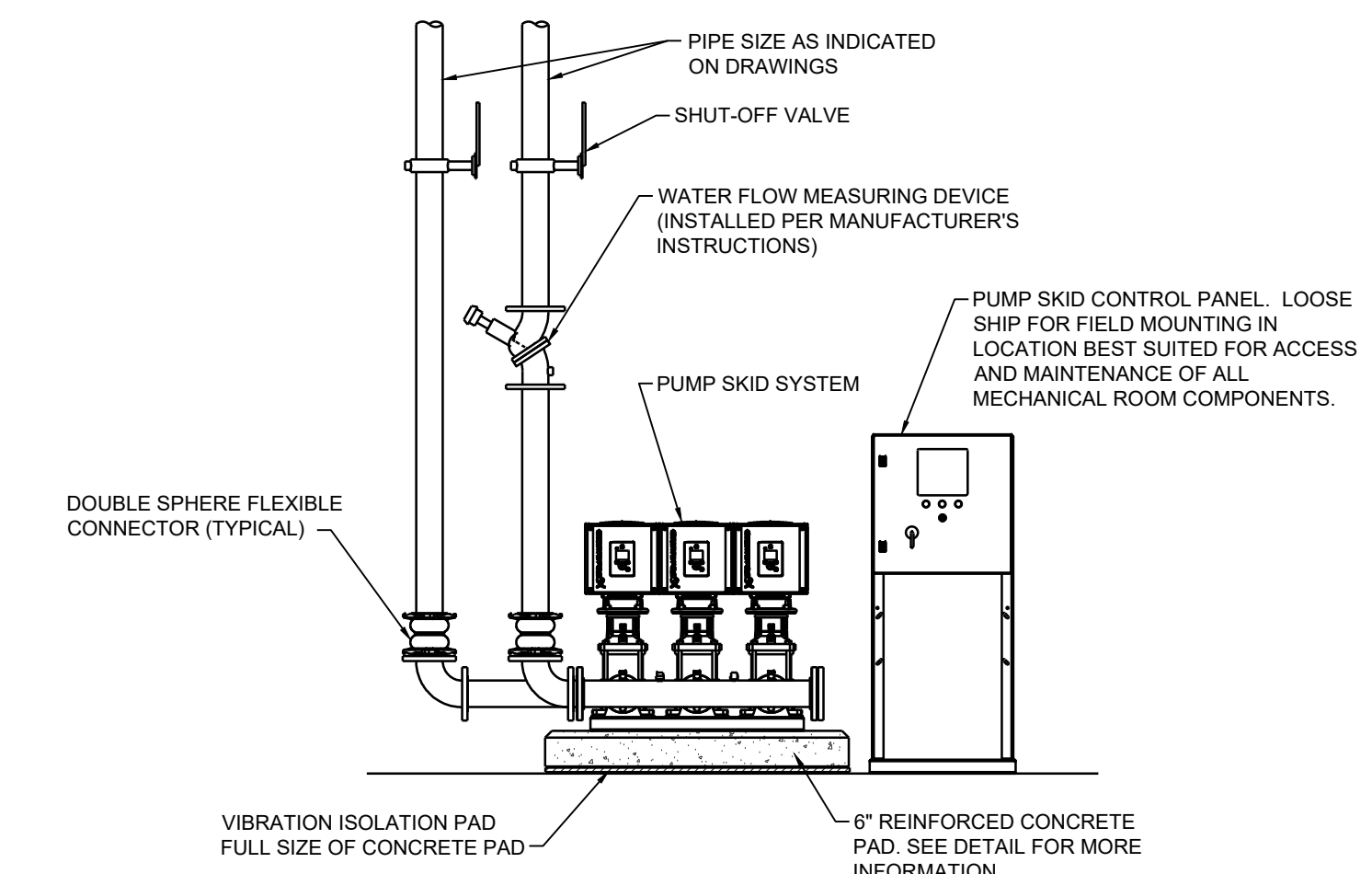


HVAC WATER CIRCULATION AIR SEPARATOR/EXPANSION TANK PIPING DETAIL
N.T.S.

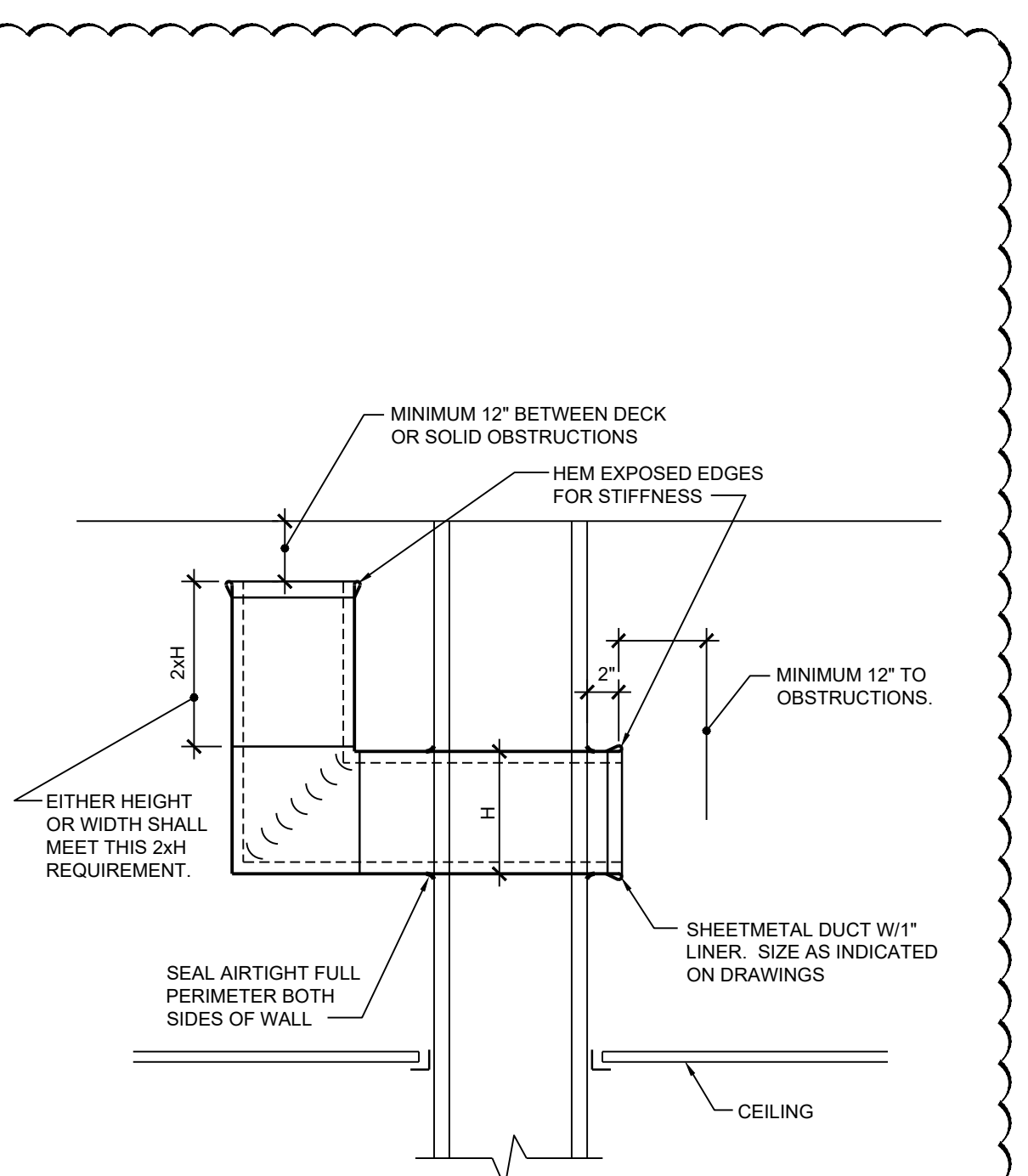
- NOTES:
1. ALL VALVES SHALL BE LINE SIZE. SEE DRAWINGS FOR PIPE SIZE. VERIFY PIPING CONNECTIONS AND PIPING SPECIALTIES BASED ON RECOMMENDATIONS OF APPROVED EQUIPMENT MANUFACTURER'S RECOMMENDATION. PROVIDE ENGINEER WITH MANUFACTURER'S ALTERNATE PIPING (IF APPLICABLE) IN ADVANCE, FOR APPROVAL.



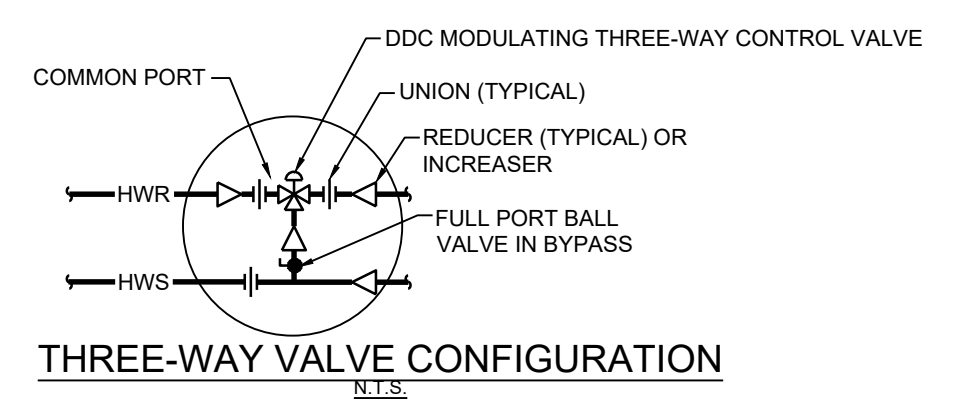
INLINE PUMP PIPING DETAIL
N.T.S.



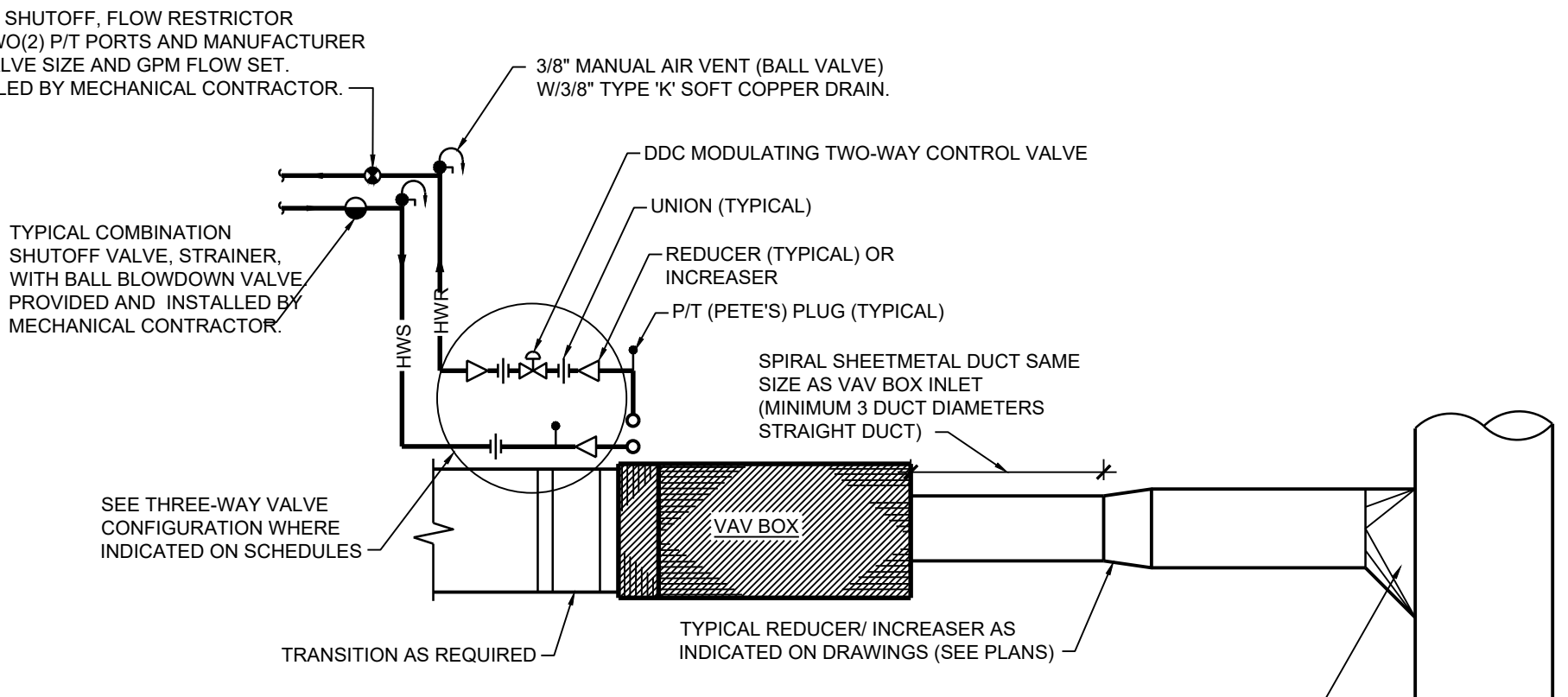
HVAC PUMP SKID SYSTEM DETAIL
N.T.S.



SOUND ATTENUATION R/A TRANSFER DUCT DETAIL
N.T.S.

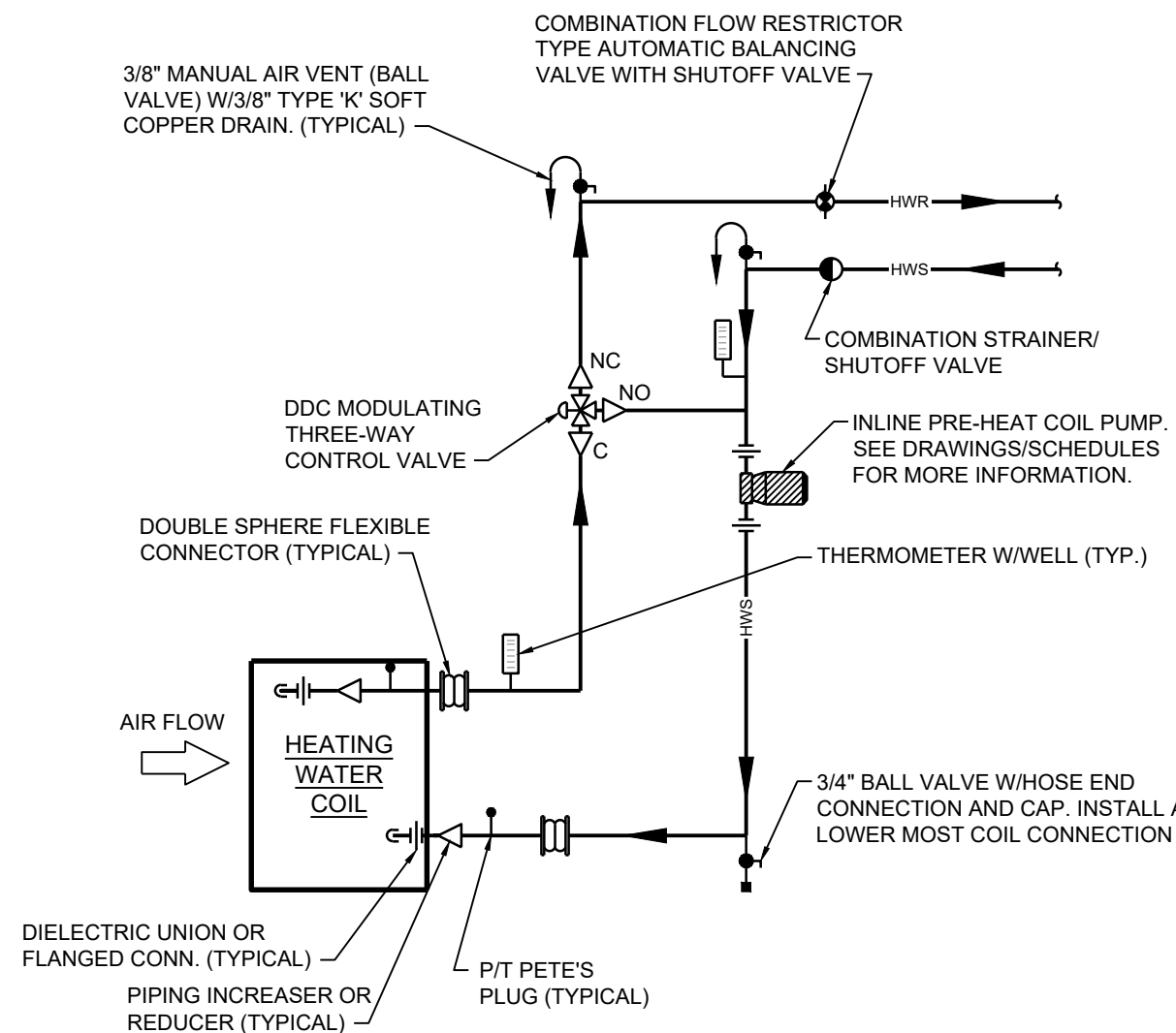


THREE-WAY VALVE CONFIGURATION
N.T.S.



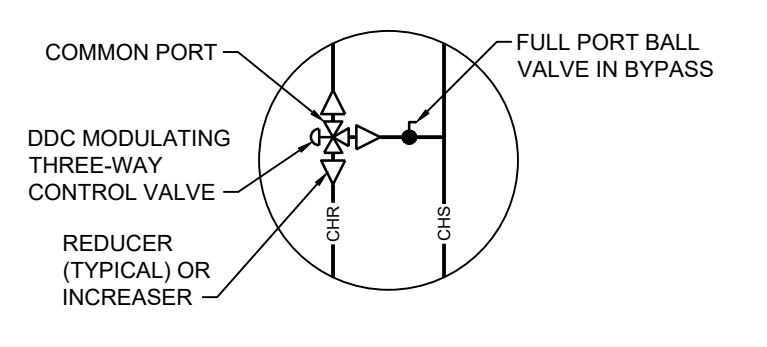
HOT-WATER REHEAT VAV BOX DUCTWORK AND PIPING DETAIL
N.T.S.

- NOTES:
1. ALL CONTRACTOR INSTALLED PIPING AND VALVES TO BE LINE SIZE AS INDICATED ON DRAWINGS.
 2. PROVIDE MANUAL AIR VENT IN HIGHEST POINT OF PIPING AT EQUIPMENT CONNECTIONS.
 3. COORDINATE LOCATION OF ALL SHUTOFF VALVES, STRAINERS AND BALANCE/FLOW RESTRICTOR VALVES FOR ACCESSIBILITY AND MAINTENANCE.
 4. ALL PIPING TO BE LINE SIZE AS INDICATED ON DRAWINGS, EXCEPT PIPING AT COIL CONNECTIONS AND AS RECOMMENDED BY CONTRACTOR'S SUBCONTRACTOR FOR CONTROL VALVE PROPER SIZING.
 5. COMBINATION SHUTOFF/FLOW RESTRICTOR VALVE SHALL BE COORDINATED AND ORDERED WITH FACTORY SETTING AT 1.0 TIMES APPROVED COIL GPM FLOW RATE FOR SPECIFIED CAPACITY.

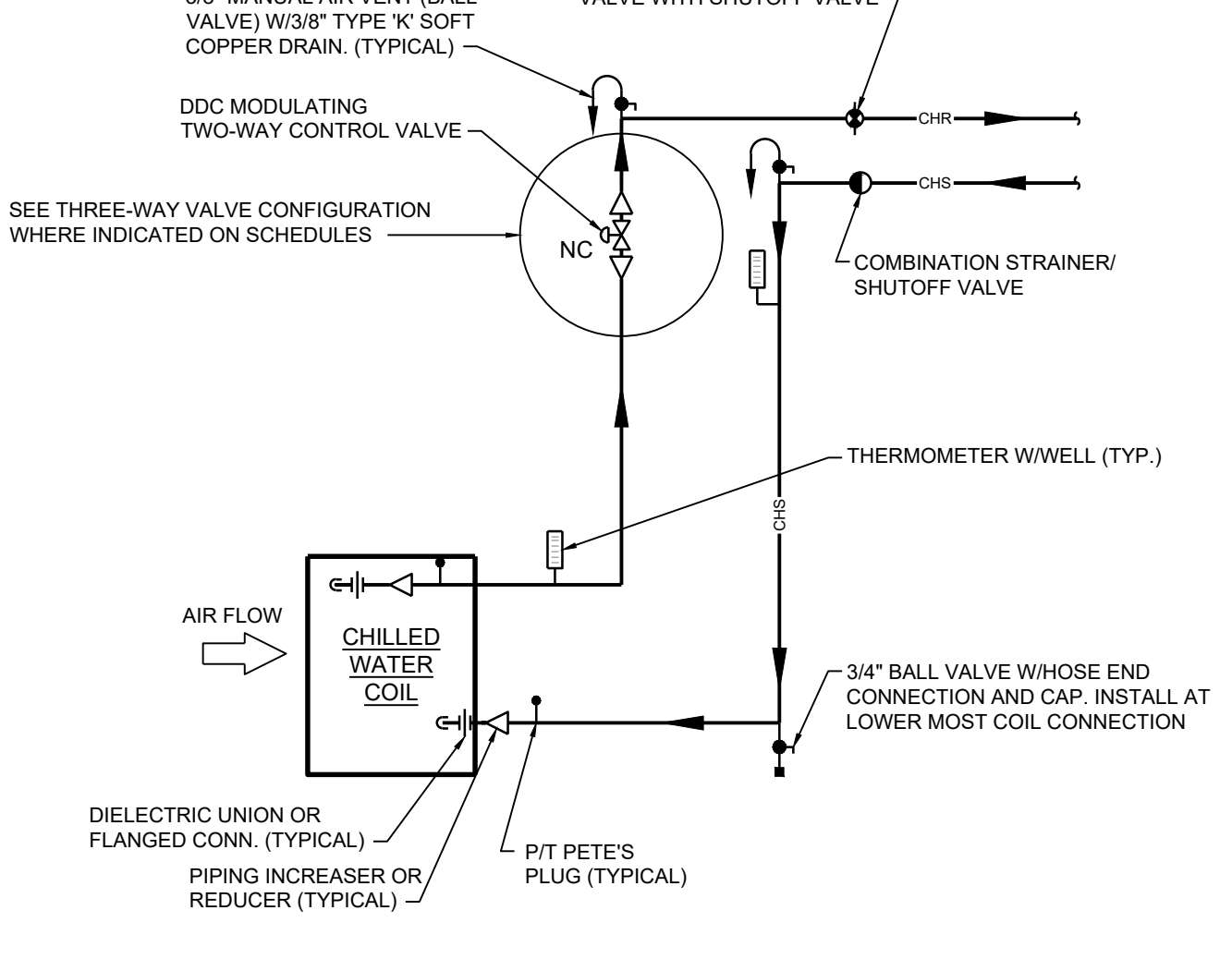


HEATING WATER COIL PIPING DETAIL
N.T.S.

- NOTES:
1. ALL COMBINATION VALVE ASSEMBLIES SHALL INCLUDE HANDLE AND P/T PORT EXTENSIONS, ETC. FOR 1-1/2" INSULATION ON PIPE APPLICATIONS.
 2. COORDINATE WITH CONTROLS SUBCONTRACTOR FOR CONTROL VALVE PROPER SIZING.
 3. ALL PIPING TO BE LINE SIZE AS INDICATED ON DRAWINGS.
 4. PROVIDE MANUAL AIR VENT IN HIGHEST POINT OF PIPING AT EQUIPMENT CONNECTIONS.



THREE-WAY VALVE CONFIGURATION
N.T.S.

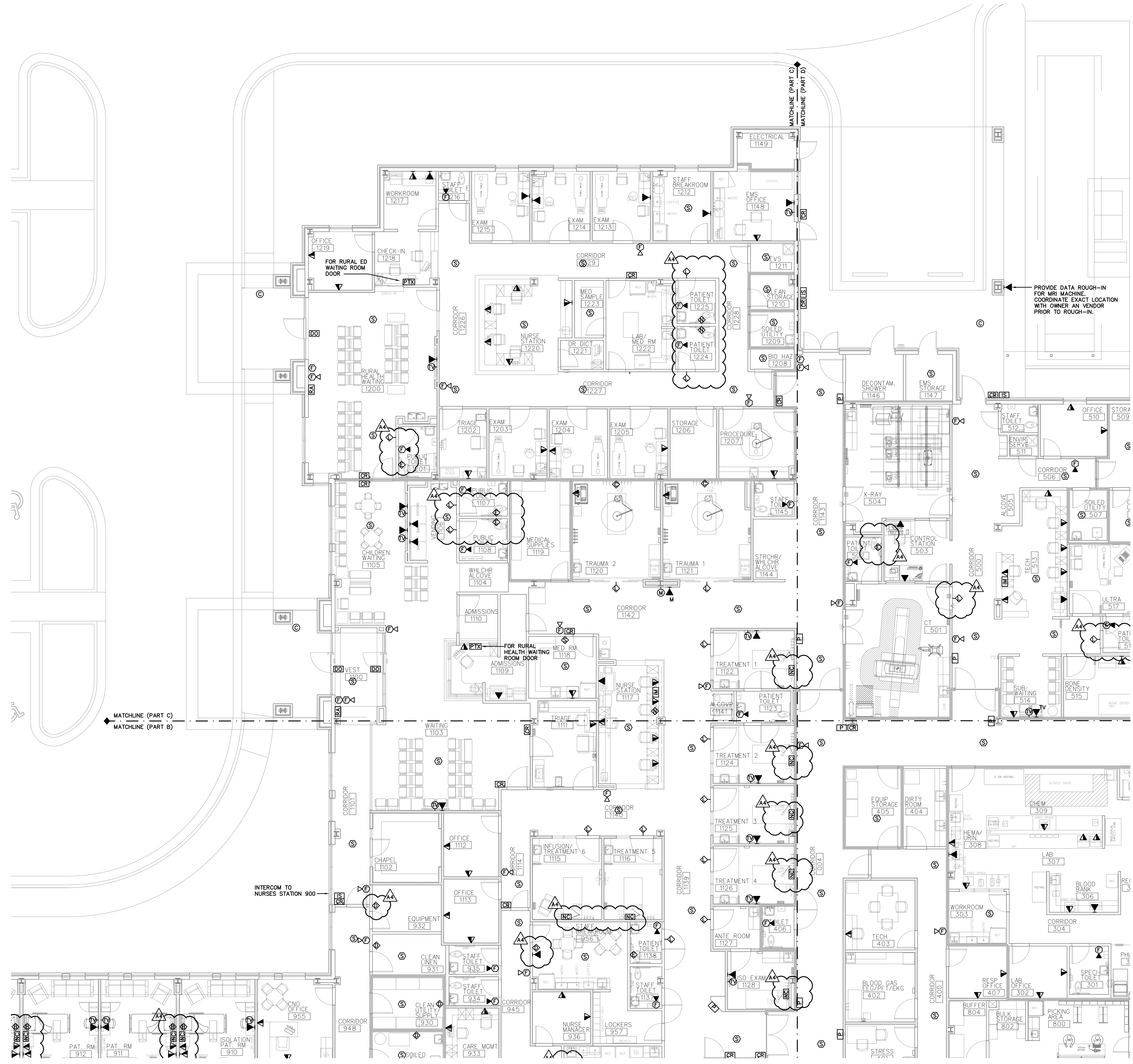


CHILLED WATER COIL PIPING DETAIL
N.T.S.

- NOTES:
1. ALL COMBINATION VALVE ASSEMBLIES SHALL INCLUDE HANDLE AND P/T PORT EXTENSIONS, ETC. FOR 1-1/2" INSULATION ON PIPE APPLICATIONS.
 2. COORDINATE WITH CONTROLS SUBCONTRACTOR FOR CONTROL VALVE PROPER SIZING.
 3. ALL PIPING TO BE LINE SIZE AS INDICATED ON DRAWINGS.
 4. PROVIDE MANUAL AIR VENT IN HIGHEST POINT OF PIPING AT EQUIPMENT CONNECTIONS.
 5. COILS WITH MULTIPLE CONNECTIONS SHALL HAVE SEPARATE SHUTOFF VALVES MANUAL BALANCE VALVES, AND P/T PLUGS FOR EACH COIL PIPING CONNECTION UP STREAM OF SHUTOFF VALVE.
 6. TAB AGENCY TO VERIFY THAT TOTAL MAXIMUM FLOW IS PROPER FOR EACH COIL, AND THAT EACH COIL IS BALANCED FOR SAME PRO-RATA OUTPUT (DISCHARGE AIR TEMPERATURE, ETC.) THROUGHOUT RANGE OF COIL FLOWRATE(S).



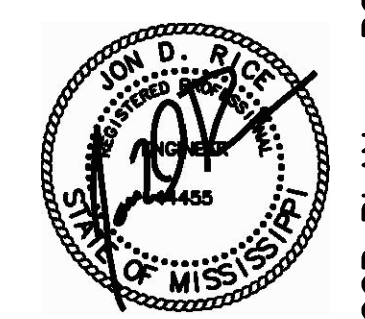
GSK
MECHANICAL
Consulting Engineering
201 Park Court, Suite A1, Ridgeland, MS 39157
P: 601.692.2000 F: 601.603.3111
www.gskmech.com
GSK#: 111-041



PROVIDE DATA ROUGH-IN FOR MRI MACHINE. COORDINATE EXACT LOCATION WITH OWNER AND VENDOR PRIOR TO ROUGH-IN.

PARTIAL FLOOR PLAN - SYSTEMS PART C
 E401C SCALE: 1/8"=1'-0"

Jon D. Rice & Associates, LLC
 Electrical Engineering Consultants
 5403 Castlewoods Court, Suite G, Flowood, MS, 39232
 Tel 601-919-8040 Fax 601-919-8060 PROJ# 19017.00



Sheet Number : - PARTIAL FLOOR PLAN - POWER PART "C"

E401C

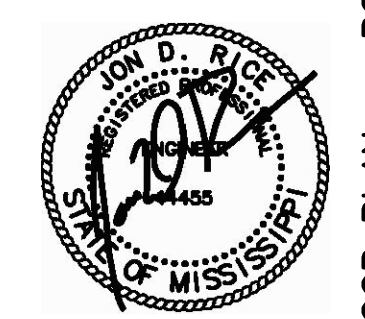
REPLACEMENT FACILITY FOR
TIPPACH COUNTY HOSPITAL
RIPLEY, MISSISSIPPI

Project No: 18015 Revisions: ADDENDUM #4 JANUARY 9, 2020
 Date: 4 DECEMBER 2019
 Drawn: MLL
 Checked: JDR



1 PARTIAL FLOOR PLAN - SYSTEMS PART D
E401D SCALE: 1/8"=1'-0"

Jon D. Rice & Associates, LLC
Electrical Engineering Consultants
5403 Castletwoods Court, Suite G, Flowood, MS, 39232
Tel 601-919-8040 Fax 601-919-8060 PROJ# 19017.00



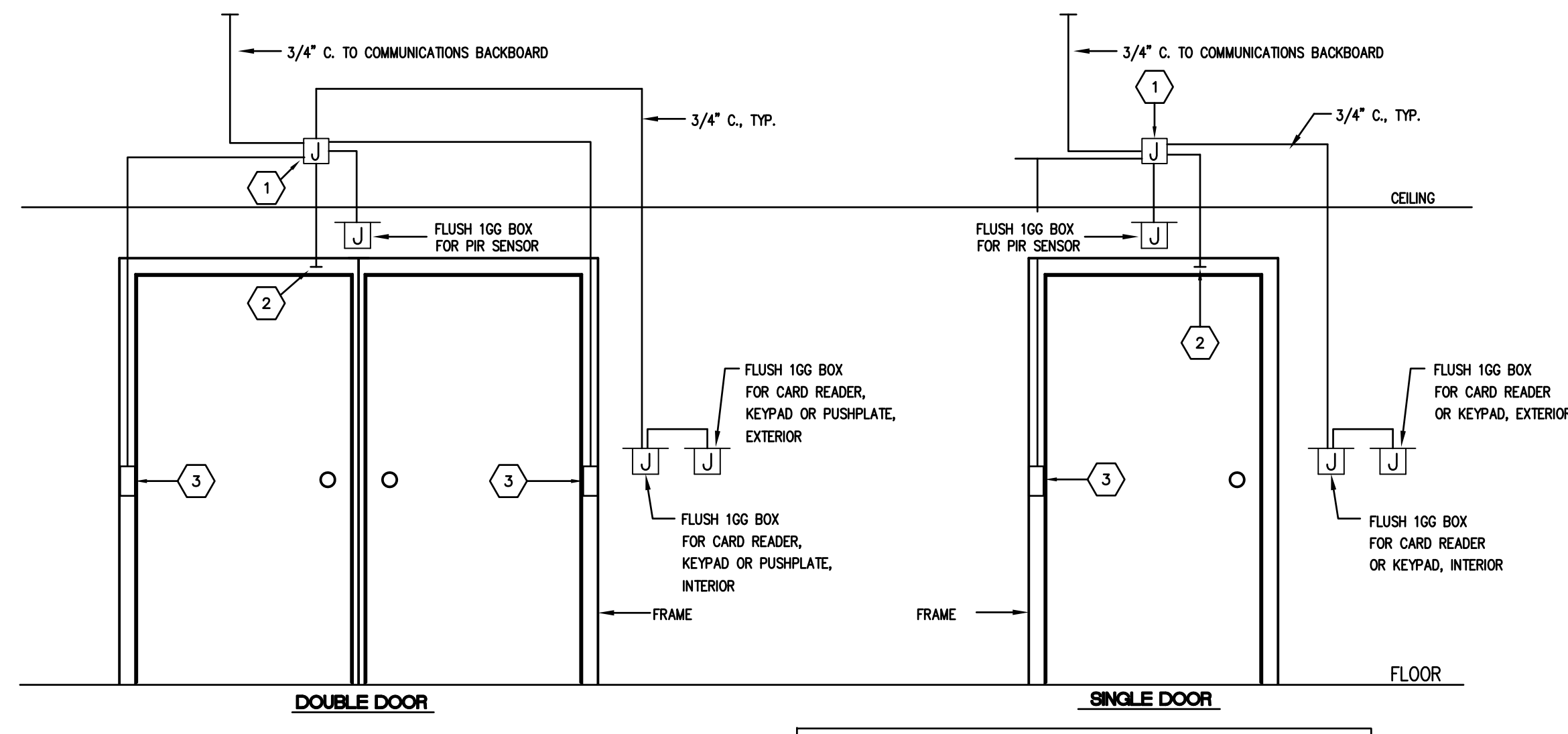
- PARTIAL FLOOR PLAN - POWER PART 1D -

E401D

REPLACEMENT FACILITY FOR
TIPPAH COUNTY HOSPITAL
RIPLEY, MISSISSIPPI

Project No: 18015 Revisions: ADDENDUM #4 JANUARY 9, 2020
Date: 4 DECEMBER 2019
Drawn: MLL
Checked: JDR

Dean and Dean/Associates
architects a professional association
DEAN • GEDDIE • GRANT • OUBRE
P.O. Box 4685 Jackson, MS 39296 4400 Old Canton Rd. Suite 200 Highland Bluff Jackson, MS 39271 (601) 939-7717
www.deandean.com



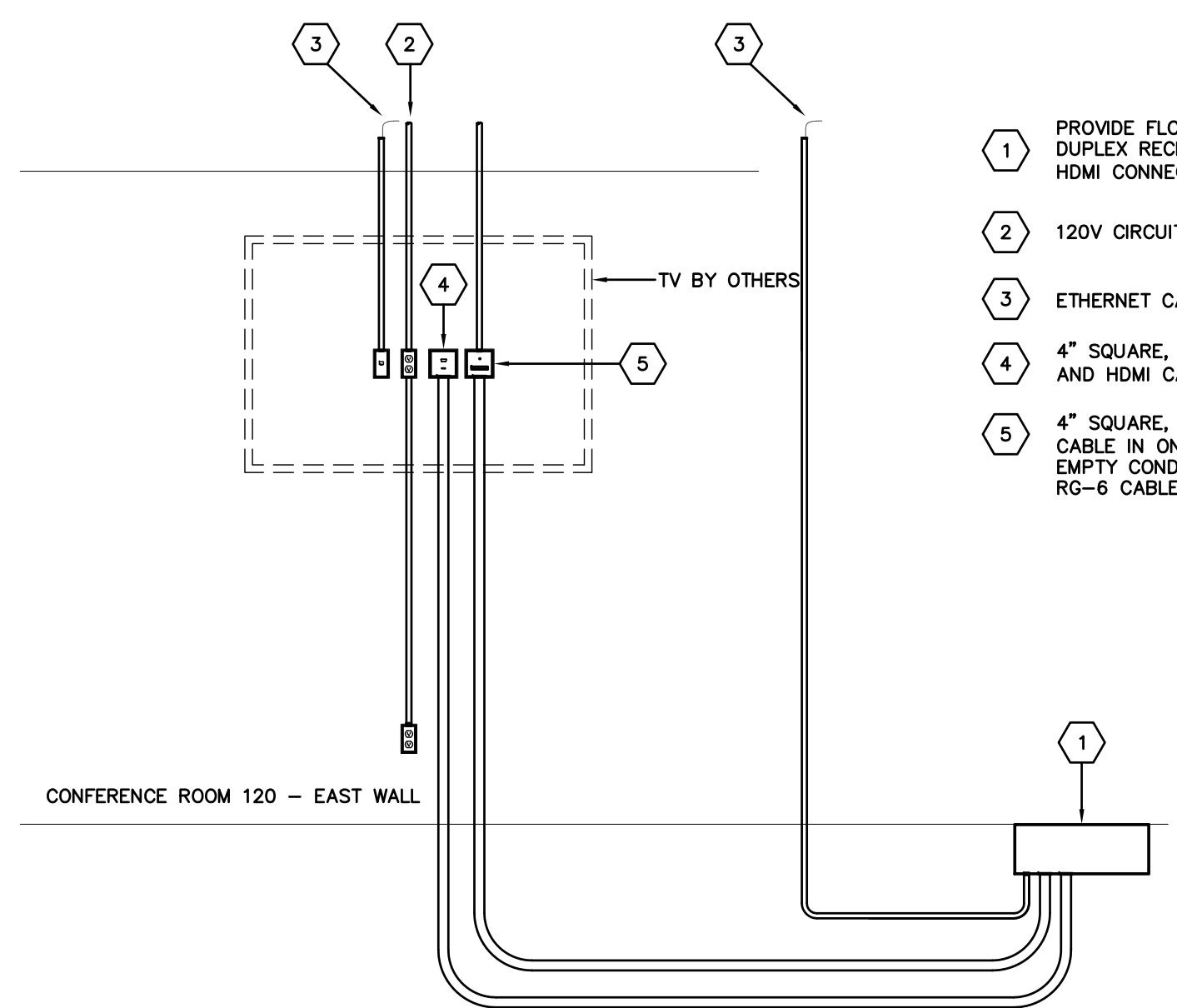
ACCESS CONTROL DETAIL KEYNOTES

- 1 4" SQ. JUNCTION BOX MOUNTED ABOVE CEILING.
- 2 STUB 3/4" CONDUIT INTO DOOR FRAME FOR DOOR CONTACTS.
- 3 ROUTE 3/4" CONDUIT INSIDE DOOR FRAME TO MORTAR BOX FOR CONNECTION TO ELECTRIC POWER TRANSFER SWITCH.

GENERAL NOTES - ACCESS CONTROL SYSTEM

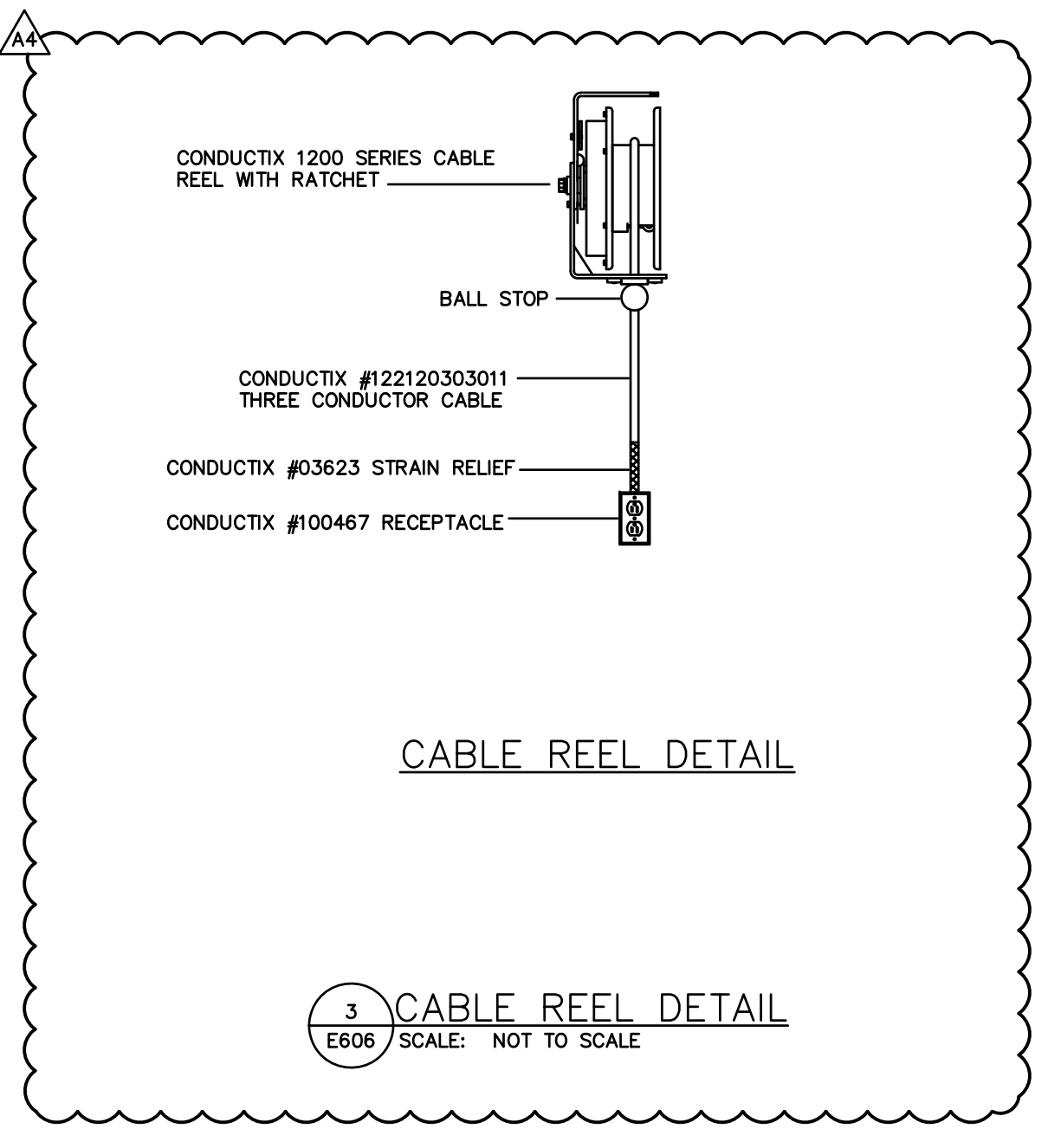
1. DETAIL IS SHOWN FOR ESTIMATING PURPOSES ONLY. COORDINATE OUTLET LOCATIONS WITH OWNER AND ARCHITECT PRIOR TO ROUGH-IN.
 2. ACCESS SYSTEM CARD READERS, KEYPADS, PIR SENSORS, ETC. PROVIDED BY OWNER OR UNDER DOOR HARDWARE SECTION, UNLESS NOTED OTHERWISE.
 3. CABLING SHALL BE PROVIDED BY OWNER OR UNDER DOOR HARDWARE SECTION, UNLESS NOTED OTHERWISE.
- FURNISH AND INSTALL ACCESS CONTROL SYSTEM PROVISIONS UNDER BASE BLD. DELETE IF DEDUCTIVE. ALTERNATE IS TAKEN.

1 ACCESS CONTROL DETAIL
E606 SCALE: NOT TO SCALE



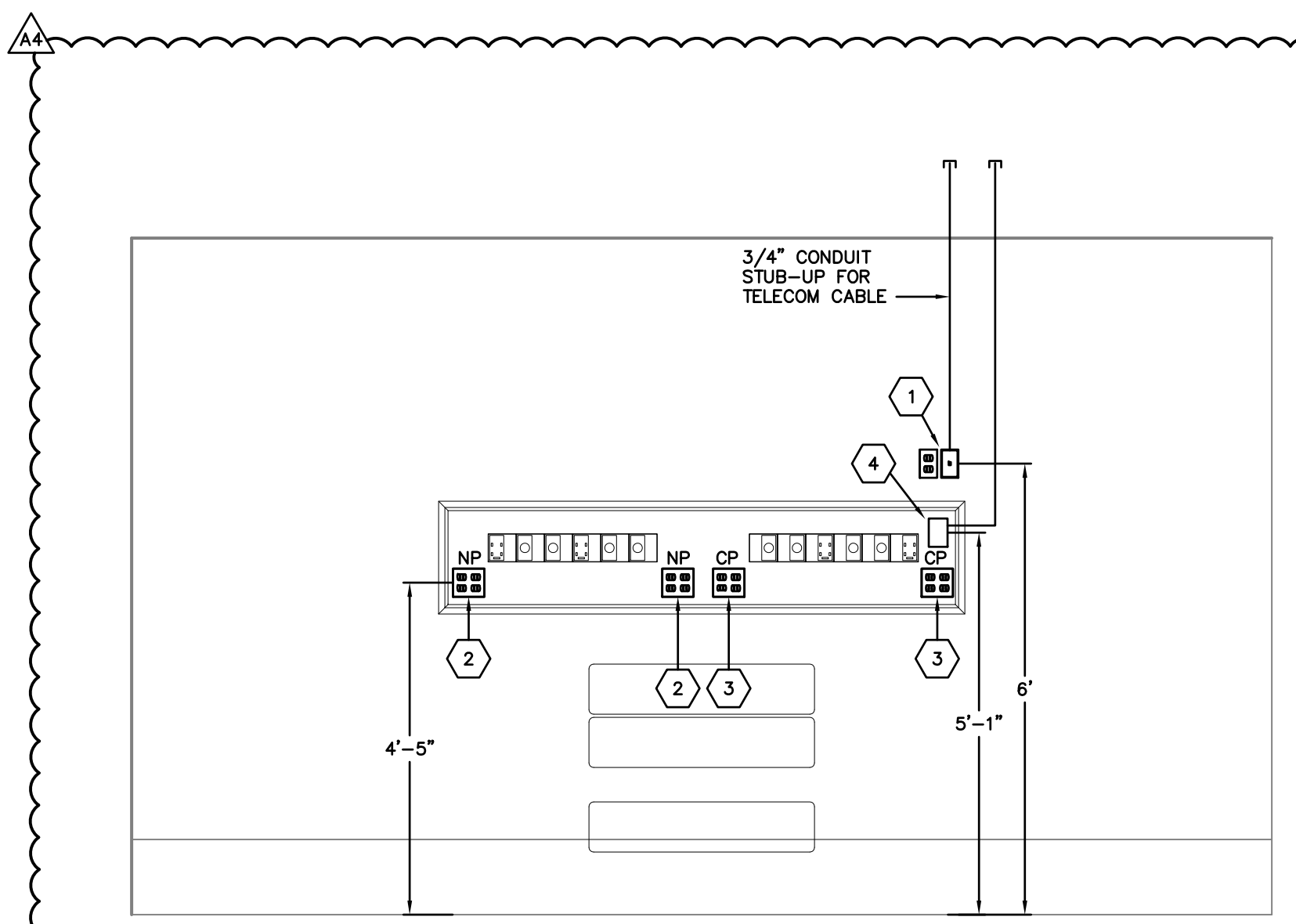
- 1 PROVIDE FLOOR BOX EQUAL TO WIREMOLD RFB6 SERIES WITH TWO DUPLEX RECEPTACLES, ONE RJ45, ONE DVI, ONE VGA, AND ONE HDMI CONNECTION. COVER SHALL HAVE NICKEL (NK) FINISH.
- 2 120V CIRCUIT TO DUPLEX FOR TV AND TO DUPLEX AT 18" AFF.
- 3 ETHERNET CABLE TO OWNER NETWORK BY OTHERS
- 4 4" SQUARE, 3-1/2" DIA JUNCTION BOX WITH VGA AND HDMI CONNECTORS. ROUTE VGA AND HDMI CABLES IN ONE 2" CONDUIT.
- 5 4" SQUARE, 3-1/2" DIA JUNCTION BOX WITH VGA AND HDMI CONNECTORS. ROUTE VGA CABLE IN ONE 2" CONDUIT BETWEEN WALL BOX AND FLOOR BOX. INSTALL 3/4" EMPTY CONDUIT FROM WALL BOX TO ABOVE ACCESSIBLE CEILING FOR RG-6 CABLE. RG-6 CABLE TO BE INSTALLED BY OWNER.

2 A/V CONNECTION DETAIL
E606 SCALE: NOT TO SCALE



CABLE REEL DETAIL

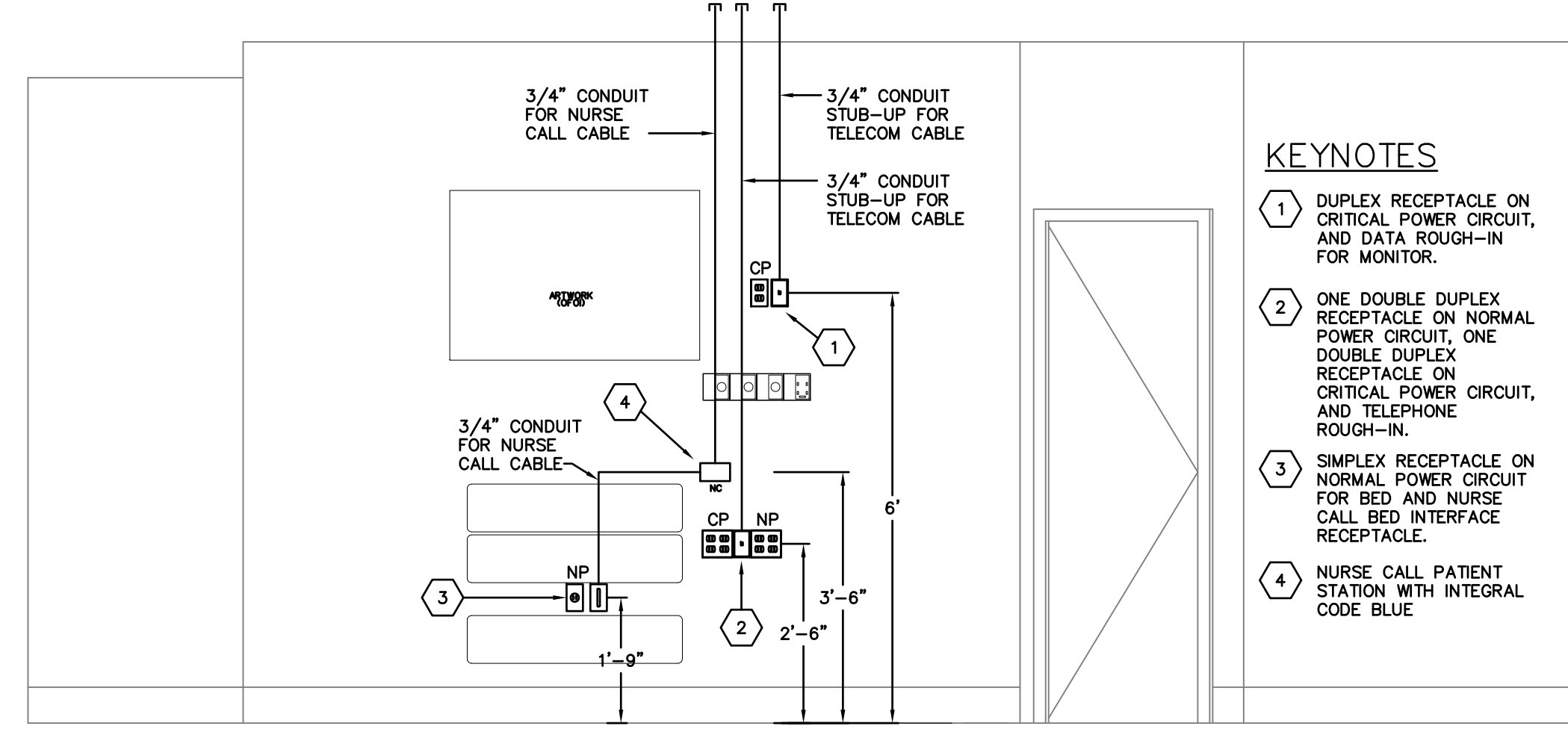
3 CABLE REEL DETAIL
E606 SCALE: NOT TO SCALE



KEYNOTES

- 1 DUPLEX RECEPTACLE ON CRITICAL POWER, AND DATA. ROUGH-IN FOR MONITOR.
- 2 ONE DOUBLE DUPLEX, GFCI RECEPTACLE ON NORMAL POWER CIRCUIT.
- 3 ONE DOUBLE DUPLEX RECEPTACLE ON CRITICAL POWER CIRCUIT, AND TELEPHONE ROUGH-IN.
- 4 NURSE CALL CODE BLUE STATION.

3 TRAUMA ROOM HEADWALL DETAIL
E602 SCALE: 1/2"=1'-0"



KEYNOTES

- 1 DUPLEX RECEPTACLE ON CRITICAL POWER CIRCUIT, AND DATA ROUGH-IN FOR MONITOR.
- 2 ONE DOUBLE DUPLEX RECEPTACLE ON NORMAL POWER CIRCUIT, ONE DOUBLE DUPLEX RECEPTACLE ON CRITICAL POWER CIRCUIT, AND TELEPHONE ROUGH-IN.
- 3 SIMPLEX RECEPTACLE ON NORMAL POWER CIRCUIT FOR BED AND NURSE CALL BED INTERFACE RECEPTACLE.
- 4 NURSE CALL PATENT STATION WITH INTEGRAL CODE BLUE

GENERAL NOTE:

THESE ELEVATIONS ARE FOR PRICING PURPOSES AND THE LOCATION OF THE ELECTRICAL DEVICES ARE SUBJECT TO CHANGE. THE CONTRACTOR IS REQUIRED TO DO A MOCK-UP WALL OF THESE AREAS FOR OWNER REVIEW. CLOSELY COORDINATE HEIGHT AND LOCATION OF ALL DEVICES WITH GENERAL CONTRACTOR AND OWNER PRIOR TO ROUGH-IN OF ACTUAL DEVICES WITHIN THE ROOMS.

4 PATIENT ROOM HEADWALL DETAIL
E602 SCALE: 1/2"=1'-0"

