

December 26, 2019

ADDENDUM NUMBER TWO (2)

Project: Replacement Facility for
Tippah County Hospital
Ripley, MS
PN: 18015

FROM: Dean and Dean/Associates Architects, P.A.
4400 Old Canton Road, Suite 200
Jackson, MS 39211
(601) 939-7717

The following additions, changes, clarifications and/or substitutions to the Project Drawings as indicated, are hereby made a part of the Contract Documents. Acknowledge receipt of this Addendum by inserting its number and date in the Proposal Form where indicated.

Architectural Specifications:

Item #1: Section 002113 – Instructions to Bidders, Clarification of Paragraph 1.05 Bid Security, as follows:

Per Paragraph 1.09C, Bids must be submitted in duplicate with original signatures on each. One Bid Form must be accompanied by an original signed Bid Bond Form. The other Bid Bond may be a photocopy.

Civil:

SEE ATTACHED CIVIL ITEMS PROVIDED BY McMASTERS & ASSOCIATES, INC Dated 12-26-19.

Electrical:

SEE ATTACHED ELECTRICAL ITEMS PROVIDED BY JON D. RICE & ASSOCIATES, LLC
Dated 12-26-19.

END OF ADDENDUM NUMBER TWO (2)

Dean and Dean/Associates
architects p.a.


Kenneth A. Oubre, AIA, Vice President



PLEASE ATTACH THIS ADDENDUM TO THE INSIDE FRONT COVER OF EACH SET OF SPECIFICATIONS.



December 26, 2019

ADDENDUM NO. TWO (2) – CIVIL ENGINEERING ITEMS

Replacement Facility for Tippah County Hospital
Ripley, Mississippi
McMaster & Associates, Inc. – M-2696

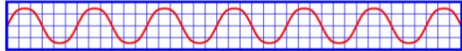
The following changes and clarifications are hereby made a part of and take precedence over conflicting sections of the Drawings and Specifications.

CIVIL GENERAL INFORMATION AND CLARIFICATIONS:

Item #1 - Add the four (4) enclosed construction drawings for the sheet pile retaining wall Sheets C7.0 thru C 7.3 provided by Precision Engineering Corporation dated 26 Dec 2019.

END OF CIVIL ITEMS FOR ADDENDUM NO. TWO (2)

Jon D. Rice & Associates, LLC



Electrical Engineering Consultants
5403 Castlewoods Court • Suite G • Flowood, MS • 39232
Tel: 601-919-8040 Fax: 601-919-8060

December 26, 2019

Dean & Dean Architects
Attn: Kenny Oubre/Brad Heath
P.O. Box 4685
Jackson, MS 39216

Re: Replacement Facility for Tippah County Hospital – Addendum #2 (Electrical)

Electrical addendum items are as follows:

Sheet E301A

1. Floor box catalog number and electrical requirements have been added to this sheet.

Sheet E606

1. This sheet has been added for additional Electrical Details.
 - a. An access control rough-in detail has been added.
 - b. An A/V installation detail has been added.

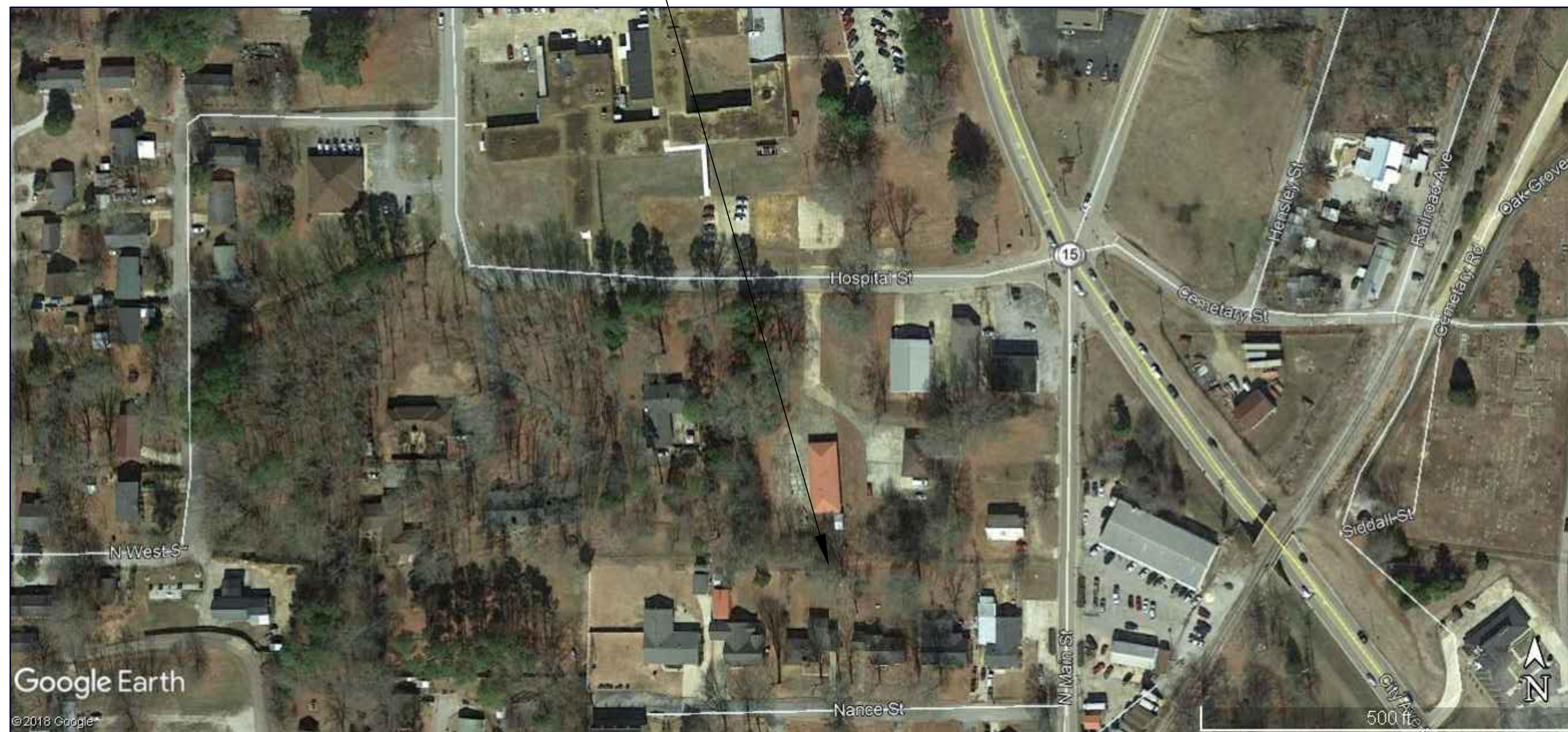
If you have any questions regarding this addendum, please call.

Thank you,

Michael Layman

SHEET PILE RETAINING WALL PLANS FOR REPLACEMENT FACILITY FOR TIPPAH COUNTY HOSPITAL RIPLEY, MISSISSIPPI

PROPOSED
PROJECT



VICINITY MAP
N.T.S.

CLIENT:
MCMASTER & ASSOCIATES, INC.

OWNER
TIPPAH COUNTY HOSPITAL

CONSULTING ENGINEER:
PRECISION ENGINEERING CORPORATION
276 COUNTY ROAD 101
OXFORD, MS 38655
(662) 234-8539

DECEMBER 20, 2019
(CONSTRUCTION SET)
PEC JOB NUMBER 19123

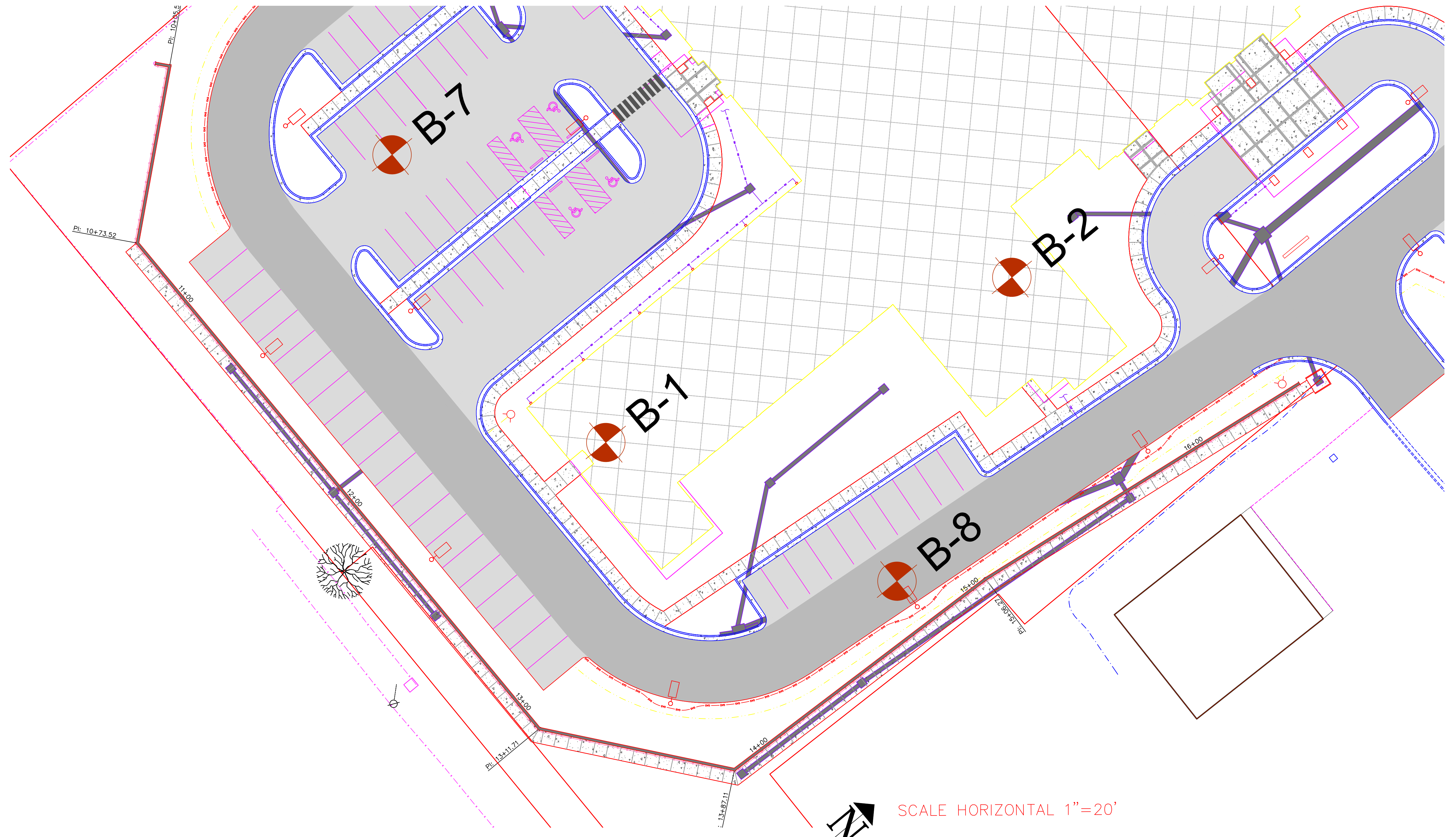
TABLE OF CONTENTS:

C-7.0	COVER
C-7.1	WALL PLAN VIEW - PIPE DETAILS
C-7.2	WALL PROFILE VIEW
C-7.3	BORING LOGS



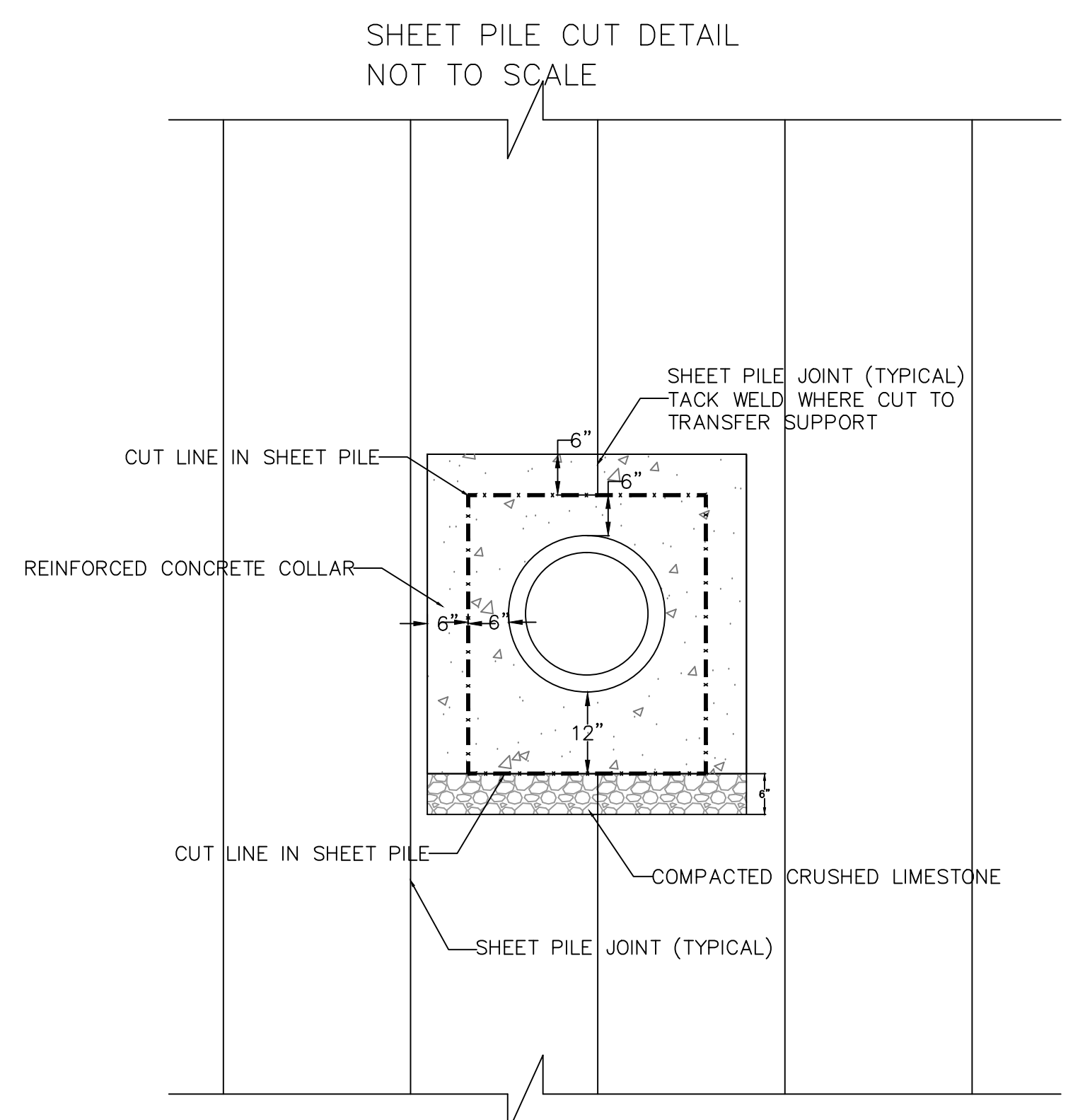
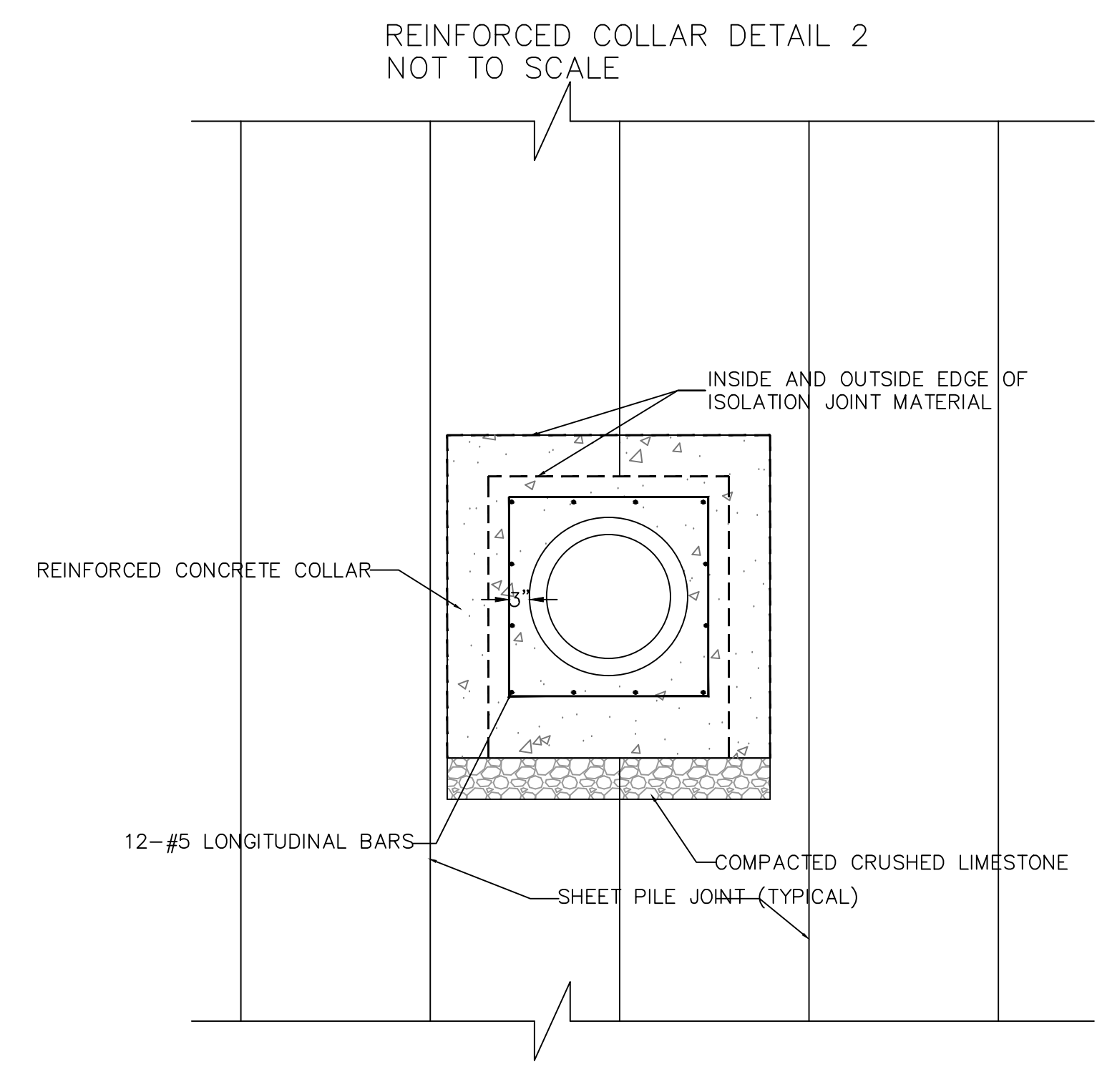
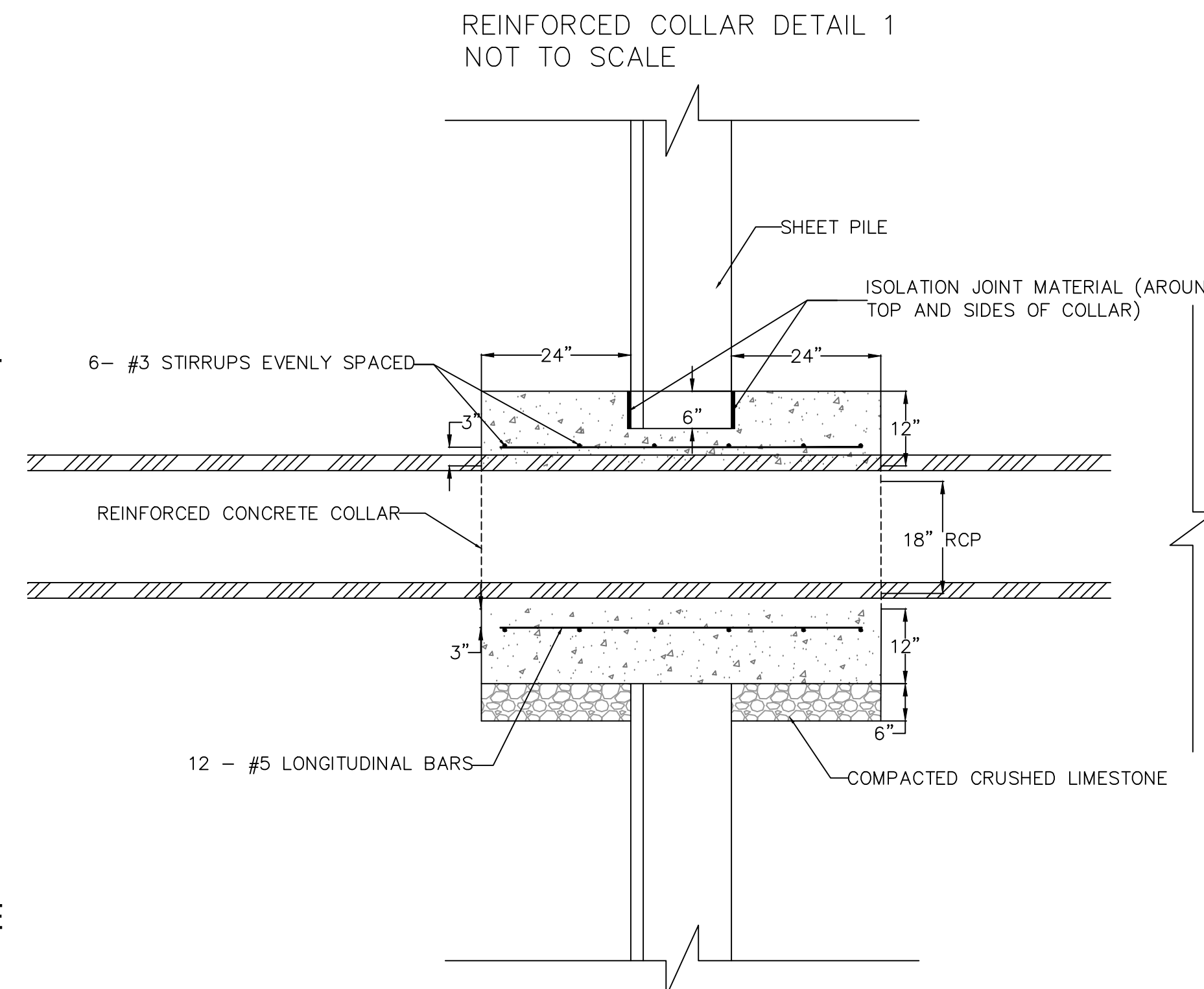
- SPECIFICATIONS**
- STEEL SHEET PILES SHALL BE NEW STEEL. STEEL SHEET PILING SHALL MEET THE REQUIREMENTS OF ASTM A572, (GRADE 60). SHEET PILES SHALL BE COLD FORMED SKYLINE STEEL TYPE NZ 21, OR APPROVED EQUIVALENT. PROPERTIES OF ALTERNATIVE SHEET PILE TYPE PROPOSED FOR USE BY CONTRACTOR SHALL BE INCLUDED WITH THE BID FOR PEC TO REVIEW.
 - STEEL CORNERS, TEES, WYES, AND CROSSES SHALL MEET THE REQUIREMENTS OF ASTM A328 OR ASTM A690.
 - THE INTERLOCKS BETWEEN STEEL SHEET PILE SECTIONS SHALL BE CONFIGURED SUCH THAT THE AVERAGE WIDTH OF THE ANNULAR SPACE BETWEEN ALL CONTACT POINTS OF THE INTERLOCKS SHALL BE A MAXIMUM OF ONE-EIGHTH (1/8) INCH, AS DETERMINED BY ENGINEER.
 - STEEL SHEET PILES AND INTERLOCKS SHALL NOT HAVE EXCESSIVE KINKS, CAMBER OR TWIST THAT WOULD PREVENT THE PILE FROM REASONABLY FREE SLIDING TO GRADE.
 - ALL FABRICATED CONNECTIONS SHALL BE MADE WITH THE USE OF ANGLES OR BENT PLATES, AS NECESSARY, AND SHALL BE ADEQUATELY WELDED OR CONNECTED WITH HIGH STRENGTH BOLTS AS ACCEPTED BY ENGINEER.
 - ALIGNMENT:
 - SHEET PILE SHALL BE DRIVEN TO FORM A RELATIVELY STRAIGHT LINE BETWEEN THE TERMINI POINTS SHOWN ON THE DRAWINGS.
 - HORIZONTAL DEVIATION OF ANY POINT FROM A STRAIGHT LINE CONNECTING THE TWO ENDS OF THE WALL SECTION SHALL BE A MAXIMUM OF SIX (6) INCHES.
 - PLUMBNESS: EACH INDIVIDUAL SHEET PILE SECTION SHALL BE DRIVEN VERTICAL, WITHIN A HORIZONTAL TOLERANCE OF TWO PERCENT (2%) OF ANY VERTICAL LENGTH MEASURED ALONG THE PILE.
 - TOPS OF SHEET PILE SECTIONS SHALL BE WITHIN A TOLERANCE OF ONE (1) INCH FROM PLAN ELEVATIONS. TOPS SHALL BE GROUND SMOOTH AFTER CUTTING TO FINISHED ELEVATION.
 - CONCRETE AT PENETRATIONS SHALL HAVE A MINIMUM COMPRESSIVE STRENGTH OF 4000 psi AT 28 DAYS.
 - REINFORCING STEEL SHALL BE GRADE 60 ASTM A615 MINIMUM CLEARANCE FOR REINFORCING STEEL SHALL BE 3 INCHES FROM EXTERIOR SURFACE OF CONCRETE UNLESS OTHERWISE NOTED.
 - SHEET PILE/CONCRETE BOND BREAKER SHALL PREVENT ADHESION BETWEEN SHEET PILE AND CONCRETE PIPE ENCASEMENT. CONTRACTOR SHALL PROVIDE TO THE ENGINEER INFORMATION ON BOND BREAKER PRIOR TO ITS USE.

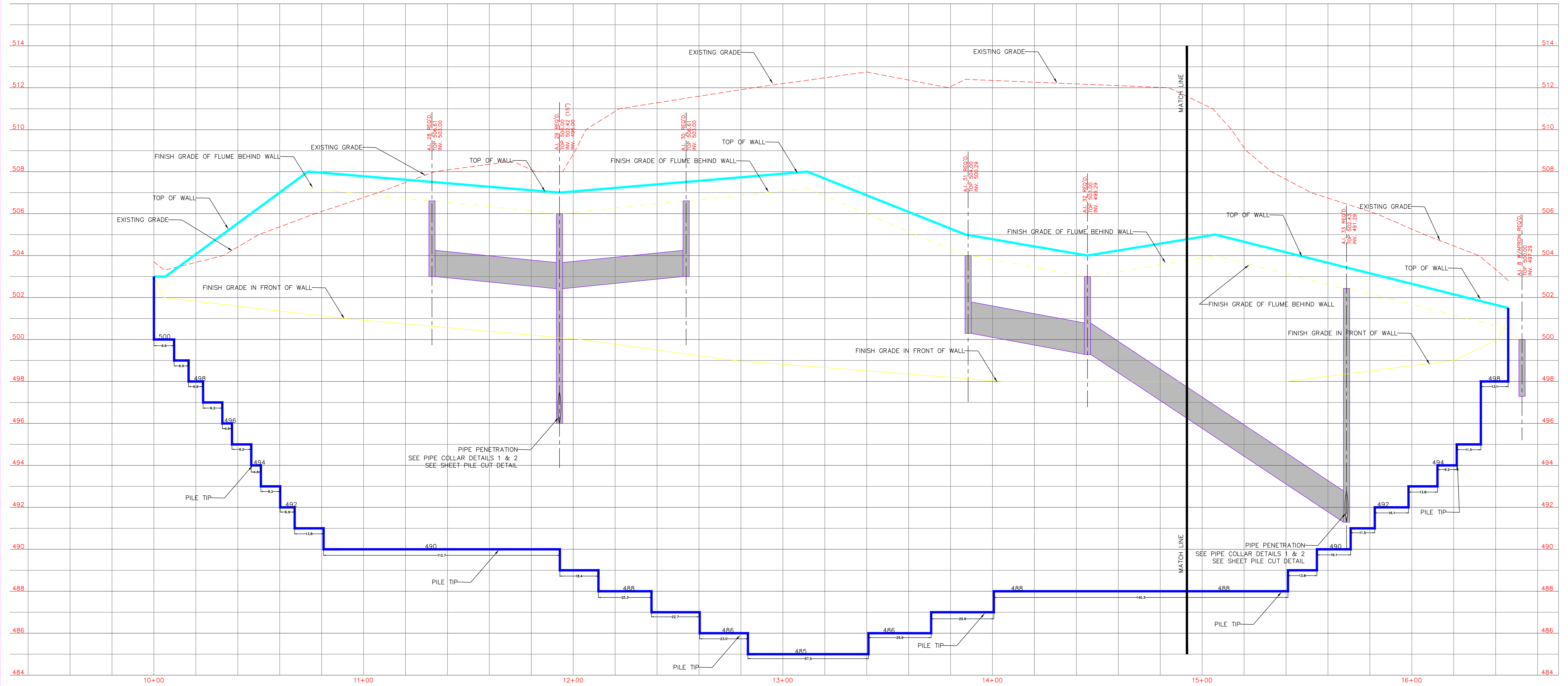
- CONSTRUCTION SEQUENCE**
- CUT SITE TO PROPOSED TOP OF WALL ELEVATION.
 - DRIVE SHEET PILE TO PROPOSED TIP ELEVATION SHOWN.
 - INSTALL STORM SEWER SYSTEM BEHIND WALL AND THROUGH WALL. (ADDITIONAL PILES MAY BE REQUIRED AT AI-28 AND AI -31 NOT PART OF THIS DESIGN).
 - COMPACTION AROUND STORM INLETS MUST BE IN MAXIMUM 8" LIFTS TO 95% ASTM D698.
 - REMOVE SOIL FROM FACE OF WALL. ONCE SOIL HAS BEEN MOVED FROM WALL, HEAVY EQUIPMENT IS NOT ALLOWED BEHIND WALL.



SCALE HORIZONTAL 1"=20'

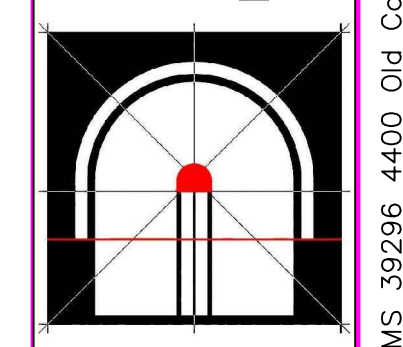
SOURCE: BASE DRAWING FROM MCMASTER AND ASSOCIATES, INC.

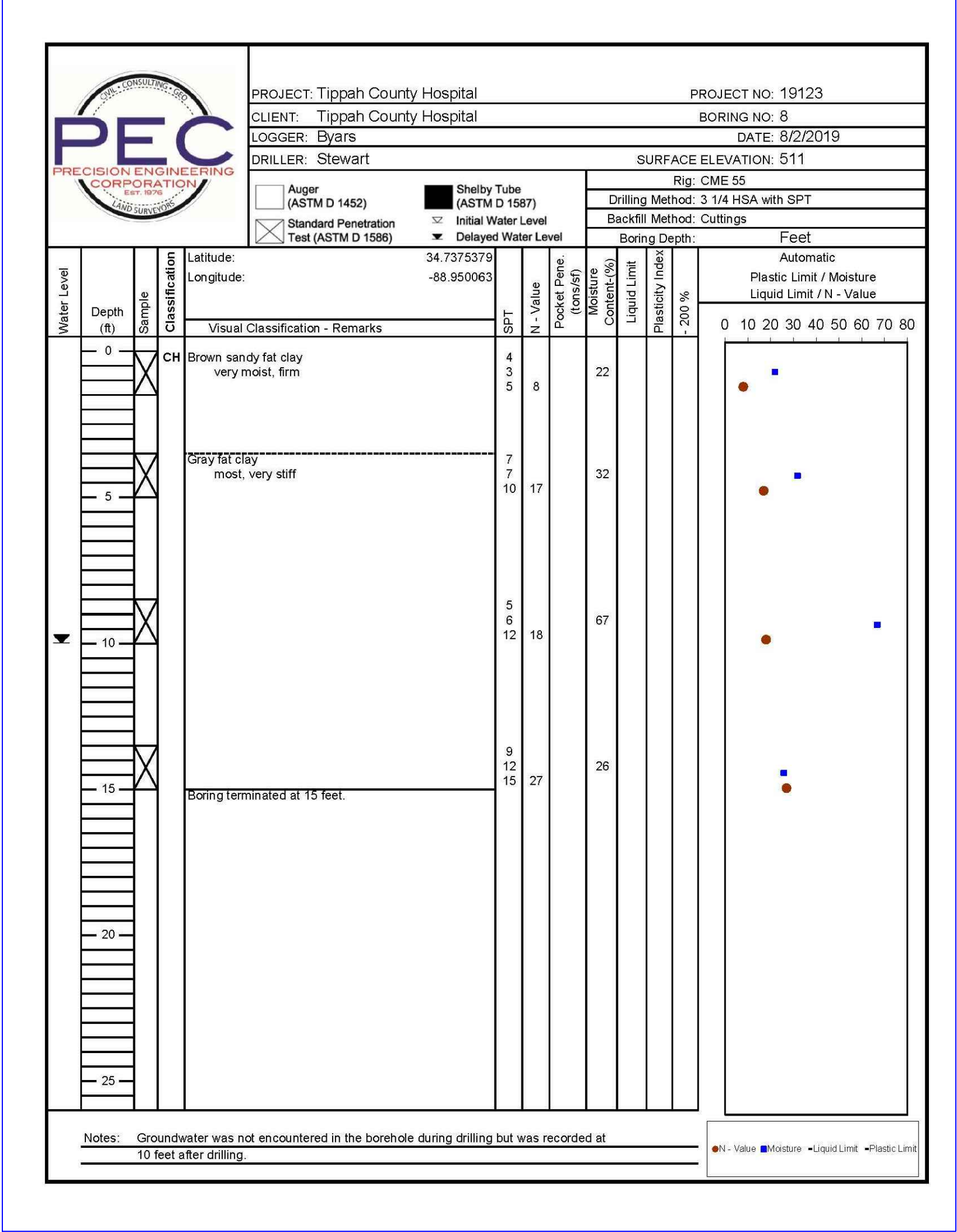
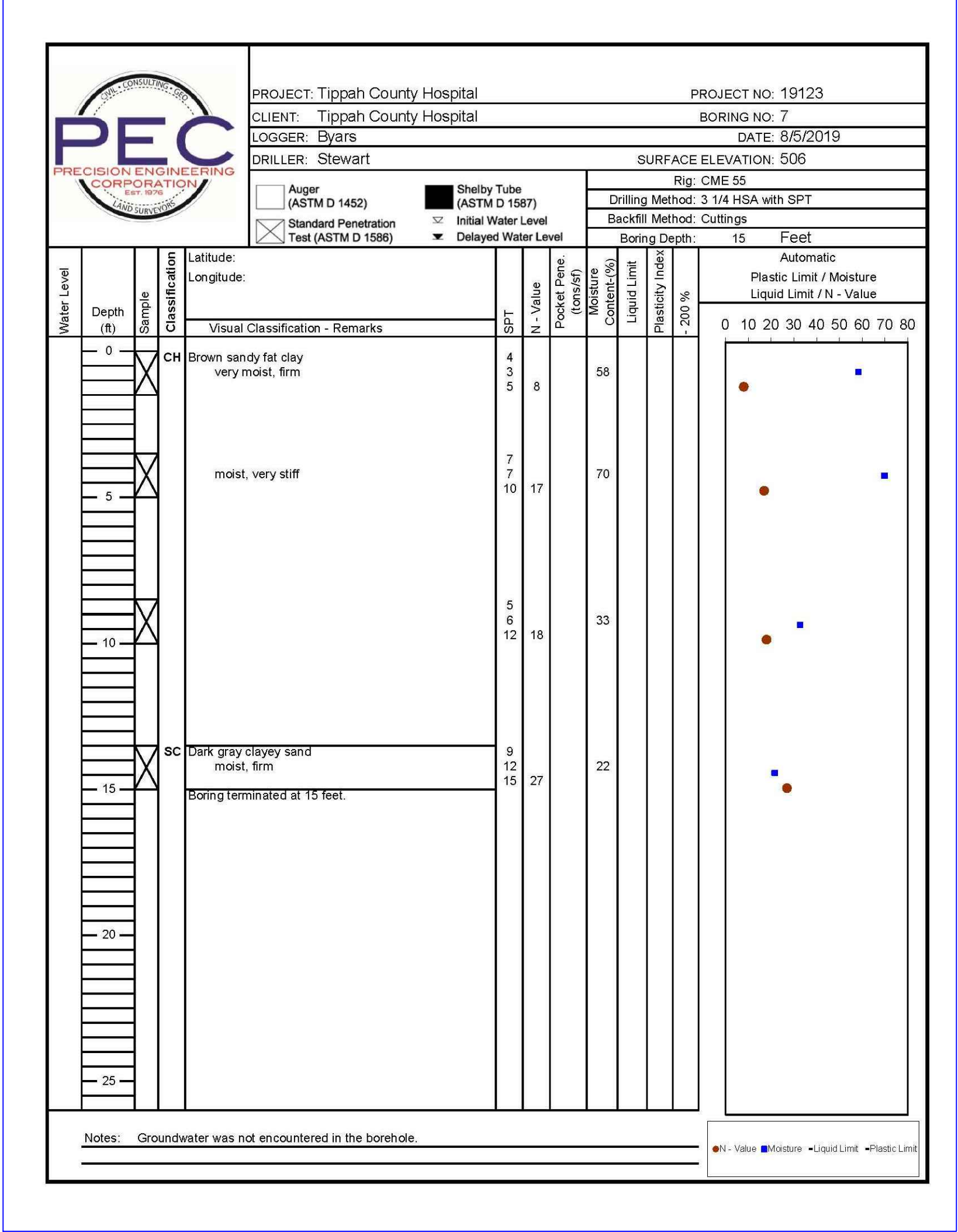
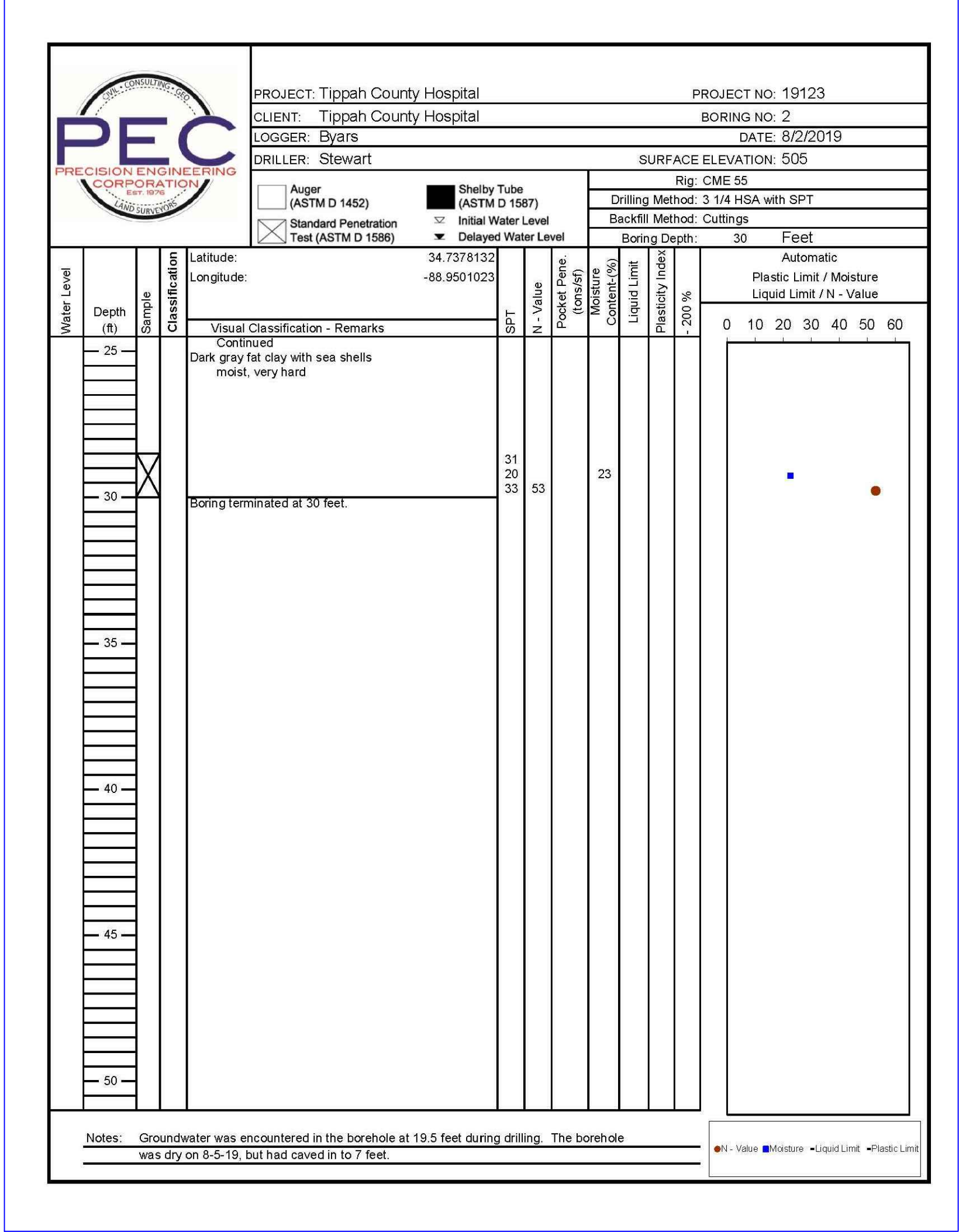
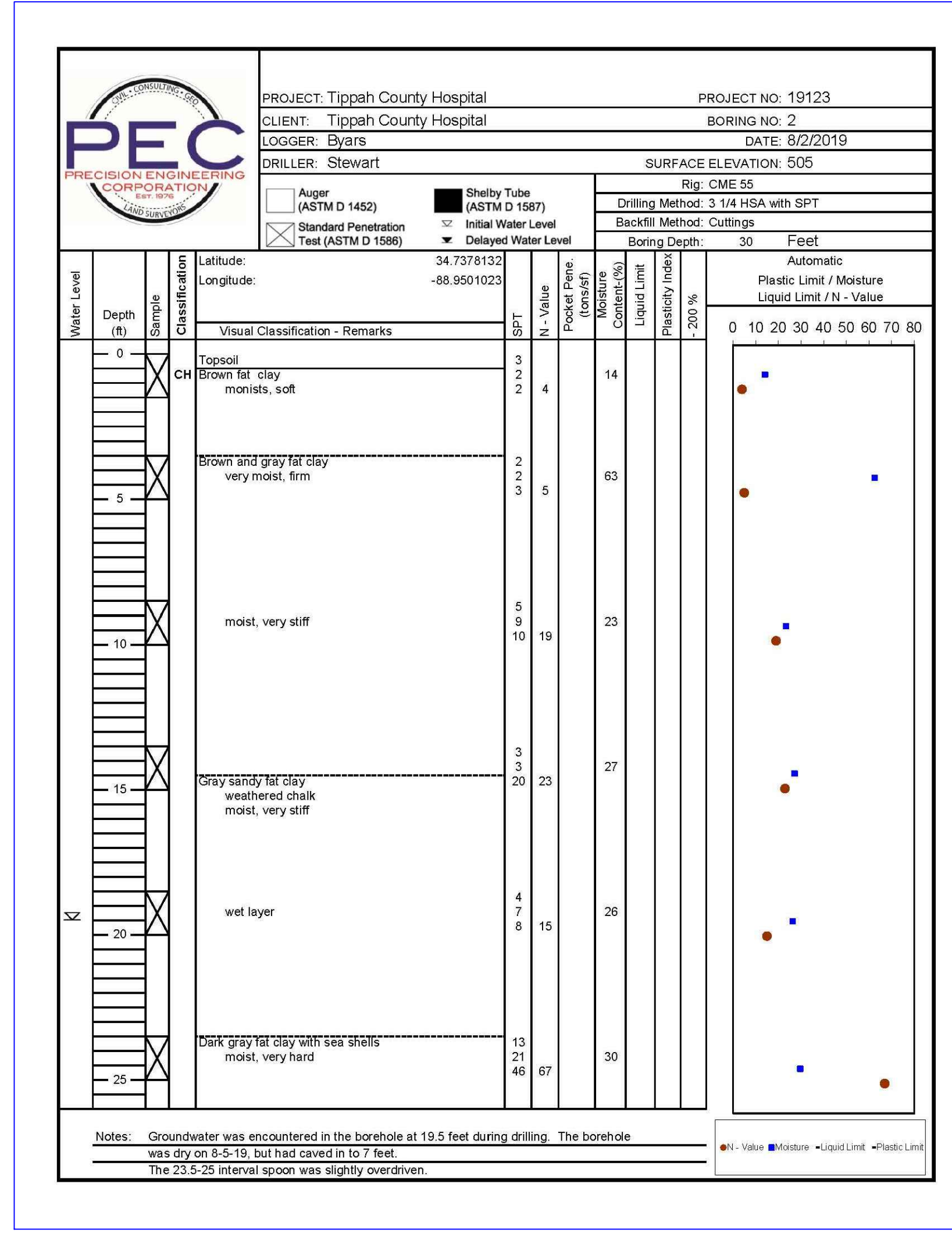
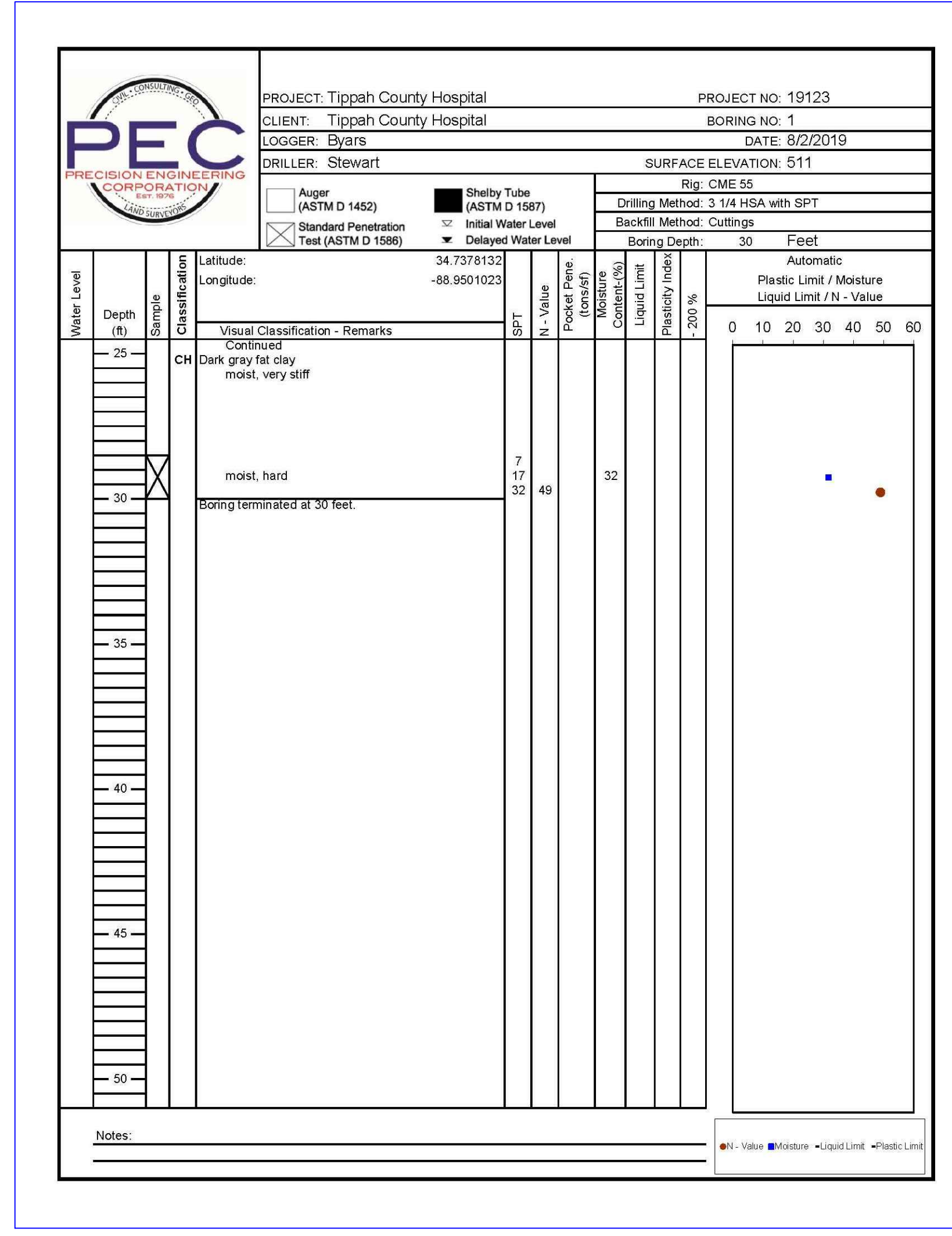
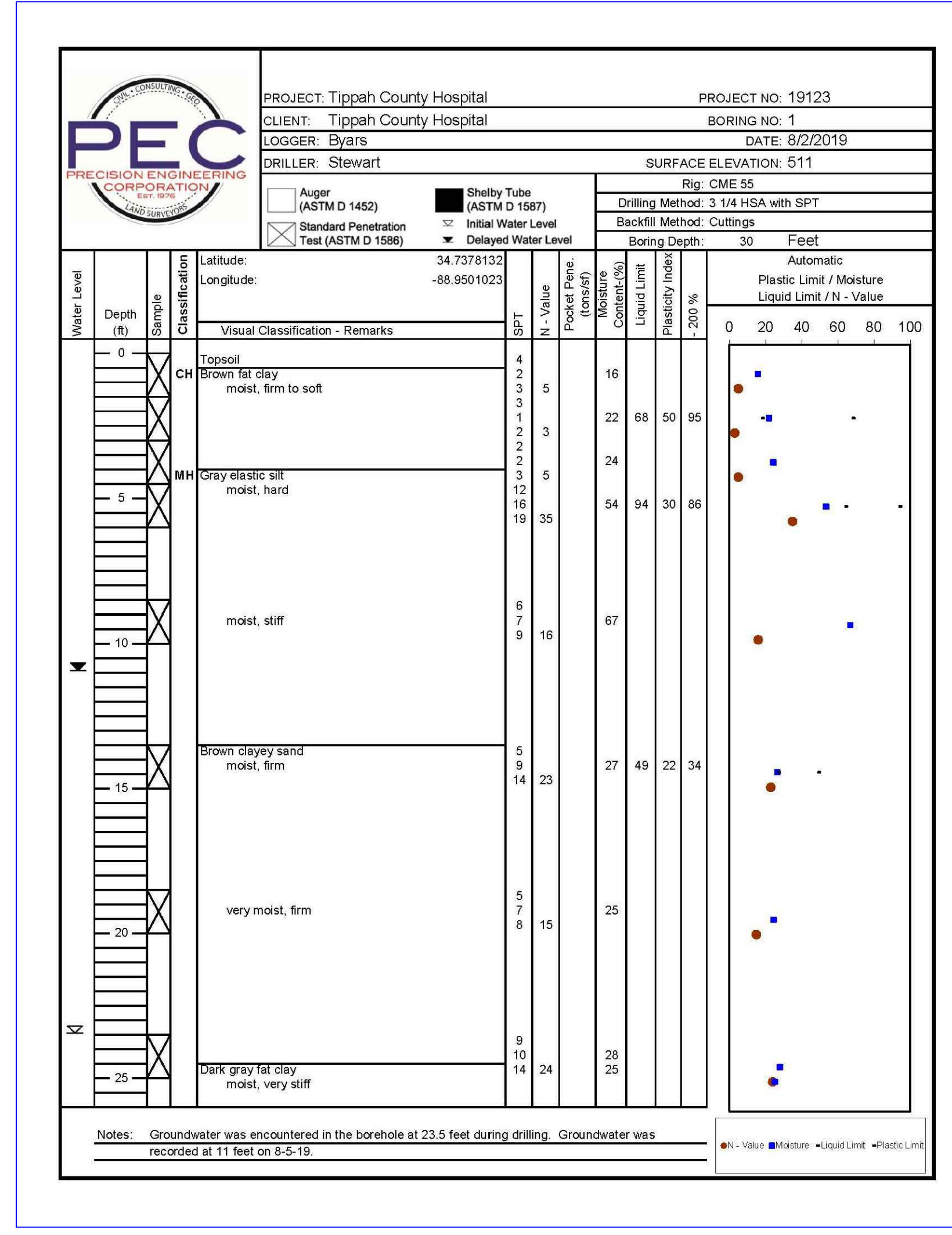


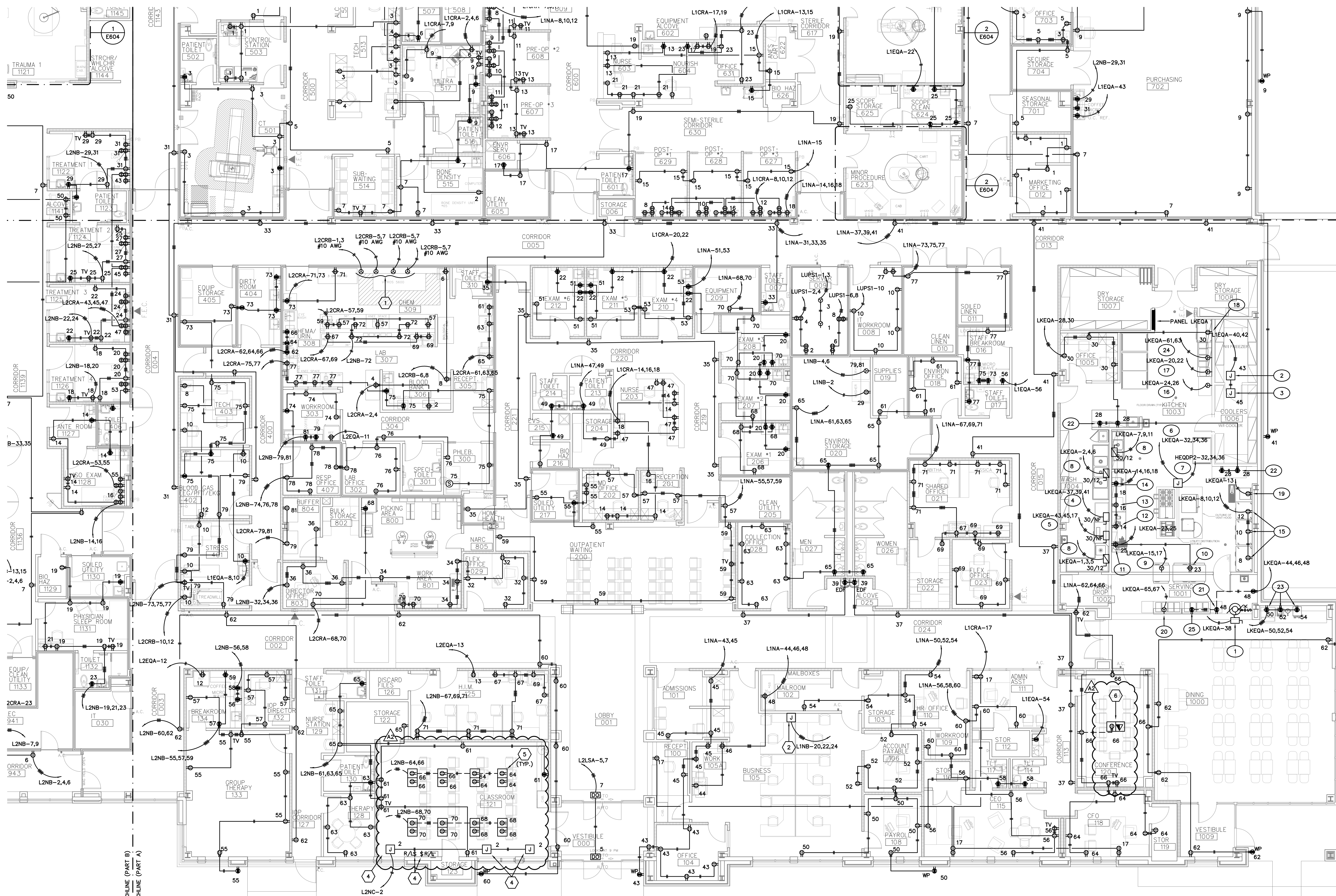


SCALE HORIZONTAL 1"=20'
SCALE VERTICAL 1"=1'

SOURCE: BASE DRAWING FROM MCMASTER AND ASSOCIATES, INC.







- KEYNOTES**
- PROVIDE TWO NEMA L6-30R RECEPTACLES, AND TWO NEMA L6-20R RECEPTACLES ALONG WEST WALL FOR VITROS EQUIPMENT. ALL FOUR RECEPTACLES SHALL HAVE BE ISOLATED GROUND RECEPTACLES. CLOSELY COORDINATE LOCATION OF RECEPTACLES WITH OWNER AND GENERAL CONTRACTOR PRIOR TO ROUGH-IN.
 - PROVIDE CONNECTION TO MODULAR FURNITURE. COORDINATE WIRING CONFIGURATION WITH FURNITURE MANUFACTURER REQUIREMENTS.
 - PROVIDE CONNECTION TO MOTOR OPERATED SHADES. PROVIDE RAISE/LOWER AND COORDINATE EXACT LOCATION OF SWITCH WITH THE OWNER AND GENERAL CONTRACTOR PRIOR TO ROUGH-IN.
 - EACH WINDOW IN CLASSROOM 121 SHALL HAVE A MOTOR OPERATED SHADE, AND MOTOR OPERATED BLACK-OUT BLINDS. CONNECT EACH MOTOR TO CIRCUIT L2NC-2. PROVIDE ONE RAISE/LOWER SWITCH FOR SHADES, AND ONE RAISE/LOWER SWITCH FOR BLACK-OUT BLINDS. COORDINATE EXACT LOCATION OF SWITCHES WITH THE OWNER AND GENERAL CONTRACTOR PRIOR TO ROUGH-IN.
 - PROVIDE FLOOR BOX EQUAL TO WIREMOLD RFB2 WITH TWO DUPLEX RECEPTACLES. COVER SHALL HAVE NICKEL (NK) FINISH. (TYPICAL OF EIGHT)
 - PROVIDE FLOOR BOX EQUAL TO WIREMOLD RFB6 SERIES. SEE DETAIL 2/SHEET E606.

- GENERAL NOTE: (KITCHEN EQUIPMENT)**
- CONTRACTOR SHALL COORDINATE ALL MOUNTING HEIGHTS AND EQUIPMENT LOCATIONS WITH EQUIPMENT VENDOR. GENERAL CONTRACTOR PRIOR TO ROUGH-IN.
 - VERIFY, MAXIMUM OCCP, NEMA CONFIGURATION, AND DISCONNECTING REQUIREMENTS WITH SUBMITTED EQUIPMENT NAMEPLATE DATA. DRAWINGS PRIOR TO PURCHASE OF ELECTRICAL DEVICES.
 - USE #12 AWG CONDUCTORS UNLESS OTHERWISE INDICATED IN KITCHEN EQUIPMENT KEYNOTES BELOW.

- KEYNOTES (KITCHEN EQUIPMENT)**
- PROVIDE CONNECTION COIL UP SECURITY GRILL. THE MOTOR AND ASSEMBLY SHALL BE INSTALLED ABOVE THE CEILING. PROVIDE JOA/NF DISCONNECT ABOVE CEILING FOR MOTOR. EQUIPMENT VENDOR SHALL PROVIDE A MOTOR SWITCH FOR CONTROL. ELECTRICAL CONTRACTOR SHALL MAKE ALL FINAL CONNECTIONS TO MOTOR AND SWITCH. COORDINATE EXACT LOCATION OF SWITCH WITH OWNER AND GENERAL CONTRACTOR PRIOR TO ROUGH-IN.
 - PROVIDE CONNECTION TO FREEZER EVAPORATOR FAN, DEFROSTER, ROOM HEATER AND LIGHTS. PROVIDE MOTOR RATED SWITCH AS DISCONNECTING MEANS FOR EVAPORATOR FAN.
 - PROVIDE CONNECTION TO COOLER EVAPORATOR FAN, AND LIGHTS. PROVIDE MOTOR RATED SWITCH AS DISCONNECTING MEANS FOR EVAPORATOR FAN.
 - PROVIDE 100A/3P UN-FUSED, NEMA 4X DISCONNECT FOR DISHWASHER MOTOR AND CONNECT TO PANEL WITH 3-#1, 1-#6(G), 1-1/4" MC.
 - PROVIDE 300A/3P UN-FUSED, NEMA 4X DISCONNECT FOR DISHWASHER BOOSTER HEAT AND CONNECT TO PANEL WITH 3-#10, 1-#10(G), 3/4" MC.
 - PROVIDE 208V/3P CONNECTION TO KITCHEN HOOD UTILITY DISTRIBUTION SYSTEM WITH 4-#6, 1-#10(G), 1".
 - PROVIDE 480V/3P CONNECTION TO KITCHEN HOOD UTILITY DISTRIBUTION SYSTEM WITH 3-#8, 1-#10(G), 3/4".
 - PROVIDE 30A/3P, NEMA 4X DISCONNECT, FUSED AT 12 AMPS FOR DISPOSER CONNECT TO PANEL WITH 3-#12, 1-#12(G), 3/4" MC.
 - PROVIDE NEMA 6-15R RECEPTACLE, CORD AND PLUG FOR CONNECTION TO ROLL-IN HEATED CABINET. INSTALL RECEPTACLE ABOVE UNIT.
 - PROVIDE NEMA 5-20R RECEPTACLE AT 42" AFF FOR REFRIGERATOR. INSTALL RECEPTACLE ABOVE UNIT.
 - PROVIDE NEMA 5-20R RECEPTACLE AT 42" AFF FOR FOOD SLICER.
 - PROVIDE NEMA 5-20R RECEPTACLE AT 42" AFF FOR CAN OPENER.
 - PROVIDE NEMA 5-20R RECEPTACLE AT 66" AFF FOR MICROWAVE.
 - PROVIDE NEMA 5-20R RECEPTACLE AT 42" AFF FOR COFFEE/TEA BREWER.
 - PROVIDE NEMA 5-20R RECEPTACLES AT 24" AFF FOR REFRIGERATORS.
 - PROVIDE NEMA 6-15R RECEPTACLE AT 24" AFF FOR MOBILE PLATE DISPENSER.
 - PROVIDE NEMA L6-30R RECEPTACLE AT 42" AFF FOR PELLET CHARGER. CONNECT WITH 2-#10, 1-#10(G), 3/4".
 - PROVIDE NEMA 5-20R RECEPTACLE AT 24" AFF FOR UNDER COUNTER REFRIGERATOR.
 - PROVIDE NEMA 5-20R RECEPTACLE AT 24" AFF FOR ICE MAKER.
 - PROVIDE NEMA L6-30R RECEPTACLE AT 24" AFF FOR SERVING LINE HEATED WELLS. CONNECT WITH 2-#10, 1-#10(G), 3/4". ROUGH-IN CIRCUIT BELOW SLAB. ROUTE FROM SERVING LINE TO NEAREST WALL. EXTEND UP TO ACCESSIBLE CEILING, AND EXTEND TO PANEL.
 - PROVIDE NEMA 5-20R GFCI RECEPTACLE AT 24" AFF FOR POINT OF SALE. ROUGH-IN CIRCUIT BELOW SLAB. ROUTE FROM SERVING LINE TO NEAREST WALL. EXTEND UP TO ACCESSIBLE CEILING, AND EXTEND TO PANEL.
 - PROVIDE TWO NEMA 5-20R GFCI RECEPTACLES AT 42" AFF FOR CONVENIENCE AT DESK/WORKTABLE.
 - PROVIDE NEMA 5-20R GFCI RECEPTACLES AT 42" AFF FOR DRINK MACHINES, AND COFFEE MAKERS.
 - PROVIDE NEMA L6-30R RECEPTACLE AT 24" AFF FOR HEATED WELL IN WORK TABLE.
 - PROVIDE NEMA 5-20R GFCI RECEPTACLE AT 24" AFF FOR HEATED WELL IN WORK TABLE.
 - PROVIDE NEMA 5-20R GFCI RECEPTACLE AT 24" AFF FOR SERVING LINE COLD WELLS. ROUGH-IN CIRCUIT BELOW SLAB. ROUTE FROM SERVING LINE TO NEAREST WALL. EXTEND UP TO ACCESSIBLE CEILING, AND EXTEND TO PANEL.

1 PARTIAL FLOOR PLAN - POWER PART A
E301A SCALE: 1/8"=1'-0"

Jon D. Rice & Associates, LLC
Electrical Engineering Consultants
5403 Castlewoods Court, Suite G, Rowood, MS, 39235
Tel: 601-919-8040 Fax: 601-919-8060 FROM 13017306

