



12 October 2023

Flowood Library  
103 Winners Circle  
Flowood, MS 39232

Project Name: Flowood Library Lighting Renovations  
Project Number: 23-017

## ADDENDUM NO. 1

### **NOTICE TO ALL DOCUMENT HOLDERS:**

The following additions, deletions, changes and clarifications to the drawings and specifications are to be included as part of the Contract Documents.

### **GENERAL**

#### **ITEM NO. 01      PRE BID CONFERENCE**

***NOTIFICATION:*** A Pre Bid Conference will be held on Monday, 10/16/23 at 1:00 pm located at Flowood Library, 103 Winners Circle, Flowood MS 39232.

### **DRAWINGS**

#### **ITEM NO. 02      SHEET R100 - EXISTING ELECTRICAL DRAWINGS - REFERENCE**

***ADD:*** sheet with the attached R100.

*ADD*S Existing Electrical Drawings for reference only.

#### **ITEM NO. 03      SHEET R101 - EXISTING ELECTRICAL DRAWINGS - REFERENCE**

***ADD:*** sheet with the attached R101.

*ADD*S Existing Electrical Drawings for reference only.

#### **ITEM NO. 04      SHEET R102 - EXISTING ELECTRICAL DRAWINGS - REFERENCE**

***ADD:*** sheet with the attached R102.

*ADD*S Existing Electrical Drawings for reference only.

Encl:    R100  
          R101  
          R102

Cc:        All document holders



## LIGHTING FIXTURE SCHEDULE

VOLTS	SYMBOL	WATTS	DESCRIPTION	MANUFACTURER	CAT. NO.	MOUNTING
277	A	4-32	FLUORESCENT TROFFER, 2'X4', ACRYLIC LENS, TWO BALLAST	LITHONIA	2SPG-432-FWA12 125-GE810-1/2	RECESSED
277	B	3-32	FLUORESCENT TROFFER, 2'X4', ACRYLIC LENS, TWO BALLAST	LITHONIA	2SPG-332-FWA12 125-GE810-1/2	RECESSED
277	C	2-32	FLUORESCENT TROFFER, 2'X4', ACRYLIC LENS, TWO BALLAST	LITHONIA	2SPG-232-FWA12 125-GE810-1/2	RECESSED
277	D	2-32	FLUORESCENT TROFFER, 2'X4', ACRYLIC LENS, WITH EMERGENCY BATTERY PACK	LITHONIA	2SPG-232-FWA12 125-GE810-1/2-EL14	RECESSED
277	E	LED	EXIT SIGN, SINGLE FACE, ARROWS INDICATING DIRECTION AS SHOWN, WITH EMERGENCY BATTERY PACK	LITHONIA	LES-1R-ELN	NOTE 1
277	F	LED	EXIT SIGN, DOUBLE FACE, ARROWS INDICATING DIRECTION AS SHOWN, WITH EMERGENCY BATTERY PACK	LITHONIA	LES-2R-ELN	NOTE 1
277	G	2-32	INDUSTRIAL FLUORESCENT, 48", WITH CHAIN HANGERS	LITHONIA	AF10-232-FQ-CW- GE810-1/2-HC	CEILING OR AS NOTED
277	H	3-32	SURFACE FLUORESCENT, 48", WITH HIGH IMPACT ACRYLIC LENS	LITHONIA	AW-332-AR- GE810-1/2	CEILING OR AS NOTED
277	I	4-32	FLUORESCENT TROFFER, 2'X4', ACRYLIC LENS, TWO BALLAST, WITH EMERGENCY BATTERY PACK	LITHONIA	2SPG-432-FWA12 125-GE810-2/2-EL14	RECESSED
277	J	3-32	FLUORESCENT TROFFER, 2'X4', ACRYLIC LENS, TWO BALLAST, WITH EMERGENCY BATTERY PACK	LITHONIA	2SPG-332-FWA12 125-GE810-1/21-EL14	RECESSED
277	K	3-32	FLUORESCENT INDIRECT/DIRECT TROFFER, 2'X4', WITH EMERGENCY BATTERY PACK	LITHONIA	2AVG-332-MDR- GE810-1/3-EL14	RECESSED
277	L	3-32	FLUORESCENT INDIRECT/DIRECT TROFFER, 2'X4', WITH EMERGENCY BATTERY PACK	LITHONIA	2AVG-332-MDR- GE810-1/3-EL14	RECESSED
277	M	3-32	FLUORESCENT TROFFER, 2'X4', PARABOLIC, TWO BALLAST	LITHONIA	2PM3NB-332-2R- 1ND-GE810-1/21	RECESSED
277	N	1-32	FLUORESCENT UNDER CABINET FIXTURE, 48"	LITHONIA	N2S-32-GE810	UNDER CABINET AS DIRECTED BY ARCH.
277	O	1-17	FLUORESCENT UNDER CABINET FIXTURE, 24"	LITHONIA	N2S-17-GE810	UNDER CABINET AS DIRECTED BY ARCH.
277	P	-	RECESSED LINEAR FLUORESCENT, TWO (2) 18 LAMPS CROSS SECTION, LENGTH AS SHOWN	LITE CONTROL	BSN-24TB-CWMA- P/BW-ELV10-CP	RECESSED
277	Q	100	HID DOWNLIGHT, METAL HALIDE, WHEAT REFLECTOR, MASTER COLOR LAMP	LITHONIA	AR-100M-7WTR	RECESSED
277	R	2-32	RECESSED LINEAR FLUORESCENT, WALL WASH	LITHONIA	WW-232-WLD- GE810-1/2	RECESSED
277	S	2-32	INDUSTRIAL FLUORESCENT, 48", WITH COLD WEATHER BALLAST, WIRE GUARD, & CHAIN HANGERS	LITHONIA	AF10-232-FQ-CW- GE810-1/2-HC	CEILING OR AS NOTED
277	T	1-42	FLUORESCENT DOWNLIGHT, VERTICAL LAMP, WHEAT REFLECTOR	HALO	C7042-2E-7001- WH-TRMB-P	RECESSED
277	U	1-42	FLUORESCENT DOWNLIGHT, VERTICAL LAMP, WHEAT REFLECTOR	HALO	C7042-2EEM-7001- WH-TRMB-P	RECESSED
120	V	200	INCANDESCENT DOWNLIGHT, WALL WASH, WHEAT REFLECTOR	ARTEMIDE	AKW-7WTR	RECESSED
120	W	75	INCANDESCENT LOW-VOLTAGE PENDANT, ADJUSTABLE HEIGHT, SPOT DISTRIBUTOR	ARTEMIDE	MIKADO	CEILING WHERE DIRECTED BY ARCH.
277	X	1-42	FLUORESCENT DOWNLIGHT, VERTICAL LAMP, WHEAT REFLECTOR, WITH EMERGENCY BATTERY PACK	HALO	C7042-2EEM-7001- WH-TRMB-P	RECESSED
120	Y	200	INCANDESCENT DOWNLIGHT, VERTICAL LAMP, WHEAT REFLECTOR	LITHONIA	A-7WTR	RECESSED
277	Z	2-32	FLUORESCENT STAGGERED STRIP, ALUMINUM	LITHONIA	SS-232-AL- GE810-1/2	AT COVE WHERE DIRECTED BY ARCH.
277	AA	2-150	DECORATIVE HID PENDANT, METAL HALIDE, WITH MASTER COLOR LAMP, QUARTZ RESTRIKE SYSTEM, AND SATIN CHROME FINISH, NOTE 3	SPI	SFR-100A04-FNI- BD	SUSPEND TO 15'-0" A.F.F.
277	BB	2-150	DECORATIVE HID PENDANT, METAL HALIDE, WITH MASTER COLOR LAMP, QUARTZ RESTRIKE SYSTEM, AND SATIN CHROME FINISH, NOTE 3	SPI	SFR-100A04-FNI- BD	SUSPEND TO 15'-0" A.F.F.
277	CC	-	LINEAR FLUORESCENT, 3-32 TB LAMP, CROSS SECTION, LENGTH AS SHOWN, EMERGENCY BATTERY PACK AS SHOWN, AIRCRAFT CABLE	FNI/UTE	SFR-332-EP-AC- FE-CUSTOM COLOR	SUSPEND TO 8'-0" A.F.F. OR AS NOTED
277	DD	150	HID DOWNLIGHT, METAL HALIDE, SLOPE ADAPTER, WHEAT REFLECTOR, MASTER COLOR LAMP	LITHONIA	AM-150M-9WTR	RECESSED
277	EE	150	SEM-RECESSED WALL WASH, TUNGSTEN HALOGEN WITH UV FILTER	ELLIPTIPAR	T200-0150-T-02- 000	RECESSED
277	FF	2-13	DECORATIVE FLUORESCENT WALL SCONCE	ARTEMIDE	ZINK WALL 412- WHITE BLACK SHADE	WHERE DIRECTED BY ARCH.
277	GG	42	DECORATIVE FLUORESCENT WALL BRACKET, WITH COCKSNECK MOUNTING BRACKET	ABOULTE	AD100-42PL-BL- 150SWH-26-WMB	WHERE DIRECTED BY ARCH.
277	HH	42	DECORATIVE FLUORESCENT, SUSPEND WITH AIRCRAFT CABLE	ARTEMIDE	ZINK PENDANT 251 WHITE BLACK SHADE	SUSPEND TO 8'-0" A.F.F.
277	II	42	DECORATIVE FLUORESCENT WALL BRACKET, PLATINUM FLOOR FINISH	ABOULTE	AD100-42PL-BL- 150SWH-26-WMB	WHERE DIRECTED BY ARCH.
120	JJ	6-50	LV HIGHLINE CABLE LTD. SYSTEM WITH CABLES, MTC SETS, TRANSFORMER, POWER SUPPLY, CABLE, PLAIN CHROME FINISHES (S), FLOOD DISTRIBUTOR, LAMPS	BRUCK	TS10109/150570H/ T600-120V/150118/ TS02501/250H-FG	WHERE DIRECTED BY ARCH.
277	KK	150	HID WALL WASH, METAL HALIDE, COINTEGRATED MOUNTING ARM, MASTER COLOR LAMP	ELLIPTIPAR	M115-150W-1-02- 000-VCS0300	AS DIRECTED BY ARCH.
277	LL	-	COLD CATHODE LIGHTING SYSTEM, SEE SPECIFICATIONS	CATHODE LTD. SYS.	SEE SPECS.	WHERE DIRECTED BY ARCH.
277	MM	2-150	DECORATIVE HID PENDANT, METAL HALIDE, WITH MASTER COLOR LAMP, QUARTZ RESTRIKE SYSTEM AND SATIN CHROME FINISH, NOTE 3	SPI	SFR-100A04-FNI- BD	SUSPEND TO 16'-0" A.F.F.
277	NN	42	DECORATIVE FLUORESCENT PENDANT, FROSTED GLASS LENS, CUSTOM COLOR	ALUMILITE	WL-3-42WPL-FG- CC	SUSPEND TO 8'-0" A.F.F.
277	OO	42	DECORATIVE FLUORESCENT PENDANT, FROSTED GLASS LENS, CUSTOM COLOR	ALUMILITE	WL-3-42WPL-FG- CC	SUSPEND TO 8'-0" A.F.F.
277	PP	42	DECORATIVE FLUORESCENT WALL BRACKET, FROSTED GLASS LENS, CUSTOM COLOR	ALUMILITE	WL-10-42WPL-FG- CC	WHERE DIRECTED BY ARCH.
277	QQ	70	HID WALL BRACKET, UP/LIGHT, METAL HALIDE, WITH AFL-15 CUSTOM REFLECTOR SYSTEM, MASTER COLOR LAMP	KIM	W018U/SPOTNOD AFL16/70MH/PS-P	COLUMN 10'-8" A.F.F., UP/LIGHT
277	RR	70	HID WALL BRACKET, UP/LIGHT, METAL HALIDE, WITH AFL-15 CUSTOM REFLECTOR SYSTEM, MASTER COLOR LAMP, QUARTZ RESTRIKE SYS.	KIM	W018U/SPOTNOD AFL16/70MH/PS-P	COLUMN 10'-8" A.F.F., UP/LIGHT
277	SS	250	O.D. HID WALL BRACKET, METAL HALIDE, UP/LIGHT, TYPE II DISTRIBUTION	KIM	W018U/250MH/ PS-P	EXT. COLUMN 10'-8" A.F.F.
277	TT	100	O.D. HID WALL BRACKET, METAL HALIDE, UP/LIGHT, TYPE II DISTRIBUTION	KIM	W014U3/100MH/ PS-P	EXT. COLUMN 11'-4" A.F.F.
277	UU	70	O.D. HID DOWNLIGHT, METAL HALIDE	LITHONIA	L2H-70M-95B- T73	RECESSED
277	VV	39	O.D. DECORATIVE FLUORESCENT WALL BRACKET	BEGA	4532P-139W2201	AS DIRECTED BY ARCH.
277	WW	100	O.D. HID WALL BRACKET, METAL HALIDE	LITHONIA	TWA-100M	EXT. WALL 8'-8" A.F.F.
120	XX	150	INCANDESCENT DOWNLIGHT, ADJUSTABLE	LITHONIA	D-7ACT	RECESSED
277	YY	100	O.D. HID IN-GRADE ACCENT FIXTURE, METAL HALIDE, WITH HALF SHIELD	KIM	LT1710/PS-70 MH/PS10/RETIO	RECESSED AT COLUMN BASE AS DIRECTED
277	ZZ	150	O.D. HID FLOOD LIGHT, METAL HALIDE, WIDE FLOOD, STANCON MOUNTED	KIM	AF111/150MH/ SM2/PS-P	SEE GROUND MTD. FIXTURE DETAIL
277	a	250	O.D. HID FLOOD LIGHT, METAL HALIDE, WIDE FLOOD, STANCON MOUNTED	KIM	AF121/250MH/ SM2/PS-P	SEE GROUND MTD. FIXTURE DETAIL
277	b	400	O.D. HID AREA LIGHT, TYPE V, METAL HALIDE, WITH 26 SQUARE STRAIGHT STEEL POLE WITH 6" RECEPT, NATURAL ALUMINUM FINISH	LITHONIA	K08-K08M-RSS- SPF-SSS54C-DNA	SEE POLE BASE DETAIL
277	c	-	NOT USED	-	-	-
277	d	175	O.D. HID AREA LIGHT, TYPE IV, METAL HALIDE, WITH 14 SQUARE STRAIGHT STEEL POLE, PLATINUM SILVER FINISH	KIM	15A/2ET4/175MH/ KS314-4120/PS-P	SEE DECO. POLE BASE DETAIL
277	e	3-40	FLUORESCENT TROFFER, 2'X2', PARABOLIC	LITHONIA	2PM3NB-3CF40- 940-GE810-1/3-2R	RECESSED
277	f	3-40	FLUORESCENT TROFFER, 2'X2', PARABOLIC, WITH EMERGENCY BATTERY PACK	LITHONIA	2PM3NB-3CF40- 940-GE810-1/3-2R-EL14	RECESSED
277	g	3-32	FLUORESCENT TROFFER, 2'X4', PARABOLIC, PLASTIC CUBE LENS	LITHONIA	2SPG-332-FWPC1- GE810-1/3	RECESSED
277	h	3-32	FLUORESCENT TROFFER, 2'X4', PARABOLIC PLASTIC CUBE LENS, WITH EMERGENCY BATTERY PACK	LITHONIA	2SPG-332-FWPC1- GE810-1/3-EL14	RECESSED
277	i	2-13	DECORATIVE FLUORESCENT WALL SCONCE, BRUSHED STAINLESS FINISH	ARTEMIDE	PERFORATED SCONCE 411	WHERE DIRECTED BY ARCHITECT
277	j	-	NOT USED	-	-	-
277	k	70	O.D. HID LOW LEVEL FLOOD LIGHT, METAL HALIDE	KIM	LLF-60/70MH/ PS-P	RECESSED AT COLUMN BASE AS DIRECTED
277	l	-	NOT USED	-	-	-
277	m	250	HID WALL BRACKET, UP/LIGHT, METAL HALIDE, MASTER COLOR LAMP	ELLIPTIPAR	M116-0250-2-02- 000	WALL MOUNT C.L. UP 24'-0" A.F.F.

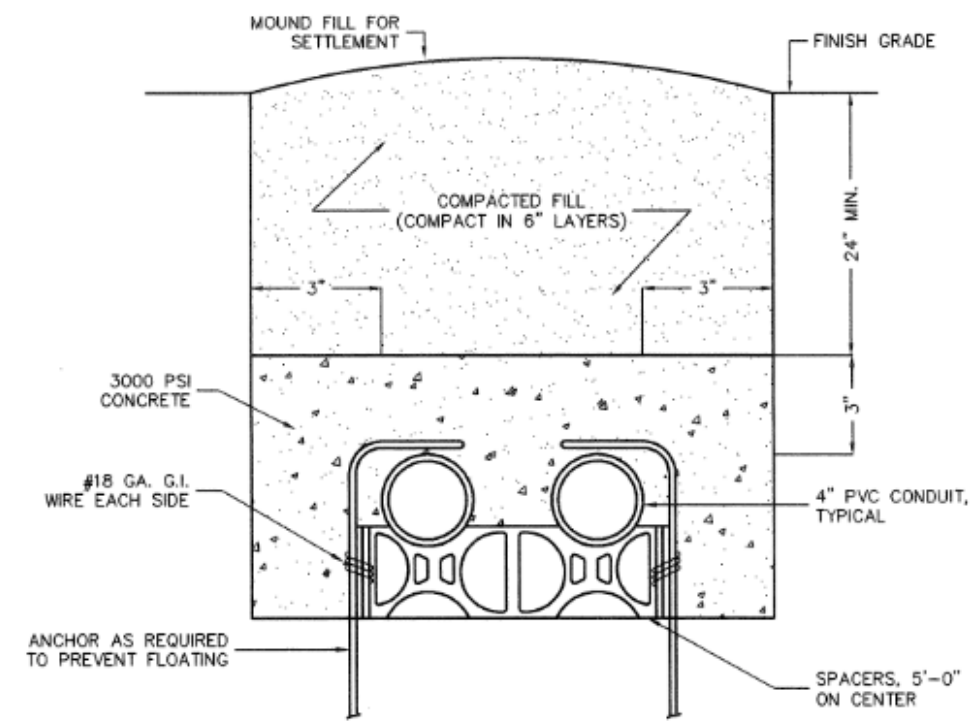
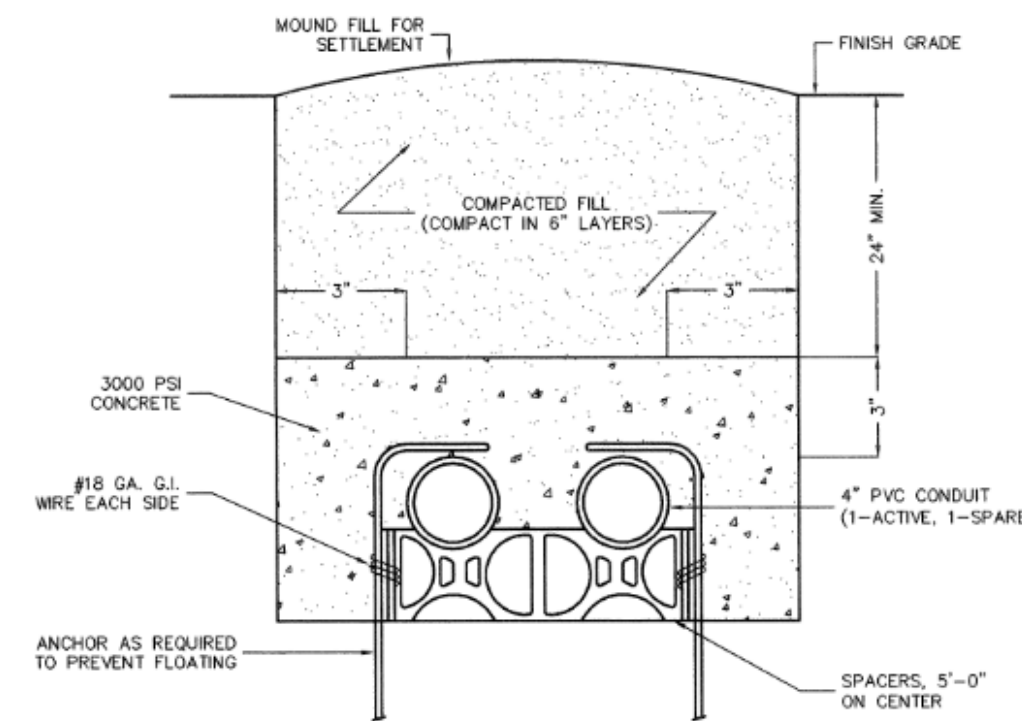
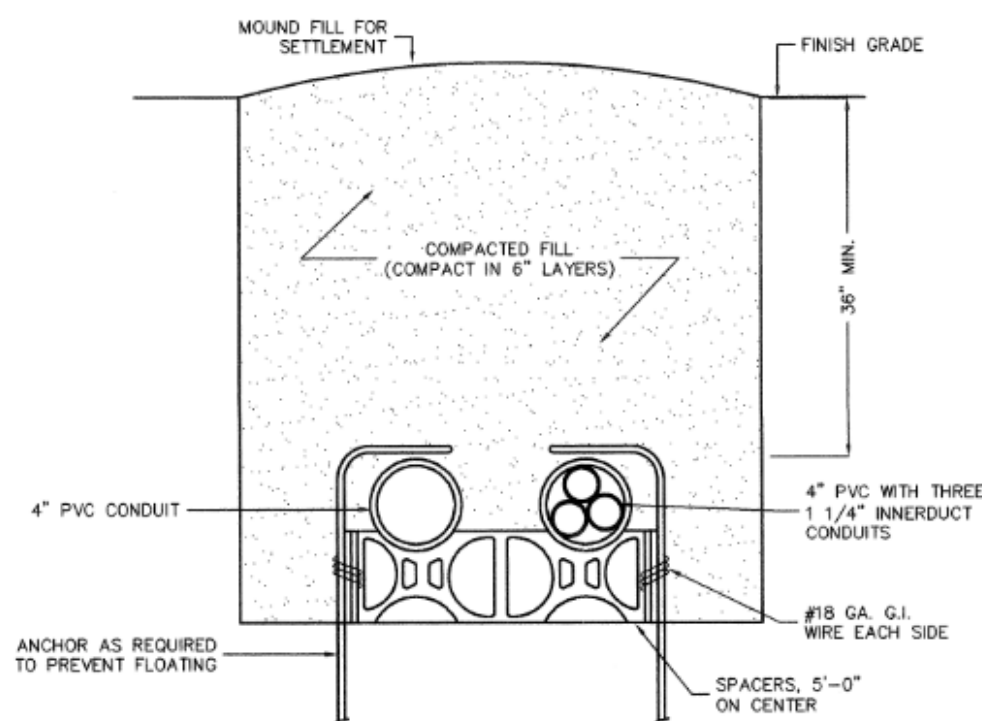
## PANEL "HDP"

VOLTS	SYMBOL	WATTS	DESCRIPTION	MANUFACTURER	CAT. NO.	MOUNTING
277	A	4-32	FLUORESCENT TROFFER, 2'X4', ACRYLIC LENS, TWO BALLAST	LITHONIA	2SPG-432-FWA12 125-GE810-1/2	RECESSED
277	B	3-32	FLUORESCENT TROFFER, 2'X4', ACRYLIC LENS, TWO BALLAST	LITHONIA	2SPG-332-FWA12 125-GE810-1/2	RECESSED
277	C	2-32	FLUORESCENT TROFFER, 2'X4', ACRYLIC LENS, TWO BALLAST	LITHONIA	2SPG-232-FWA12 125-GE810-1/2	RECESSED
277	D	2-32	FLUORESCENT TROFFER, 2'X4', ACRYLIC LENS, WITH EMERGENCY BATTERY PACK	LITHONIA	2SPG-232-FWA12 125-GE810-1/2-EL14	RECESSED
277	E	LED	EXIT SIGN, SINGLE FACE, ARROWS INDICATING DIRECTION AS SHOWN, WITH EMERGENCY BATTERY PACK	LITHONIA	LES-1R-ELN	NOTE 1
277	F	LED	EXIT SIGN, DOUBLE FACE, ARROWS INDICATING DIRECTION AS SHOWN, WITH EMERGENCY BATTERY PACK	LITHONIA	LES-2R-ELN	NOTE 1
277	G	2-32	INDUSTRIAL FLUORESCENT, 48", WITH CHAIN HANGERS	LITHONIA	AF10-232-FQ-CW- GE810-1/2-HC	CEILING OR AS NOTED
277	H	3-32	SURFACE FLUORESCENT, 48", WITH HIGH IMPACT ACRYLIC LENS	LITHONIA	AW-332-AR- GE810-1/2	CEILING OR AS NOTED
277	I	4-32	FLUORESCENT TROFFER, 2'X4', ACRYLIC LENS, TWO BALLAST, WITH EMERGENCY BATTERY PACK	LITHONIA	2SPG-432-FWA12 125-GE810-2/2-EL14	RECESSED
277	J	3-32	FLUORESCENT TROFFER, 2'X4', ACRYLIC LENS, TWO BALLAST, WITH EMERGENCY BATTERY PACK	LITHONIA	2SPG-332-FWA12 125-GE810-1/21-EL14	RECESSED
277	K	3-32	FLUORESCENT INDIRECT/DIRECT TROFFER, 2'X4', WITH EMERGENCY BATTERY PACK	LITHONIA	2AVG-332-MDR- GE810-1/3-EL14	RECESSED
277	L	3-32	FLUORESCENT INDIRECT/DIRECT TROFFER, 2'X4', WITH EMERGENCY BATTERY PACK	LITHONIA	2AVG-332-MDR- GE810-1/3-EL14	RECESSED
277	M	3-32	FLUORESCENT TROFFER, 2'X4', PARABOLIC, TWO BALLAST	LITHONIA	2PM3NB-332-2R- 1ND-GE810-1/21	RECESSED
277	N	1-32	FLUORESCENT UNDER CABINET FIXTURE, 48"	LITHONIA	N2S-32-GE810	UNDER CABINET AS DIRECTED BY ARCH.
277	O	1-17	FLUORESCENT UNDER CABINET FIXTURE, 24"	LITHONIA	N2S-17-GE810	UNDER CABINET AS DIRECTED BY ARCH.
277	P	-	RECESSED LINEAR FLUORESCENT, TWO (2) 18 LAMPS CROSS SECTION, LENGTH AS SHOWN	LITE CONTROL	BSN-24TB-CWMA- P/BW-ELV10-CP	RECESSED
277	Q	100	HID DOWNLIGHT, METAL HALIDE, WHEAT REFLECTOR, MASTER COLOR LAMP	LITHONIA	AR-100M-7WTR	RECESSED
277	R	2-32	RECESSED LINEAR FLUORESCENT, WALL WASH	LITHONIA	WW-232-WLD- GE810-1/2	RECESSED
277	S	2-32	INDUSTRIAL FLUORESCENT, 48", WITH COLD WEATHER BALLAST, WIRE GUARD, & CHAIN HANGERS	LITHONIA	AF10-232-FQ-CW- GE810-1/2-HC	CEILING OR AS NOTED
277	T	1-42	FLUORESCENT DOWNLIGHT, VERTICAL LAMP, WHEAT REFLECTOR	HALO	C7042-2E-7001- WH-TRMB-P	RECESSED
277	U	1-42	FLUORESCENT DOWNLIGHT, VERTICAL LAMP, WHEAT REFLECTOR	HALO	C7042-2EEM-7001- WH-TRMB-P	RECESSED
120	V	200	INCANDESCENT DOWNLIGHT, WALL WASH, WHEAT REFLECTOR	ARTEMIDE	AKW-7WTR	RECESSED
120	W	75	INCANDESCENT LOW-VOLTAGE PENDANT, ADJUSTABLE HEIGHT, SPOT DISTRIBUTOR	ARTEMIDE	MIKADO	CEILING WHERE DIRECTED BY ARCH.
277	X	1-42	FLUORESCENT DOWNLIGHT, VERTICAL LAMP, WHEAT REFLECTOR, WITH EMERGENCY BATTERY PACK	HALO	C7042-2EEM-7001- WH-TRMB-P	RECESSED
120	Y	200	INCANDESCENT DOWNLIGHT, VERTICAL LAMP, WHEAT REFLECTOR	LITHONIA	A-7WTR	RECESSED
277	Z	2-32	FLUORESCENT STAGGERED STRIP, ALUMINUM	LITHONIA	SS-232-AL- GE810-1/2	AT COVE WHERE DIRECTED BY ARCH.
277	AA	2-150	DECORATIVE HID PENDANT, METAL HALIDE, WITH MASTER COLOR LAMP, QUARTZ RESTRIKE SYSTEM, AND SATIN CHROME FINISH, NOTE 3	SPI	SFR-100A04-FNI- BD	SUSPEND TO 15'-0" A.F.F.
277	BB	2-150	DECORATIVE HID PENDANT, METAL HALIDE, WITH MASTER COLOR LAMP, QUARTZ RESTRIKE SYSTEM, AND SATIN CHROME FINISH, NOTE 3	SPI	SFR-100A04-FNI- BD	SUSPEND TO 15'-0" A.F.F.
277	CC	-	LINEAR FLUORESCENT, 3-32 TB LAMP, CROSS SECTION, LENGTH AS SHOWN, EMERGENCY BATTERY PACK AS SHOWN, AIRCRAFT CABLE	FNI/UTE	SFR-332-EP-AC- FE-CUSTOM COLOR	SUSPEND TO 8'-0" A.F.F. OR AS NOTED
277	DD	150	HID DOWNLIGHT, METAL HALIDE, SLOPE ADAPTER, WHEAT REFLECTOR, MASTER COLOR LAMP	LITHONIA	AM-150M-9WTR	RECESSED
277	EE	150	SEM-RECESSED WALL WASH, TUNGSTEN HALOGEN WITH UV FILTER	ELLIPTIPAR	T200-0150-T-02- 000	RECESSED
277	FF	2-13	DECORATIVE FLUORESCENT WALL SCONCE	ARTEMIDE	ZINK WALL 412- WHITE BLACK SHADE	WHERE DIRECTED BY ARCH.
277	GG	42	DECORATIVE FLUORESCENT WALL BRACKET, WITH COCKSNECK MOUNTING BRACKET	ABOULTE	AD100-42PL-BL- 150SWH-26-WMB	WHERE DIRECTED BY ARCH.
277	HH	42	DECORATIVE FLUORESCENT, SUSPEND WITH AIRCRAFT CABLE	ARTEMIDE	ZINK PENDANT 251 WHITE BLACK SHADE	SUSPEND TO 8'-0" A.F.F.
277	II	42	DECORATIVE FLUORESCENT WALL BRACKET, PLATINUM FLOOR FINISH	ABOULTE	AD100-42PL-BL- 150SWH-26-WMB	WHERE DIRECTED BY ARCH.
120	JJ	6-50	LV HIGHLINE CABLE LTD. SYSTEM WITH CABLES, MTC SETS, TRANSFORMER, POWER SUPPLY, CABLE, PLAIN CHROME FINISHES (S), FLOOD DISTRIBUTOR, LAMPS	BRUCK	TS10109/150570H/ T600-120V/150118/ TS02501/250H-FG	WHERE DIRECTED BY ARCH.
277	KK	150	HID WALL WASH, METAL HALIDE, COINTEGRATED MOUNTING ARM, MASTER COLOR LAMP	ELLIPTIPAR	M115-150W-1-02- 000-VCS0300	AS DIRECTED BY ARCH.
277	LL	-	COLD CATHODE LIGHTING SYSTEM, SEE SPECIFICATIONS	CATHODE LTD. SYS.	SEE SPECS.	WHERE DIRECTED BY ARCH.
277	MM	2-150	DECORATIVE HID PENDANT, METAL HALIDE, WITH MASTER COLOR LAMP, QUARTZ RESTRIKE SYSTEM AND SATIN CHROME FINISH, NOTE 3	SPI	SFR-100A04-FNI- BD	SUSPEND TO 16'-0" A.F.F.
277	NN	42	DECORATIVE FLUORESCENT PENDANT, FROSTED GLASS LENS, CUSTOM COLOR	ALUMILITE	WL-3-42WPL-FG- CC	SUSPEND TO 8'-0" A.F.F.
277	OO	42	DECORATIVE FLUORESCENT PENDANT, FROSTED GLASS LENS, CUSTOM COLOR	ALUMILITE	WL-3-42WPL-FG- CC	SUSPEND TO 8'-0" A.F.F.
277	PP	42	DECORATIVE FLUORESCENT WALL BRACKET, FROSTED GLASS LENS, CUSTOM COLOR	ALUMILITE	WL-10-42WPL-FG- CC	WHERE DIRECTED BY ARCH.
277	QQ	70	HID WALL BRACKET, UP/LIGHT, METAL HALIDE, WITH AFL-15 CUSTOM REFLECTOR SYSTEM, MASTER COLOR LAMP	KIM	W018U/SPOTNOD AFL16/70MH/PS-P	COLUMN 10'-8" A.F.F., UP/LIGHT
277	RR	70	HID WALL BRACKET, UP/LIGHT, METAL HALIDE, WITH AFL-15 CUSTOM REFLECTOR SYSTEM, MASTER COLOR LAMP, QUARTZ RESTRIKE SYS.	KIM	W018U/SPOTNOD AFL16/70MH/PS-P	COLUMN 10'-8" A.F.F., UP/LIGHT
277	SS	250	O.D. HID WALL BRACKET, METAL HALIDE, UP/LIGHT, TYPE II DISTRIBUTION	KIM	W018U/250MH/ PS-P	EXT. COLUMN 10'-8" A.F.F.
277	TT	100	O.D. HID WALL BRACKET, METAL HALIDE, UP/LIGHT, TYPE II DISTRIBUTION	KIM	W014U3/100MH/ PS-P	EXT. COLUMN 11'-4" A.F.F.
277	UU	70	O.D. HID DOWNLIGHT, METAL HALIDE	LITHONIA	L2H-70M-95B- T73	RECESSED
277	VV	39	O.D. DECORATIVE FLUORESCENT WALL BRACKET	BEGA	4532P-139W2201	AS DIRECTED BY ARCH.
277	WW	100	O.D. HID WALL BRACKET, METAL HALIDE	LITHONIA	TWA-100M	EXT. WALL 8'-8" A.F.F.
120	XX	150	INCANDESCENT DOWNLIGHT, ADJUSTABLE	LITHONIA	D-7ACT	RECESSED
277	YY	100	O.D. HID IN-GRADE ACCENT FIXTURE, METAL HALIDE, WITH HALF SHIELD	KIM	LT1710/PS-70 MH/PS10/RETIO	RECESSED AT COLUMN BASE AS DIRECTED
277	ZZ	150	O.D. HID FLOOD LIGHT, METAL HALIDE, WIDE FLOOD, STANCON MOUNTED	KIM	AF111/150MH/ SM2/PS-P	SEE GROUND MTD.



GENERAL DUCT BANK NOTES:

CONDUITS, SIZES AS NOTED ON THE PLANS, SHALL BE SCHEDULE 40 PVC UNLESS OTHERWISE NOTED ON THE PLANS. ALL BENDS SHALL BE LONG RADIUS, RIGID STEEL, GALVANIZED. CONVERT TO RIGID STEEL, GALVANIZED CONDUIT FOR ALL RISERS ABOVE EXISTING/FINISHED GRADE.  
MINIMUM SPACING FROM CENTER TO CENTER OF CONDUITS SHALL BE IN ACCORDANCE WITH THE NATIONAL ELECTRICAL CODE.  
PROVIDE MARKER TAPE 12" BELOW FINISHED GRADE. CONDUITS SHALL BE A MINIMUM OF 36" BELOW FINISHED GRADE.  
BACKFILL ABOVE THE DUCTBANK TO BE COMPACTED IN 6" LAYERS. MOUND BACKFILL ON FINISHED GRADE FOR SETTLEMENT.  
PROVIDE A MINIMUM OF 24" SEPARATION BETWEEN ALL COMMUNICATIONS CONDUITS AND THE NEAREST POWER CONDUITS. MEASUREMENT TO BE MADE BETWEEN OUTSIDE WALLS OF CONDUITS.  
ALL EMPTY DUCT BANK CONDUITS TO HAVE NYLON PULL CORDS INSTALLED.  
SEE SPECIFICATIONS FOR CONCRETE ENCASEMENT REQUIREMENTS FOR DUCT BANKS SHOWN ON DRAWINGS TO BE CONCRETE ENCASED.



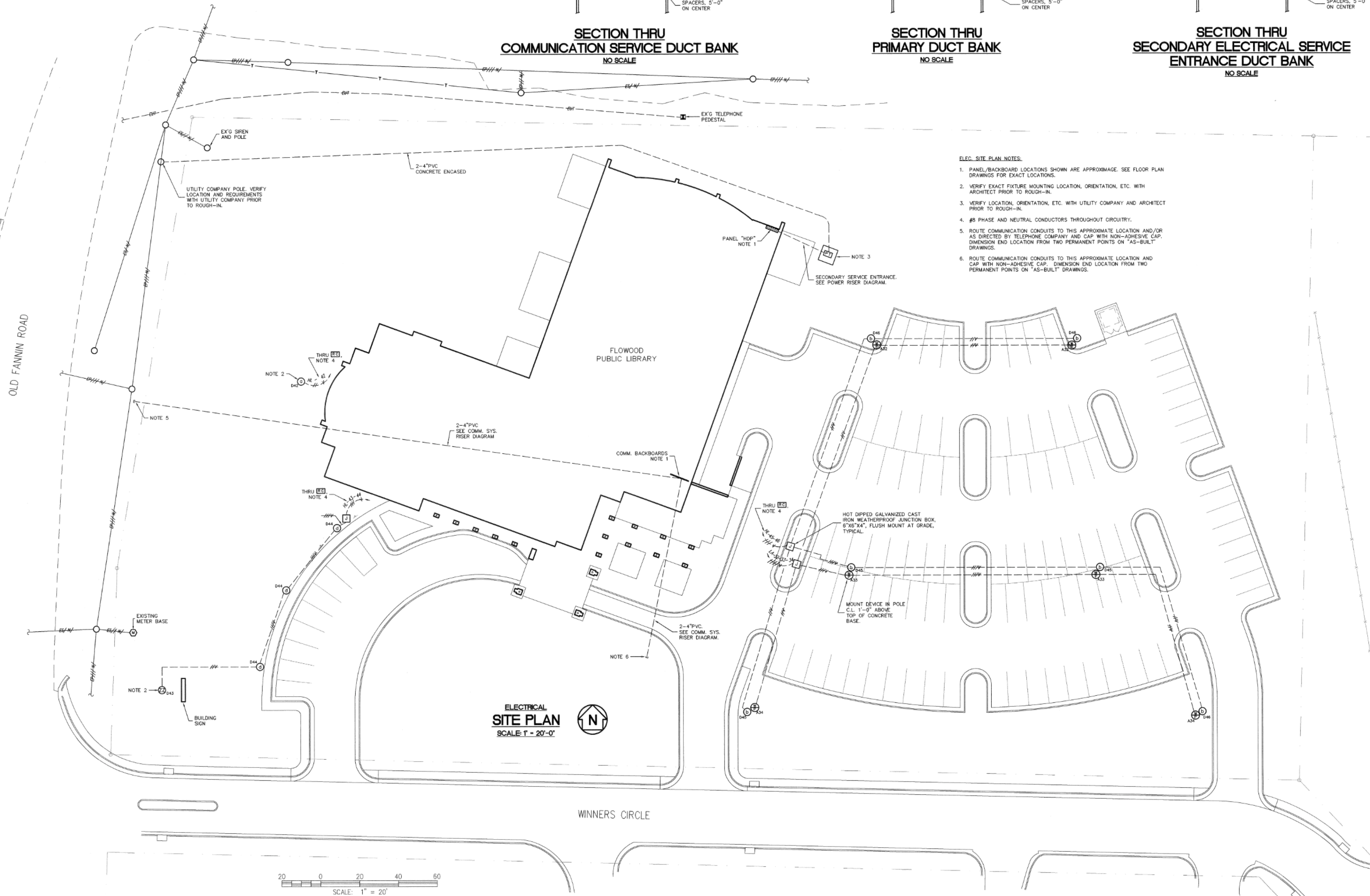
SECTION THRU  
COMMUNICATION SERVICE DUCT BANK  
NO SCALE

SECTION THRU  
PRIMARY DUCT BANK  
NO SCALE

SECTION THRU  
SECONDARY ELECTRICAL SERVICE  
ENTRANCE DUCT BANK  
NO SCALE

ELEC. SITE PLAN NOTES:

1. PANEL/BACKBOARD LOCATIONS SHOWN ARE APPROXIMATE. SEE FLOOR PLAN DRAWINGS FOR EXACT LOCATIONS.
2. VERIFY EXACT FIXTURE MOUNTING LOCATION, ORIENTATION, ETC. WITH ARCHITECT PRIOR TO ROUGH-IN.
3. VERIFY LOCATION, ORIENTATION, ETC. WITH UTILITY COMPANY AND ARCHITECT PRIOR TO ROUGH-IN.
4. #5 PHASE AND NEUTRAL CONDUCTORS THROUGHOUT CIRCUITRY.
5. ROUTE COMMUNICATION CONDUITS TO THIS APPROXIMATE LOCATION AND/OR AS DIRECTED BY TELEPHONE COMPANY AND CAP WITH NON-ADHESIVE CAP. DIMENSION END LOCATION FROM TWO PERMANENT POINTS ON "AS-BUILT" DRAWINGS.
6. ROUTE COMMUNICATION CONDUITS TO THIS APPROXIMATE LOCATION AND CAP WITH NON-ADHESIVE CAP. DIMENSION END LOCATION FROM TWO PERMANENT POINTS ON "AS-BUILT" DRAWINGS.



22 AUGUST 2023

CONSTRUCTION  
DOCUMENTS  
WBA # 23-017

REVISIONS  
NO. DESCRIPTION DATE



FOR REFERENCE ONLY

NOT TO SCALE

22 AUGUST 2023

CONSTRUCTION  
DOCUMENTS  
WBA # 23-017

REVISIONS  
NO. DESCRIPTION DATE

