



Monday 17 October 2022

Lincoln County School District Central Office REBID  
Lincoln County School District

---

## ADDENDUM NO. 02

### NOTICE TO ALL DOCUMENT HOLDERS:

The following additions, deletions, changes and clarifications to the drawings and specifications are to be included as part of the Contract Documents.

### GENERAL

#### ITEM NO. 1

##### **ELECTRONIC BID SUBMISSION**

The Project is now available via the Central Bidding website.

Electronic Bids can be submitted at [www.centralbidding.com](http://www.centralbidding.com). For any questions relating to the electronic bidding process, please call Central Bidding at 225-810-4814.

### SPECIFICATIONS

#### ITEM NO. 2

##### **10.2239 FOLDING PANEL PARTITIONS**

Under PART 2, SECTION 2, SUBSECTION A, **CHANGE** the spec description from **MOTOR OPERATED** to **MANUALLY OPERATED**.

### DRAWINGS

#### ITEM NO. 3

##### **SHEET A103 REFLECTED CEILING PLAN**

**REPLACE** sheet with attached revised sheet **A103**.

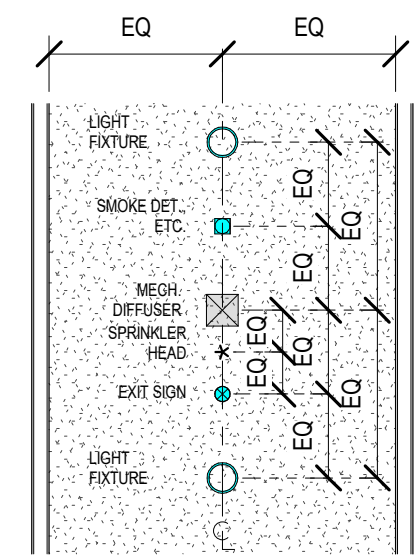
Encl: Drawings (25 Sheets - 24x36):

**A103 REFLECTED CEILING PLAN**

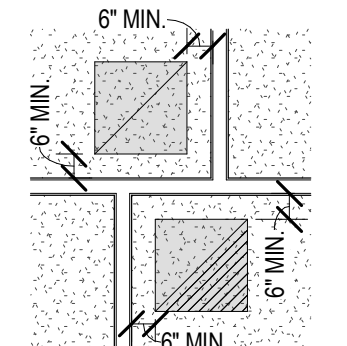
cc: All Document Holders  
File 22-008

## RCP GENERAL NOTES

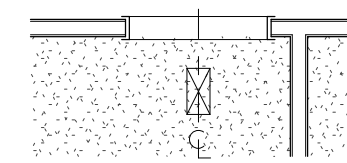
- REFER TO FP. DWGS. FOR ALL AUTOMATIC FIRE SUPPRESSION SYS. REQ. G.C. TO COORD. SPRINKLER SYS. W/ WORK OF ALL OTHER TRADES.
- CONFIRM LIGHTING LAYOUT W/ ARCH. PRIOR TO INSTALLATION.
- REFER TO MECH. & ELEC. DWGS. FOR WALL MTD. GRILLES & DIFFUSERS & ALL OTHER ADDITIONAL FIXTURES, DEVICES & ITEMS NOT SHOWN.
- INSTALL ALL CEILING FIXTURES AS DIMENSIONED ON RCPs. IN ROOMS/SPACES W/ ONLY ONE FIXTURE, CENTER EA. WAY.
- FOR TYP. CONDITIONS, FOLLOW INSTALLATION PARAMETERS AS SHOWN BELOW.
- FOR ALL ATYPICAL CONDITIONS, & FOR ALL CONDITIONS WHERE CEILING COMPONENTS CANNOT BE INSTALLED AS SHOWN ON RCPs, COORDINATE EXACT LOCATIONS W/ ARCHITECT IN FIELD.
- LIGHT FIXTURES, MECH. DIFFUSERS & GRILLES, & ALL OTHER DEVICES SHOWN ON REFLECTED CEILING PLANS (RCPs) ARE FOR COORD. PURPOSES ONLY. REFER TO MECH., ELEC., & PLUMBING/FIRE PROTECTION DWGS. FOR ALL PRICING TAKE-OFFS. COORD. W/ OWNER/ARCHITECT IN FIELD.
- LOCATE ACCESS PANELS AS INDICATED ON DWGS. FOR ACCESS PANELS NOT SHOWN BUT REQ'D. BY PROVISIONS OF THE CONTRACT DOCUMENTS, LOCATE IN ACCORDANCE W/ APPLICABLE CODES. SUBMIT PROPOSED LOCATIONS TO THE ARCHITECT FOR REVIEW & ACCEPTANCE PRIOR TO INSTALLATION. ALL CEILING ACCESS PANELS ARE TO BE PROVIDED & INSTALLED TO MAINTAIN ALL REQ'D. FIRE RATINGS.
- CONTRACTOR IS TO SUBMIT PROPOSED LOCATIONS TO THE ARCHITECT FOR REVIEW & ACCEPTANCE PRIOR TO INSTALLATION FOR ANY & ALL CEILING MTD. FIXTURES OR DEVICES NOT SHOWN BUT REQ'D. BY PROVISIONS OF THE CONTRACT DOCUMENTS.



- K. IN ALL CORRIDORS:
- ALIGN ALL RECESSED CAN LIGHT FIXTURES W/ 4" OF CORRIDOR & DIM. AS SHOWN ON RCP.
  - WHERE DIFFUSERS & GRILLES OCCUR, ALIGN W/ 4" OF CORRIDOR & CENTER BETWEEN LIGHT FIXTURES.
  - WHERE ALL OTHER ELEC. DEVICES OCCUR IN CEILINGS, CENTER BETWEEN ADJACENT LIGHT FIXTURES, DIFFUSERS, GRILLES, ETC. WHERE POSSIBLE.
  - WHERE SPRINKLER HEADS OCCUR, ALIGN W/ 4" OF CORRIDOR & SPACE AS NECESSARY TO ACHIEVE REQUIRED COVERAGE.



- L. WHERE DIFFUSERS & GRILLES OCCUR TIGHT TO ROOM CORNERS, DIM. AS SHOWN IN ALL CONDITIONS WHERE POSSIBLE.
- NOTE:**  
SEE ELEC. DWGS. FOR LIGHT FIXTURE INFORMATION.
- SEE MECH. DWGS. FOR HVAC INFORMATION.
- REFER TO EXT. ELEVATIONS FOR ADDITIONAL LIGHTING & MECH. REQ.



- M. WHERE DIFFUSERS & GRILLES OCCUR AT DOORWAYS, ALIGN AT CENTERLINE OF DOORWAY AS SHOWN. POSITION IN OTHER DIRECTION AS DIM. ON RCP. COORD. W/ ARCHITECT IN FIELD U.N.O.

- N. ALL TYPICAL CEILING HEADERS @ CEILING TRANSITIONS ARE TO BE 8'-10" ABOVE FINISHED FLOOR. (4) A103

- O. ALL INSTANCES OF RECESSED CAN LIGHTING SHALL BE CENTERED ON A CEILING TILE.

- P. ALL INTERIOR WALLS TO EXTEND MIN. 1'-0" ABOVE THE HEIGHT OF THE CEILING ABOVE FINISH FLOOR.

- Q. INSULATION SHALL BE PLACED ABOVE THE CEILINGS IN THE OFFICE ADMIN AREA.

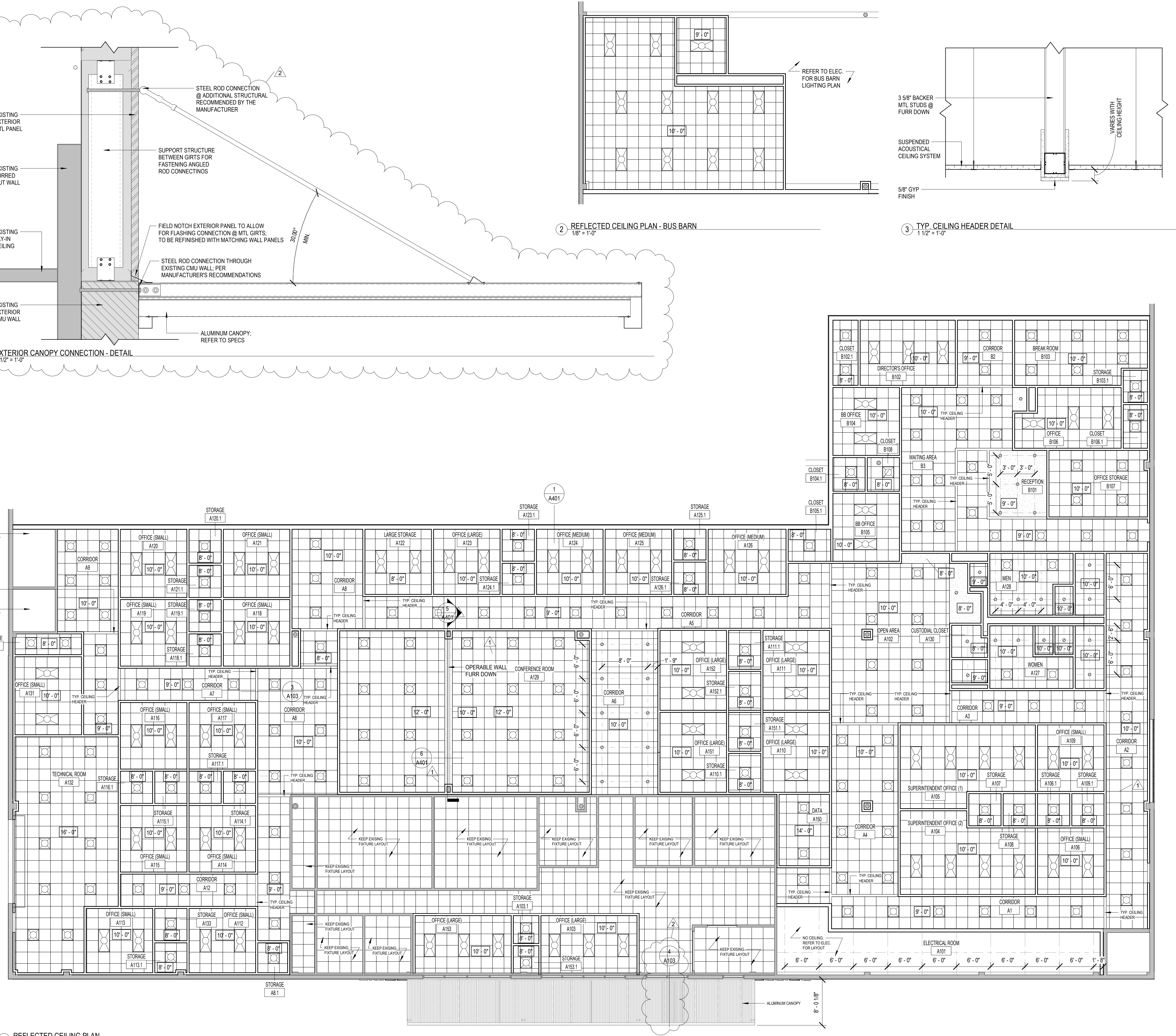
## RCP LEGEND

### CEILING TYPE LEGEND:

- |  |  |  |                               |
|--|--|--|-------------------------------|
|  | ACOUS. PANEL CLNG ASY. - SUSP. FROM STRUCT.                |  | EXPOSED STRUCTURE. NO CEILING |
|  | GYP. BD. CLG. OR SOFFIT ASY. - RIGIDLY ATTACHED TO STRUCT. |  |                               |

### CEILING SYMBOL LEGEND:

- |  |                           |  |                                 |
|--|---------------------------|--|---------------------------------|
|  | RECESSED FIXTURE          |  | RECESSED LINEAR SLOTLIGHT       |
|  | SURFACE MTD. FIXTURE      |  | SURFACE MTD. ADJUSTABLE FIXTURE |
|  | SURFACE MTD. LED FIXTURE  |  | EXIT SIGN                       |
|  | PENDANT FIXTURE           |  | HVAC SUPPLY REGISTER            |
|  | PENDANT DOWNLIGHT FIXTURE |  | HVAC RETURN REGISTER            |
|  | WALL MTD. FIXTURE         |  | HVAC EXHAUST REGISTER           |
|  | 2X2 RECESSED FIXTURE      |  | CEILING ACCESS PANEL            |
|  | 2X4 RECESSED FIXTURE      |  | P-PANEL FOR PLUM.               |
|  | SURFACE MTD. FIXTURE      |  | M-PANEL FOR MECH.               |
|  | STRIP LIGHT FIXTURE       |  | CEILING FAN                     |



1 REFLECTED CEILING PLAN  
1/8" = 1'-0"