

**Cancer Treatment Center 2022  
South Central Regional Medical Center  
Laurel, MS**

**From: Foil Wyatt Architects & Planners, PLLC  
1510 North State Street, Suite 200  
Jackson, MS 39202**

**Addendum No. 2**  
October 3, 2022

This addendum forms a part of the contract documents and modifies the original plans and specifications dated June 10, 2022.

**Specification:**

**Item 2.1: Section 08200 – Wood Doors**

Change: Paragraph 2.2, C

To: “Face veneer shall be R/C Select White Birch, prefinished from the factory, color as selected by Architect from manufacturer’s available color selection.”

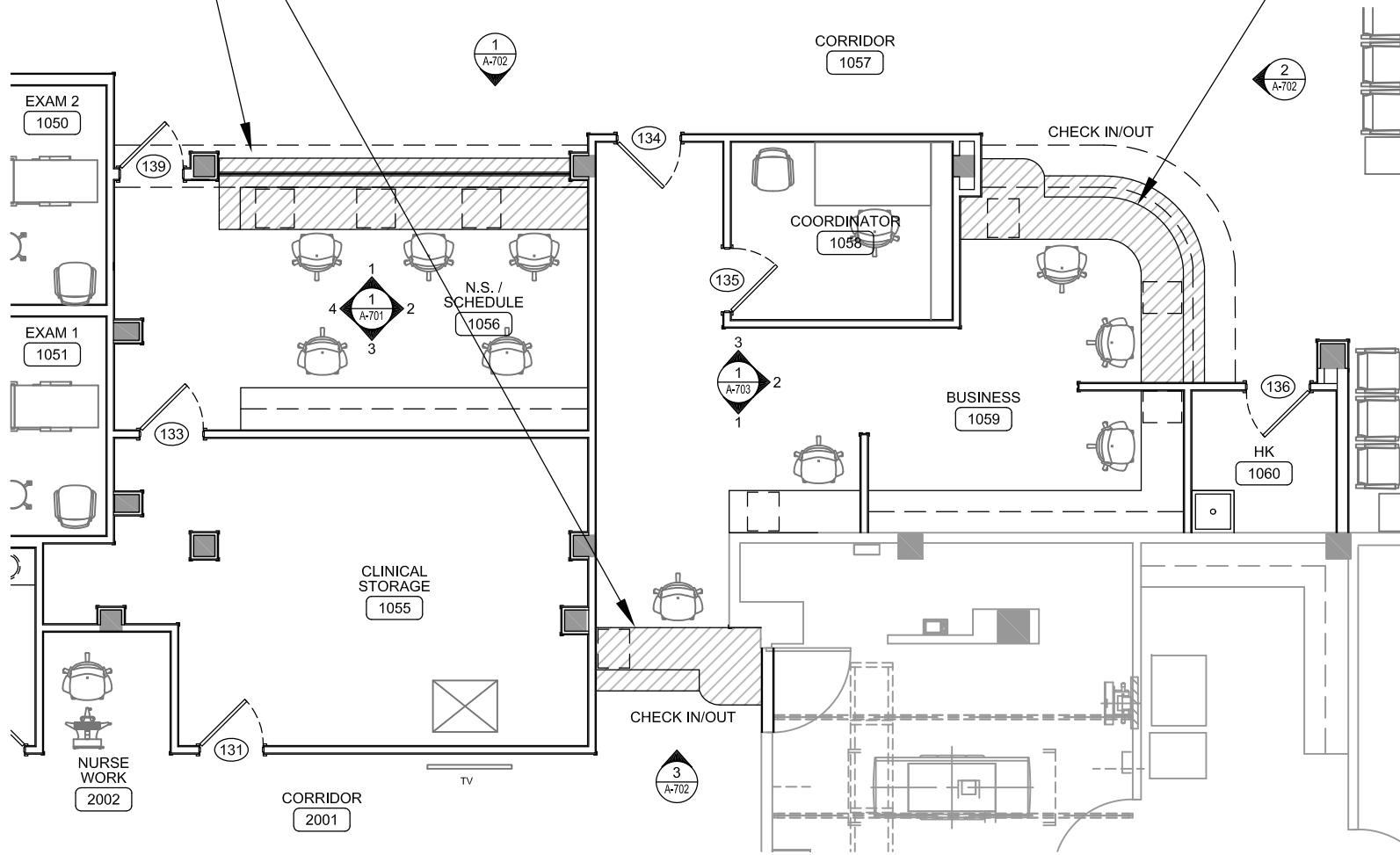
**Drawings:**

**Item 2.2: Sheet A-603, A-801, I-101**

Note: See Sheet AD02 which clarifies Solid Surface thickness & Quartz locations.

**End of Addendum No. 2**

ALL COUNTER TOPS ARE 1/2" SOLID SURFACE W/ BUILT-UP EDGES.  
 THESE 3 LOCATIONS ARE TO BE QUARTZ AS SPECIFIED. MANUFACTURER  
 & COLOR TO BE SELECTED.



**FoillWatt**  
 Architects & Planners, PLLC  
 SUITE 400  
 1501 NORTH STATE STREET  
 MEMPHIS, TN 38103  
 TELEPHONE: (901) 522-5071  
 FAX: (901) 522-5078  
 EMAIL: foillwatt@foillwatt.com

**NEW CANCER TREATMENT CENTER**  
**SOUTH CENTRAL REGIONAL MEDICAL CENTER**  
 LAUREL, MISSISSIPPI

project no.  
 1608-19  
 date  
 OCT. 3, 2022

**AD02**  
 SOLID SURFACE  
 CLARIFICATION