

May 20, 2022

ADDENDUM NUMBER THREE (3)

Project: JHCH Mobile Unit Building
Jackson Hinds Comprehensive Health
PN: 22027

FROM: Dean Architecture
661 Sunnybrook Road, Suite 140
Ridgeland, MS 39157
(601) 939-7717

The following additions, changes, clarifications and/or substitutions to the Project Drawings as indicated, are hereby made a part of the Contract Documents. Acknowledge receipt of this Addendum by inserting its number and date in the Proposal Form where indicated.

Clarifications

Item #1: Refer to Addendum #2 Clarification item #1, remove this item and replace with the following:

- A. Prefinished metal wall liner panels required to be installed on interior of both sides of dividing wall along column line "C" and exterior walls in Rooms 106 and 107. Wall panels to extend up to 8'-0" A.F.F. per Sections 2 and 3/A301
- B. Prefinished metal liner panel also required in Foyer A100 on wall separating Foyer from Mobile Unit Storage 107 along column line "C" per Section 3/A301.

Electrical

SEE ATTACHED ELECTRICAL ITEMS PROVIDED BY THE POWER SOURCE

END OF ADDENDUM NUMBER THREE (3)

Dean and Dean/Associates
architects p.a.


Kenneth A. Oubre, AIA, Principal



PLEASE ATTACH THIS ADDENDUM TO THE INSIDE FRONT COVER OF EACH SET OF SPECIFICATIONS.

The Power Source, PLLC

Consulting Engineers

305 Highway 51
Ridgeland, MS 39157

Telephone: (601) 605-4820
Fax: (601) 605-4875

Addendum #3

Date: 5/20/2022

To: Mr. Brad Heath

From: Chris Green

Subject: Addendum -

See attached revised Electrical sheets E000, E200 and E300 Dated May 20, 2022

1. Added HDMI cabling and power to TV locations.
2. Added security camera locations.
3. Added data outlets locations.

PANEL HA			LOCATION: ELECTRICAL ROOM VOLT: 480Y/277V, 3Ø, 4W BUS: 200A	LUG LOCATION: MAIN BUS MOUNTING:	BOTTOM FEED 200A MAIN BREAKER SURFACE			PANELBOARD AIC RATING (A): 10,000				
CIRCUIT NO.	BREAKER	POLES	DESCRIPTION	PHASE LOAD (KVA)			DESCRIPTION	BREAKER	POLES	CIRCUIT NO.		
				A	B	C						
1	15	3	EF-3	1.3	0.0							
3	-	-	-		1.3	0.0		SPARE	20	1		
5	-	-	-				1.3	0.0	SPARE	20		
7	30	3	AC-1	5.0	0.0			SPARE	20	1		
9	-	-	-		5.0	0.0		SPARE	20	1		
11	-	-	-				5.0	0.0	SPARE	20		
13	40	3	AC-2 (ALTERNATE #2)	7.2	0.0			SPARE	20	1		
15	-	-	-		7.2	0.0		SPARE	20	1		
17	-	-	-				7.2	0.0	SPARE	20		
19	20	1	SPARE	0.0	0.0			SPARE	20	1		
21	20	1	SPARE		0.0	0.0		SPARE	20	1		
23	20	1	SPARE			0.0	0.0	SPARE	20	1		
25	20	1	SPARE	0.0	0.0			SPARE	20	1		
27	20	1	SPARE					SPARE	20	1		
29	20	1	SPARE				0.0	0.0	SPARE	20		
31	20	1	SPARE	0.0	0.0			SPARE	20	1		
33	20	1	SPARE		0.0	0.0		SPARE	20	1		
35	20	1	SPARE				0.0	0.0	SPARE	20		
37	20	1	SPARE	0.0	0.0			SPARE	20	1		
39	20	1	SPARE		0.0	23.6		SPARE	125	2		
41	20	1	SPARE				0.0	24.0	PANEL "LA"	2		
TOTAL				13.6	37.2					42		

PANEL LA			LOCATION: ELECTRICAL ROOM VOLT: 240/120V, 1Ø, 3W BUS: 225A	LUG LOCATION: MAIN BUS MOUNTING:	BOTTOM FEED 225A MAIN BREAKER SURFACE			PANELBOARD AIC RATING (A): 10,000				
CIRCUIT NO.	BREAKER	POLES	DESCRIPTION	PHASE LOAD (KVA)			DESCRIPTION	BREAKER	POLES	CIRCUIT NO.		
				L1	L2	L3						
1	20	1	LTS - (OFFICE, OFFICE BAO, HAZ, TOILET, FOYER)	1.5	0.4		REC - (OFFICE)	20	1	2		
3	20	1	LTS - (MOBILE UNIT STORAGE)		1.1	1.0	REC - (OFFICE - COPIER)	20	1	4		
5	20	1	LTS - (MOBILE UNIT STORAGE)	0.6	0.4		REC - (GENERAL STORAGE - TDBB)	20	1	6		
7	20	1	CONTACTOR "C"		0.5	0.4	REC - (GENERAL STORAGE - TDBB)	20	1	8		
9	20	1	LTS - (EXTERIOR BUILDING LIGHTS)	0.3	0.5		REC - (GENERAL STORAGE - TDBB)	20	1	10		
11	20	1	REC - (OFFICE, OFFICE)		1.4	0.5	REC - (GENERAL STORAGE)	20	1	12		
13	20	1	REC - (FOYER - TIMECLOCK)	0.5	0.5		UH-01	20	1	14		
15	20	1	PROVISIONS FOR DOOR EQUIPMENT		0.5	0.5	UH-02	20	1	16		
17	20	1	REC - (EXTERIOR)	1.3	3.0		WH-1	35	2	18		
19	20	1	MOBILE UNIT STORAGE - OVERHEAD DOOR		0.9	3.0				20		
21	20	1	MOBILE UNIT STORAGE - OVERHEAD DOOR	0.9	0.5		EF-1	15	1	22		
23	20	1	REC - (MOBILE UNIT STORAGE)		0.5	0.5	PROVISIONS FOR HAND DRYER	20* </td <td>1</td> <td>24</td>	1	24		
25	50	2	MOBILE UNIT STORAGE - XXXXXXXXX	4.0	0.0		SPARE	20	1	26		
27	-	-	-		4.0	0.0	SPARE	20	1	28		
29	20	1	REC - (MOBILE UNIT STORAGE)	0.5	0.0		SPARE	20	1	30		
31	20	1	REC - (MOBILE UNIT STORAGE)		0.4	0.0	SPARE	20	1	32		
33	50	2	MO									



1
E000

COMMUNICATIONS DIAGRAM

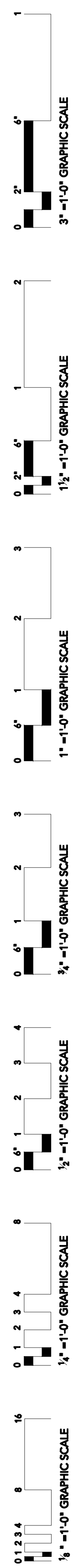
Scale: NONE



Project No. : 22027
Date: APRIL 11, 2022
Drawn: CTB
Checked: CLG
Revisions: 1 ADDENDUM #1

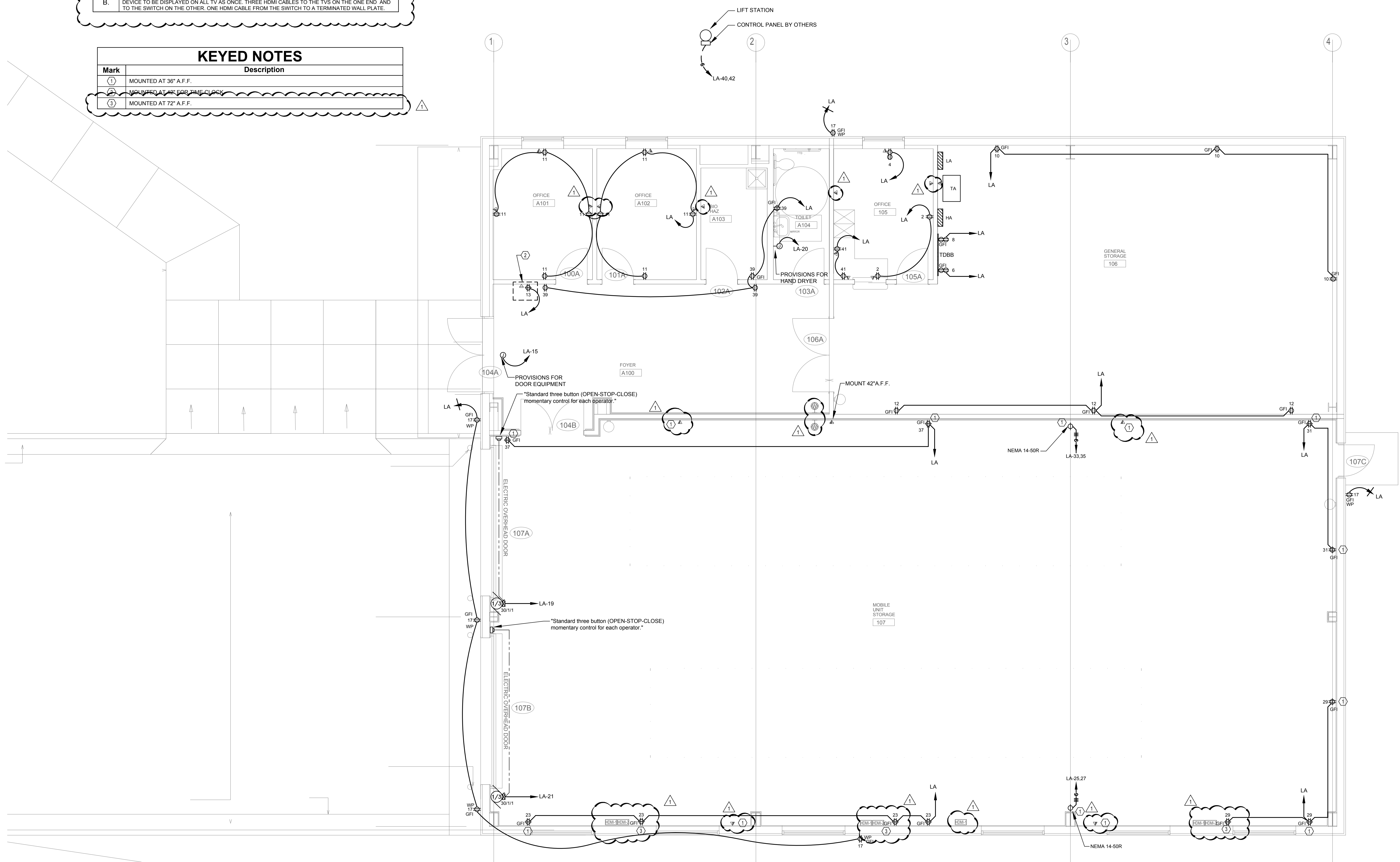
Sheet Number:

E 000

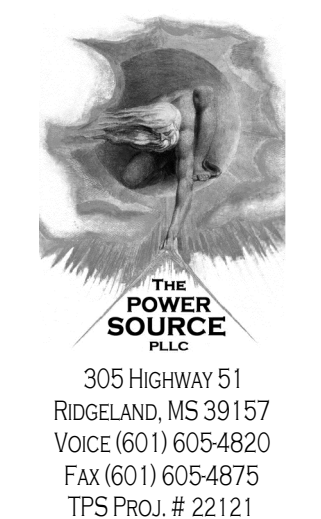


GENERAL NOTES	
No.	Description
A.	THREE HDMI CABLES TO BE TERMINATED UNDER EACH TV ON WALL PLATE.
B.	FOUR HDMI CABLE RUNS TO A CENTRAL LOCATION TO CONNECT TO A HDMI SWITCH MATRIX TO ALLOW A DEVICE TO BE DISPLAYED ON ALL TV AS ONCE. THREE HDMI CABLES TO THE TVS ON THE ONE END AND TO THE SWITCH ON THE OTHER. ONE HDMI CABLE FROM THE SWITCH TO A TERMINATED WALL PLATE.

KEYED NOTES	
Mark	Description
①	MOUNTED AT 36" A.F.F.
②	MOUNTED AT 48" FOR THE CLOCK
③	MOUNTED AT 72" A.F.F.



1 POWER PLAN
E200 Scale: 1/4" = 1'-0"



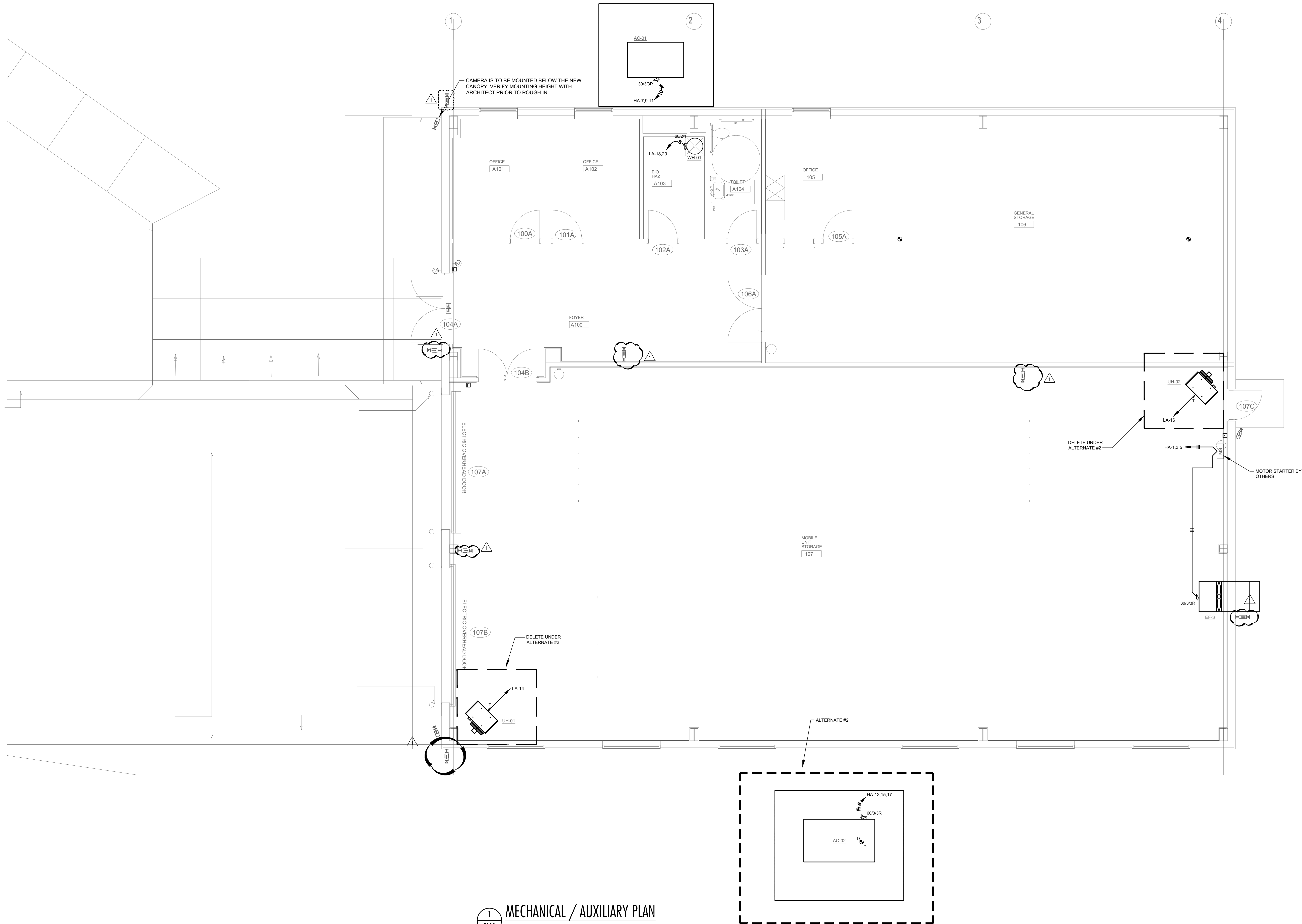
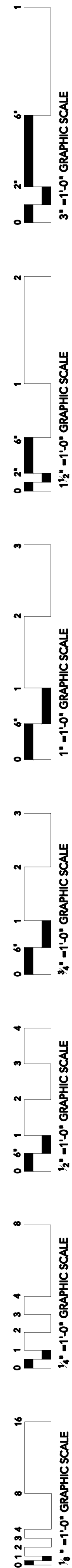
DEAN
ARCHITECTURE
GEDDIE | GRANT | OUBRE

641 Sunnybrook, Ste 140
Ridgeland, MS 39157
601.939.7717
deandean.com

Project No.: 22027
Date: APRIL 11, 2022
Drawn: CTB
Checked: CLG
Revisions: ADDENDUM #1

JACKSON HINDS COMPREHENSIVE HEALTH
MOBILE UNIT BUILDING
NORTHSIDE DRIVE CAMPUS
JACKSON, MISSISSIPPI

Sheet Number:
E200



1 MECHANICAL / AUXILIARY PLAN
E300 Scale: 1/4" = 1'-0"

THE POWER SOURCE
305 HIGHWAY 51
RIDGELAND, MS 39157
VOICE (601) 605-4820
FAX (601) 605-4875
TPS PROJ. # 22121

DEAN
ARCHITECTURE
GEDDIE | GRANT | OUBRE
661 Sunnybrook, Ste 140
Ridgeland, MS 39157
601.939.7717
deandean.com

Project No.: 22027
Date: APRIL 11, 2022
Drawn: CTB
Checked: CLG
Revisions: ADDENDUM #1

JACKSON HINDS COMPREHENSIVE HEALTH
MOBILE UNIT BUILDING
NORTHSIDE DRIVE CAMPUS
JACKSON, MISSISSIPPI

Sheet Number:
E300