

SHAHER | ZAHNER | ZAHNER

OFFICE OF ARCHITECTURE

May 12, 2022

GS# 411-125 Main Campus Multipurpose Building

East Mississippi State Hospital

Meridian, MS

Addendum No. 2

This Addendum forms part of the Contract Documents for the above referenced project. All other requirements of the original Contract Documents shall remain in effect except as specifically modified in this Addendum. Bidder is to acknowledge receipt of this Addendum with their bid proposal. Failure to do so may subject the Bidder to disqualification. This Addendum is issued to all known Plan Holders.

1. Specifications:

- a. DELETE Section 05 73 00 Ornamental Aluminum Railing, ADD Section 32 31 00 Aluminum Fencing and Gates. Clarifies fencing at mechanical enclosures.

2. Drawings:

- a. Sheet S102, REPLACE with S102R, attached. Clarifies joist information.
- b. Sheet S103, REPLACE with S103R, attached. Clarifies designations.
- c. Sheet A402, Details 2, 3, 4, 6, 7, 8: Revise style of aluminum fencing and gates to commercial grade prefinished aluminum fencing and gates with alternating flush/flat top panel in lieu of 'x' design panels.

3. Substitution Requests: The following manufacturers are considered "Acceptable Manufacturers" as defined in the Contract Documents –

| Section | Item | Manufacturer |
|----------|---------------------------|------------------------|
| 09 67 00 | Fluid applied flooring | Stonhard – Stontec ERF |
| 11 66 23 | Basketball equipment | Porter Athletic |
| 11 66 33 | Gymnasium Wall Pads | Porter Athletic |
| 11 66 53 | Roll Up Gymnasium Divider | Porter Athletic |
| | | |
| | | |

Approval of a Manufacturer or product as an "equal" does not in any way alter the Contract Documents. Any approved manufacturer must accommodate construction details, required finishes, owner's specific requirements, adjacent materials, etc. Any additional materials or components required by the "approved equal" for proper installation for the given conditions are the responsibility of the Contractor. Approval of a Manufacturer also shall not cause an up-charge for the desired finish or limit the choices of finishes, colors, materials, etc. Field measurement of existing conditions for the installation of items is the responsibility of the Contractor.

SHAFAER | ZAHNER | ZAHNER

OFFICE OF ARCHITECTURE

Contents: This addendum consists of **8 (8 ½" x 11") sheets and 2 (24" x 36") sheets.**

End of Addendum No. 2 for: GS# 411-125 Main Campus Multipurpose Building



SECTION 32 31 00
ALUMINUM FENCING AND GATES

PART 1 GENERAL

1.1 SECTION INCLUDES

- A. Commercial Fencing
- B. Post Caps
- C. Gates.
- D. Gate Hardware.
- E. Accessories.

1.2 REFERENCES

- A. AAMA 2604 - Performance Requirements and Test Procedures for High-Performance Organic Coatings on Aluminum Extrusions and Panels
- B. AAMA 609 and AAMA 610.02 - Cleaning and Maintenance Guide for Architecturally Finished Aluminum
- C. ASTM B 209 - Standard Specification for Aluminum and Aluminum-Alloy Sheet and Plate.
- D. ASTM B 221 - Standard Specification for Aluminum and Aluminum-Alloy Extruded Bars, Rods, Wire, Profiles, and Tubes
- E. ASTM B 247 - Standard Specification for Aluminum and Aluminum Die Forgings, Hand Forgings and rolled Ring Forgings.
- F. ASTM B 429 - Standard Specification for Aluminum-Alloy Extruded Structural Pipe and Tube.

1.3 SUBMITTALS

- A. Submit under provisions of Division 1.
- B. Product Data: Manufacturer's data sheets on each product to be used, including:
 - 1. Preparation instructions and recommendations.
 - 2. Details of material and construction.
 - 3. Storage and handling requirements and recommendations.
 - 4. Installation methods and requirements.
- C. Shop Drawings: Submit shop drawings for fabrication and installation of ornamental metalwork. Include plans, elevations and detail sections. Indicate materials, methods, finishes and types of joinery, fasteners, anchorages and accessory items.
- D. Selection Samples: For each finish product specified, two complete sets of color chips representing manufacturer's full range of available colors and patterns.
- E. Verification Samples: For each finish product specified, two samples, minimum size 6 inches (150 mm), representing actual product, color, and patterns.
- F. Manufacturer's Certificates: Certify products meet or exceed specified requirements.

- G. Closeout Submittals: Provide manufacturer's maintenance instructions that include recommendations for periodic cleaning and maintenance of all components.

1.4 QUALITY ASSURANCE

- A. Manufacturer Qualifications: Minimum 10 years documented experience manufacturing products specified in this section.
- B. Installers Qualifications: Minimum 3 years documented experience installing systems specified in this section.

1.5 DELIVERY, STORAGE, AND HANDLING

- A. Handle and store materials in accordance with manufacturers instructions and to prevent damage.
- B. Store products in manufacturer's unopened, properly labeled, original packaging until ready for installation.
- C. Store components to avoid damage from moisture, abrasion, and other construction activities.

1.6 PROJECT CONDITIONS

- A. Maintain environmental conditions (temperature, humidity, and ventilation) within limits recommended by manufacturer for optimum results. Do not install products under environmental conditions outside manufacturer's absolute limits.

1.7 WARRANTY

- A. Provide with manufacturer's limited lifetime warranty.

PART 2 PRODUCTS

2.1 MANUFACTURERS

- A. Basis of Design - Key-Link Fencing & Railing and Superior Plastic Products, which is located at: 260 Jalyn Dr.; New Holland, PA 17557; Toll Free Tel: 800-633-7093; Fax: 717-355-7129; Email: [request info \(aalvarez@superiorplastic.net\)](mailto:aalvarez@superiorplastic.net); Web: <https://superiorplasticproducts.com> | <http://KeyLinkOnline.com>
 - 1. Prefinished Aluminum Fencing and Gates
- B. Ameristar Echelon Plus Commercial Aluminum Ornamental Fencing, ameristarperimeter.com, Phone: 888-333-3422
 - 1. Echelon Plus Panel system, Majestic
- C. Superior Aluminum Products, superioraluminum.com, Phone: 800-548-8656
 - 1. Series 7P Aluminum Picket Fence
- D. Equal Product per Division 1 requirements.

2.2 MATERIALS

- A. Aluminum: Alloy and temper recommended by aluminum producer and finisher for type of use and finish indicated, and with not less than strength and durability properties of alloy and temper designated below for each aluminum form required.
 - 1. Extruded Bar and Tube: ASTM B 221 (ASTM B 221 M), alloy 6063T5/ T52.
 - 2. Extruded Structural Pipe and Tube: ASTM B 429, alloy 6063T832.

3. Drawn Seamless Tube: ASTM B 210 (ASTM B 210M), alloy 6063T832.
4. Plate and Sheet: ASTM B 209 (ASTM B 209M), alloy 6061T6.
5. Die and Hand Forgings: ASTM B Standard Specification for Aluminum and Aluminum-Alloy Sheet and Plate Standard Specification for Aluminum and Aluminum-Alloy Sheet and Plate Standard Specification for Aluminum and Aluminum-Alloy Sheet and Plate 247 (ASTM B 247 M), alloy 6061T6.

2.3 COMMERCIAL FENCING

- A. Model: 421132
 1. Fence Height: 72 inches.
 - a. Post Size: 2-1/2 inches by 2-1/2 inches square.
 - b. Post Height: Fence Height 30 inches plus.
 2. Horizontal Fence Rails: 1.25 inches by 1.5 inches.
 3. Vertical Pickets: 3/4 inch by 3/4 inch.
 4. Picket Spacing: 3.56 inches.
 5. Quad or Spear Finial Options: None
 6. Ring Option: No Rings.
 7. Short Picket Option: No Short Pickets.
 8. Arched Top Gate: NO
 9. Racking: 38 inches over 8 foot section.
 10. Convex or Concave Gate: No.
- B. Accessories: Provide the following accessories as required for the installation.
 1. Concrete Bracket: 2-1/2 inch stainless steel post brackets.
 2. Swivel Wall Mount: Color
 - a. Black
 - b. Bronze
 - c. White
 3. Post Stiffener: 2-1/2 inch square post
 4. Wall Mount
 - a. Black
 - b. Bronze
 - c. White
- C. Optional Features:
 1. Caps:
 - a. 2-1/2 inch Square Flat Cap
 2. Finials:
 - a. Quad

2.4 GATES

- A. Fence Gates: Match style and grade of fencing system.
 1. Nominal length: see Drawings
- B. Gate Hardware
 1. Hinges:
 - a. TruClose (Heavy Duty) Multi-Adjustable Hinge
 - 1) Maximum Load Capacity: 700 lbs.
 - 2) Horizontal and Vertical Adjustment: Up to 3/4"
 - 3) Self Closing Gate Rating: 132 lbs.
 - 4) Dimensions: 5 inches high by 7 inches wide
 - 5) Gate Gap Variance: From 5/8 inch to 1-3/8 inches
 - 6) Ideal Gate Gap: 1 inch
 - 7) Construction: Molded polymer with adjustable stainless steel torsion spring with side legs that wrap around fence post and edge of gate for

- added strength.
 - 8) Color:
 - a) Black
 - 2. Lockable Gate Latch (Deluxe)
 - a. Model #LLDAB-K
 - 1) Key Lockable with re-keyable 6-pin lock.
 - 2) Operates/locks both sides
 - 3) Color Black
 - 4) Gap variance 3/8 inch to 1-1/4 inch
 - 5) Post size 1-1/2 inches to 6 inches
 - b. Model #LLDABW-K
 - 1) Key Lockable with re-keyable 6-pin lock.
 - 2) Operates/locks both sides
 - 3) Color White
 - 4) Gap variance 3/8 inch to 1-1/4 inch
 - 5) Post size 1-1/2 inches to 6 inches
- C. Drop Bolt:
 - 1. Lokk Bolt Key Lockable Security Drop Bolt
 - a. Model #LB118BX-KSA: 18 inches Black
 - b. Model #LB118BXW-KSA 8 inches White
 - c. Model #LB124BX-KSA 24 inches Black
 - d. Model #LB124BXW-KSA 24 inches White
 - 2. Heavy Duty Drop Pin Plate:
 - a. Model #LBBPBG
 - 1) Molded, rust-free plate
 - 2) Color Black
- D. Gate Handle: Fits all gates, left /right openings.
 - 1. Model #LL3GH
 - a. Color Black

2.5 ACCESSORIES

- A. Post Caps and Trim: Cap all hollow extrusions with aluminum caps and trim as selected by the Architect from the manufacturer's available selections. Provide colors and textures matching railing types selected.
- B. Stainless Steel Post Bracket: All stainless steel heavy duty post bracket facilitates installations on almost any surface, especially concrete, when properly installed.
 - 1. Size:
 - a. 2 inches
 - b. 2-1/2 inches
- C. Swivel Wall Mount
 - 1. Color
 - a. Black
 - b. Bronze
 - c. White
- D. Post Stiffener
 - 1. Size:
 - a. 2 inches
 - b. 2-1/2 inches
- E. Wall Mount
 - 1. Black

2. Bronze
3. White

2.6 FINISH

- A. Finish railing system components after fabrication as follows:
 1. Standard Colors complying with AAMA 2604 powder coatings formulated with super durable or modified polyester resins with colors as selected by the Architect.

PART 3 EXECUTION

3.1 EXAMINATION

- A. Do not begin installation until conditions have been properly prepared.
- B. Verification of Conditions: Examine locations where fencing is to be installed for any conditions detrimental to the proper and timely completion of the work.
- C. If preparation is the responsibility of another installer, notify Architect of unsatisfactory preparation before proceeding.

3.2 PREPARATION

- A. Clean surfaces thoroughly prior to installation.
- B. Prepare the grade and remove surface irregularities, if any, which may cause interference with the installation of the fence.
- C. Prepare surfaces using the methods recommended by the manufacturer for achieving the best result for the substrate under the project conditions.

3.3 INSTALLATION

- A. Install in accordance with manufacturer's instructions.
- B. Set posts and gate posts for gate openings as indicated on the Drawings.
- C. Center and align posts, place concrete around posts and vibrate or tamp for consolidation. Recheck vertical and top alignment of posts, and make necessary corrections.
- D. Install gates plumb, level, and secure for full opening without interference. For double gates, install drop rod. Adjust hardware for smooth operation.

3.4 CLEANING

- A. Touch-up, repair, or replace damaged products before Substantial Completion.
- B. Clean the work according to manufacturer's written instructions. Post hole excavations shall be scattered uniformly away from the posts. Clean fence with mild household detergent and rinse well with clean water. Remove mortar from exposed posts using a 10 percent solution of muriatic acid followed immediately by several rinses with clean water.

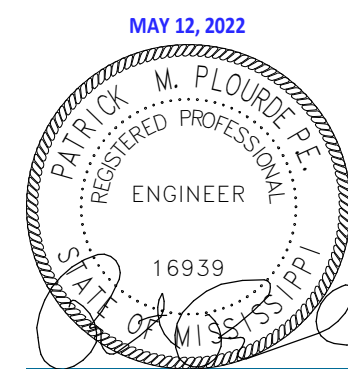
3.5 PROTECTION

- A. Protect installed products until completion of project.
- B. Touch-up, repair or replace damaged products before Substantial Completion.

END OF SECTION

GS#411-125 MAIN CAMPUS MULTIPURPOSE BUILDING

EAST MISSISSIPPI STATE HOSPITAL - MERIDIAN, MS



SHAHER
ZAHNER
ZAHNER

OFFICE OF ARCHITECTURE
510 UNIVERSITY DRIVE
STARKVILLE, MISSISSIPPI 39759
szzarch.com T(662) 323-1628

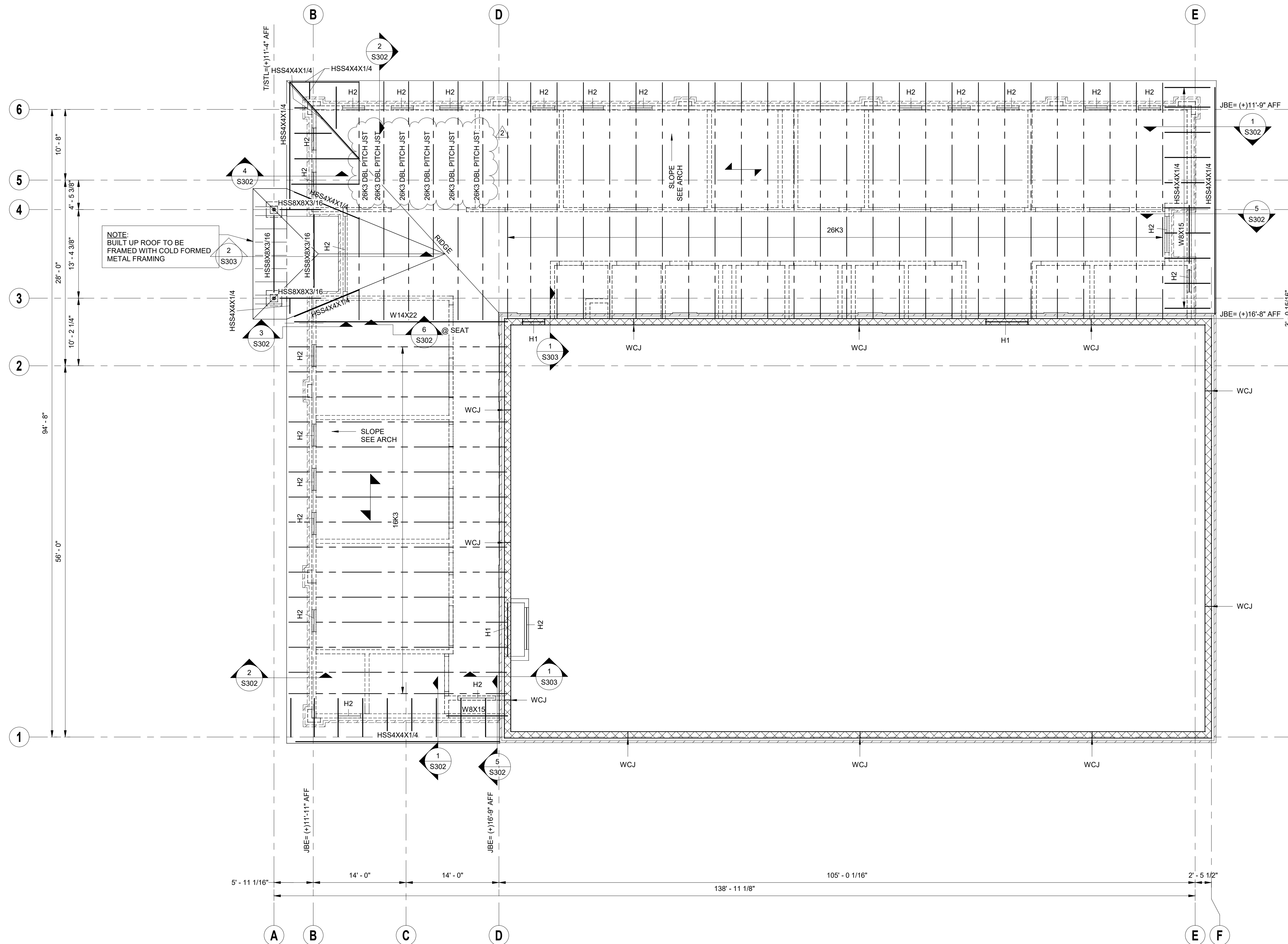
SHEET S102

LOW ROOF
FRAMING
PLAN

DATE: MAY 12, 2022
SZZARCH# #2114
DRAWN BY: ABS
CHECKED BY: JCF

REVISIONS:
ADDENDUM #2

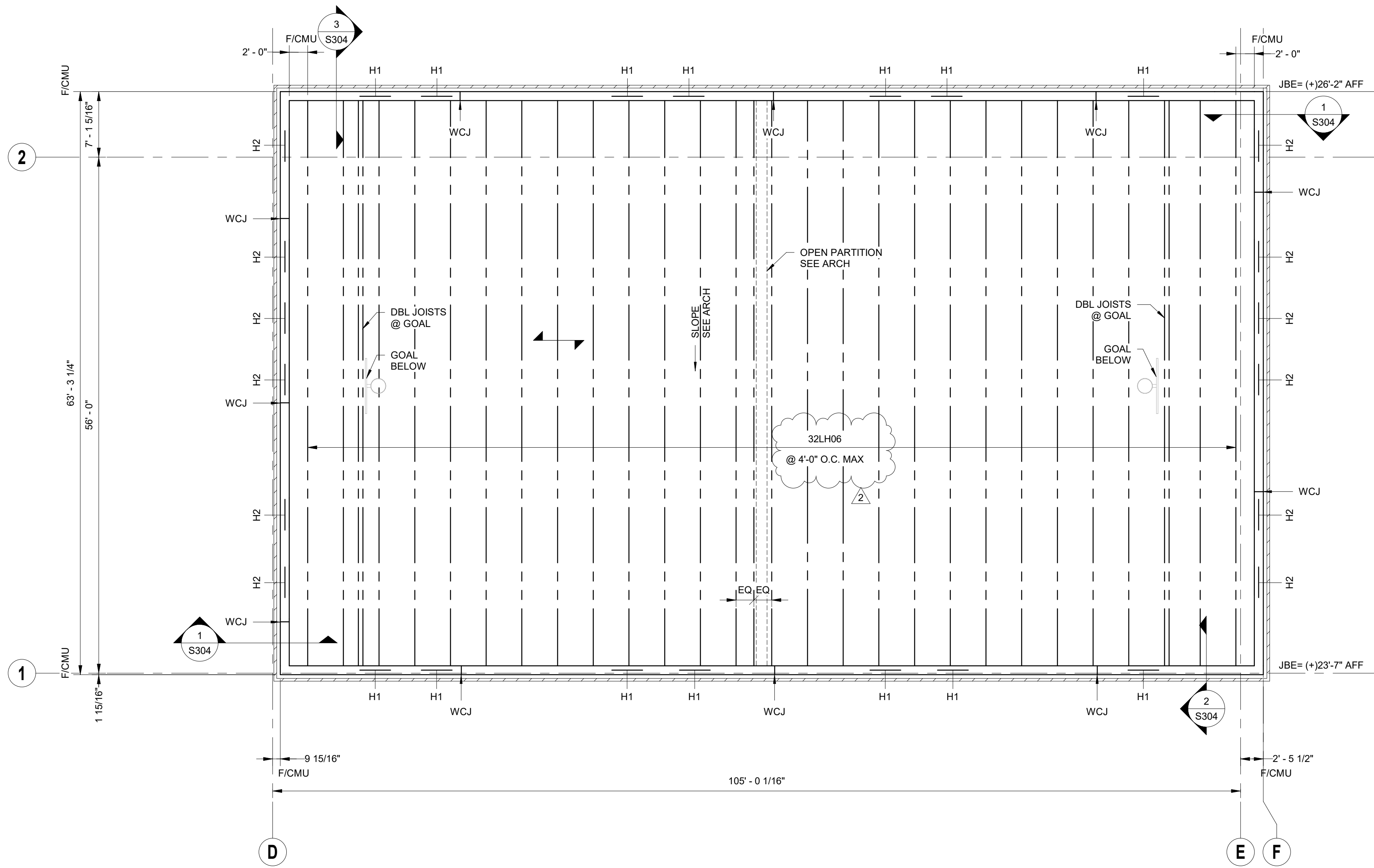
LIVE OAK
ENGINEERING
2509 7th AVENUE SOUTH
BIRMINGHAM, AL 35233
205.637.3115



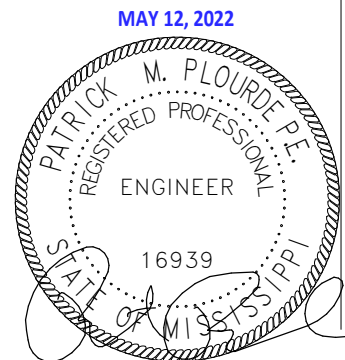
1 LOW ROOF FRAMING PLAN
1/8" = 1'-0"

GS#411-125 MAIN CAMPUS MULTIPURPOSE BUILDING

EAST MISSISSIPPI STATE HOSPITAL - MERIDIAN, MS



1 HIGH ROOF FRAMING PLAN
1/8" = 1'-0"



SHAHER
ZAHNER
ZAHNER

OFFICE OF ARCHITECTURE
510 UNIVERSITY DRIVE
STARKVILLE, MISSISSIPPI 39759
szzarch.com T(662) 323-1628

SHEET S103

HIGH ROOF
FRAMING
PLAN

DATE: MAY 12, 2022
SZZARCH# #2114
DRAWN BY: ABS
CHECKED BY: JCF

REVISIONS:
ADDENDUM #2