



March 09 2022
Soundbooth Relocation for Lakeland Medical Building
University of Mississippi Medical Center

ADDENDUM NO. 03

NOTICE TO ALL DOCUMENT HOLDERS:

The following additions, deletions, changes and clarifications to the drawings and specifications are to be included as part of the Contract Documents.

DRAWINGS:

ITEM NO. 01 SHEET M101. Replace sheet with the attached.

The Soundbooth Experts, the company installing the soundbooth, will only erect the soundbooth and is not responsible for re-connecting/hardwiring the electrical, mechanical, or sprinkler system to the existing MEP. This will need to be handled and coordinated by GC.

Below are the contacts for the Sound Booth Experts if more information is needed:

David Kerns dave@thesoundroomexperts.com

Alex Carlton alex@thesoundroomexperts.com

Encl:

Drawings (1 sheet- 24x 36): M101 4th Floor Mechanical Plan

cc: All Document Holders

CODE REVIEW	
DESIGN CODE	2012 INTERNATIONAL CODE COUNCIL (ICC)

DRAWING INDEX - MECHANICAL	
Sheet Number	Sheet Name
M101	4th FLOOR MECHANICAL PLAN
M201	MECHANICAL SCHEDULES & DETAILS



LAKELAND
MEDICAL
BLDG-
SOUND
BOOTH
RELOCATION
AND
RENOVATIONS

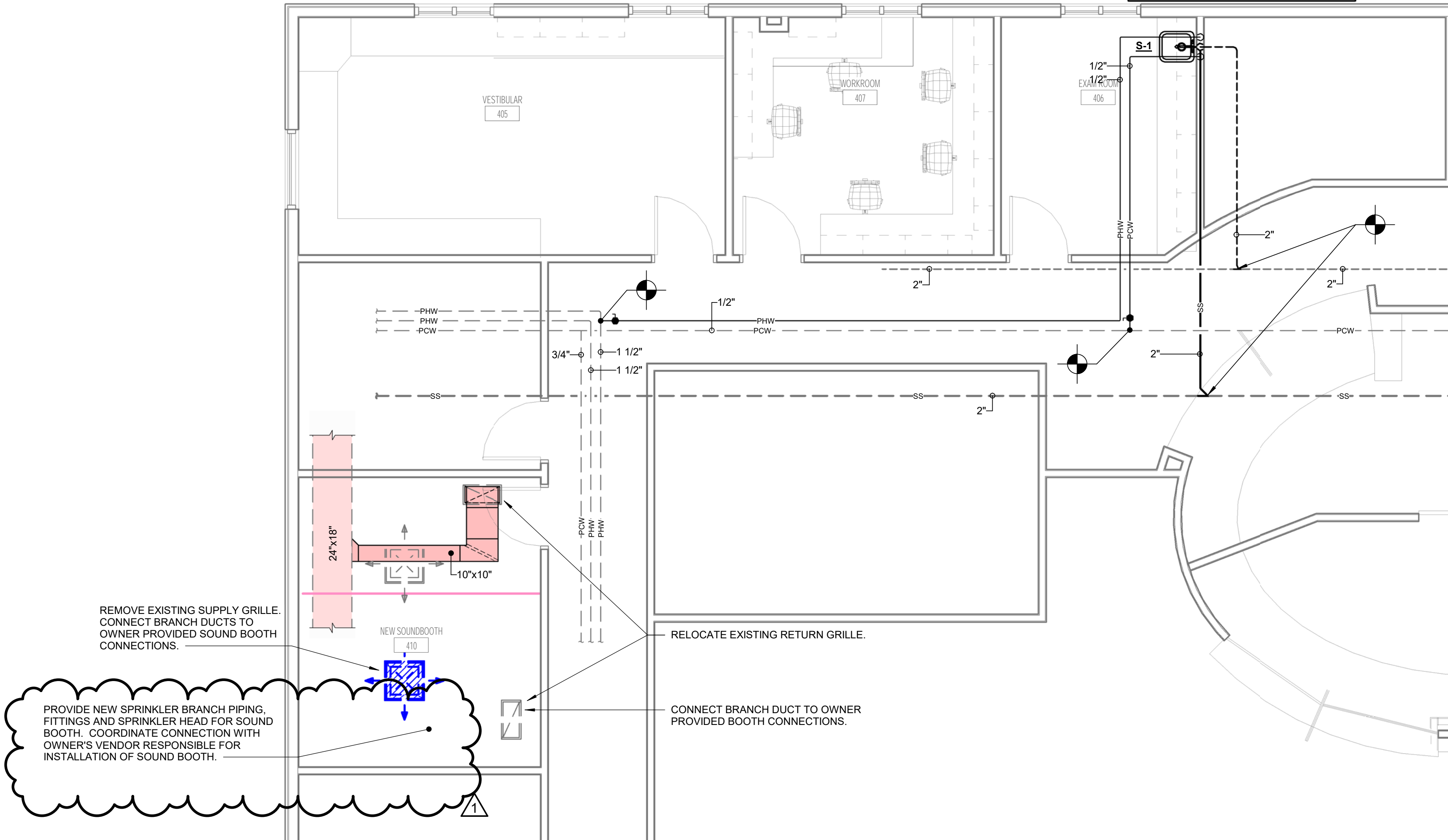
UMMC
764 LAKELAND DRIVE
JACKSON, MS 39216

S-1:
SINK: JUST MODEL SL-2017-A-GR
FAUCET: T&S MODEL B-2867-04/VRS
• (1.2 GPM VR LAMINAR FLOW)
• QUARTER-TURN BALL STYLE STOPS
• 17 GA. CHROME PLATED BRASS TAIL-PIECE & TRAP.

MARK	DESCRIPTION
-----SS-----	EXISTING SANITARY WASTE PIPING
-----PCW-----	EXISTING SANITARY VENT PIPING
-----PHW-----	EXISTING POTABLE COLD WATER PIPING
-----PHW-----	EXISTING POTABLE HOT WATER PIPING
-----SS-----	NEW SANITARY VENT PIPING
-----PCW-----	NEW SANITARY WASTE PIPING
-----PCW-----	NEW POTABLE COLD WATER PIPING
-----PHW-----	NEW POTABLE HOT WATER PIPING (120°F)
	POINT OF CONNECTION TO EXISTING
	TYPICAL SUPPLY AIR DIFFUSER (ARROWS INDICATE AIR FLOW THROW DIRECTION)
	TYPICAL EXHAUST OR RETURN AIR REGISTER
	TYPICAL RECTANGULAR TO RECTANGULAR TAKEOFF ADAPTER WITH VOLUME DAMPER AND EXTRACTOR
	WHEN PRINTED IN COLOR, SUPPLY DUCTWORK INDICATED BY BLUE COLOR, RETURN/TRANSFER DUCTWORK INDICATED BY RED COLOR AND EXHAUST DUCTWORK INDICATED BY GREEN COLOR. WHEN PRINTED IN GRAYSCALE, ALL DUCTWORK APPEARS THE SAME AND INDICATION OF DUCTWORK TYPE IS DETERMINED BY EQUIPMENT/GRILLES SERVED (SEE OTHER LEGENDS FOR MORE INFORMATION).
	RECTANGULAR DUCT WITH SIZE LISTED. THE "x" DENOTES RECTANGULAR DUCT. (THE FIRST NUMBER INDICATES DUCT WIDTH PARALLEL TO VIEW WHILE THE SECOND NUMBER INDICATES DEPTH PERPENDICULAR TO VIEW). SEE PLANS AND SPECIFICATIONS FOR DUCT CONSTRUCTION REQUIREMENTS.
	TYPICAL AIR FOIL TURNING VANES

GENERAL MECHANICAL NOTES:

1. PROVIDE ALL PLUMBING PIPING, FIXTURES, TRIM, AND ACCESSORIES AS REQUIRED FOR A COMPLETE AND FUNCTIONAL PLUMBING SYSTEM. VERIFY WITH ARCHITECT AND DRAWINGS, WHICH PLUMBING INSTALLATIONS ARE DESIGNATED FOR ADA ACCESSIBILITY. ALL SUCH FIXTURE INSTALLATIONS SHALL INCLUDE ALL INSTALLATION ACCESSORIES, MOUNTING/LIP HEIGHT, CONTROL OFFSET, SIZE AND ACCESSIBILITY AS REQUIRED BY LATEST EDITION OF AMERICANS WITH DISABILITIES ACT (ADA) AND LOCAL GOVERNING AUTHORITIES.
2. ALL PIPING SHALL BE CONCEALED INSIDE WALLS AND PIPE CHASES OR ABOVE CEILINGS, EXCEPT AS OTHERWISE NOTED AND AT APPROPRIATE EQUIPMENT FINAL CONNECTIONS. HOLD ALL PIPING ABOVE CEILINGS AS HIGH AS POSSIBLE AND COORDINATE WITH OTHER CRAFTS.
3. COORDINATE ALL WORK WITH ARCHITECTURAL, STRUCTURAL, MECHANICAL, AND ELECTRICAL TRADES. PIPE ROUTING SHOWN IS DIAGRAMMATIC. PROVIDE ALL OFFSETS, ETC., TO AVOID INTERFERENCES WITH STRUCTURAL MEMBERS, EQUIPMENT, PIPING, DUCTWORK, LIGHTS, CONDUIT, ETC.
4. FIRESTOP ALL PIPING AND CONDUIT PENETRATIONS OF FLOORS AND FIRE, SMOKE, OR COMBINATION WALLS/PARTITIONS TO MEET THE LATEST INTERNATIONAL BUILDING CODE REQUIREMENTS. PROVIDE APPROVED SOUND ABSORBENT SEALANT AT ALL SIMILAR PENETRATIONS AT "SOUND" AND FULL HEIGHT WALLS (SEALED TO UNDERSIDE OF ROOF DECK) INDICATED ON ARCHITECTURAL AND/OR MECHANICAL DRAWINGS.
5. DO NOT RUN PLUMBING PIPING THROUGH OR OVER ELECTRICAL CLOSETS OR WITHIN 3'-0" OF ELECTRICAL PANEL FRONTS.
6. DISINFECT ALL NEW POTABLE WATER PIPING SYSTEMS WITH DOCUMENTATION PER SPECIFICATIONS AND PRIOR TO SWAP OVER OF NEW POTABLE WATER SERVICES.
7. PRIOR TO SUBMITTING A BID, VISIT THE SITE OF THE PROPOSED CONSTRUCTION & BECOME THOROUGHLY ACQUAINTED WITH EXISTING CONDITIONS TO BE ENCOUNTERED ETC. NO ADDITIONAL COMPENSATION SHALL BE ALLOWED FOR CONDITIONS WHICH WERE NOT KNOWN OR APPRECIATED WHEN SUBMITTING A BID IF THE CONDITION COULD HAVE BEEN DISCOVERED WITHOUT DEMOLITION OF EXISTING CONSTRUCTION.
8. PROVIDE WATER HAMMER ARRESTORS ON ALL PLUMBING FIXTURES. INSTALL PER MANUFACTURER'S RECOMMENDATIONS.
9. FLEXIBLE DUCT RUN OUTS TO SUPPLY AND RETURN AIR DISTRIBUTION DEVICES AND AIR TERMINAL UNITS SHALL BE INSTALLED FREE OF KINKS AND SAGS AND SHALL BE A MAXIMUM LENGTH NOT TO EXCEED FIVE (5) FEET. UTILIZE AN ELASTOMERIC SEALANT ON MALE DUCT AND AIR DISTRIBUTION DEVICE ATTACHMENTS.
10. PORTIONS OF DUCTWORK VISIBLE THROUGH GRILLES AND REGISTERS IN FINISHED AREAS SHALL BE PAINTED FLAT BLACK.
11. VERIFY AVAILABLE SPACE ABOVE CEILINGS AND STRUCTURAL RESTRICTIONS PRIOR TO CONSTRUCTING DUCTWORK. DUCTWORK SIZE MAY BE ALTERED TO CONFORM TO THESE REQUIREMENTS PROVIDING SIMILAR AIR DELIVERY CHARACTERISTICS AS DEFINED AND APPROVED BY PROFESSIONAL. ALL SUPPLY AND RETURN AIR DUCTS THAT ARE SHOWN TO BE ROUTED CONCEALED ABOVE CEILINGS SHALL BE ROUTED TO AVOID THE BUILDING STRUCTURE AND COORDINATED WITH THE LIGHT FIXTURES, CONDUIT PIPING, ETC. VERIFY AVAILABLE SPACE AND COORDINATE THE SIZE AND ROUTING OF ALL DUCTWORK. IT IS INTENDED THAT DUCTWORK HAVE THE "RIGHT-OF-WAY" ABOVE MOST OTHER CRAFTS AND INSTALLATIONS.
12. SEE NOTES, SCHEDULES AND INSTALLATION DETAILS ON DRAWINGS FOR SPECIFICATIONS GOVERNING DUCTWORK SEALANT, DUCTWORK INSTALLATION, SUPPORTS, TAPS, FITTINGS, THE RESTRICTED USE OF FLEXIBLE DUCTWORK AND DUCTWORK LEAK/PRESSURE TESTING.
13. ALL BRANCH DUCT OUTLETS TO SUPPLY AND RETURN AIR DISTRIBUTION GRILLES, REGISTERS, AND DIFFUSERS SHALL INCLUDE VOLUME DAMPER AND TYPE BRANCH DUCT ADAPTER/OUTLET INDICATED. ROUND TAPS TO RECTANGULAR TRUNK DUCTS SHALL BE BELLMOUTH OR LATERAL TYPE. NO DOVETAIL FIELD CONNECTIONS ALLOWED, EXCEPT WHERE SPECIFICALLY DETAILED.
14. DUCT SIZES INDICATED ARE ACTUAL INSIDE NET DIMENSIONS. ALL RECTANGULAR SUPPLY, RETURN, AND OUTSIDE AIR DUCT SIZES ARE INSIDE CLEAR DIMENSIONS INSIDE ACOUSTICAL LINER, WHERE APPLICABLE.



1 M101 4th Floor Mechanical Plans
1/4" = 1'-0"



KEYPLAN



11/5/2021

CONSTRUCTION
DOCUMENTS
WBA # 21-063

REVISIONS		
NO.	DESCRIPTION	DATE
1	Add No.3	3/9/2022

GSK
MECHANICAL
Consulting Engineering
201 Park Court - Suite A | Ridgeland, MS 39157
P: 601.626.2500 F: 601.462.9311
www.gskmech.com
GSK#: 116-046

M101
4th FLOOR
MECHANICAL
PLAN