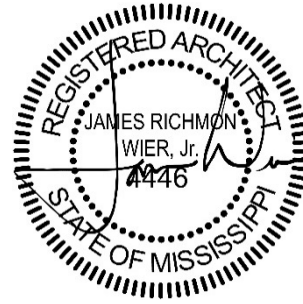




September 20, 2021

Pearl High School Indoor Training Facility  
Pearl, Mississippi



---

## ADDENDUM NO. 06

### NOTICE TO ALL DOCUMENT HOLDERS:

The following additions, deletions, changes and clarifications to the drawings and specifications are to be included as part of the Contract Documents.

### SPECIFICATIONS

- ITEM NO. 01      07.4213 INSULATED METAL ROOF & WALL PANELS** *(revised via Addendum No. 2)*  
**Part 2 Products ; Para. 2. Panel Systems.**  
**Add the following sentence** to the end of Subparagraph 2A.  
    **"Panel System Trim shall be either manufacturer's extruded profiles as indicated in the Drawings or similar sizes & shapes formed from sheet metal as specified in Section 07.6200."**
- ITEM NO. 02      13.3419 METAL BUILDING SYSTEMS**  
**PART 2 PRODUCTS ; Para. 2. Assemblies**  
**Item E. Roof System** *(revised previously via Addendum No. 5 (Add No. 5 – Item No. 8)*  
**Sub Item 2. At open-air Turf Practice Field**  
**Add the following sentence:**  
    **"Panels shall be 24 Gauge min. Finish Shall be Manufacturer's Signature® 200 coating. Color to be selected from manufacturer's standard range."**
- ITEM NO. 03      09.5100 ACOUSTICAL CEILINGS**  
**PART 2 PRODUCTS ; Para. 2. ACOUSTICAL UNITS**  
**Revise Subpara. B (Acoustical Panels Type 1) to read as follows:**  
    **"B. Acoustical Panel Types – See Finish Legend on Sheet A601."**
- Delete Subpara. C (Acoustical Panels Type 2) in its entirety.**
- PART 2 PRODUCTS ; Para. 3. SUSPENSION SYSTEM(S)**  
**Delete Subpara. D (Exposed Steel Suspension System Type 2 | Upgraded) in its entirety.**

- ITEM NO. 04**     **10.1400 SIGNAGE** (revised per Addendum No. 2 – (Add No. 2 – item No. 5)  
**PART 2 PRODUCTS**  
**Item 6 INTERNALLY-ILLUMINATED LOGO SIGNAGE**  
**Para A. Channel Logo Signage**  
Revise to read as follows:  
    **“A. Basis of Design: Fabricated aluminum cabinet with angle frame and .090 aluminum skin with Signcomp full bleed extrusion, digitally printed flexible face internally illuminated with LEDs.”**
- ITEM NO. 05**     **27.3000 TELEPHONE AND DATA SYSTEMS** (issued per Addendum No. 1 – (Add No. 1 – item No.11)  
**Part 3 EXECUTION ; Para 3.6 Service Conduits:**  
Revise the first sentence of this paragraph to read as follows:  
    **“ Provide Service Conduit configurations, quantities & routing as indicated on the Electrical Site Plan Sheet E0.3.”**
- ITEM NO. 06**     **32.3113 CHAIN LINK FENCES AND GATES**  
Add this Specification Section in its entirety per the enclosed pages.

#### **DRAWINGS**

- ITEM NO. 07**     **A001 ARCHITECTURAL SITE PLAN**  
Detail #1 Architectural Site Plan  
Add the following General Note:  
    **“ Site Fencing (including fencing labeled as “Type 2”) shall be as specified in Section 32.3113 Chain Link Fences and Gates.”**
- Detail #5 3D – SCOREBOARD PILASTER  
Add the following General Note:  
    **“Scoreboard, Steel Support Columns and Concrete Foundations shall be by others. Contractor shall construct masonry pilasters as described in Detail #4, this sheet. (3) Masonry Pilasters required. Brick Masonry Pilaster Plan Dimensions shall be 3-4” x 4’-8” (Outside dimensions of masonry). Steel Plate at top of pilaster shall be by Contractor and shall be ¼” thick min. Scoreboard shall be generally located just behind site fencing at South End Zone as depicted in Drawing #1, this sheet.” Final location to be confirmed by the Owner.”**
- ITEM NO. 08**     **A102 FIELD HOUSE PLAN**  
General Note issued via Addendum No. 3 (Add No. 3 - item no. 3)  
Add the following sentence to the end of this General Note:  
  
    **“Owner’s separate vendor shall be responsible for delivery, assembly and setting items in-place. Contractor shall be responsible for making all utility connections.”**
- ITEM NO. 09**     **A102 FIELD HOUSE PLAN**  
Revise per the enclosed sheet
- ITEM NO. 10**     **A105 ROOF PLAN**  
Detail #1 FIELD HOUSE – ROOF PLAN  
Add the following General Note:  
    **“Delete HVAC Unit Screen Walls in their entirety. HVAC Units to remain.”**



**ITEM NO. 11      A601 PARTITIONS & FINISHES**  
**FINISH LEGEND**  
**CEILING FINISH - ACT -1 ; Name Column**  
**Revise "9/16" to read "15/16".**

**ITEM NO. 12      A702 ENLARGED PLANS & INTERIOR ELEVATIONS**  
**Add the following General Note:**

**"Refrigerator, Training Tables and Fixed Seating shall be Owner-Provided and Installed  
by Owner's separate vendor. Contractor shall be responsible for making all utility  
connections."**

**ITEM NO. 13      A802 MILLWORK DETAILS**  
**Add Sheet A802 per the enclosed sheet.**  
*Details at Trophy Cases are added.*

**ITEM NO. 14      E0.0 ELECTRICAL LEGEND**  
**E0.2 ELECTRICAL DETAILS**  
**E0.3 ELECTRICAL SITE PLAN**  
**E1.1 PARTIAL LIGHTING PLAN – PART A**  
**E2.1 PARTIAL POWER PLAN – PART B**  
**E3.1 PARTIAL MECH./AUX. PLAN – PART B**  
**Revise per the enclosed sheets.**

Encl:      Specification Section 32.3113 Chain Link Fences and Gates (3 pages)  
             Revised Sheet A102  
             Sheet A802 (24x26)  
             Revised Sheet #s E0.0, E0.2, E0.3, E1.1, E2.1, E3.1 (6 sheets)

cc:          All Document Holders  
             File 5820



## Chain Link Fences and Gates

### PART 1 GENERAL

1. SECTION INCLUDES
  - A. Posts, rails, and frames.
  - B. Wire fabric.
  - C. Manual gates with related hardware.
  - D. Accessories.
2. RELATED REQUIREMENTS
  - A. Section 03.3000 - Cast-in-Place Concrete: Concrete anchorage for posts.
3. REFERENCE STANDARDS
  - A. ASTM A121 - Standard Specification for Metallic-Coated Carbon Steel Barbed Wire 2013.
  - B. ASTM A123/A123M - Standard Specification for Zinc (Hot-Dip Galvanized) Coatings on Iron and Steel Products 2015.
  - C. ASTM A153/A153M - Standard Specification for Zinc Coating (Hot-Dip) on Iron and Steel Hardware 2009.
  - D. ASTM A392 - Standard Specification for Zinc-Coated Steel Chain-Link Fence Fabric 2011a.
  - E. ASTM A491 - Standard Specification for Aluminum-Coated Steel Chain-Link Fence Fabric 2011.
  - F. ASTM F567 - Standard Practice for Installation of Chain-Link Fence 2011.
  - G. CLFMI CLF-FIG0111 - Field Inspection Guide 2014.
  - H. CLFMI CLF-SFR0111 - Security Fencing Recommendations 2014.
  - I. CLFMI CLF 2445 - Product Manual 1997.
4. SUBMITTALS
  - A. See Section 01.3000 - Administrative Requirements, for submittal procedures.
  - B. Product Data: Provide data on fabric, posts, accessories, fittings and hardware.
  - C. Shop Drawings: Indicate plan layout, spacing of components, post foundation dimensions, hardware anchorage, and schedule of components. See CLFMI CLF-SFR0111 for planning and design recommendations.
  - D. Manufacturer's Installation Instructions: Indicate installation requirements, post foundation anchor bolt templates, and [\_\_\_\_\_].
5. QUALITY ASSURANCE
  - A. Manufacturer Qualifications: Company specializing in manufacturing products specified in this section, with not less than three years of documented experience.
6. WARRANTY
  - A. See Section 01.7800 - Closeout Submittals, for additional warranty requirements.
  - B. Correct defective Work within a five year period after Date of Substantial Completion.

### PART 2 PRODUCTS

1. MANUFACTURERS
  - A. Chain Link Fences and Gates:
    1. Master-Halco, Inc; [\_\_\_\_\_]: [www.masterhalco.com/#sle](http://www.masterhalco.com/#sle).
    2. Merchants Metals; [\_\_\_\_\_]: [www.merchantsmetals.com/#sle](http://www.merchantsmetals.com/#sle).
    3. Substitutions: See Section 01.6000 - Product Requirements.
2. MATERIALS AND COMPONENTS
  - A. Materials and Components: Conform to CLFMI CLF 2445.
  - B. Fabric Size: CLFMI CLF 2445 Heavy Industrial service.
  - C. Intermediate Posts: Type I round.
  - D. Terminal, Corner, Rail, Brace, and Gate Posts: Type I round.

3. MANUAL GATES AND RELATED HARDWARE

- A. Hardware for Single Swinging Gates: 180 degree hinges, 2 for gates up to 60 inches (1,525 mm) high, 3 for taller gates; fork latch with gravity drop and padlock hasp; keeper to hold gate in fully open position.
- B. Hardware for Double Swinging Gates: 180 degree hinges, 2 for gates up to 60 inches (1,525 mm) high, 3 for taller gates; drop bolt on inactive leaf engaging socket stop set in concrete, active leaf latched to inactive leaf preventing raising of drop bolt, padlock hasp; keepers to hold gate in fully open position.
- C. Hinges: Finished to match fence components.

4. ACCESSORIES

- A. Caps: Cast steel galvanized; sized to post diameter, set screw retainer.
- B. Fittings: Sleeves, bands, clips, rail ends, tension bars, fasteners and fittings; steel.

**PART 3 EXECUTION**

1. INSTALLATION

- A. Install framework, fabric, accessories and gates in accordance with ASTM F567.
- B. Place fabric on outside of posts and rails.
- C. Set intermediate posts plumb, in concrete footings with top of footing 2 inches above finish grade. Slope top of concrete for water runoff.
- D. Brace each gate and corner post to adjacent line post with horizontal center brace rail [\_\_\_\_\_]. Install brace rail one bay from end and gate posts.
- E. Provide top rail through line post tops and splice with 6 inch (150 mm) long rail sleeves.
- F. Do not stretch fabric until concrete foundation has cured 28 days.
- G. Position bottom of fabric 2 inches (50 mm) above finished grade.
- H. Fasten fabric to top rail, line posts, braces, and bottom tension wire with tie wire at maximum 15 inches (380 mm) on centers.

2. TOLERANCES

- A. Maximum Variation From Plumb: 1/4 inch (6 mm).
- B. Maximum Offset From True Position: 1 inch (25 mm).

3. FIELD QUALITY CONTROL

- A. See Section 01.4000 - Quality Requirements, for additional requirements.
- B. Layout: Verify that fence installation markings are accurate to design, paying attention to gate locations, underground utilities, and property lines.
- C. Fence Height: Randomly measure fence height at three locations or at areas that appear out of compliance with design.
- D. Gates: Inspect for level, plumb, and alignment.
- E. Workmanship: Verify neat installation free of defects. See CLFMI CLF-FIG0111 for field inspection guidance.

4. CLEANING

- A. Leave immediate work area neat at end of each work day.
- B. Clean jobsite of excess materials; scatter excess material from post hole excavations uniformly away from posts. Remove excess material if required.
- C. Clean fence with mild household detergent and clean water rinse well.
- D. Remove mortar from exposed posts and other fencing material using a 10 percent solution of muriatic acid followed immediately by several rinses with clean water.
- E. Touch up scratched surfaces using materials recommended by manufacturer. Match touched-up paint color to factory-applied finish.

5. CLOSEOUT ACTIVITIES

*issued via Addendum No. 6*

- A. See Section 01.7800 - Closeout Submittals, for closeout submittals.
- B. See Section 01.7900 - Demonstration and Training, for additional requirements.

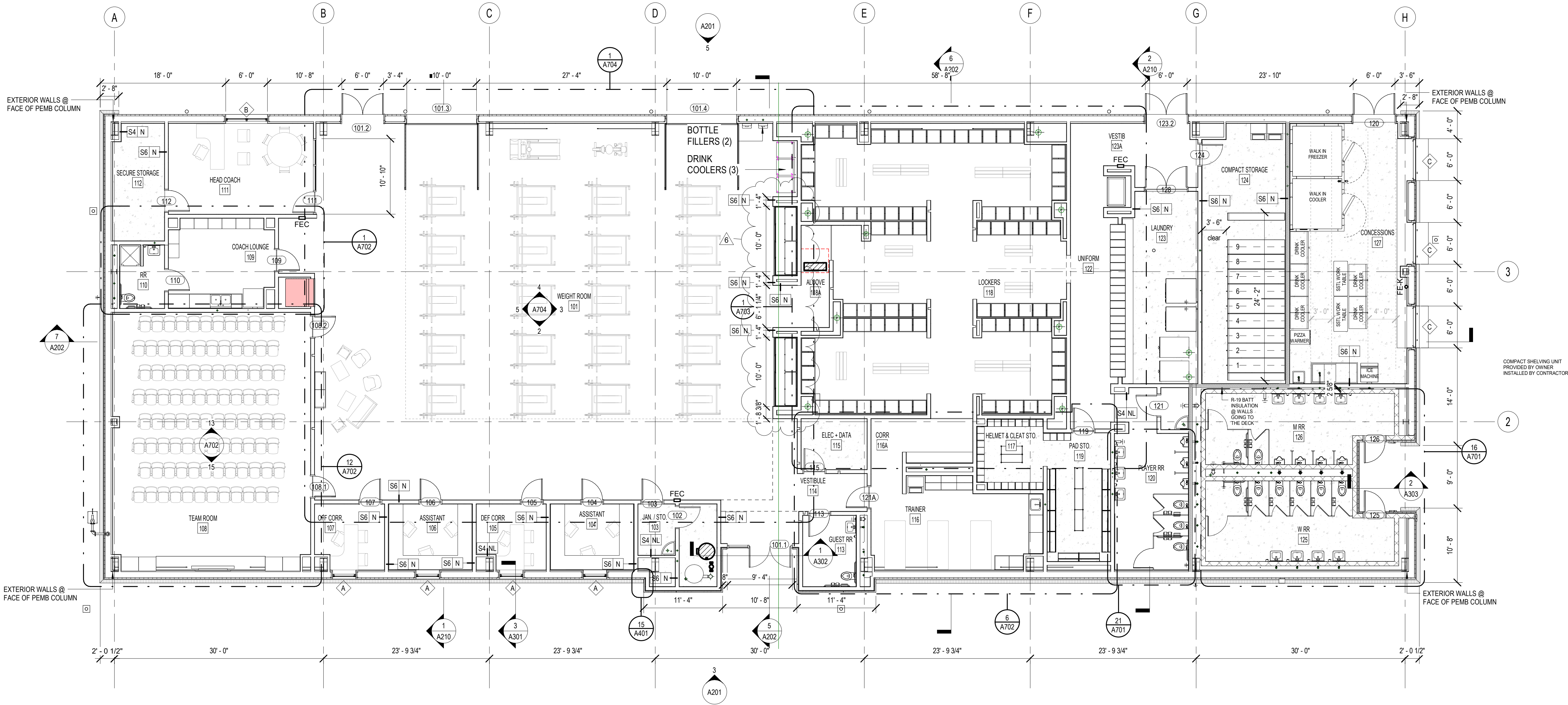
**END OF SECTION**



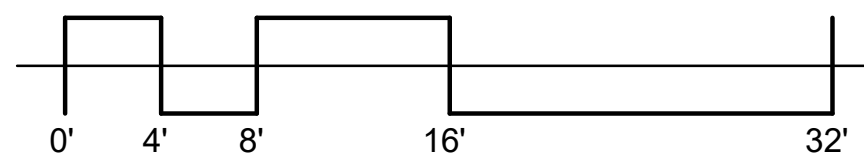
WED 25 SEP 2021

CONSTRUCTION  
DOCUMENTS  
WBA # 5820

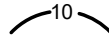
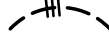
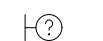




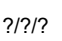
REVISIONS		
NO.	DESCRIPTION	DATE
6	ADDENDUM NO. 6	9-20-2021



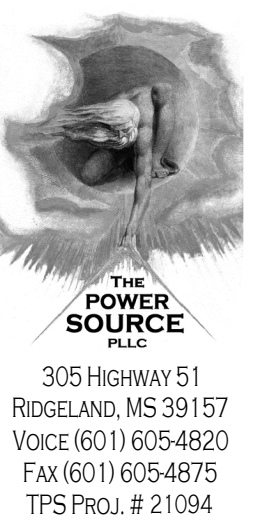
1 ENLARGED PLAN  
1/8" = 1'-0"





ELECTRICAL LEGEND																													
GENERAL NOTES	SWITCHES	CONDUIT AND WIRING																											
1. ALL EQUIPMENT AND DEVICES ARE TO BE FLUSH MOUNTED UNLESS OTHERWISE NOTED. 2. DEVICES NOTED AS "GFI" SHALL BE GROUND FAULT CIRCUIT INTERRUPTING DEVICES. 3. DEVICES NOTED AS "WP" SHALL BE WEATHERPROOF WHILE-IN-USE. 4. PROVIDE UNSWITCHED POWER TO EMERGENCY BATTERY PACKS.	<div>\$ SINGLE-POLE, SINGLE-THROW SWITCH. MOUNT CENTERLINE OF BOX AT 45"A.F.F. UNLESS NOTED OTHERWISE.</div> <div>2P\$ DOUBLE-POLE, SINGLE-THROW, 30 AMP SWITCH. MOUNT CENTERLINE OF BOX AT 45"A.F.F. UNLESS NOTED OTHERWISE.</div> <div>3\$ THREE-WAY SWITCH. MOUNT CENTERLINE OF BOX AT 45"A.F.F. UNLESS NOTED OTHERWISE.</div> <div>4\$ FOUR-WAY SWITCH. MOUNT CENTERLINE OF BOX AT 45"A.F.F. UNLESS NOTED OTHERWISE.</div> <div>D 600 WATT INCANDESCENT DIMMER. MOUNT CENTERLINE OF BOX AT 45"A.F.F. UNLESS NOTED OTHERWISE.</div> <div>M\$ AUTOMATIC WALL SWITCH. SENSORSWITCH #WSD-PDT OR APPROVED EQUAL. MOUNT CENTERLINE OF BOX AT 45" A.F.F. UNLESS NOTED OTHERWISE.</div> <div>M<sub>D</sub> AUTOMATIC WALL SWITCH WITH INTEGRAL 0-10V DIMMER. LUTRON #MS-2101 OR APPROVED EQUAL. MOUNT CENTERLINE OF BOX AT 45"A.F.F. UNLESS NOTED OTHERWISE.</div> <div>\$TS DIGITAL TIME SWITCH WITH ADJUSTABLE RANGE FROM 5 MINUTES TO 12 HOURS. FURNISH WITH AUDIBLE WARNING. SENSORSWITCH #PTS-60 OR APPROVED EQUAL. MOUNT CENTERLINE OF BOX AT 45" A.F.F. UNLESS NOTED OTHERWISE.</div> <div>\$T HORSEPOWER RATED SWITCH WITH THERMAL OVERLOADS (MANUAL MOTOR STARTER).</div> <div>(MD1) PASSIVE INFRARED AND ULTRASONIC DUAL TECHNOLOGY OCCUPANCY SENSOR WITH A 12' RADIAL COVERAGE. CEILING MOUNTED. SENSORSWITCH #CM-PDT-9 OR APPROVED EQUAL.</div> <div>(MD2) PASSIVE INFRARED AND ULTRASONIC DUAL TECHNOLOGY OCCUPANCY SENSOR WITH A 28' RADIAL COVERAGE. CEILING MOUNTED. SENSORSWITCH #CM-PDT-10 OR APPROVED EQUAL.</div> <div>&lt;(MD3) PASSIVE INFRARED AND ULTRASONIC DUAL TECHNOLOGY OCCUPANCY SENSOR WITH A 2000 SQ. FT. COVERAGE. MOUNT IMMEDIATELY BELOW CEILING. SENSORSWITCH #WV-PDT-16 OR APPROVED EQUAL.</div> <div>(PP) POWER PACK MOUNTED ABOVE CEILING. SENSORSWITCH #PP20 OR APPROVED EQUAL.</div>	<div> CONDUCTORS IN CONDUIT CONCEALED WITHIN WALL OR CEILING. TIC MARKS INDICATE NUMBER OF CONDUCTORS. THE EQUIPMENT GROUNDING CONDUCTOR IS NOT SHOWN, BUT SHALL BE PROVIDED. SIZE THE EQUIPMENT GROUNDING CONDUCTOR AND THE CONDUIT PER THE NEC. THE ABSENCE OF TIC MARKS SIGNIFIES THAT TWO CONDUCTORS PLUS AN EQUIPMENT GROUNDING CONDUCTOR SHOULD BE PROVIDED. FOR EXAMPLE, THE MARKINGS TO THE LEFT SIGNIFY THAT THREE CONDUCTORS PLUS AN EQUIPMENT GROUNDING CONDUCTOR SHOULD BE PROVIDED.</div> <div> THE TEXT INSIDE THE ARC INDICATES THE AWG SIZE OF THE CONDUCTORS THAT SHALL BE RUN IN THE CONDUIT. THE ABSENCE OF TEXT SIGNIFIES THAT THE CONDUCTORS SHOULD BE #12 AWG.</div> <div> CIRCUITRY RUN IN STRAIGHT LINE SEGMENTS SIGNIFIES EXPOSED SURFACE-MOUNTED RACEWAY (SEE SPECIFICATIONS).</div> <div> CONDUCTORS IN CONDUIT CONCEALED BELOW GRADE OR FLOOR. TIC MARKS INDICATE NUMBER OF CONDUCTORS. THE EQUIPMENT GROUNDING CONDUCTOR IS NOT SHOWN, BUT SHALL BE PROVIDED. SIZE THE EQUIPMENT GROUNDING CONDUCTOR AND THE CONDUIT PER THE NEC. THE ABSENCE OF TIC MARKS SIGNIFIES THAT TWO CONDUCTORS PLUS AN EQUIPMENT GROUNDING CONDUCTOR SHOULD BE PROVIDED. THE MARKINGS TO THE LEFT SIGNIFY THAT THREE CONDUCTORS PLUS AN EQUIPMENT GROUNDING CONDUCTOR SHOULD BE PROVIDED.</div> <div> HOMERUN TO PANELBOARD. ARC DENOTES CONCEALED CIRCUITRY. TEXT DENOTES PANELBOARD NAME WITH CIRCUIT NUMBER. DEVICES HAVING CIRCUIT NUMBERS LOCATED BESIDE THEM MAY NOT SHOW THE CIRCUIT NUMBERS AT THE HOMERUN ARROWS.</div> <div> PARTIAL HOMERUN TO PANELBOARD. COMBINE ALL PARTIAL HOMERUNS THAT ARE ON THE SAME CIRCUIT IN A JUNCTION BOX PRIOR TO ENTERING THE PANELBOARD.</div> <div> LOW VOLTAGE CONDUCTORS USED FOR MOTION DETECTOR CIRCUITRY. SEE MANUFACTURER'S RECOMMENDATIONS FOR CONDUCTOR REQUIREMENTS.</div>																											
LUMINAIRES (See Light Fixture Schedule)																													
NOTE: THE NUMBER INSIDE THE CIRCLE IS THE CIRCUIT NUMBER. THE LETTER BESIDE THE SYMBOL IS THE FIXTURE TYPE DESCRIBED IN THE LIGHT FIXTURE SCHEDULE.																													
<div>?  2'X4' RECESSED FIXTURE.</div> <div>?  2'X4' RECESSED EMERGENCY FIXTURE.</div> <div>?  SURFACE MOUNTED OR SUSPENDED FIXTURE.</div> <div>?  SURFACE MOUNTED OR SUSPENDED EMERGENCY FIXTURE.</div> <div>?  RECESSED CEILING FIXTURE.</div> <div>?  CEILING MOUNTED EXIT SIGN. PROVIDE CHEVRONS AS INDICATED BY ARROWS.</div> <div>?  EXIT SIGN WITH EMERGENCY LIGHTING.</div> <div>?  WALL MOUNTED EXIT SIGN. PROVIDE CHEVRONS AS INDICATED BY ARROWS.</div> <div>?  EMERGENCY LIGHTING.</div> <div>?  WALL MOUNTED FIXTURE.</div>																													
MISCELLANEOUS	FIRE ALARM SYSTEM	VOLTAGE DROP CHART FOR 20A, 1Ø CIRCUITS																											
<div>(C) CONTACTOR.</div> <div>(PE) PHOTOCELL.</div> <div>Q CEILING MOUNTED JUNCTION BOX.</div> <div>Q WALL MOUNTED JUNCTION BOX.</div> <div>~ FLEXIBLE CONNECTION TO EQUIPMENT.</div>	<div>(F) MANUAL PULL STATION. MOUNT 48"A.F.F. TO CENTERLINE OF BOX.</div> <div> STROBE. MOUNT 80"A.F.F. TO BOTTOM OF BOX.</div> <div> COMBINATION SPEAKER AND STROBE. MOUNT 80"A.F.F. TO BOTTOM OF BOX.</div> <div> COMBINATION HORN AND STROBE 177 CANDELA. MOUNT 80"A.F.F. TO BOTTOM OF BOX.</div> <div> STROBE 177 CANDELA. MOUNT 80"A.F.F. TO BOTTOM OF BOX.</div> <div>S SMOKE DETECTOR.</div> <div>T THERMAL DETECTOR.</div> <div>D S DUCT SMOKE DETECTOR IN RETURN DUCT.</div> <div>D S DUCT SMOKE DETECTOR IN SUPPLY DUCT.</div> <div>FACB FIRE ALARM CONTROL PANEL.</div> <div>FABB FIRE ALARM ANNUNCIATOR PANEL.</div> <div>(FS) FLOW SWITCH.</div> <div>(TS) TAMPER SWITCH.</div> <div>(PIV) POST INDICATOR VALVE.</div> <div> FIRE ALARM HORN AND STROBE MOUNTED ON THE CEILING TO A FLUSH MOUNTED BOX.</div> <div> FIRE ALARM STROBE MOUNTED ON THE CEILING TO A FLUSH MOUNTED BOX.</div> <div> FIRE ALARM SPEAKER STROBE MOUNTED ON THE CEILING TO A FLUSH MOUNTED BOX.</div>	<table><tr><th>Voltage</th><th>Circuit Length</th><th>Conductor Size (AWG)</th></tr><tr><td>120</td><td>&lt; 50'</td><td>#12</td></tr><tr><td>120</td><td>&gt; 50'</td><td>#10</td></tr><tr><td>120</td><td>&gt; 90'</td><td>#8</td></tr><tr><td>120</td><td>&gt; 140'</td><td>#6</td></tr><tr><td>277</td><td>&lt; 130'</td><td>#12</td></tr><tr><td>277</td><td>&gt; 130'</td><td>#10</td></tr><tr><td>277</td><td>&gt; 200'</td><td>#8</td></tr><tr><td>277</td><td>&gt; 330'</td><td>#6</td></tr></table>	Voltage	Circuit Length	Conductor Size (AWG)	120	< 50'	#12	120	> 50'	#10	120	> 90'	#8	120	> 140'	#6	277	< 130'	#12	277	> 130'	#10	277	> 200'	#8	277	> 330'	#6
Voltage	Circuit Length	Conductor Size (AWG)																											
120	< 50'	#12																											
120	> 50'	#10																											
120	> 90'	#8																											
120	> 140'	#6																											
277	< 130'	#12																											
277	> 130'	#10																											
277	> 200'	#8																											
277	> 330'	#6																											
RECEPTACLES	CCTV SYSTEM	COMMUNICATIONS																											
<div> DUPLEX RECEPTACLE, NEMA 5-20R, MOUNTED 18" A.F.F. TO CENTERLINE OF BOX UNLESS NOTED OTHERWISE.</div> <div> DOUBLE DUPLEX RECEPTACLE, NEMA 5-20R, ONE COVER PLATE, MOUNTED 18" A.F.F. TO CENTERLINE OF BOX UNLESS NOTED OTHERWISE.</div> <div> DOUBLE DUPLEX RECEPTACLE, NEMA 5-20R, ONE COVER PLATE, MOUNTED WITH BOTTOM OF BOX 2" ABOVE COUNTER WITH BACKSPASH, AND 6" ABOVE COUNTER WITHOUT BACKSPASH. WHERE RECEPTACLE IS SHOWN IN AN AREA WITH NO COUNTER, MOUNT 45"A.F.F. TO CENTERLINE OF BOX.</div> <div> DUPLEX RECEPTACLE, NEMA 5-20R, MOUNTED WITH BOTTOM OF BOX 2" ABOVE COUNTER WITH BACKSPASH AND 6" ABOVE COUNTER WITHOUT BACKSPASH. WHERE RECEPTACLE IS SHOWN IN AN AREA WITH NO COUNTER, MOUNT 45"A.F.F. TO CENTERLINE OF BOX.</div> <div> DUPLEX RECEPTACLE, NEMA 5-20R, FOR DRINKING FOUNTAIN FED FROM GFCI BREAKER. MOUNTED IN ACCORDANCE WITH MANUFACTURER'S ROUGH-IN REQUIREMENTS. VERIFY CONNECTION TYPE PRIOR TO BID. PROVIDE PROPER EQUIPMENT FOR CONNECTION TYPE REQUIRED.</div>	<div> CAMERA SUPPLIED AND INSTALLED BY OWNER. CAT 6 CABLING BY CONTRACTOR.</div>	<div><p>VOLTAGE DROP CHART NOTES:</p><p>1) CIRCUIT SIZES INDICATED ON THE DRAWINGS ARE MINIMUM REQUIREMENTS. REFER TO THIS CHART FOR UPSIZING CONDUCTORS AS NEEDED.</p><p>2) DO NOT CONNECT CONDUCTORS LARGER THAN #10 DIRECTLY TO A RECEPTACLE OR A SWITCH. PROVIDE A JUNCTION BOX TO DOWNSIZE THE CONDUCTOR TO #12 AT THE DEVICE.</p><p>3) FOR CIRCUITS LONGER THAN THOSE LISTED ABOVE, CONSULT WITH THE ENGINEER FOR CONDUCTOR SIZES.</p></div> <div><p>COMMUNICATIONS</p></div> <div><div> DATA OUTLET MOUNTED 18" A.F.F. TO CENTERLINE OF BOX UNLESS NOTED OTHERWISE.</div><div> DATA OUTLET MOUNTED WITH BOTTOM OF BOX 2" ABOVE COUNTER BACKSPASH. WHERE THERE IS NO BACKSPASH MOUNT 6" ABOVE COUNTER. WHERE TELEPHONE/DATA OUTLET IS SHOWN IN AN AREA WITH NO COUNTER, MOUNT 45" A.F.F. TO CENTERLINE OF BOX.</div><div> WIRELESS ACCESS POINT.</div></div>																											
	GEAR																												
	<div> FUSED DISCONNECT SWITCH. TEXT INDICATES AMPACITY/NUMBER OF POLES/ENCLOSURE TYPE; F-(RATING OF FUSES).</div> <div> NON-FUSED DISCONNECT SWITCH. TEXT INDICATES AMPACITY/NUMBER OF POLES/ENCLOSURE TYPE.</div> <div> PANELBOARD.</div>																												

LIGHTING FIXTURE SCHEDULE					
TYPE	MANUFACTURER	PART NUMBER	LAMPS	MOUNTING	REMARKS
A	LITHONIA	ZL1N48-5000LM-FST-MVOLT-40K-80CRI WH-ZACVH-M100	LED, 34W 4585 LUMENS	SUSPENDED	
B	LITHONIA	EPANL-2X4-4800LM-80CRI-40K-MIN10 ZT-MVOLT	LED, 45W 5119 LUMENS	RECESSED	
BE	LITHONIA	EPANL-2X4-4800LM-80CRI-40K-MIN10 ZT-MVOLT-E10WCP	LED, 45W 5119 LUMENS	RECESSED	-WITH EMERGENCY BATTERY PACK.
C	LITHONIA	LDN6-40/15-L06AR-LS-MVOLT-GZ10	LED, 17.5W 1514 LUMENS	RECESSED	
CE	LITHONIA	LDN6-40/15-L06AR-LS-MVOLT-GZ10 E10WCP	LED, 17.5W 1514 LUMENS	RECESSED	-WITH EMERGENCY BATERRY PACK.
D	LITHONIA	LDN6-40/05-L06AR-LS-MVOLT-GZ10	LED, 5.8W 527 LUMENS	RECESSED	
DE	LITHONIA	LDN6-40/05-L06AR-LS-MVOLT-GZ10 E10WCP	LED, 5.8W 527 LUMENS	RECESSED	-WITH EMERGENCY BATTERY PACK.
F	LITHONIA	EPANL-2X2-3400LM-80CRI-40K-MIN10 ZT-MVOLT	LED, 30W 3566 LUMENS	RECESSED	
FE	LITHONIA	EPANL-2X2-3400LM-80CRI-40K-MIN10 ZT-MVOLT-E10WCP	LED, 30W 3566 LUMENS	RECESSED	-WITH EMERGENCY BATTERY PACK.
G	LITHONIA	JHBL-18000LM-PCL-WD-MVOLT GZ10-40K-80CRI--E10WCP-DWHXD	LED, 120W 13,162 LUMENS	SURFACE	
GE	LITHONIA	JHBL-18000LM-PCL-WD-MVOLT GZ10-40K-80CRI--E10WCP-DWHXD	LED, 120W 13,162 LUMENS	SURFACE	-WITH EMERGENCY BATTERY PACK.
J	LITHONIA	IBG-72000LM-HEF-AFL-GND-MVOLT GZ10-50K-80CRI-DWH-WGIB46	LED, 426W 72,306 LUMENS	SURFACE	PROVIDE W/ WIRE GUARD.
K	MARK ARCHITECTURE	SL2L-6-FLP-FL-80CRI-40K-600LMF MIN10-120-*--ZT	LED, 36W 3198 LUMENS	RECESSED	*-COLOR BY ARCHITECT.
KK	MARK ARCHITECTURE	SL2L-20-FLP-FL-80CRI-40K-600LMF MIN10-120-*--ZT-MODW8XC1290C	72W 6396 LUMENS	RECESSED	*-COLOR BY ARCHITECT.
L	MARK ARCHITECTURE	SL2L-4-FLP-FL-80CRI-40K-1000LMF MIN10-120-*--ZT	LED, 44W 3448 LUMENS	RECESSED	*-COLOR BY ARCHITECT.
LL	MARK ARCHITECTURE	SL2L-8-FLP-FL-80CRI-40K-1000LMF MIN10-120-*--ZT-MODW4XC490C	LED, 88W 6896 LUMENS	RECESSED	*-COLOR BY ARCHITECT.
M	MARK ARCHITECTURE	SL2L-7-FLP-FL-80CRI-40K-400LMF MIN10-120-*--ZT	LED, 28W 2156 LUMENS	RECESSED	*-COLOR BY ARCHITECT.
ME	MARK ARCHITECTURE	SL2L-7-FLP-TG-80CRI-40K-400LMF MIN10-120-1E10WLCP-*--ZT	LED, 56W 4312 LUMENS	RECESSED	*-COLOR BY ARCHITECT. -WITH EMERGENCY BATTERY PACK.
M2	MARK ARCHITECTURE	SL2L-14-FLP-TG-80CRI-40K-400LMF MIN10-120-*--ZT	LED, 56W 4312 LUMENS	RECESSED	*-COLOR BY ARCHITECT.
MM	MARK ARCHITECTURE	SL2L-14-FLP-TG-80CRI-40K-400LMF MIN10-120-*--ZT-MODW7XC790C	LED, 56W 4312 LUMENS	RECESSED	*-COLOR BY ARCHITECT.
NN	MARK ARCHITECTURE	SL2L-5-FLP-FL-80CRI-40K-400LMF MIN10-120-*--ZT-MODW2XC390C	LED, 16W 1232 LUMENS	RECESSED	*-COLOR BY ARCHITECT.
O	MARK ARCHITECTURE	SL2L-3-FLP-FL-80CRI-40K-400LMF MIN10-120-*--ZT	LED, 12W 924 LUMENS	RECESSED	*-COLOR BY ARCHITECT.
Q	MARK ARCHITECTURE	SL2L-6-FLP-FL-80CRI-40K-400LMF MIN10-120-*--ZT	LED, 24W 1848 LUMENS	RECESSED	*-COLOR BY ARCHITECT.
R	MARK ARCHITECTURE	SL2L-4-FLP-FL-80CRI-40K-400LMF MIN10-120-*--ZT	LED, 16W 1232 LUMENS	RECESSED	*-COLOR BY ARCHITECT.
S	MARK ARCHITECTURE	SL2L-12-FLP-FL-80CRI-40K-400LMF MIN10-120-*--ZT	LED, 48W 3696 LUMENS	RECESSED	*-COLOR BY ARCHITECT.
T	MARK ARCHITECTURE	SL2L-8-FLP-FL-80CRI-40K-400LMF MIN10-120-*--ZT	LED, 32W 2464 LUMENS	RECESSED	*-COLOR BY ARCHITECT.
V	MARK ARCHITECTURE	SL2L-6-FLP-TG-80CRI-40K-600LMF MIN10-120-*--ZT	LED, 36W 3198 LUMENS	RECESSED	*-COLOR BY ARCHITECT.
W	MARK ARCHITECTURE	SL2L-4-FLP-TG-80CRI-40K-1000LMF MIN10-120-*--ZT	LED, 44W 3448 LUMENS	RECESSED	*-COLOR BY ARCHITECT.
X	LITHONIA	LQM-S-W-3-R-MVOLT-EL N	LED	UNIVERSAL	
Y	MARK ARCHITECTURE	SL2L-12-FLP-TG-80CRI-40K-600LMF MIN10-120-*--ZT	LED, 72W 3696 LUMENS	RECESSED	*-COLOR BY ARCHITECT.
YE	MARK ARCHITECTURE	SL2L-12-FLP-TG-80CRI-40K-600LMF MIN10-120-1E10WLCP-*--ZT	LED, 72W 3696 LUMENS	RECESSED	*-COLOR BY ARCHITECT. -WITH EMERGENCY BATTERY PACK.
Z	MARK ARCHITECTURE	SL2L-8-FLP-TG-80CRI-40K-1000LMF MIN10-120-*--ZT	LED, 88W 6896 LUMENS	RECESSED	*-COLOR BY ARCHITECT.
AA	VISA LIGHTING	CB6505-L40K-L-MVOLT-*	LED, 12W 1300 LUMENS	WALL	*-COLOR BY ARCHITECT.
BB	JUNO	UPLD-14IN-SWW4-90CRI-*	LED, 6.65W 75.03 LM/W	SURFACE	*-COLOR BY ARCHITECT.
CC	LITHONIA	4G1-*LED-L3LED-T24	LED, 8W 560 LUMENS	RECESSED	*-COLOR BY ARCHITECT.



305 HIGHWAY 51  
RIDGELAND, MS 39157  
VOICE (601) 605-4820  
FAX (601) 605-4875  
TPS PROJ. # 21094



PEARL HIGH SCHOOL  
INDOOR TRAINING FACILITY

PEARL PUBLIC SCHOOL DISTRICT  
500 PIRATES COVE  
PEARL, MS 39208

23 AUG 2021

CONSTRUCTION DOCUMENTS  
WBA # 5820

REVISIONS		
NO.	DESCRIPTION	DATE
△	ADDENDUM #1	2021-09-03
△	ADDENDUM #2	2021-09-10
△	ADDENDUM #3	2021-09-13
△	ADDENDUM #6	2021-09-20

E0.0  
ELECTRICAL  
LEGEND

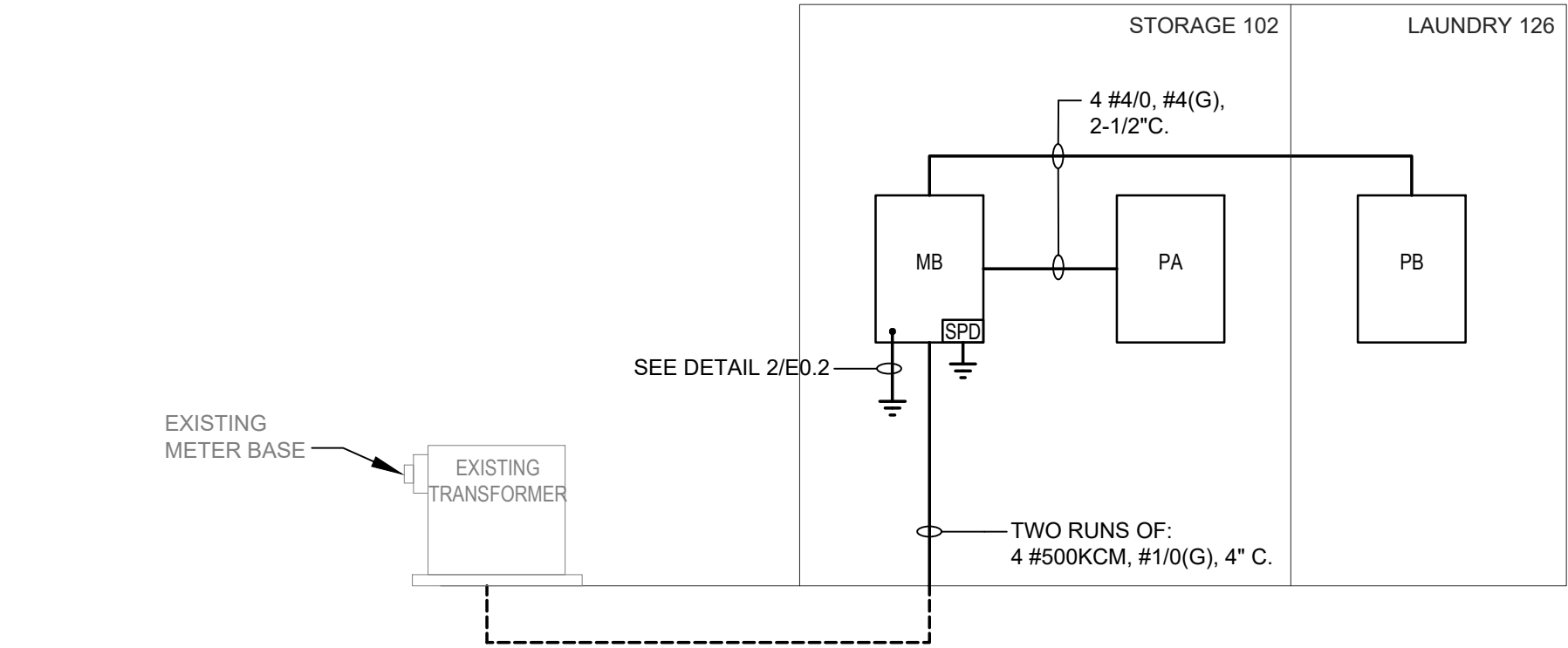
PANEL MB			LOCATION: ELECTRICAL ROOM VOLT: 208Y/120V, 3Ø, 4W BUS: 800A		LUG LOCATION: MAIN BUS: MOUNTING:		BOTTOM FEED 800A MAIN BREAKER SURFACE		PANELBOARD AIC RATING (A): 22,000				
CIRCUIT NO.	BREAKER		DESCRIPTION	PHASE LOAD (KVA)						DESCRIPTION	BREAKER		CIRCUIT NO.
	AMPS	POLES		A		B		C			AMPS	POLES	
1	225	3	PANEL PA	18.5	6.6					PANEL PB	225	3	2
3	-	-	-			16.3	4.8			-	-	-	4
5	-	-	-					18.5	4.4	-	-	-	6
7	200	3	RTU-1	15.6	4.6					RTU-2	60	3	8
9	-	-	-			15.6	4.6			-	-	-	10
11	-	-	-					15.6	4.6	-	-	-	12
13	200	3	HRU-1	15.3	0.0					SPARE	200	3	14
15	-	-	-			15.3	0.0			-	-	-	16
17	-	-	-					15.3	0.0	-	-	-	18
19	125	3	SPARE	0.0	0.0					SPARE	125	3	20
21	-	-	-			0.0	0.0			-	-	-	22
23	-	-	-					0.0	0.0	-	-	-	24
25	15	3	WASHER	0.9	0.9					WASHER	15	3	26
27	-	-	-			0.9	0.9			-	-	-	28
29	-	-	-					0.9	0.9	-	-	-	30
31			SPACE	0.0	0.5					SUMP PUMP	20	1	32
33			SPACE			0.0	0.5			SUMP PUMP	20	1	34
35			SPACE					0.0	0.0	SPACE			36
37			SPACE	0.0	0.0					SPACE			38
39			SPACE			0.0	0.0			SPACE			40
41			SPACE					0.0	0.0	SPACE			42
TOTAL				63.0		59.0		60.3					

6

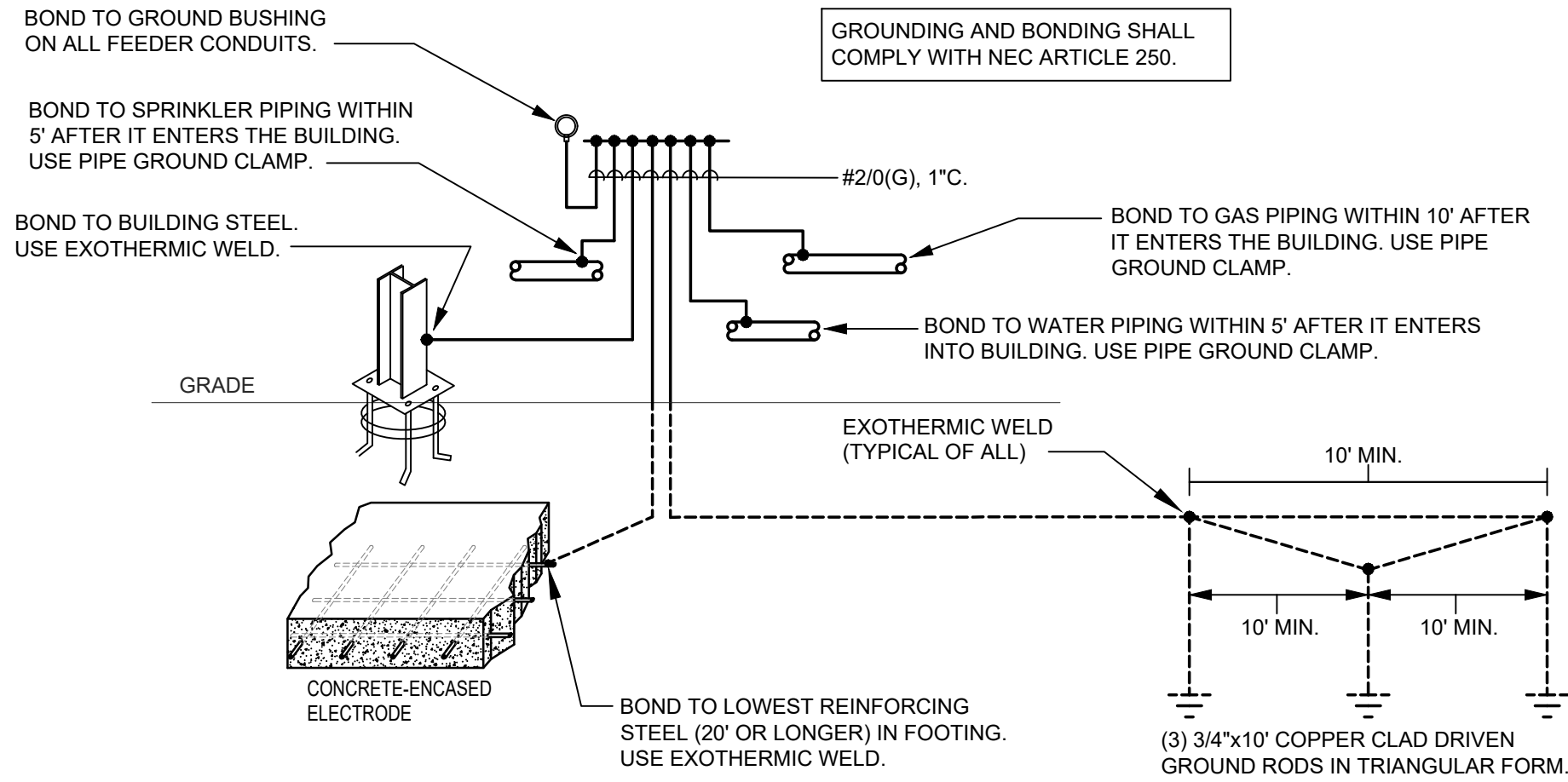
PANEL PA			LOCATION: ELECTRICAL ROOM VOLT: 208Y/120V, 3Ø, 4W BUS: 225A		LUG LOCATION: MAIN BUS: MOUNTING:		TOP FEED MAIN LUGS ONLY SURFACE		PANELBOARD AIC RATING (A): 22,000				
CIRCUIT NO.	BREAKER		DESCRIPTION	PHASE LOAD (KVA)			DESCRIPTION	BREAKER		CIRCUIT NO.			
	AMPS	POLES		A	B	C		AMPS	POLES				
1	20	1	LTS. - CONCESSION, LAUNDRY, UNIFORM VESTIBULE	1.2	1.1		EXTERIOR REC.	20	1	2			
3	20	1	LTS. - RR, PLAYERS RR, STOR. TRAIN, ELEC.		1.0	0.7	EXTERIOR REC.	20	1	4			
5	20	1	LTS. - LOCKER RM			1.4	0.7	EXTERIOR REC.	20	1	6		
7	20	1	LTS. - WEIGHT RM	0.7	0.5		REC. WEIGHT/EXTERIOR	20	1	8			
9	20	1	LTS. - OFFICES, TEAM RM, COACH LUNGE, HEAD COACH		1.3	0.4	REC. RM 102	20	1	10			
11	20	2	DCU-01 / DSS-01			1.5	0.9	REC. RM 103/ WEIGHT	20	1	12		
13	-	-	-	1.5	0.7		REC. RM 103	20	1	14			
15	20	1	FIRE ALARM CONTROL PANEL		0.5	1.1	REC. RM 104/WEIGHT	20	1	16			
17	20	1	FIRE ALARM BELL			0.5	1.4	REC. RM 105	20	1	18		
19	20	1	LTS. - (PRACTICE FIELD)	1.3	1.4		REC. RM 106/107	20	1	20			
21	20	1	LTS. - (PRACTICE FIELD)		1.3	0.9	REC. RM 107/108	20	1	22			
23	20	1	LTS. - (PRACTICE FIELD)			1.3	0.7	REC. RM 108/WEIGHT	20	1	24		
25	20	1	LTS. - (PRACTICE FIELD)	1.3	1.1		REC. RM 108/109	20	1	26			
27	20	1	LTS. - (PRACTICE FIELD)		1.3	0.5	REC. RM 109/110	20	1	28			
29	20	1	LTS. - (PRACTICE FIELD)			1.3	1.4	REC. RM 109/111	20	1	30		
31	20	1	LTS. - (PRACTICE FIELD)	1.3	0.5		REC. WEIGHTS	20	1	32			
33	20	1	LTS. - (PRACTICE FIELD)		1.3	0.5	LVR-01	20	1	34			
35	20	1	LTS. - (PRACTICE FIELD)			1.3	0.5	WH-01 AND CP-01	20	1	36		
37	20	1	LTS. - (PRACTICE FIELD)	1.3	0.8		REC. COACH LOUNGE 109	20	1	38			
39	20	1	LTS. - (PRACTICE FIELD)		1.3	1.3	LTS. - (PRACTICE FIELD)	20	1	40			
41	20	1	LTS. - (PRACTICE FIELD)			1.3	1.3	LTS. - (PRACTICE FIELD)	20	1	42		
43	20	1	LTS. - (PRACTICE FIELD)	1.3	0.5		CONTACTOR C1	20	1	44			
45	20	1	LTS. - (PRACTICE FIELD)		1.3	0.5	POWER FOR SIGNAGE	20	1	46			
47	20	1	LTS. - (PRACTICE FIELD)			1.3	0.5	FIRE ALARM ANNUNCIATOR PANEL	20	1	48		
49	20	1	LTS. - (PRACTICE FIELD)	1.3	0.8		POWER FOR TELEVISIONS	20	1	50			
51	20	1	LTS. - (PRACTICE FIELD)		1.3	0.0	SPARE	20	1	52			
53	20	1	LTS. - (PRACTICE FIELD)			1.3	0.0	SPARE	20	1	54		
TOTAL				18.5	16.3	18.5	* GFCI BREAKER						

6

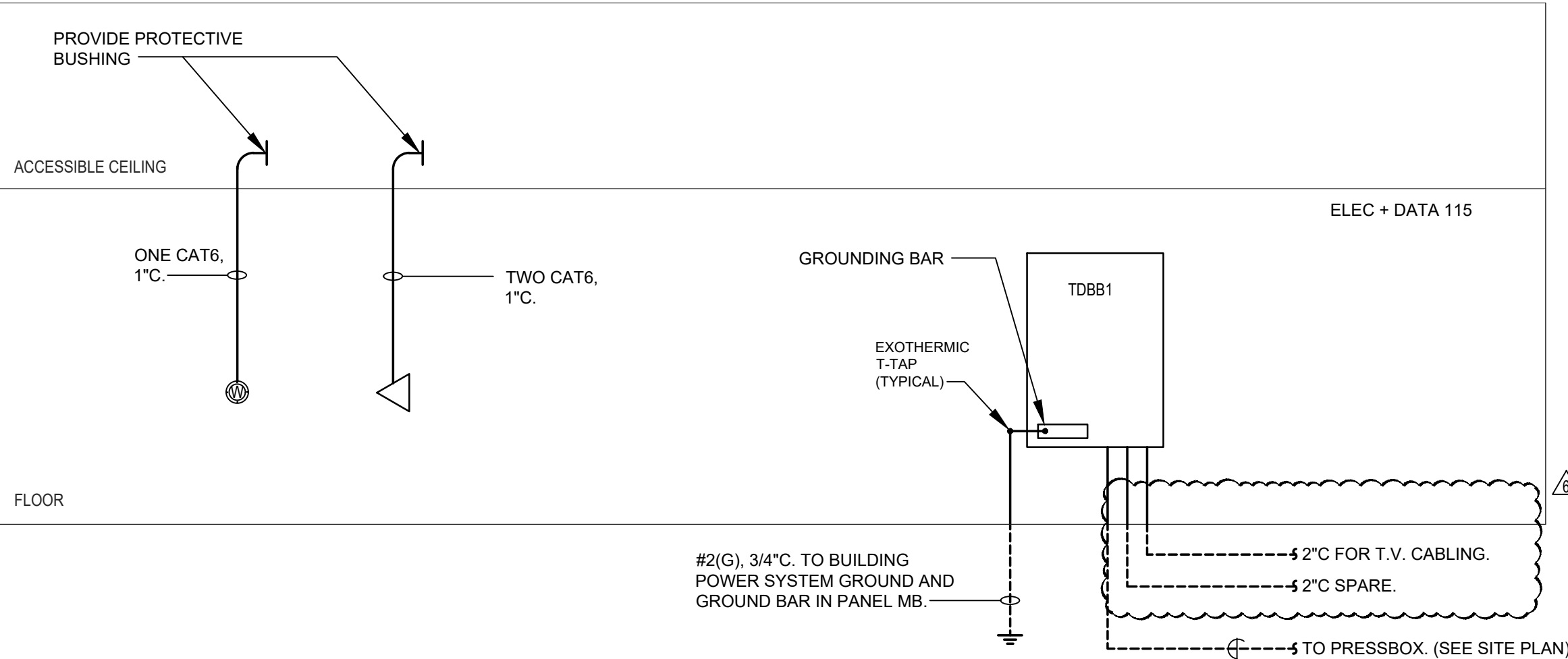
PANEL PB			LOCATION: ELECTRICAL ROOM VOLT: 208Y/120V, 3Ø, 4W BUS: 225A	LUG LOCATION: MAIN BUS: MOUNTING:	TOP FEED MAIN LUGS ONLY SURFACE	PANELBOARD AIC RATING (A): 22,000						
CIRCUIT NO.	BREAKER		DESCRIPTION	PHASE LOAD (KVA)			DESCRIPTION	BREAKER		CIRCUIT NO.		
	AMPS	POLES		A	B	C		AMPS	POLES			
1	20	2	FREEZER CONDENSING UNIT	0.7	1.1		EXTERIOR REC.	20	1	2		
3	-	-	-		0.7	0.7	EXTERIOR REC.	20	1	4		
5	20	2	COOLER CONDENSING UNIT			0.7	0.7	EXTERIOR REC.	20	1	6	
7	-	-	-	0.7	0.7		LAUNDRY REC.	*20	1	8		
9	15	2	COOLER EVAPORATOR		0.1	1.0	DRYER	20	1	10		
11	-	-	-			0.1	1.0	DRYER	20	1	12	
13	15	2	FREEZER EVAPORATOR	0.3	0.8		REC. - (ICE MAKER) TRAINING	20	1	14		
15	-	-	-		0.3	0.0	SPARE	20	1	16		
17	20	1	LTS. - COOLER/FREEZER			0.5	0.5	RESTROOM REC.	20	1	18	
19	20	1	REC. - CONCESSION	0.2	0.5		REC. RM 125, 122, 120	20	1	20		
21	20	1	REC. - CONCESSION		0.2	0.5	REC. KITCHEN GFI	20	1	22		
23	20	1	REC. - CONCESSION			0.2	0.4	REC. RM 113, 115	20	1	24	
25	20	1	REC. - CONCESSION	0.2	1.1		REC. RM 121, 120	*20	1	26		
27	20	1	REC. - CONCESSION		0.2	0.9	REC. RM 119	20	1	28		
29	20	1	REC. - CONCESSION			0.2	0.0	SPARE	20	1	30	
31	20	1	REC. - CONCESSION	0.2	0.0		SPARE	20	1	32		
33	20	1	REC. - CONCESSION		0.2	0.0	SPARE	20	1	34		
35	20	1	REC. - CONCESSION			0.2	0.0	SPARE	20	1	36	
37	20	1	REC. - CONCESSION	0.2	0.0		SPARE	20	1	38		
39	20	1	LTS. - EXTERIOR			0.1	0.0	SPARE	20	1	40	
41	20	1	SPARE				0.0	0.0	SPARE	20	1	42
43	20	1	SPARE	0.0	0.0		SPARE	20	1	44		
45	20	1	SPARE		0.0	0.0	SPARE	20	1	46		
47	20	1	SPARE				0.0	0.0	SPARE	20	1	48
49	20	1	SPARE	0.0	0.0		SPARE	20	1	50		
51	20	1	SPARE			0.0	0.0	SPARE	20	1	52	
53	20	1	SPARE			0.0	0.0	SPARE	20	1	54	
TOTAL				6.6	4.8	4.4	* GFCI BREAKER					



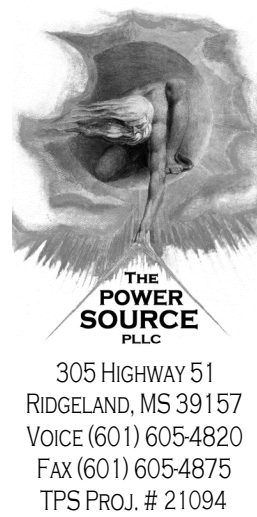
1 ONE LINE DIAGRAM  
Scale: NONE



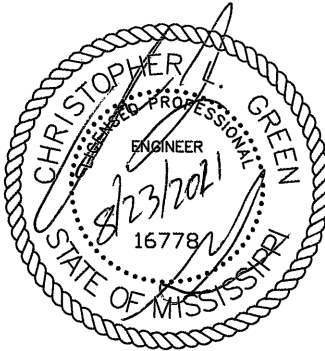
2 GROUNDING DETAIL  
Scale: NONE



3 TELEPHONE/DATA RISER DIAGRAM  
Scale: NONE



305 HIGHWAY 51  
RIDGELAND, MS 39157  
VOICE (601) 605-4820  
FAX (601) 605-4875  
TPS Proj. # 21094



PEARL HIGH  
SCHOOL  
INDOOR  
TRAINING  
FACILITY

PEARL PUBLIC  
SCHOOL DISTRICT  
500 PIRATES COVE  
PEARL, MS 39208

23 AUG 2021

CONSTRUCTION DOCUMENTS  
WBA # 5820

REVISIONS		
NO.	DESCRIPTION	DATE
△	ADDENDUM #1	2021-09-03
△	ADDENDUM #2	2021-09-10
△	ADDENDUM #3	2021-09-13
△	ADDENDUM #6	2021-09-20

E0.2  
ELECTRICAL  
DETAILS



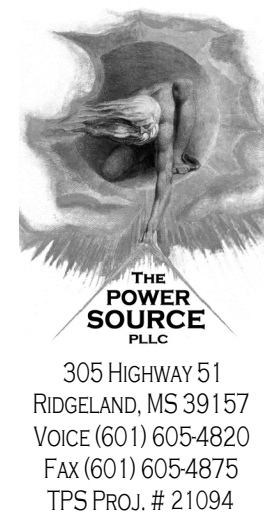
SITE WIRE LEGEND:  
— EUP — EXISTING UNDERGROUND PRIMARY  
— NUC — NEW UNDERGROUND FIBER FOR COMMUNICATIONS

1 ELECTRICAL SITE PLAN  
E0.3 Scale: 1" = 40'-0"

23 AUG 2021

CONSTRUCTION DOCUMENTS  
WBA # 5820

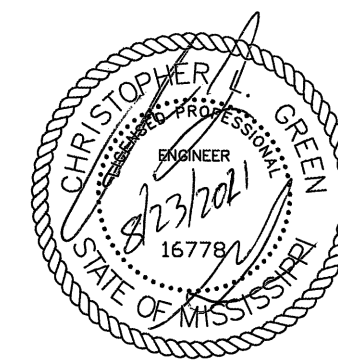
REVISIONS		
NO.	DESCRIPTION	DATE
1	ADDENDUM #1	2021-09-03
2	ADDENDUM #2	2021-09-10
3	ADDENDUM #3	2021-09-13
4	ADDENDUM #4	2021-09-13
5	ADDENDUM #5	2021-09-20
6	ADDENDUM #6	2021-09-20



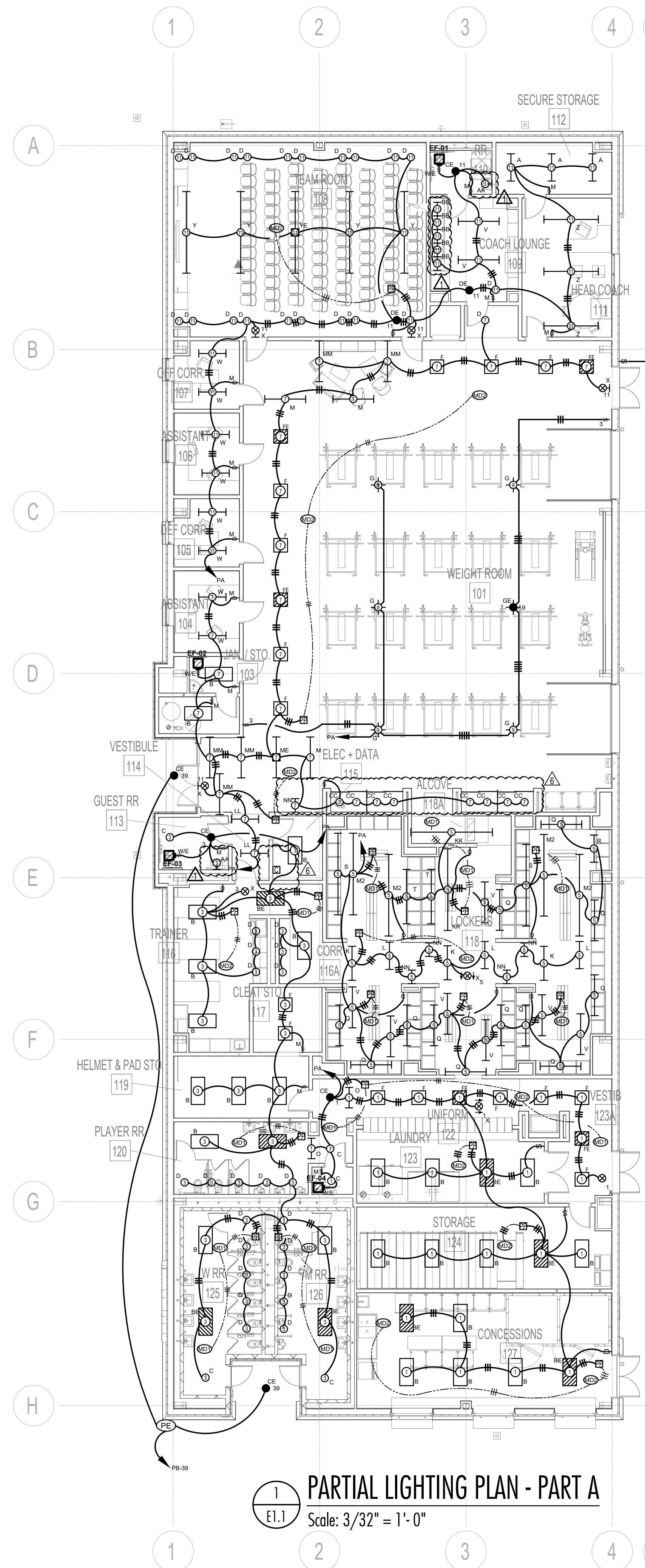
305 HIGHWAY 51  
RIDGELAND, MS 39157  
VOICE (601) 605-4820  
FAX (601) 605-4875  
TPS PROJ. # 21094



PEARL HIGH  
SCHOOL  
INDOOR  
TRAINING  
FACILITY



PEARL PUBLIC  
SCHOOL DISTRICT  
500 PIRATES COVE  
PEARL, MS 39208



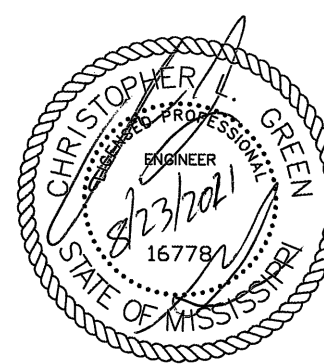
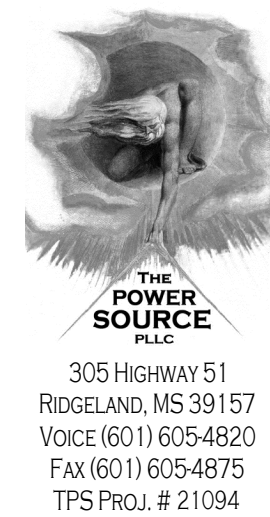
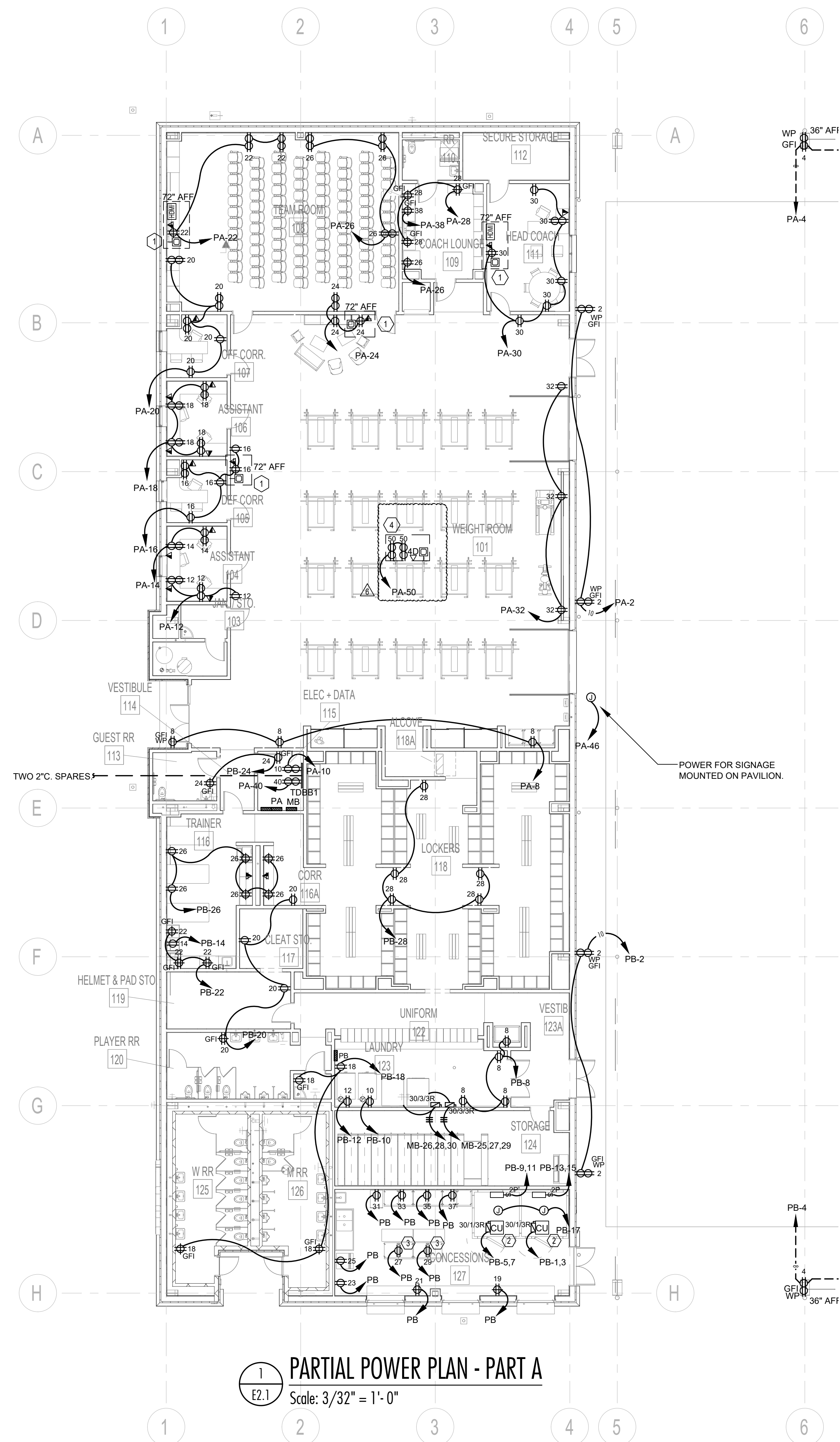
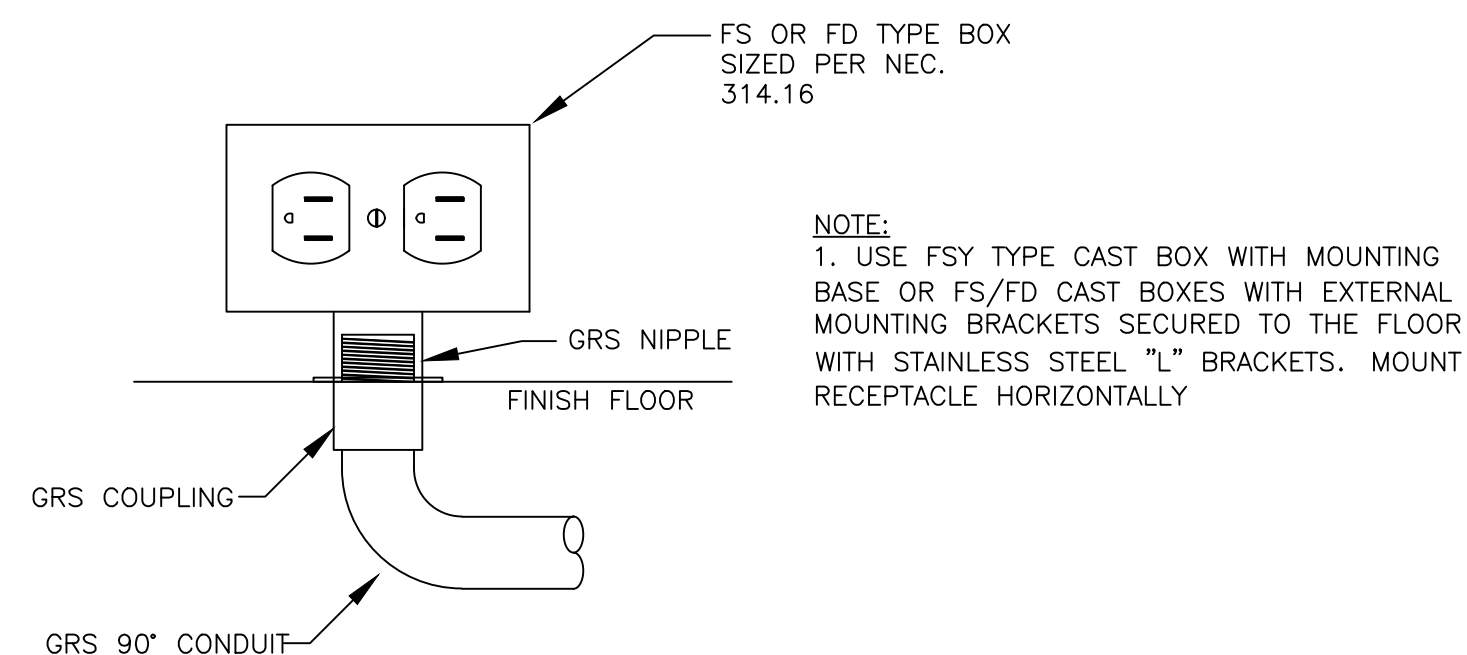
23 AUG 2021

CONSTRUCTION DOCUMENTS  
WBA # 5820

REVISIONS		
NO.	DESCRIPTION	DATE
1	ADDENDUM #1	2021-09-03
2	ADDENDUM #2	2021-09-10
3	ADDENDUM #3	2021-09-13
4	ADDENDUM #6	2021-09-20

E1.1  
PARTIAL LIGHTING  
PLAN - PART A

KEYED NOTES	
Mark	Description
①	PROVISIONS FOR TELEVISION. VERIFY MOUNTING HEIGHT AND EXACT LOCATION WITH ARCHITECT PRIOR TO ROUGH-IN.
②	VERIFY LOCATION OF FREEZER/COOLER CONDENSING UNITS PRIOR TO ROUGH-IN.
③	SEE DETAIL ???.
④	PROVISIONS FOR CEILING MOUNTED TELEVISIONS. VERIFY MOUNTING HEIGHT AND EXACT LOCATION PRIOR TO ROUGH-IN.



**PEARL HIGH  
SCHOOL  
INDOOR  
TRAINING  
FACILITY**

**PEARL PUBLIC  
SCHOOL DISTRICT**  
500 PIRATES COVE  
PEARL, MS 39208

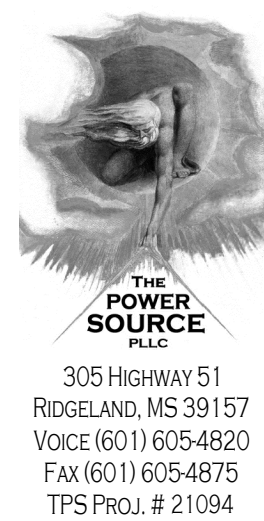
23 AUG 2021

**CONSTRUCTION DOCUMENTS**  
WBA # 5820

REVISIONS		
NO.	DESCRIPTION	DATE
1	ADDENDUM #1	2021-09-03
2	ADDENDUM #2	2021-09-10
3	ADDENDUM #3	2021-09-13
6	ADDENDUM #6	2021-09-20

## E2.1

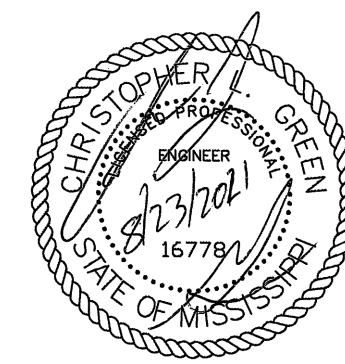
PARTIAL POWER  
PLAN - PART B



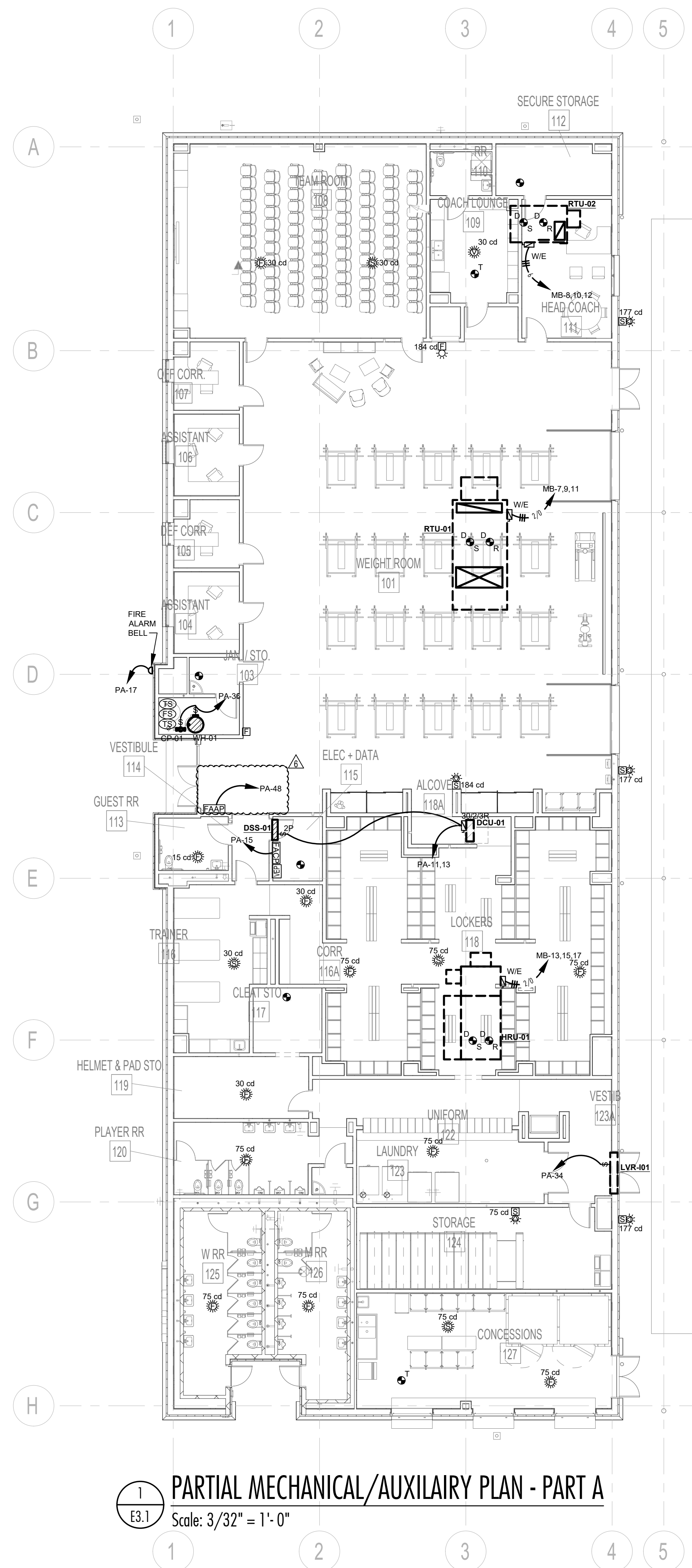
305 HIGHWAY 51  
RIDGELAND, MS 39157  
VOICE (601) 605-4820  
FAX (601) 605-4875  
TPS Proj. # 21094



PEARL HIGH  
SCHOOL  
INDOOR  
TRAINING  
FACILITY



PEARL PUBLIC  
SCHOOL DISTRICT  
500 PIRATES COVE  
PEARL, MS 39208



23 AUG 2021

CONSTRUCTION DOCUMENTS  
WBA # 5820

REVISIONS		
NO.	DESCRIPTION	DATE
1	ADDENDUM #1	2021-09-03
2	ADDENDUM #2	2021-09-10
3	ADDENDUM #3	2021-09-13
4	ADDENDUM #6	2021-09-20

E3.1  
PARTIAL  
MECH./AUX.  
PLAN - PART B