



August 30, 2023

Project Name: Madison County Schools - New Tennis Complex

Project Number: 23-034

## ADDENDUM NO. 05

### **NOTICE TO ALL DOCUMENT HOLDERS:**

The following additions, deletions, changes and clarifications to the drawings and specifications are to be included as part of the Contract Documents.

### **GENERAL**

#### ITEM NO. 01 **POST TENSION SLAB CLARIFICATIONS**

Contractors may field adjust post-tension tendon spacing along chamfered court edges (corners) to avoid anchor conflicts. **Revisions** to tendon spacing are to be reviewed and approved by the Engineer prior to placing concrete.

#### ITEM NO. 02 **POST TENSION SLAB BASE-BID CLARIFICATIONS**

Should Alternate No. 2 **NOT** be accepted, the post-tension slab for courts 9-12 shall have these changes:

1. **Omit** intermediate stress joint
2. **Reduce** tendon length to 122 LF, each way.
3. **Revise** tendon spacing to +/- 35" O.C., each way

#### ITEM NO. 03 **Civil Clarifications**

1. The roof drain trunk line is 10". The lines to the gutters shall match the gutter size or be 1 size larger.
2. For the 10" roof drain, the clean-out riser can be 6".
3. The 2.5" water service line is Sch. 40 PVC.
4. For the relocation of the fire hydrant, the contractor's bid should include a tapping sleeve for a live connection. We are unsure if the water main can be shut off at this time.
5. Should Alternate 2 not be included in the award, the contractor shall add 250' of Vinyl Chain Link Fence and 1,000.0 sq. ft. of light-duty concrete to the north side of Courts 9 and 10. All other quantities (i.e. light-duty concrete, post-tensioned slabs, storm inlets, piping, trench drain, retaining wall, erosion control, lighting, incidentals, etc.) shall be adjusted accordingly for the Base Bid.



- ITEM NO. 04      **Chain Link Fencing Clarification**
1. For **Fence Type 1**, the member sizes are called out in spec 32.3113 and is the perimeter security fence as called out on sheet A001.
  2. For **Tennis Fence Run**, the member sizes are called out in detail 5/A104 and is the fence that surrounds the tennis courts as called out on sheet A104.
  3. The detail for the 4' high fence is covered in note A in detail 5/A104

### **SPECIFICATIONS**

- ITEM NO. 05      **01.2100 Allowances**  
**Part 1, Paragraph 5: Allowances Schedule**  
**ADD** the following to the Allowance Schedule:  
F. Lime Allowance: Include the stipulated sum/price of \$165,000 for the purchase, mixing, shaping, and compaction of lime material. Allowance to be used upon Architect's and/or Owner's instructions.

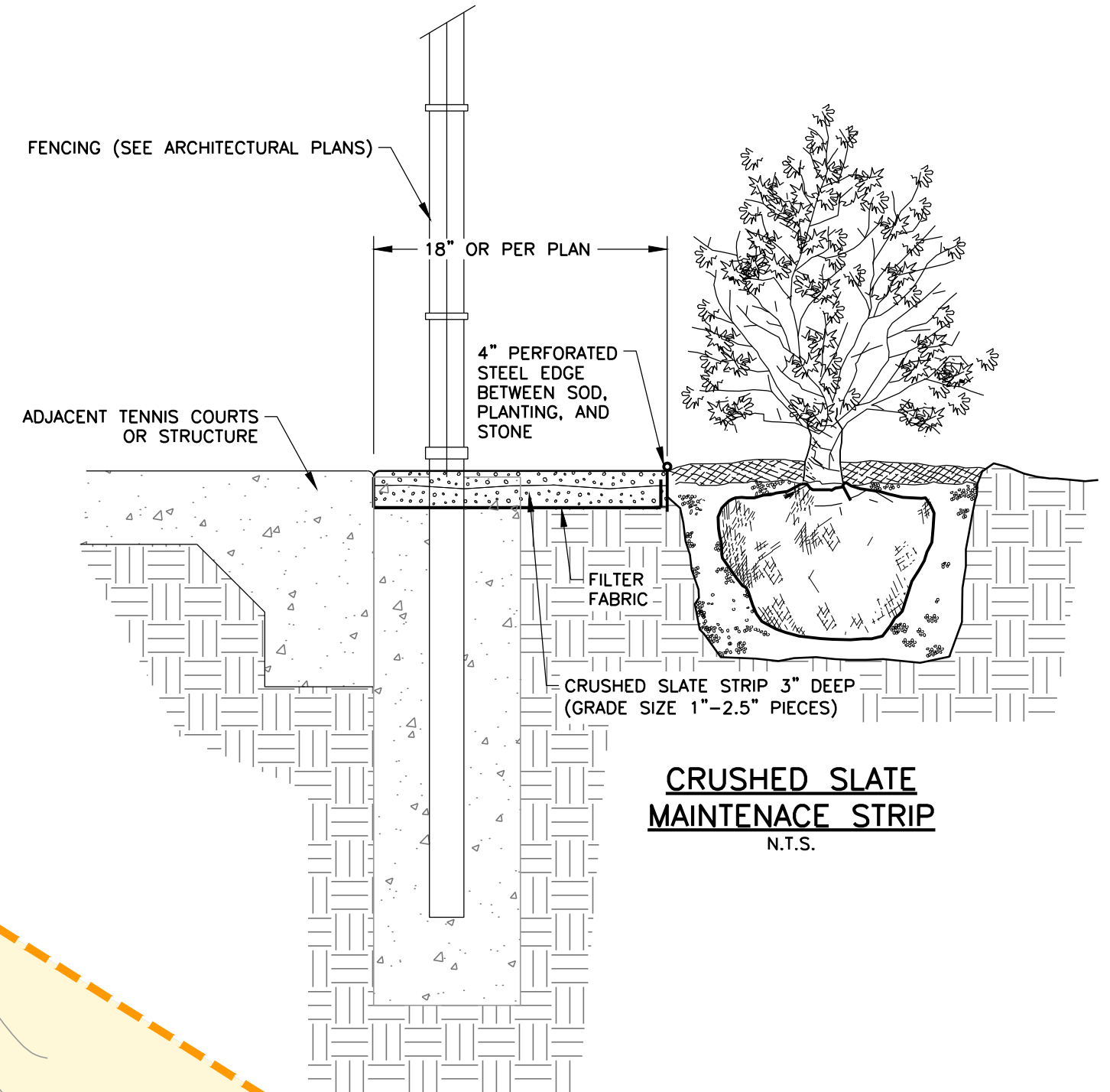
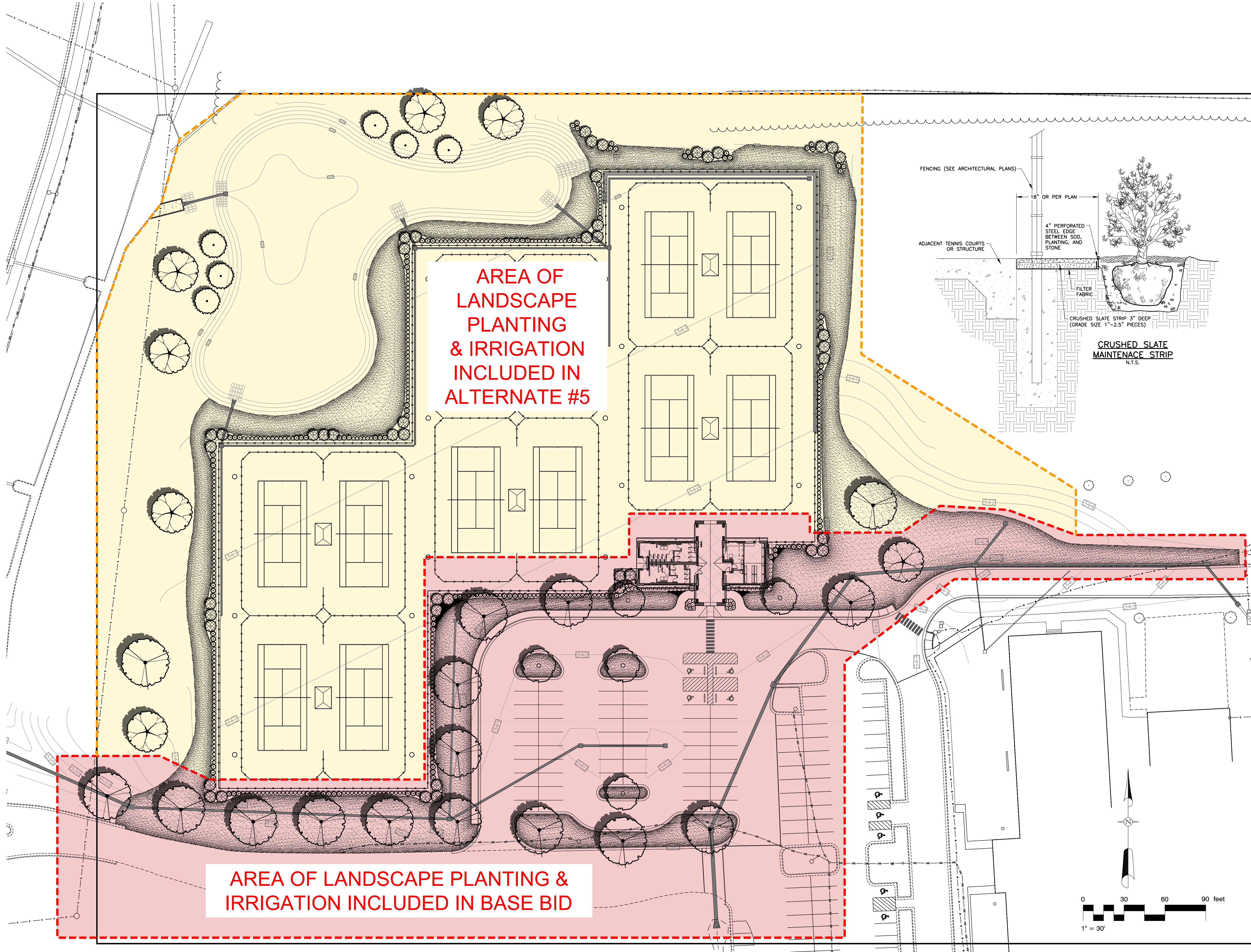
- ITEM NO. 06      **26.5668 Athletic Field Lighting Systems**  
**Part 3, Paragraph 3.4, Item D. "Surge Protection."**  
**Revise** item to read as follows: *"Provide on each electrical panelboard serving System power or control wiring."*  
*Clarification:* Revision **deletes** reference to Specification Section 26.4313 "Surge Protection Devices." Surge Protection shall be provided by the Athletic Field Lighting Systems Manufacturer to meet the requirements and specifications of the system.

- ITEM NO. 07      **32.3113 Chain Link Fences and Gates**  
**Part 2, Paragraph 7: Swing Gates**  
**Revise** the first line of the chart in paragraph B to read for gates up to 12 ft.

### **DRAWINGS**

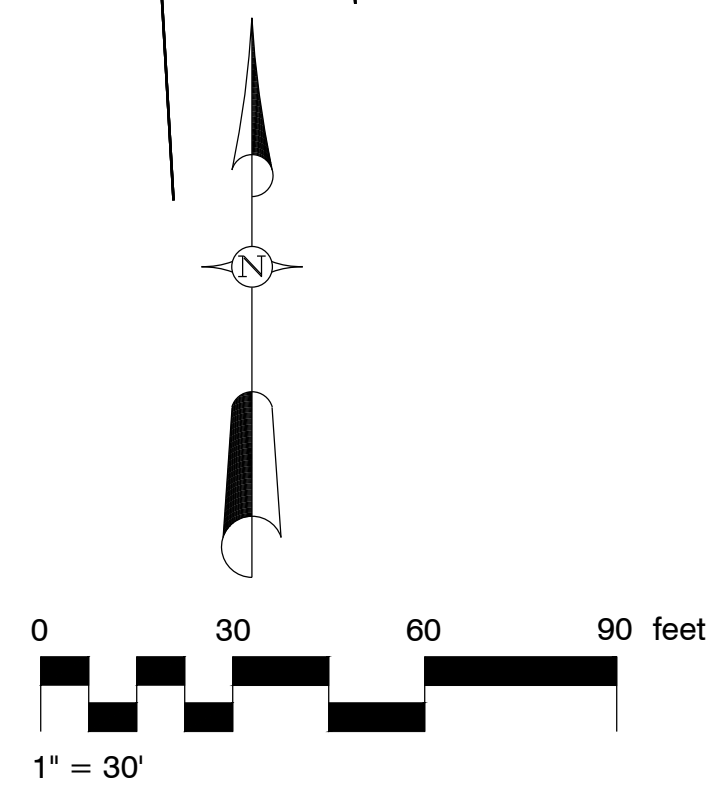
- ITEM NO. 08      **Sheet L1.0 LANDSCAPE PHASING PLAN**  
**ADD** sheet **L1.0**, with the attached **revised L1.0**  
*Clarification:* Sheet **adds** the extents of landscaping to be installed in the base bid and the extents of landscaping to be installed as alternate #5. Sheet also **ADDS** a detail for the maintenance strip perimeter around the complex.

Encl:    **RFIs:** n/a  
          **Specifications** (8.5x11): n/a  
          **Drawings** (24x36): L1.0  
Cc:      All document holders  
          File : 23-034/C/C2



**AREA OF LANDSCAPE PLANTING & IRRIGATION INCLUDED IN BASE BID**

**AREA OF LANDSCAPE PLANTING & IRRIGATION INCLUDED IN ALTERNATE #5**



**L1.0**  
LANDSCAPE  
PHASING PLAN