



02 December 2021

GS#610-012 MCM LeFleur's Bluff Park Improvements (Phase 1B)
Mississippi Department of Wildlife, Fisheries, and Parks

ADDENDUM NO. 02

NOTICE TO ALL DOCUMENT HOLDERS:

The following additions, deletions, changes and clarifications to the drawings and specifications are to be included as part of the Contract Documents.

CLARIFICATIONS

- ITEM NO. 01** **Anchor Bolts**
Contractor's Option: Embedded anchors are acceptable, if preferred. Anchors shall be embedded 10" into concrete with 2 nuts on the embedded end.
- ITEM NO. 02** **Landscaping**
Scope of landscaping is limited to seeding and grassing. All other landscaping/planting will not be included.

CIVIL

- ITEM NO. 03** **C300 – Site Plan – Civil**
REPLACE sheet with the attached **C300**.
Adds water source connection for hose bibb.

ARCHITECTURAL

- ITEM NO. 04** **A301 – Details – Architectural**
REPLACE sheet with the attached **A301**.
*Revises handrail detail.
Clarifies exposed steel finish.*

ELECTRICAL

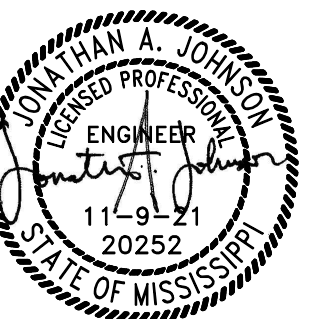
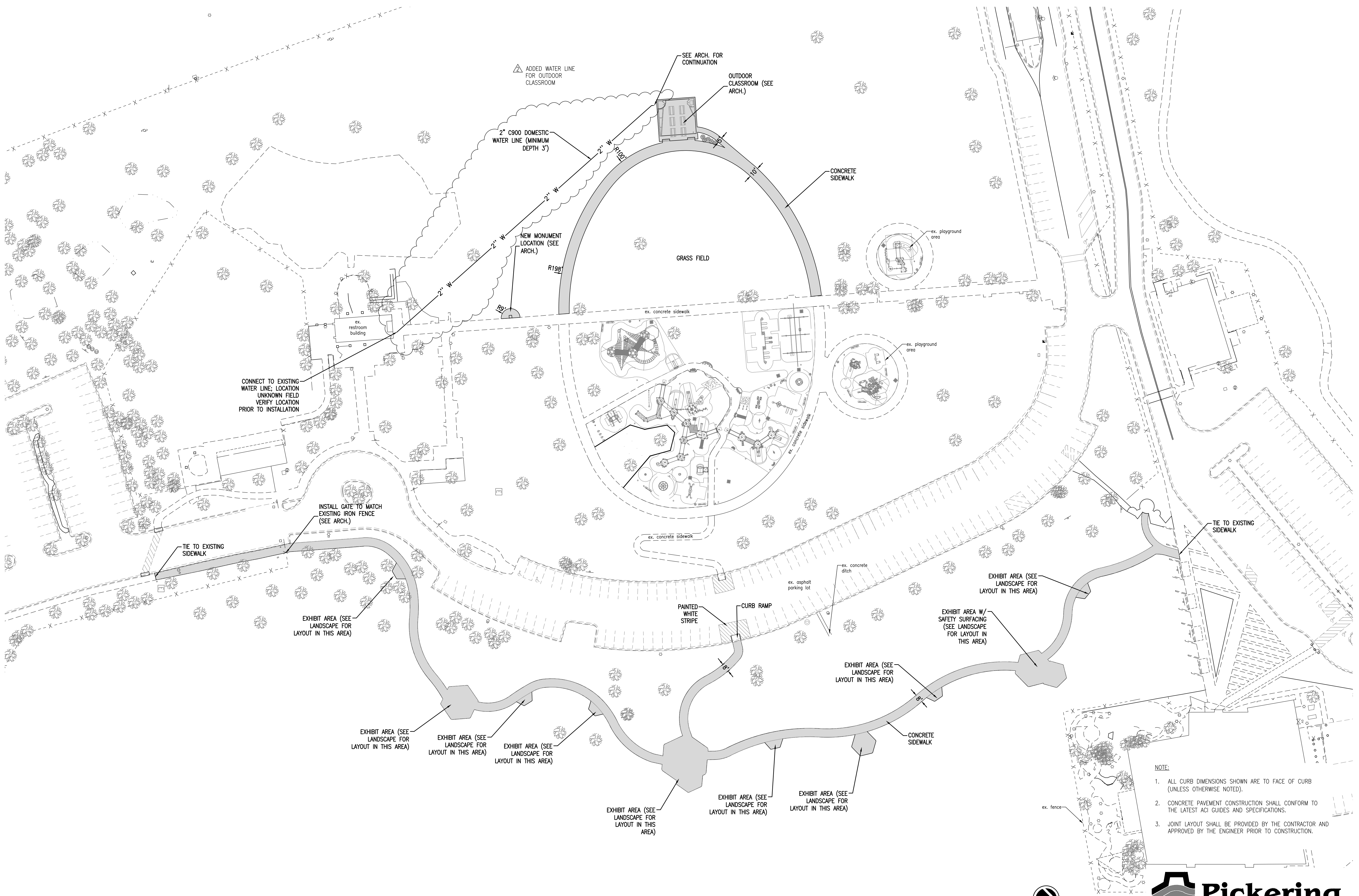
- ITEM NO. 05** **E0.0 – Electrical Legend – Electrical**
REPLACE sheet with the attached **E0.0**.
Adds pole mounted receptacles to panel schedule.

ITEM NO. 06 **E1.1 – Renovation Site Plan – 1B – Electrical**
REPLACE sheet with the attached **E1.1.**
Adds pole mounted receptacles to scope of work.

Encl: **Drawings (4 Sheets - 24x36):**
C300 – Site Plan
A301 – Details
E0.0 – Electrical Legend
E1.1 – Renovation Site Plan 1B

cc: All Document Holders
File 3517





09 NOVEMBER 2021

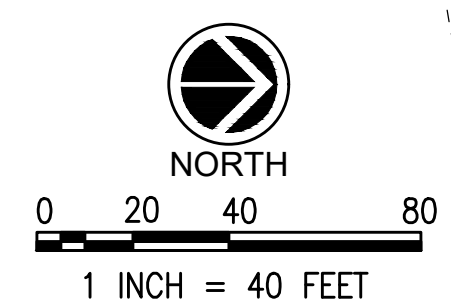
CONSTRUCTION
DOCUMENTS

WBA # 0619

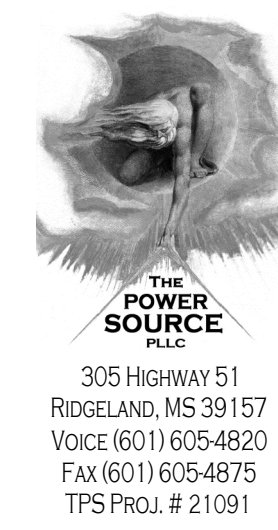
REVISIONS

NO.	DESCRIPTION	DATE
1	ADDENDUM #1	11-17-21
2	ADDENDUM #2	12-2-21

- NOTE:
1. ALL CURB DIMENSIONS SHOWN ARE TO FACE OF CURB (UNLESS OTHERWISE NOTED).
 2. CONCRETE PAVEMENT CONSTRUCTION SHALL CONFORM TO THE LATEST ACI GUIDES AND SPECIFICATIONS.
 3. JOINT LAYOUT SHALL BE PROVIDED BY THE CONTRACTOR AND APPROVED BY THE ENGINEER PRIOR TO CONSTRUCTION.



Pickering
Pickering Firm, Inc.
Facility Design • Civil Engineering • Surveying •
Transportation • Natural / Water Resources
2001 Airport Road, Suite 201
Flowood, MS 39232
601.956.3663



GS# 610-012
MCM LEFLEUR'S
BLUFF PARK
IMPROVEMENTS
(PHASE 1B)

MISSISSIPPI
DEPARTMENT OF
WILDLIFE, FISHERIES,
AND PARKS
Riverside Park Circle
Jackson, MS 39202

ELECTRICAL LEGEND

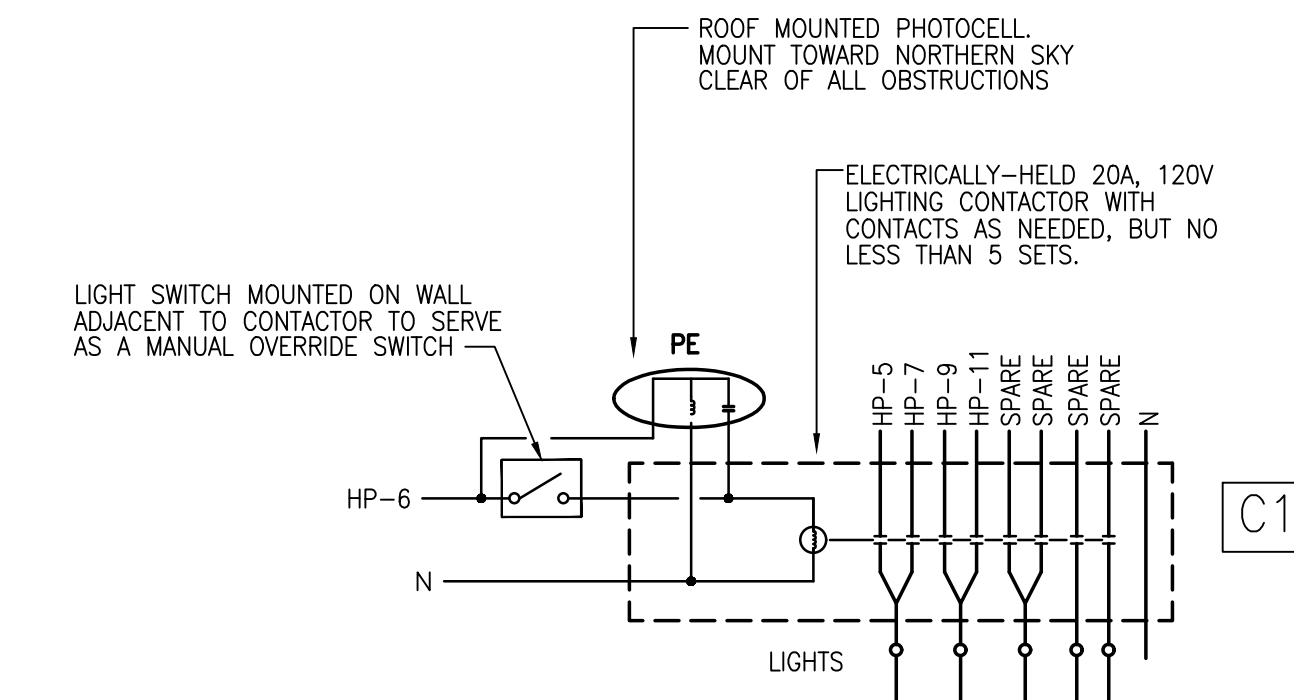
GENERAL NOTES	CONDUIT AND WIRING																											
<p>1. ALL EQUIPMENT AND DEVICES ARE TO BE FLUSH MOUNTED UNLESS OTHERWISE NOTED.</p> <p>2. DEVICES NOTED AS "GFI" SHALL BE GROUND FAULT CIRCUIT INTERRUPTING DEVICES.</p> <p>3. DEVICES NOTED AS "WIP" SHALL BE WEATHERPROOF WHILE-IN-USE.</p> <p>4. DEVICES NOTED AS "DL" SHALL BE RATED FOR DAMP LOCATION.</p> <p>5. PROVIDE UNSWITCHED POWER TO EMERGENCY BATTERY PACKS.</p>	<p>CONDUCTORS IN CONDUIT CONCEALED WITHIN WALL OR CEILING. TIC MARKS INDICATE NUMBER OF CONDUCTORS. THE EQUIPMENT GROUNDING CONDUCTOR IS NOT SHOWN, BUT SHALL BE PROVIDED. SIZE THE EQUIPMENT GROUNDING CONDUCTOR AND THE CONDUIT PER THE NEC. THE ABSENCE OF TIC MARKS SIGNIFIES THAT TWO CONDUCTORS PLUS AN EQUIPMENT GROUNDING CONDUCTOR SHOULD BE PROVIDED. FOR EXAMPLE, THE MARKINGS TO THE LEFT SIGNIFY THAT THREE CONDUCTORS PLUS AN EQUIPMENT GROUNDING CONDUCTOR SHOULD BE PROVIDED.</p>																											
<p>LUMINAIRES (See Light Fixture Schedule)</p> <p>NOTE: THE NUMBER INSIDE THE CIRCLE IS THE CIRCUIT NUMBER. THE LETTER BESIDE THE SYMBOL IS THE FIXTURE TYPE DESCRIBED IN THE LIGHT FIXTURE SCHEDULE.</p>	<p>THE TEXT INSIDE THE ARC INDICATES THE AWG SIZE OF THE CONDUCTORS THAT SHALL BE RUN IN THE CONDUIT. THE ABSENCE OF TEXT SIGNIFIES THAT THE CONDUCTORS SHOULD BE #12 AWG.</p>																											
<p>⊙ ? SITE POLE TOP LIGHT FIXTURE.</p> <p>⊕ ? WALL MOUNTED LINEAR FIXTURE.</p>	<p>CONDUCTORS IN CONDUIT CONCEALED BELOW GRADE OR FLOOR. TIC MARKS INDICATE NUMBER OF CONDUCTORS. THE EQUIPMENT GROUNDING CONDUCTOR IS NOT SHOWN, BUT SHALL BE PROVIDED. SIZE THE EQUIPMENT GROUNDING CONDUCTOR AND THE CONDUIT PER THE NEC. THE ABSENCE OF TIC MARKS SIGNIFIES THAT TWO CONDUCTORS PLUS AN EQUIPMENT GROUNDING CONDUCTOR SHOULD BE PROVIDED. THE MARKINGS TO THE LEFT SIGNIFY THAT THREE CONDUCTORS PLUS AN EQUIPMENT GROUNDING CONDUCTOR SHOULD BE PROVIDED.</p>																											
<p>SWITCHES</p> <p>⊙ SINGLE-POLE, SINGLE-THROW SWITCH. MOUNT CENTERLINE OF BOX AT 45"A.F.F. UNLESS NOTED OTHERWISE.</p> <p>⊕ LED DIMMER EQUAL TO LEVITON #P710-LFZ MOUNT CENTERLINE OF BOX AT 45"A.F.F. UNLESS NOTED OTHERWISE.</p>	<p>HOMERUN TO PANELBOARD. ARC DENOTES CONCEALED CIRCUITRY. TEXT DENOTES PANELBOARD NAME WITH CIRCUIT NUMBER. DEVICES HAVING CIRCUIT NUMBERS LOCATED BESIDE THEM MAY NOT SHOW THE CIRCUIT NUMBERS AT THE HOMERUN ARROWS.</p>																											
<p>GEAR</p> <p>⊙ ? PANELBOARD.</p>	<p>RECEPTACLES</p> <p>⊕ ? DUPLEX RECEPTACLE, NEMA 5-20R, MOUNTED 18" A.F.F. TO CENTERLINE OF BOX UNLESS NOTED OTHERWISE.</p>																											
<p>MISCELLANEOUS</p> <p>⊕ CONTACTOR.</p> <p>⊕ PHOTOCELL.</p>																												
<p>VOLTAGE DROP CHART FOR 20A, 1Ø CIRCUITS</p> <table border="1"> <thead> <tr> <th>Voltage</th> <th>Circuit Length</th> <th>Conductor Size (AWG)</th> </tr> </thead> <tbody> <tr> <td>120</td> <td>< 50'</td> <td>#12</td> </tr> <tr> <td>120</td> <td>> 50'</td> <td>#10</td> </tr> <tr> <td>120</td> <td>> 90'</td> <td>#8</td> </tr> <tr> <td>120</td> <td>> 140'</td> <td>#6</td> </tr> <tr> <td>277</td> <td>< 130'</td> <td>#12</td> </tr> <tr> <td>277</td> <td>> 130'</td> <td>#10</td> </tr> <tr> <td>277</td> <td>> 200'</td> <td>#8</td> </tr> <tr> <td>277</td> <td>> 330'</td> <td>#6</td> </tr> </tbody> </table>	Voltage	Circuit Length	Conductor Size (AWG)	120	< 50'	#12	120	> 50'	#10	120	> 90'	#8	120	> 140'	#6	277	< 130'	#12	277	> 130'	#10	277	> 200'	#8	277	> 330'	#6	
Voltage	Circuit Length	Conductor Size (AWG)																										
120	< 50'	#12																										
120	> 50'	#10																										
120	> 90'	#8																										
120	> 140'	#6																										
277	< 130'	#12																										
277	> 130'	#10																										
277	> 200'	#8																										
277	> 330'	#6																										
<p>VOLTAGE DROP CHART NOTES:</p> <p>1) CIRCUIT SIZES INDICATED ON THE DRAWINGS ARE MINIMUM REQUIREMENTS. REFER TO THIS CHART FOR UPSIZING CONDUCTORS AS NEEDED.</p> <p>2) DO NOT CONNECT CONDUCTORS LARGER THAN #10 DIRECTLY TO A RECEPTACLE OR A SWITCH. PROVIDE A JUNCTION BOX TO DOWNSIZE THE CONDUCTOR TO #12 AT THE DEVICE.</p> <p>3) FOR CIRCUITS LONGER THAN THOSE LISTED ABOVE, CONSULT WITH THE ENGINEER FOR CONDUCTOR SIZES.</p>																												

LIGHTING FIXTURE SCHEDULE

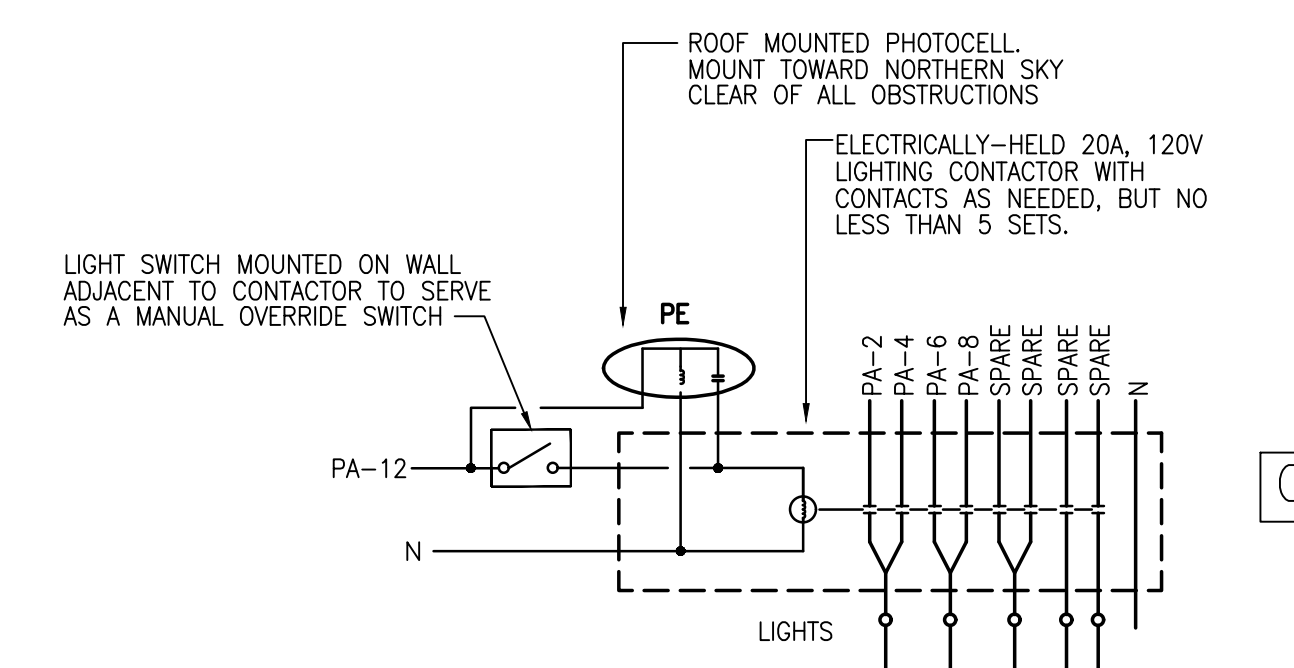
TYPE	MANUFACTURER	PART NUMBER	LAMPS	MOUNTING	REMARKS
A	SELUX	L60W-IC45-940-LW-F-04--*--1-DIM	LED, 44W 1018 LUMENS	SURFACE	*--COLOR BY ARCHITECT. --MOUNT ON SIDE OF BEAM.
SA	NLS LIGHTING	TRC-1-T3-16L-7-40K-UNV-SGL-SVR	LED, 36W 3636 LUMENS	POLE	-- NO SUBSTITUTIONS.
SB	NLS LIGHTING	TRC-1-T4-16L-7-40K-UNV-SGL-SVR	LED, 56W 5992 LUMENS	POLE	-- NO SUBSTITUTIONS.

CIRCUIT NO.	BREAKER AMPS	POLES	DESCRIPTION	PHASE LOAD (KVA)		DESCRIPTION	BREAKER		CIRCUIT NO.
				L1	L2		AMPS	POLES	
1	200	2	PANEL 'PA'	0.9	0.0	FULL WIDTH BREAKER	-	-	2
3	-	-	-	-	2.3	-	-	-	4
5	20	2	LIGHTS	0.4	0.0	CONTACTOR C1	20	1	6
7	-	-	-	-	0.4	SPACE	-	-	8
9	20	2	LIGHTS	0.2	0.0	SPACE	-	-	10
11	-	-	-	-	0.2	SPACE	-	-	12
TOTAL				1.5	2.9				

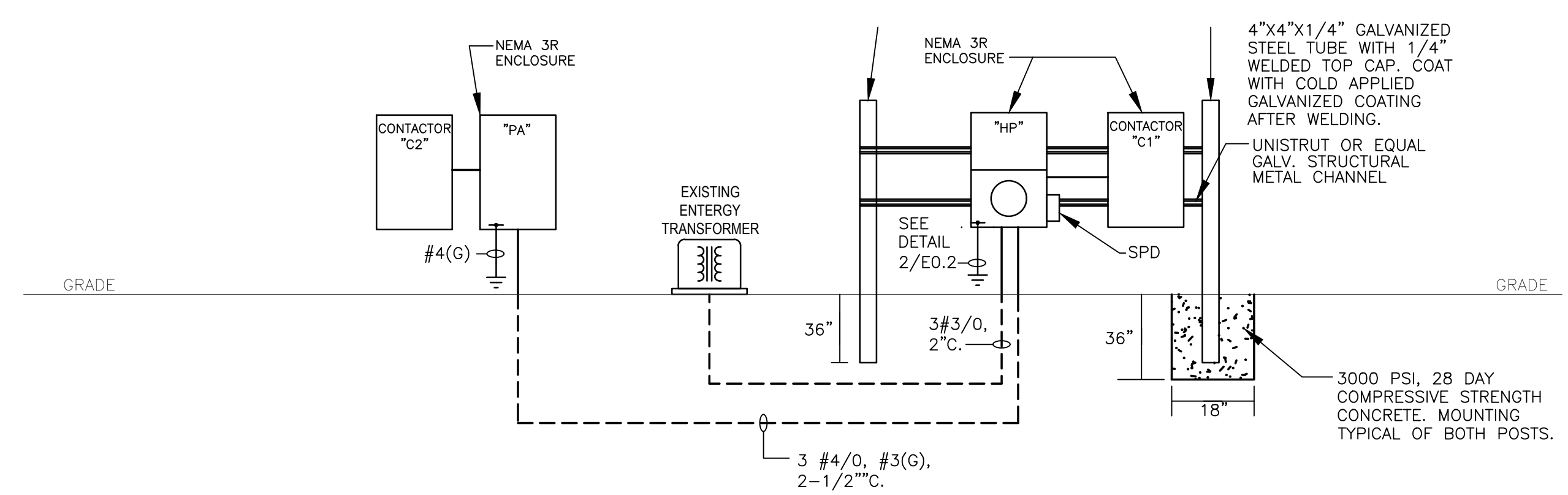
CIRCUIT NO.	BREAKER AMPS	POLES	DESCRIPTION	PHASE LOAD (KVA)		DESCRIPTION	BREAKER		CIRCUIT NO.
				L1	L2		AMPS	POLES	
1	20	1	REC. - ELECTRICAL	0.2	0.2	LIGHTS	20	2	2
3	20	1	REC. - OUTDOOR CLASSROOM	-	0.2	-	-	-	4
5	20	1	REC. - OUTDOOR CLASSROOM	0.2	0.2	LIGHTS	20	2	6
7	20	1	REC. - OUTDOOR CLASSROOM	-	0.2	-	-	-	8
9	20	1	LTS - PAVILION	0.0	0.0	PLAY GROUND TOWER	20	1	10
11	20	1	REC. - MOUNTED ON POLES	-	1.4	CONTACTOR C2	20	1	12
13	20	1	SPARE	0.0	0.1	LIGHTS	20	2	14
15	20	1	SPARE	-	0.0	-	-	-	16
17	20	1	SPARE	0.0	0.0	SPARE	20	1	18
19	20	1	SPARE	-	0.0	SPARE	20	1	20
21	20	1	SPARE	0.0	0.0	SPARE	20	1	22
23	20	1	SPARE	-	0.0	SPARE	20	1	24
25	20	1	SPARE	0.0	0.0	SPARE	20	1	26
27	20	1	SPARE	-	0.0	SPARE	20	1	28
29	20	1	SPARE	0.0	0.0	SPARE	20	1	30
31	20	1	SPARE	-	0.0	SPARE	20	1	32
33	20	1	SPARE	0.0	0.0	SPARE	20	1	34
35	20	1	SPARE	-	0.0	SPARE	20	1	36
37	20	1	SPARE	0.0	0.0	SPARE	20	1	38
39	20	1	SPARE	-	0.0	SPARE	20	1	40
41	20	1	SPARE	0.0	0.0	SPARE	20	1	42
TOTAL				0.9	2.3				



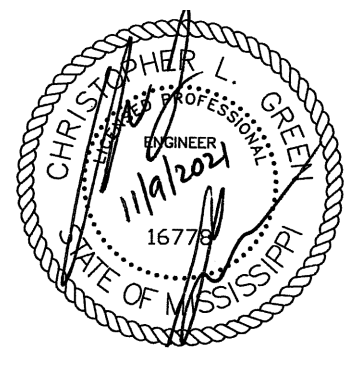
2 LIGHTING CONTACTOR C1 DETAIL
Scale: NONE



3 LIGHTING CONTACTOR C2 DETAIL
Scale: NONE



1 ONE-LINE DIAGRAM
Scale: NONE



09 NOVEMBER 2021

CONSTRUCTION DOCUMENTS

WBA # 0619

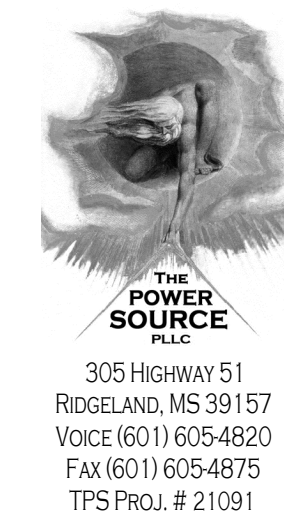
REVISIONS

NO.	DESCRIPTION	DATE
ADDENDUM		2021-12-02

E0.0
ELECTRICAL LEGEND

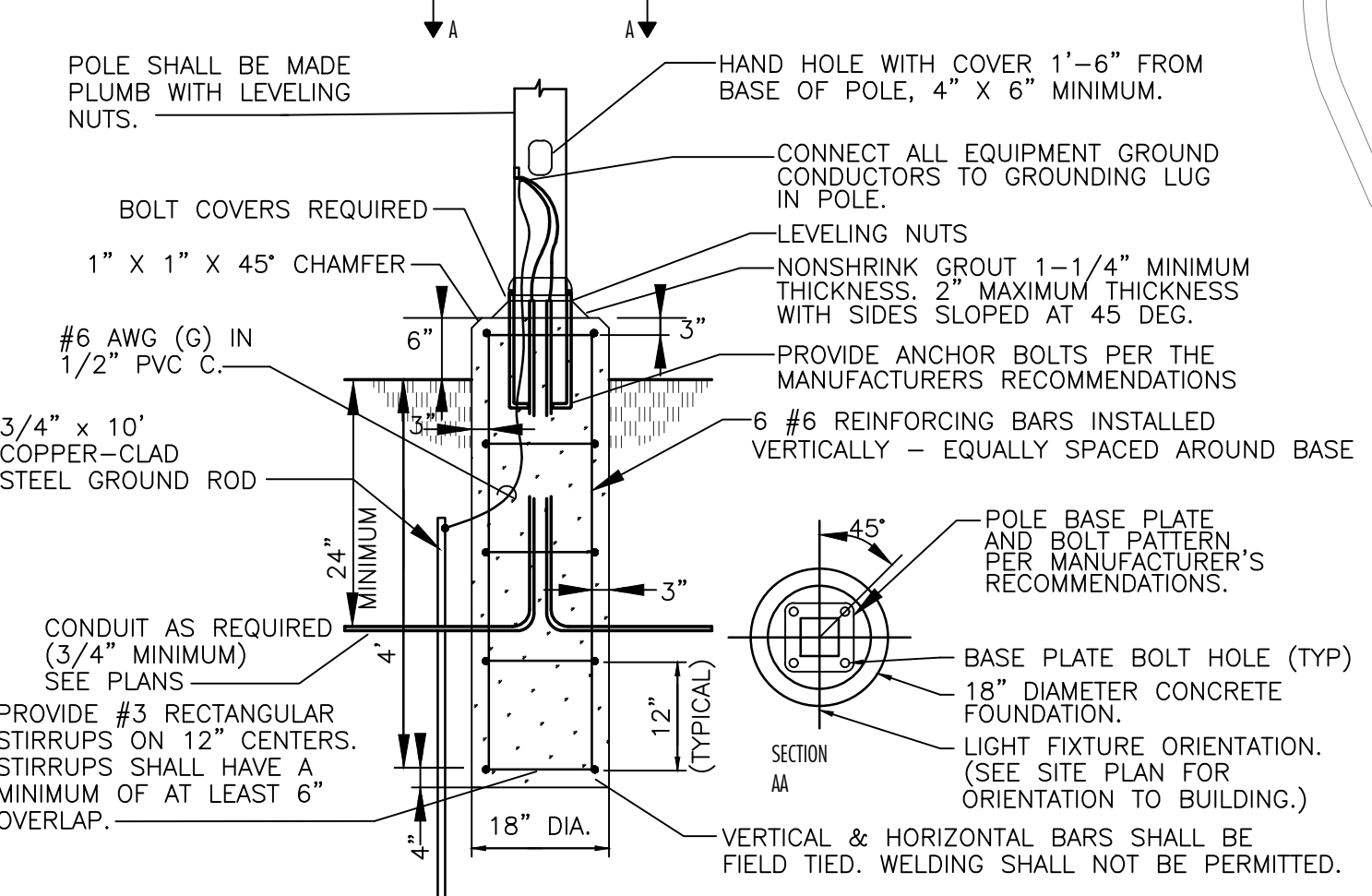
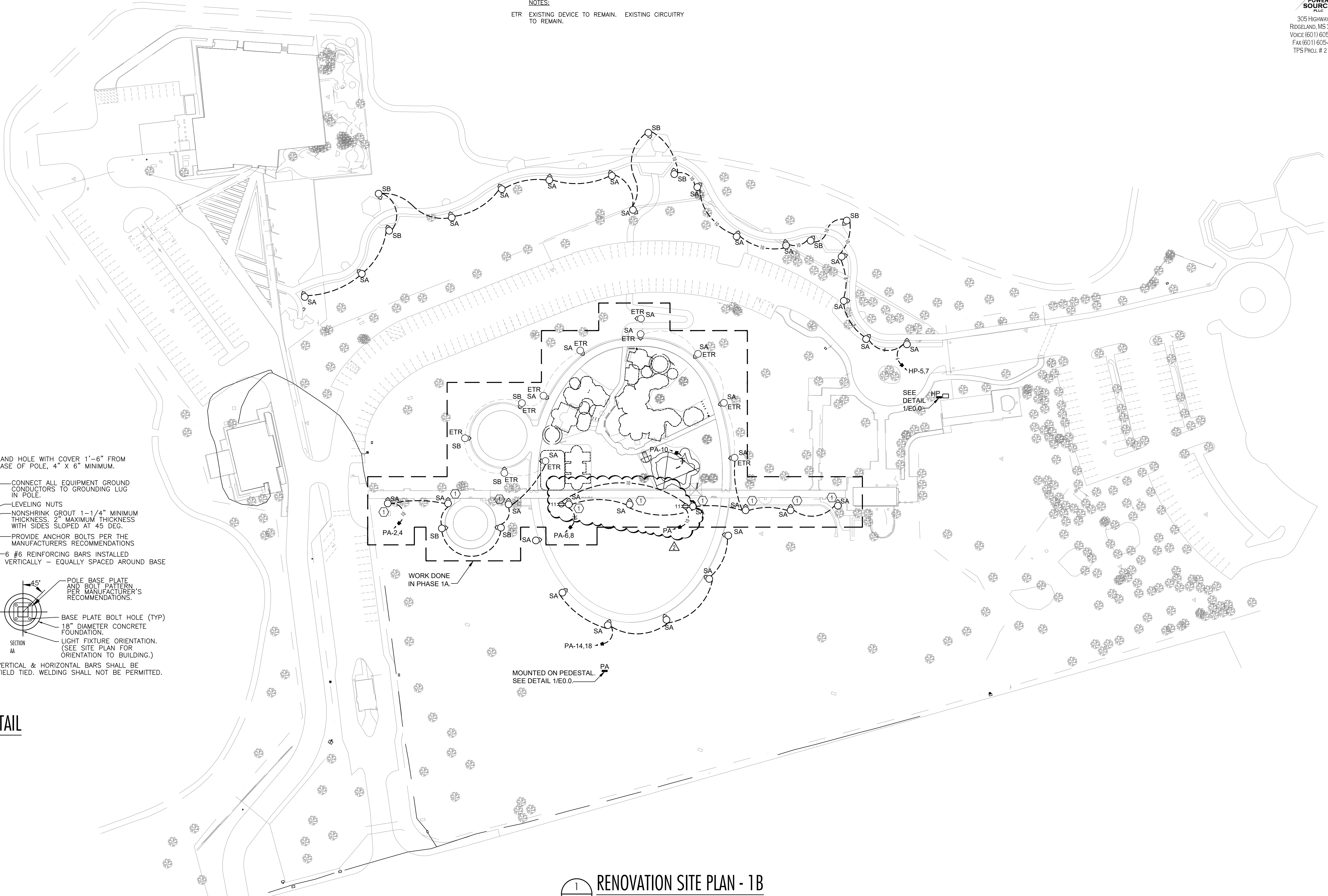
KEYED NOTES	
Mark	Description
①	FIXTURES PROVIDED BY OWNER

NOTES:
 ETR EXISTING DEVICE TO REMAIN. EXISTING CIRCUITRY TO REMAIN.



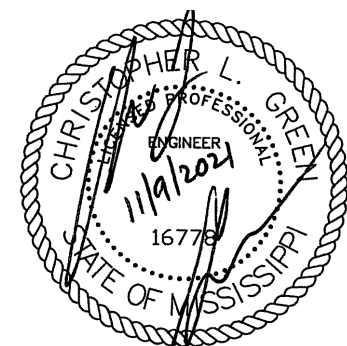
**LEFLEUR'S BLUFF
 TOURISM
 COMPLEX -
 PHASE 1B**

MDWFP
 Riverside Park Circle
 Jackson, MS 39202



② **POLE BASE DETAIL**
 E1.1 Scale: NONE

① **RENOVATION SITE PLAN - 1B**
 E1.1 Scale: 1" = 60'-0"



09 NOVEMBER 2021

CONSTRUCTION DOCUMENTS

WBA # 0619

REVISIONS		
NO.	DESCRIPTION	DATE

ADDENDUM 2021-12-02

