

Addendum #1

FOR

***City of Pearl Parks and Recreation:
Baseball and Softball Fields
Pearl, MS***

October 14, 2019

PICKERING FIRM, INC.
2001 Airport Parkway, Suite 201
Flowood, MS 39232
601-956-3663



DATE: October 14, 2019

PROJECT: **City of Pearl Parks and Recreation: Baseball and Softball Fields
Pearl, MS**

NOTICE TO ALL BIDDERS: This Addendum modifies (changes, adds to, deletes from) and/or interprets the Bidding Documents (Project Manual and/or Drawings, as indicated), and becomes part of the Contract Documents when the Agreement between the Owner and Contractor is executed.

1. Added Sheets FS-1 and FS-2 are being furnished with this addendum.
2. Replace original R100 with revised R100 furnished with this addendum; such revised sheet reflects the addition of FS-1, FS-2 and deletion of C0.0.
3. Bidding Documents are available at Jackson Blueprint and Supply, Inc. plan room and are no longer available at Pickering Firm, Inc. See details below:

Purchase Information

A printed bid set is **\$150.00** plus **\$25.00** shipping and applicable sales tax.

An electronic downloadable set is **\$25.00** plus applicable sales tax.

To place an order click on "PLACE ORDER" at the upper right hand corner of page.

Payment can be made by either:

1.Credit Card

2.Check made payable to Jackson Blueprint and mail check to: 699 Monroe St. Jackson, MS 39202. No orders will be printed until the check is received.

3.Cash - pick up orders only

4.Established Jackson Blueprint Account

Purchase of entire printed bid set includes all plans and specifications, including any addendas released at time of order. Plan holders will be notified by email when future addendums are issued and it will be the responsibility of each bid set holder to either download the addenda from the website, or contact Jackson Blueprint to place an order for a printed copy of the addenda.

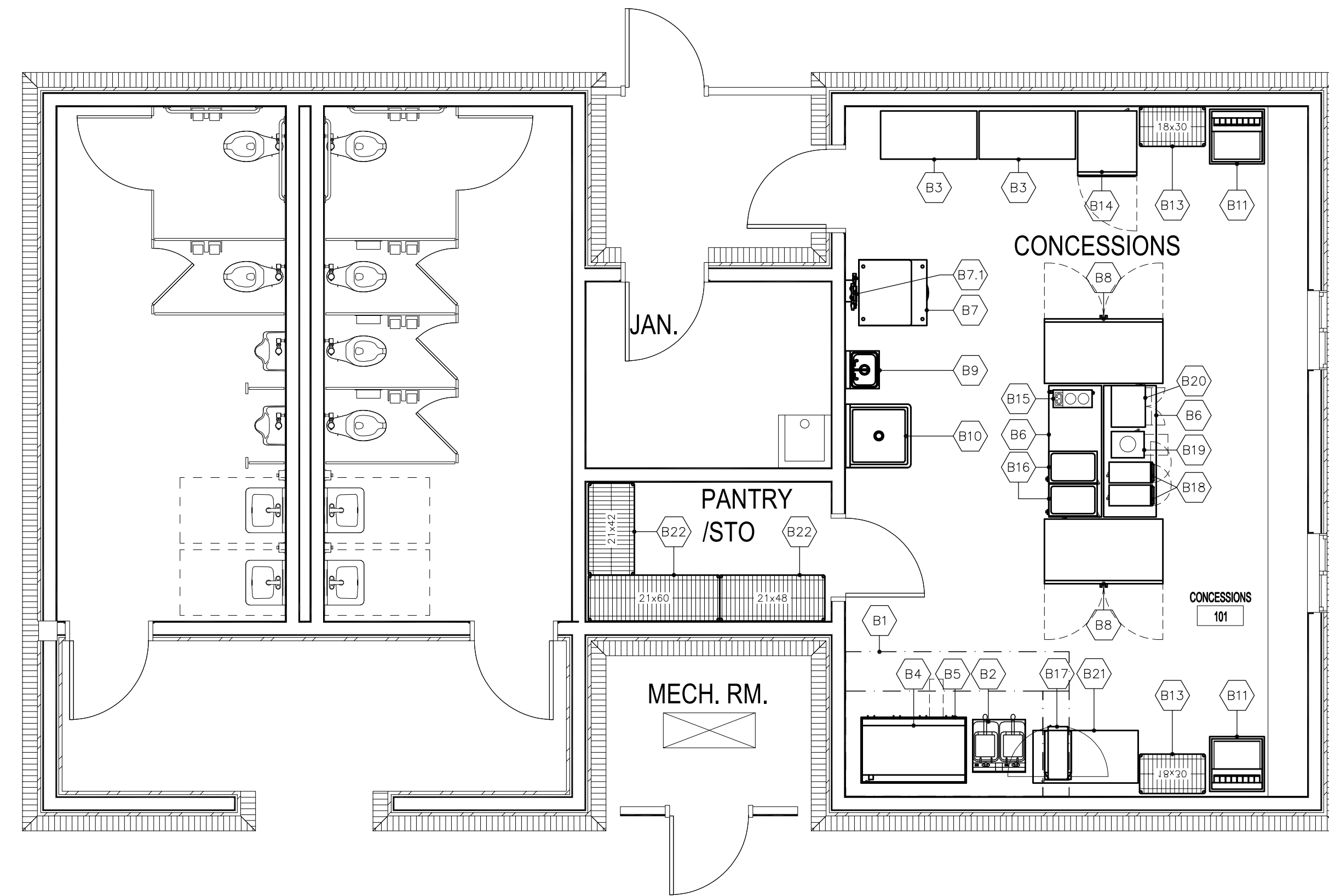
Shipping, if required, is added to any order based on method selected. Out-of-State orders will not be charged sales tax. In-state orders will be charged 8.0% sales tax.

Online orders are fulfilled within 1-2 business days. Credit card authorization and verification must be received prior to processing. **All sales are final.**

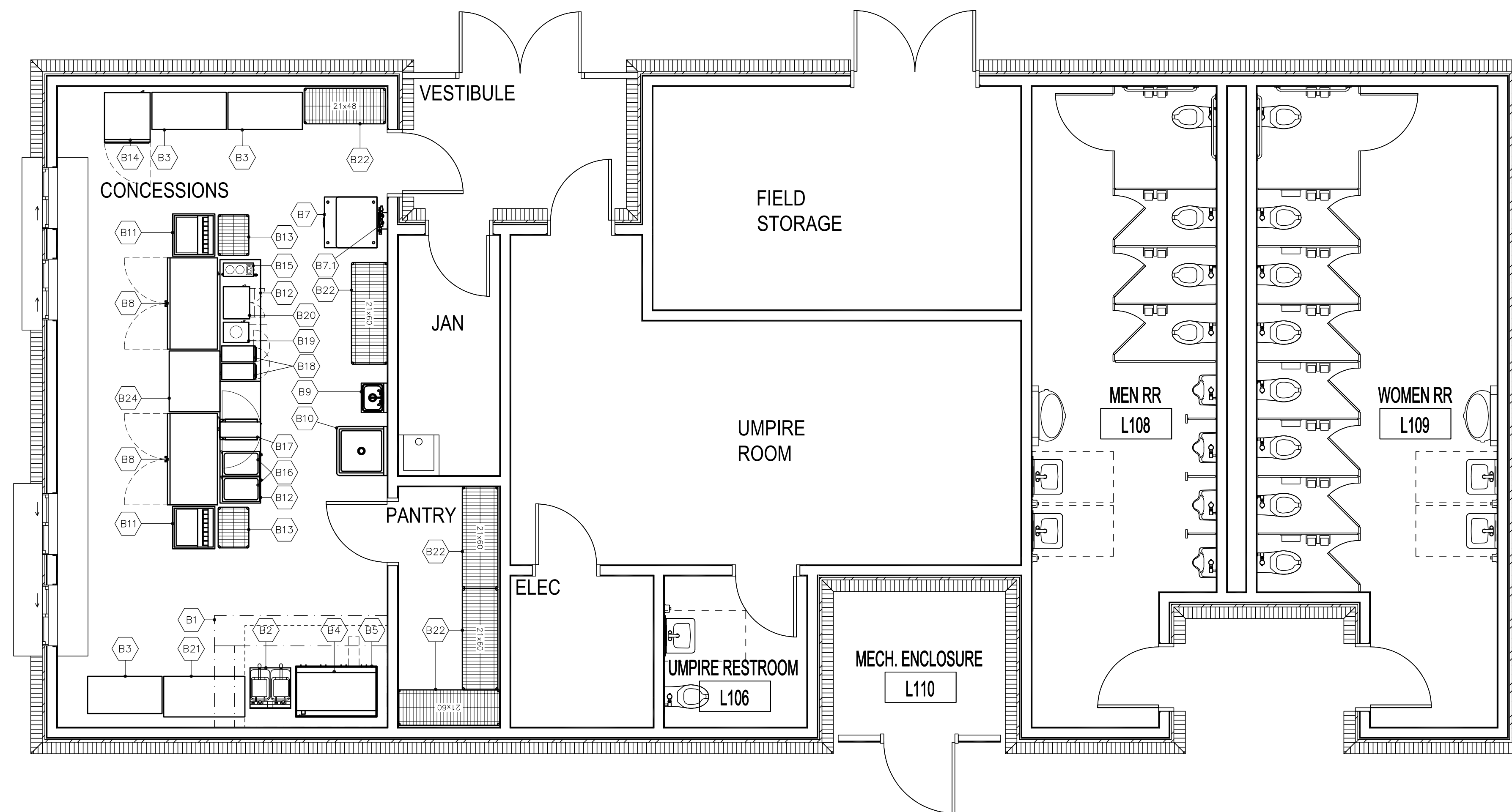
For questions regarding website registration and online orders please contact Jackson Blueprint & Supply at (601)353-5803

Addendum Distribution

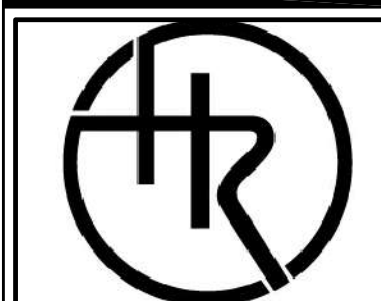
Existing plan holders will be notified by email upon the release of any addendum. Failure to order bid sets through Jackson Blueprint and not being on the plan holders list may prevent you from being notified of issued addenda. Printed copies of addendum will be available as part of your bid package upon request by contacting Jackson Blueprint.



1 FOOD SERVICE EQUIPMENT FLOOR PLAN
SCALE: 1/4"=1'-0"



2 FOOD SERVICE EQUIPMENT FLOOR PLAN
SCALE: 1/4"=1'-0"



Hotel & Restaurant Supply

Suppliers/Designers to the Food Service Industry

4251 Industrial Drive
Jackson, MS 39209
P: 601-352-2004
F: 601-718-7630
www.hrsupply.com

Copyright 2019
Hotel & Restaurant Supply.

DATE	
REMARKS	
BY	
MARK	

FOOD SERVICE EQUIPMENT DRAWINGS
PEARL PARK CONCESSION
PEARL, MS

PRELIMINARY DRAWINGS
NOT FOR CONSTRUCTION

DATE: 9.16.19
SCALE: 1/4" = 1'-0"
DRAWN: SDS
FILE: FS-1
SIZE: 24x36

SHEET NO.
FS-1
SHEET 1 OF 2

FOOD SERVICE PLUMBING AND ELECTRICAL SCHEDULE

ITEM NO	QTY	EQUIPMENT CATEGORY	COLD WATER SIZE (IN)	COLD WATER AFF (IN)	HOT WATER SIZE (IN)	HOT WATER AFF (IN)	DIRECT DRAIN SIZE (IN)	DIRECT DRAIN AFF (IN)	INDIR DRAIN SIZE (IN)	INDIR DRAIN TYPE	PLUMBING REMARKS	AMPS	HP	VOLTS	PHASE	CYCLE	DIRECT	NEMA	ELECTRICAL AFF (IN)	ELECTRICAL REMARKS	SUPPLIED BY	SET IN PLACE BY	FINAL CONNECTIONS	ITEM NO
B1	2	EXHAUST HOOD - BY MECHANICAL	-	-	-	-	-	-	-	-	-	-	-	-	-	-	-	-	-	SEE MECHANICAL	GC	GC	GC	B1
B2	2	FRYER - SOFTBALL LOCATIONS	-	-	-	-	-	-	-	-	-	58.3	-	240	1	60	X	-	24	VERIFY LOCATION	FSP	FSP	GC	B2
B2	2	FRYER - BASEBALL LOCATIONS	-	-	-	-	-	-	-	-	-	48	-	208	3	60	X	-	24	VERIFY LOCATION	FSP	FSP	GC	B2
B3	5	BOX FREEZER	-	-	-	-	-	-	-	-	-	1.09	-	115	1	60	-	5-15P	24	-	FSP	FSP	GC	B3
B4	2	48" COUNTERTOP GRIDDLE - SOFTBALL LOCATIONS	-	-	-	-	-	-	-	-	-	66.7	-	240	1	60	X	-	24	VERIFY LOCATION	FSP	FSP	GC	B4
B4	2	48" COUNTERTOP GRIDDLE - BASEBALL LOCATIONS	-	-	-	-	-	-	-	-	-	38.2	-	208	3	60	X	-	24	VERIFY LOCATION	FSP	FSP	GC	B4
B5	2	EQUIPMENT STAND	-	-	-	-	-	-	-	-	-	-	-	-	-	-	-	-	-	-	FSP	FSP	FSP	B5
B6	2	WORK TABLE - 60" X 24"	-	-	-	-	-	-	-	-	-	-	-	-	-	-	-	-	-	-	FSP	FSP	FSP	B6
B7	2	ICE MAKER W/ BIN	0.5	-	-	-	-	-	0.75	RFD	-	13.3	-	115	1	60	-	5-15P	36	-	FSP	FSP	GC	B7
B7.1	2	WATER FILTER	0.5	66	-	-	-	-	-	-	-	-	-	-	-	-	-	-	-	-	FSP	GC	GC	B7.1
B8	4	REFRIGERATED REACH-IN MERCHANDISER - BY VENDOR	-	-	-	-	-	-	-	-	BY VENDOR	7.6	0.5	115	1	60	-	5-15P	5	BY VENDOR	GC	GC	GC	B8
B9	2	HANDSINK - BY OTHERS	0.5	24	0.5	24	1.5	20	-	-	BY PLUMBING CONTRACTOR	-	-	-	-	-	-	-	-	-	GC	GC	GC	B9
B10	2	FREE STANDING SINK - BY OTHERS	0.5	18	0.5	18	-	-	1.5	FS	BY PLUMBING CONTRACTOR	-	-	-	-	-	-	-	-	-	GC	GC	GC	B10
B11	4	SODA DISPENSER W/ICE BIN - BY VENDOR	0.5	-	-	-	-	-	0.75	RFD	BY VENDOR	12.0	-	115	1	60	-	5-15P	48	BY VENDOR	GC	GC	GC	B11
B12	2	WORK TABLE - 72" X 24"	-	-	-	-	-	-	-	-	-	-	-	-	-	-	-	-	-	-	FSP	FSP	FSP	B12
B13	4	BAG-IN-BOX - BY VENDOR	-	-	-	-	-	-	-	-	BY VENDOR	-	-	-	-	-	-	-	-	BY VENDOR	GC	GC	GC	B13
B14	2	REACH-IN REFRIGERATOR	-	-	-	-	-	-	-	-	-	4.0	0.2	115	1	60	-	5-15P	5	-	FSC	GC	GC	B14
B15	2	COFFEE BREWER - BY VENDOR	0.5	-	-	-	-	-	-	-	BY VENDOR	15.0	-	120	1	60	-	5-20P	-	BY VENDOR	GC	GC	GC	B15
B16	4	COUNTERTOP FOOD WARMER - BY VENDOR	-	-	-	-	-	-	-	-	BY VENDOR	10.0	-	120	1	60	-	5-15P	24	BY VENDOR	GC	GC	GC	B16
B17	2	HEAT LAMP - FRY WARMER - BY VENDOR	-	-	-	-	-	-	-	-	BY VENDOR	4.4	-	120	1	60	-	5-15P	24	BY VENDOR	GC	GC	GC	B17
B18	4	NACHO CHEESE AND CHILLI WARMING DISPENSER - BY VENDOR	-	-	-	-	-	-	-	-	BY VENDOR	7.0	-	120	1	60	-	5-15P	48	BY VENDOR	GC	GC	GC	B18
B19	2	CHIP WARMER	-	-	-	-	-	-	-	-	-	1.0	-	120	1	60	-	5-15P	48	-	FSP	FSP	GC	B19
B20	2	POPCORN MACHINE	-	-	-	-	-	-	-	-	-	10.0	-	120	1	60	-	5-15P	48	-	FSP	FSP	GC	B20
B21	2	SS WORK TABLE - 48" X 24"	-	-	-	-	-	-	-	-	-	-	-	-	-	-	-	-	-	-	FSP	FSP	FSP	B21
B22	1LOT	STORAGE SHELVING	-	-	-	-	-	-	-	-	-	-	-	-	-	-	-	-	-	-	FSP	FSP	FSP	B22
B23	1	WORK TABLE - 36 x 30"	-	-	-	-	-	-	-	-	-	-	-	-	-	-	-	-	-	-	FSP	FSP	FSP	B23
B24	1	CANDY CART - BY VENDOR	-	-	-	-	-	-	-	-	BY VENDOR	-	-	-	-	-	-	-	-	BY VENDOR	GC	GC	GC	B24



Hotel & Restaurant Supply

Suppliers/Designers to the Food Service Industry

4251 Industrial Drive
Jackson, MS 39209
P:801-352-2004
F:801-718-7630
www.hrsupply.com

Copyright 2019 Hotel & Restaurant Supply.

DATE

REMARKS

BY

MARK

FOOD SERVICE EQUIPMENT DRAWINGS

**CONCESSION STANDS
PEARL PARK
PEARL, MS**

PRELIMINARY DRAWINGS

NOT FOR CONSTRUCTION

DATE: 9.16.19
SCALE: 1/4" = 1'-0"
DRAWN: SDS/JF
FILE: FS-1
SIZE: 24x36

SHEET NO.
FS-2
SHEET 2 OF 2

ARCHITECTURAL ABBREVIATIONS

Table of architectural abbreviations including terms like ANGLE, AIR CONDITIONING, ASBESTOS, ACQUISITION, etc., with their corresponding symbols and acronyms.

MATERIALS LEGEND

Table showing material symbols and their names: BRICK, CONCRETE, CONCRETE MASONRY UNITS, GRAVEL, GROUT, GYPSUM BOARD, INSULATION (RIGID), METAL, SHEATHING, WOOD (SOLID WOOD), WOOD (CONTINUOUS BLOCKING), WOOD (DISCONTINUOUS BLOCKING), WATERPROOFING / DAM PROOFING.

SYMBOLS LEGEND

Table of symbols including DOOR TAG, ELEVATION MARK, ELEVATION TAG, ROOM MARK, SECTION MARK, STOREFRONT MARK, PARTITION TYPE, WINDOW TYPE.

GENERAL NOTES

- 1. NOTES APPEAR ON VARIOUS DRAWINGS FOR VARIOUS DISCIPLINES FOR DIFFERENT SYSTEMS AND MATERIALS. REVIEW ALL SHEETS AND APPLY NOTES TO RELATED BUILDING COMPONENTS.
2. REFER TO COMPLETE SET OF ISSUED CONTRACT DOCUMENTS FOR OTHER APPLICABLE NOTES, ABBREVIATIONS, AND SYMBOLS.
3. WHERE MATERIALS ARE APPLIED TO, OR ARE IN DIRECT CONTACT WITH WORK INSTALLED BY ANOTHER SUBCONTRACTOR, COMMENCEMENT OF WORK IMPLIES ACCEPTANCE OF THE SUBSTRATE AS SUITABLE FOR THE APPLICATION INTENDED.
4. ISOLATE DISSIMILAR METALS TO PREVENT GALVANIC CORROSION.
5. PARTITION TYPES AND FIRE RESISTIVE RATINGS INDICATED ON A WALL ARE TO BE CONTINUOUS FOR THE LENGTH AND HEIGHT OF A PARTITION.
6. OPENINGS IN RATED WALL, FLOOR, CEILING AND ROOF ASSEMBLIES SHALL BE SEALED WITH PENETRATION SEALANT SYSTEMS MEETING OR EXCEEDING THE REQUIRED FIRE RESISTIVE RATINGS.
7. MAINTAIN THE FIRE RATING OF CONSTRUCTION AROUND CABINETS, PANELS, AND BOXES RECESSED IN FIRE RATED WALL, FLOOR, AND CEILING ASSEMBLIES.
8. PROVIDE CONTINUOUS PERIMETER FIRE SAFING BETWEEN FLOORS AND COORDINATE THE INSTALLATION WITH THE EXTERIOR WALL. FIRE RATING OF SAFING SHALL MATCH FIRE RATING OF FLOOR CONSTRUCTION.
9. DO NOT SCALE THE DRAWINGS.
10. FIELD MEASURE AND CONFIRM DIMENSIONS FOR OWNER PROVIDED EQUIPMENT AND FURNISHINGS.
11. PROVIDE STIFFENERS, BRACING, BACKING PLATES AND BLOCKING REQUIRED FOR SECURE INSTALLATION OF TOILET PARTITIONS, DOORS AND DOOR HARDWARE INCLUDING WALL-MOUNTED DOOR STOPS, HANDRAILS, WALL-MOUNTED SHELVES, OPERABLE PARTITIONS, MISCELLANEOUS EQUIPMENT, AND SUSPENDED MECHANICAL AND ELECTRICAL EQUIPMENT.
12. COORDINATE ALL BASE AND HOUSEKEEPING PADS WITH MECHANICAL, PLUMBING AND ELECTRICAL EQUIPMENT.
13. LOCATE ACCESS PANELS AS INDICATED ON DRAWINGS. FOR ACCESS PANELS NOT SHOWN BUT REQUIRED BY PROVISIONS OF THE CONTRACT DOCUMENTS, LOCATED IN ACCORDANCE WITH APPLICABLE CODES. SUBMIT PROPOSED LOCATIONS TO THE ARCHITECT FOR REVIEW AND ACCEPTANCE PRIOR TO INSTALLATION.

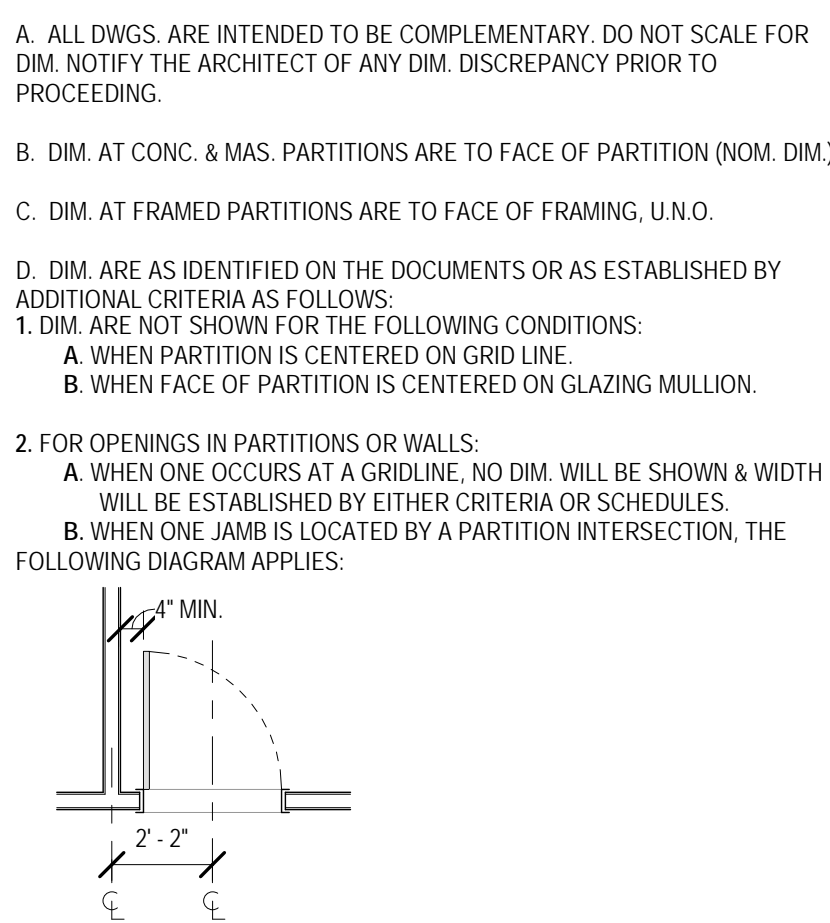
PROJECT TEAM

Table listing project team members: OWNER (CITY OF PEARL), ARCHITECT (WIER BOERNER ALLIN ARCHITECTURE, PLLC), CIVIL ENGINEER (PICKERING FIRM, INC.), MECHANICAL + PLUMBING ENGINEERS (GSK MECHANICAL, INC.), STRUCTURAL ENGINEER (MCQUEEN STRUCTURAL ENGINEERING, PLLC), ELECTRICAL ENGINEER (THE POWER SOURCE, PLLC).

PROJECT DESCRIPTION

THIS PROJECT FEATURES SIGNIFICANT CIVIL IMPROVEMENTS RELATING TO EIGHT BASEBALL FIELDS AND THREE SOFTBALL FIELDS. THE ARCHITECTURAL SCOPE INVOLVES TWO NEW CONCESSIONS AND RESTROOM BUILDINGS, FIELD BACKSTOP WALLS AND NETTING, AND NEW DUGOUTS AND SEATING SHADE STRUCTURES.
EACH CONCESSION STAND (A SMALL BUILDING AT THE SOFTBALL FIELDS AND LARGE BUILDING AT THE BASEBALL FIELDS) IS WOOD FRAMED WITH EXTERIOR METAL PANEL, BRICK WAHNSCOTING, AND METAL ROOF PANEL. EACH BUILDING INCLUDES KITCHEN EQUIPMENT AND A VENT HOOD.
THE BACKSTOP WALLS ARE CMU BACKUP WALL WITH BRICK VENEER. THE DUGOUTS AND SHADE STRUCTURES ARE BOTH OFF-SHELF, PREMANUFACTURED CANOPY PRODUCTS.
A. ALL DIMS. ARE INTENDED TO BE COMPLEMENTARY. DO NOT SCALE FOR DIM. NOTIFY THE ARCHITECT OF ANY DIM. DISCREPANCY PRIOR TO PROCEEDING.
B. DIM. AT CONC. & MAS. PARTITIONS ARE TO FACE OF PARTITION (NOM. DIM.).
C. DIM. AT FRAMED PARTITIONS ARE TO FACE OF FRAMING, U.N.O.
D. DIM. ARE AS IDENTIFIED ON THE DOCUMENTS OR AS ESTABLISHED BY ADDITIONAL CRITERIA AS FOLLOWS:
1. DIM. ARE NOT SHOWN FOR THE FOLLOWING CONDITIONS:
A. WHEN PARTITION IS CENTERED ON GRID LINE.
B. WHEN FACE OF PARTITION IS CENTERED ON GLAZING MULLION.
2. FOR OPENINGS IN PARTITIONS OR WALLS:
A. WHEN ONE OCCURS AT A GRIDLINE, NO DIM. WILL BE SHOWN & WIDTH WILL BE ESTABLISHED BY EITHER CRITERIA OR SCHEDULES.
B. WHEN ONE JAMB IS LOGICATED BY A PARTITION INTERSECTION, THE FOLLOWING DIAGRAM APPLIES.

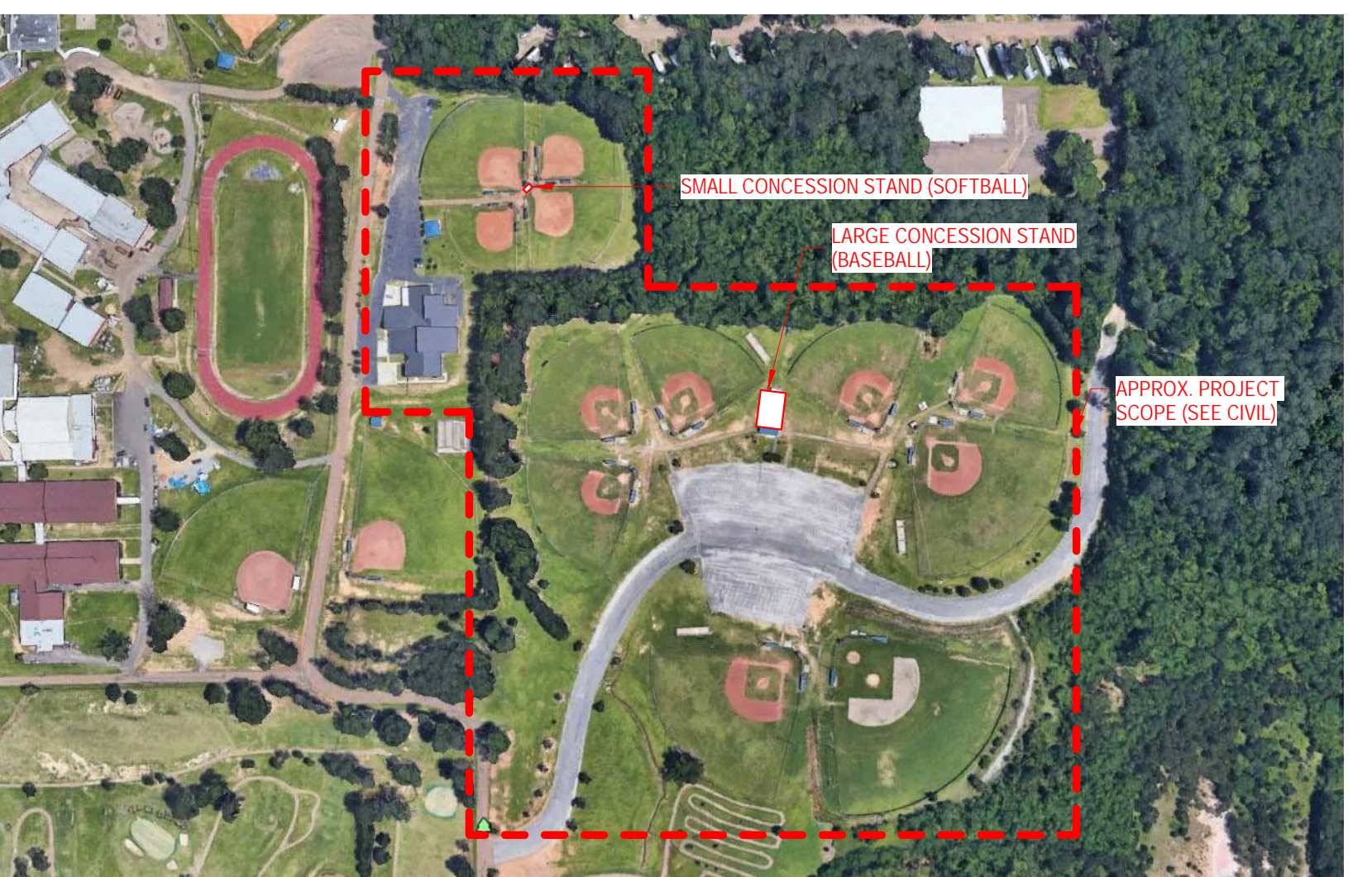
DIMENSIONING CRITERIA



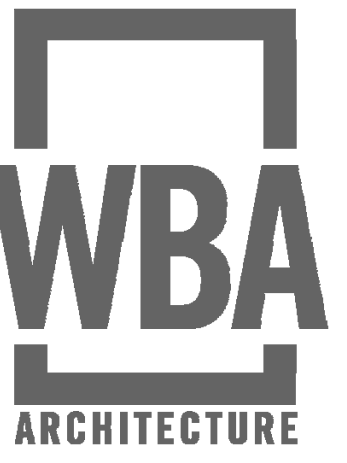
DRAWING INDEX

Table of drawing index: INDEX OF DRAWINGS, SHEET NUMBER, SHEET NAME. Lists sheets 01 through 323, including categories like 01-REFERENCE, 02-CIVIL, 05-ARCHITECTURE, 06-STRUCTURAL, 07-MECHANICAL, 08-PLUMBING, 09-ELECTRICAL, 10-FOOD SERVICE.

VICINITY MAP



EXISTING SITE IMAGE



PARKS AND RECREATION BASEBALL AND SOFTBALL FIELDS
CITY OF PEARL
320 CITY CENTER DRIVE
PEARL, MS 39208



10.02.2019

CONSTRUCTION DOCUMENTS
WBA # 3518

Table with columns: REVISIONS, NO., DESCRIPTION, DATE

